



*Clearwater
Christian
College*

College Catalog 1987-89

CLEARWATER CHRISTIAN COLLEGE
At a Glance

LOCATION

3400 Gulf to Bay Boulevard
Clearwater, Florida 33519
Telephone: (813) 726-1153

PRESIDENT

George D. Youstra, Ph.D.

PRESIDENT EMERITUS

Arthur E. Steele, D.D.

DEGREES GRANTED

A.S., B.S., B.A.

AFFILIATION

Independent

ACCREDITATION: Commission on Colleges of the Southern Association of
Colleges and Schools

APPROVAL:

Florida Department of Education for courses leading to
teacher certification
Florida Office of Student Financial Aid for Florida Student
Assistance Grants and the Florida Tuition Voucher
Immigration and Naturalization Service for Foreign
Students
State Approving Agency for Veterans Benefits
State Board of Independent Colleges and Universities
United States Department of Education for Pell Grants
and Guaranteed Student Loans

MEMBERSHIP:

Florida Association of Colleges and Universities
Florida Christian College Conference
National Association of Industrial and Educational Buyers
National Christian College Athletic Association
Orange Belt League
Tampa Bay Library Consortium

Clearwater Christian College is a four year fundamental Christian liberal arts co-educational institution which is denominationally unaffiliated and dedicated to sound academic instruction while propagating the historic Christian faith.



*"For God hath not given us the
spirit of fear, but of power, and
of love, and of a sound mind."*

II Timothy 1:7

(College Verse)

College Catalog 1987-89

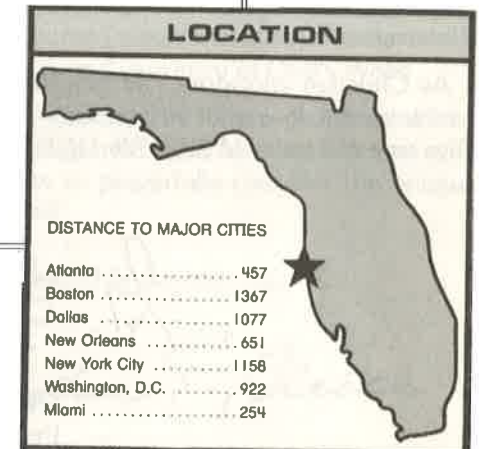
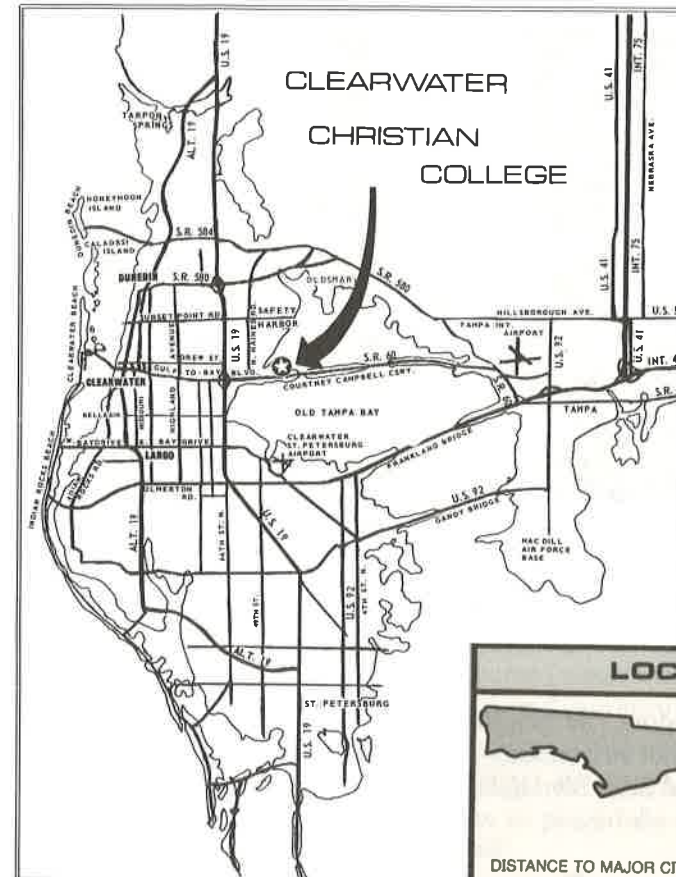
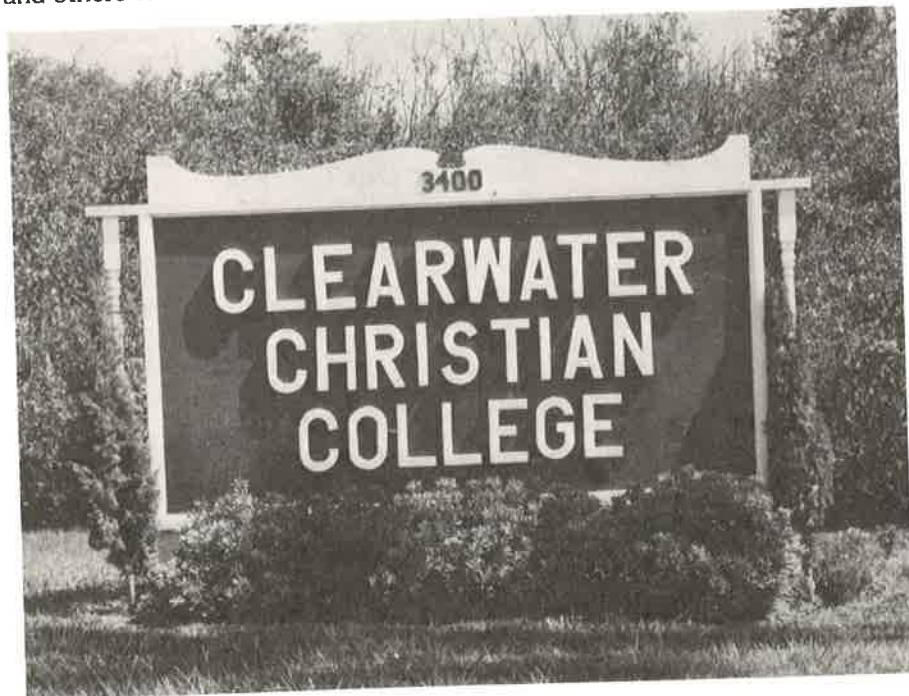
Although this catalog represents an accurate statement of regulations, course requirements and fees, the College reserves the right to alter these as circumstances may require.

LOCATION

Clearwater, Florida, is located halfway down the Florida peninsula on the west coast. It is adjacent to St. Petersburg and just across Tampa Bay from the city of Tampa. The entrance to the College is on Route 60, the main highway between Tampa and Clearwater. This is also known as the Courtney Campbell Causeway. The College is within sight of the Tampa International Airport. The 50 acre campus is situated on Tampa Bay which is the eastern boundary of the city of Clearwater. The western boundary of the city is the Gulf of Mexico.

The College is ideally situated for a Christian liberal arts college. The location in a cluster of towns provides many areas of Christian service in fundamental, separated, and soul-winning churches. There are also many opportunities for employment for students in small industries and shopping centers. This part of Florida is fast becoming the tourist center of the state. The greater metropolitan west coast area also provides opportunities for graduate studies for faculty and graduates.

The city of Clearwater is referred to by the Chamber of Commerce as "Sparkling Clearwater." This is not only because of the fine beaches and water attractions, but also because the city is clean and friendly. The College maintains an apartment and some guest facilities for visitors who would like to learn more about the College while they are in the area to enjoy the Florida sun and many other attractions. We invite pastors, parents, prospective students, and others to visit the campus as our guests.





A WORD FROM CLEARWATER'S PRESIDENT

We believe that the development of character and intellect go hand in hand. Teaching character begins in the home, but after a student leaves for further training, colleges must help. An institution of higher education must have character if it is to transmit character to its students. Professors must be willing to articulate Christian ideals and convictions while the board and administration ensure that orderliness and discipline prevail.

Wordsworth penned these words of advice: "What we have loved, others will love, and we will teach them how." If you are a parent or prospective student and love the Word of God, the souls of men, great literature, inspiring music, clean fun, hard work, and this great land of ours, then take the time to look into Clearwater Christian College.

As Christian educators, our ministry, our only ministry, is to help young people learn to love what their parents and generations before them have loved. Give us a call today at (813) 726-1153! God bless you!

Sincerely yours,

George D. Youstra
President



A MESSAGE FROM THE PRESIDENT EMERITUS

At Clearwater Christian College our desire is that graduates be effective witnesses for the Lord, not only in churches, in Christian schools, on missions fields, but in every walk of life. So-called secular fields of work are not secular for the Christian; instead, they are fields for witness and service. We believe that every graduate should be concerned about lost souls and have a love for those who are saved. We believe that the basic solution to the problems in our nation and in our world is "the Lamb of God that taketh away the sin of the world." (John 1:29)

Part of the total program of the College is the academic, spiritual and character development of our students. They are equipped to discern unbelief and sin which creep into our churches, institutions, and homes. As true soldiers of the cross, Clearwater students are expected to effectively oppose the world and those who have rejected the authority and inerrancy of God's Word.

We commend Clearwater Christian College, its board, administration, faculty, staff, and student body to pastors, parents and friends for prayer and support. We invite prospective students to prayerfully consider the unique program and emphasis of the College.

Yours in His Faithfulness,

Arthur E. Steele
President, Emeritus

CALENDAR OF EVENTS **1987-88**

FALL SEMESTER

August 27 - December 17

1987

August	
21	Faculty Workshop
23	Dorms Open, New Students Arrive
24-25	Orientation, Advising, Testing; Returning Students Arrive
26	Registration in morning
27	Classes Begin
28	Board Meeting
	22nd Convocation 7:30 p.m.
31-Sept. 4	Christian Life Conference
9	Last day to register, drop or add classes
October	
14	Day of Prayer
19-23	Mid-term Week
November	
12-14	Weekend at College
26-29	Thanksgiving Break
30-Dec. 4	Advising for Spring Term
11	Christmas Banquet
14-17	Final Exams (dorms close Dec. 17)
18	Board Meeting
21	All grades due in office by noon
18-Jan. 3	Christmas Holidays (offices open except Dec. 24, 27; Jan. 1-3)

"WINTERIM", 1988

January 4 - 8

1988

January	
3	Dorms Open
4-8	ICR Winter Institute on Creation Science

SPRING SEMESTER

January 13 - May 7

1988

January	
10	New Students Arrive
11	Orientation, Testing, Advising of New Students
12	Registration in morning
13	Classes Begin
26	Last day to register, drop or add classes
February	
1-5	Missionary Conference
5	Board Meeting
17	Work Day
10-21	Weekend at College
29-March 4	Mid-term Week
14	Founder's Banquet

26-April 3

Easter Break

4-15

Advising for Summer/Fall terms

29

Awards Banquet

May

2-5

Final Exams

6

Baccalaureate 7:30 p.m.

7

Commencement 9:30 a.m.

Board Meeting

11

All grades due in office by noon

12

Faculty Workshop

SUMMER SESSIONS

May 13 - June 3; June 13 - July 1

1988

May

13

Registration, Classes Begin—Session I

30

Memorial Day Observed (no classes)

June

3

Last day of classes, Final Exams

6

All grades due in office by noon

13

Registration, Classes Begin—Session II

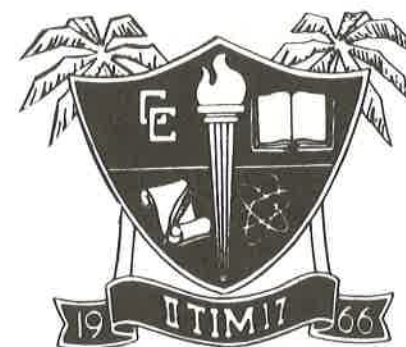
July

1

Last day of classes, Final Exams

5

All grades due in office by noon



CALENDAR OF EVENTS **1988-1989**

FALL SEMESTER **August 25 - December 15** **1988**

August	
19	Faculty Workshop
21	Dorms Open, New Students Arrive
22-23	Orientation, Advising, Testing; Returning Students Arrive
24	Registration in morning
25	Classes Begin
September	
2	Board Meeting
	23rd Convocation
5-9	Christian Life Conference
8	Last Day to register, drop or add classes
October	
19	Day of Prayer
17-21	Mid-term Week
November	
10-12	Weekend at College
24-27	Thanksgiving Break
28-Dec. 9	Advising for Spring Term
9	Christmas Banquet
12-15	Final Exams (dorms close Dec. 15)
16	Board Meeting
20	All grades in office by noon
16-Jan. 2	Christmas Holidays

SPRING SEMESTER **January 5 - May 6** **1989**

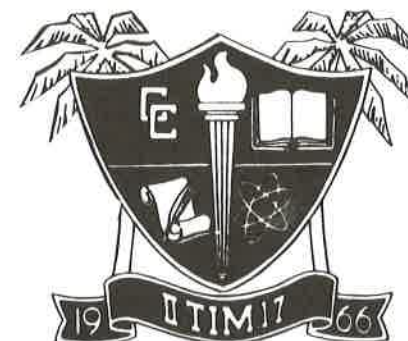
January	
2	New Students Arrive
3	Orientation, Testing, Advising of New Students
4	Registration in morning
5	Classes Begin
19	Last day to register, drop or add classes
February	
6-10	Missionary Conference
10	Board Meeting
14	Work Day
16-18	Weekend at College
27-March 3	Mid-term Week
13	Founder's Banquet
18-27	Easter Break
28-April 7	Advising for Summer/Fall terms
28	Awards Banquet
May	
1-5	Final Exams
5	Baccalaureate 7:30 p.m.
6	Commencement 9:30 a.m.
	Board Meeting

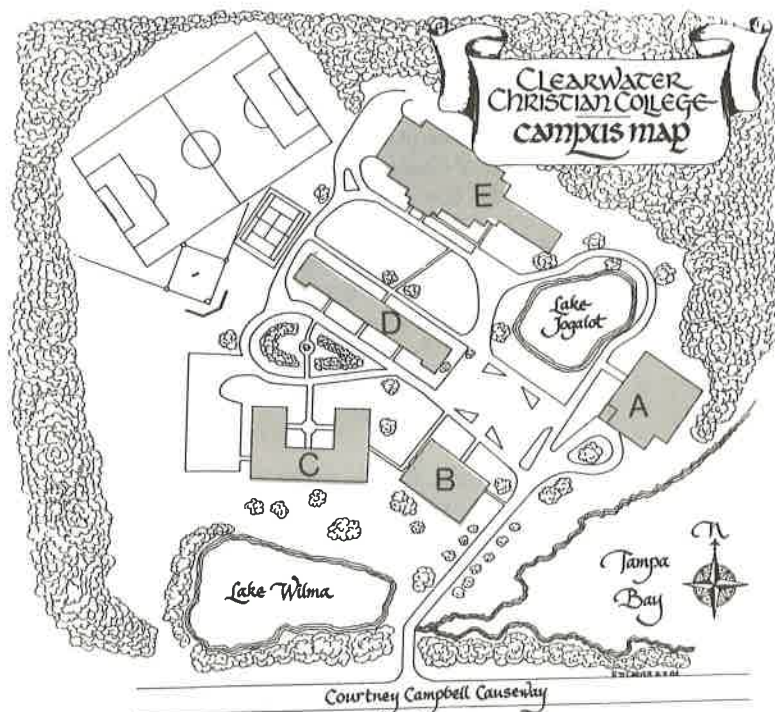
SUMMER SESSIONS

May 12 - June 2; June 16 - July 7

1989

May	
12	Registration, Classes begin—Session I
29	Memorial Day Observed (no classes)
June	
2	Last day of classes, Final Exams, Dorms Close
5	All grades due in office by noon
16	Registration, Classes begin—Session II
July	
4	Independence Day (no classes)
7	Last day of classes, Final Exams
10	All grades due in office by noon





- A - CATHCART HALL — First Floor—Student lounge and College dining area
Second Floor—Administrative offices and classrooms (201-204)
- B - COLLEGE LIBRARY— Reading Room, educational media room and classroom
- C - DAMBACH HALL — Campus chapel, faculty offices and reception area, administrative offices, campus bookstore, music offices, and classrooms (DH 101-106)
- D - EMMON'S HALL — Women's Residence Hall, Christian Service office, resident supervisor's apartment, Infirmary, Music Suite
- E - GYMNASIUM/
MEN'S DORM — College gymnasium-auditorium, Athletic Department offices and classroom, Men's Residence Hall

TABLE OF CONTENTS

INTRODUCTION.....	1
PURPOSE AND OBJECTIVES.....	13
STUDENT LIFE.....	19
ADMISSIONS AND MATRICULATION.....	27
FINANCIAL INFORMATION.....	39
ACADEMIC INFORMATION.....	55
PROGRAMS OF INSTRUCTION (Majors).....	63
English.....	65
Humanities.....	67
Psychology.....	68
Sacred Music.....	70
Bible.....	73
Biblical Literature.....	74
English Bible.....	75
Business Administration.....	77
Minor in Computer Information Systems.....	78
Secretarial Science.....	79
Preschool Education.....	81
Elementary Education.....	82
Minor in Special Education.....	83
Secondary Education.....	83-90
(Bible, Business, English, History, Mathematics, Physical Education, Social Studies)	
Music Education.....	91
COURSE DESCRIPTIONS.....	93
EVENING BIBLE INSTITUTE.....	123
PERSONNEL.....	127



1987

January S M T W T F S 1 2 3 4 5 6 7 8 9 10 11 12 13 14 15 16 17 18 19 20 21 22 23 24 25 26 27 28 29 30 31	February S M T W T F S 1 2 3 4 5 6 7 8 9 10 11 12 13 14 15 16 17 18 19 20 21 22 23 24 25 26 27 28	March S M T W T F S 1 2 3 4 5 6 7 8 9 10 11 12 13 14 15 16 17 18 19 20 21 22 23 24 25 26 27 28 29 30 31	April S M T W T F S 1 2 3 4 5 6 7 8 9 10 11 12 13 14 15 16 17 18 19 20 21 22 23 24 25 26 27 28 29 30
May S M T W T F S 1 2 3 4 5 6 7 8 9 10 11 12 13 14 15 16 17 18 19 20 21 22 23 24 25 26 27 28 29 30 31	June S M T W T F S 1 2 3 4 5 6 7 8 9 10 11 12 13 14 15 16 17 18 19 20 21 22 23 24 25 26 27 28 29 30	July S M T W T F S 1 2 3 4 5 6 7 8 9 10 11 12 13 14 15 16 17 18 19 20 21 22 23 24 25 26 27 28 29 30 31	August S M T W T F S 1 2 3 4 5 6 7 8 9 10 11 12 13 14 15 16 17 18 19 20 21 22 23 24 25 26 27 28 29 30 31
September S M T W T F S 1 2 3 4 5 6 7 8 9 10 11 12 13 14 15 16 17 18 19 20 21 22 23 24 25 26 27 28 29 30	October S M T W T F S 1 2 3 4 5 6 7 8 9 10 11 12 13 14 15 16 17 18 19 20 21 22 23 24 25 26 27 28 29 30 31	November S M T W T F S 1 2 3 4 5 6 7 8 9 10 11 12 13 14 15 16 17 18 19 20 21 22 23 24 25 26 27 28 29 30	December S M T W T F S 1 2 3 4 5 6 7 8 9 10 11 12 13 14 15 16 17 18 19 20 21 22 23 24 25 26 27 28 29 30 31

1988

January S M T W T F S 1 2 3 4 5 6 7 8 9 10 11 12 13 14 15 16 17 18 19 20 21 22 23 24 25 26 27 28 29 30 31	February S M T W T F S 1 2 3 4 5 6 7 8 9 10 11 12 13 14 15 16 17 18 19 20 21 22 23 24 25 26 27 28 29	March S M T W T F S 1 2 3 4 5 6 7 8 9 10 11 12 13 14 15 16 17 18 19 20 21 22 23 24 25 26 27 28 29 30 31	April S M T W T F S 1 2 3 4 5 6 7 8 9 10 11 12 13 14 15 16 17 18 19 20 21 22 23 24 25 26 27 28 29 30
May S M T W T F S 1 2 3 4 5 6 7 8 9 10 11 12 13 14 15 16 17 18 19 20 21 22 23 24 25 26 27 28 29 30 31	June S M T W T F S 1 2 3 4 5 6 7 8 9 10 11 12 13 14 15 16 17 18 19 20 21 22 23 24 25 26 27 28 29 30	July S M T W T F S 1 2 3 4 5 6 7 8 9 10 11 12 13 14 15 16 17 18 19 20 21 22 23 24 25 26 27 28 29 30 31	August S M T W T F S 1 2 3 4 5 6 7 8 9 10 11 12 13 14 15 16 17 18 19 20 21 22 23 24 25 26 27 28 29 30 31
September S M T W T F S 1 2 3 4 5 6 7 8 9 10 11 12 13 14 15 16 17 18 19 20 21 22 23 24 25 26 27 28 29 30	October S M T W T F S 1 2 3 4 5 6 7 8 9 10 11 12 13 14 15 16 17 18 19 20 21 22 23 24 25 26 27 28 29 30 31	November S M T W T F S 1 2 3 4 5 6 7 8 9 10 11 12 13 14 15 16 17 18 19 20 21 22 23 24 25 26 27 28 29 30	December S M T W T F S 1 2 3 4 5 6 7 8 9 10 11 12 13 14 15 16 17 18 19 20 21 22 23 24 25 26 27 28 29 30 31

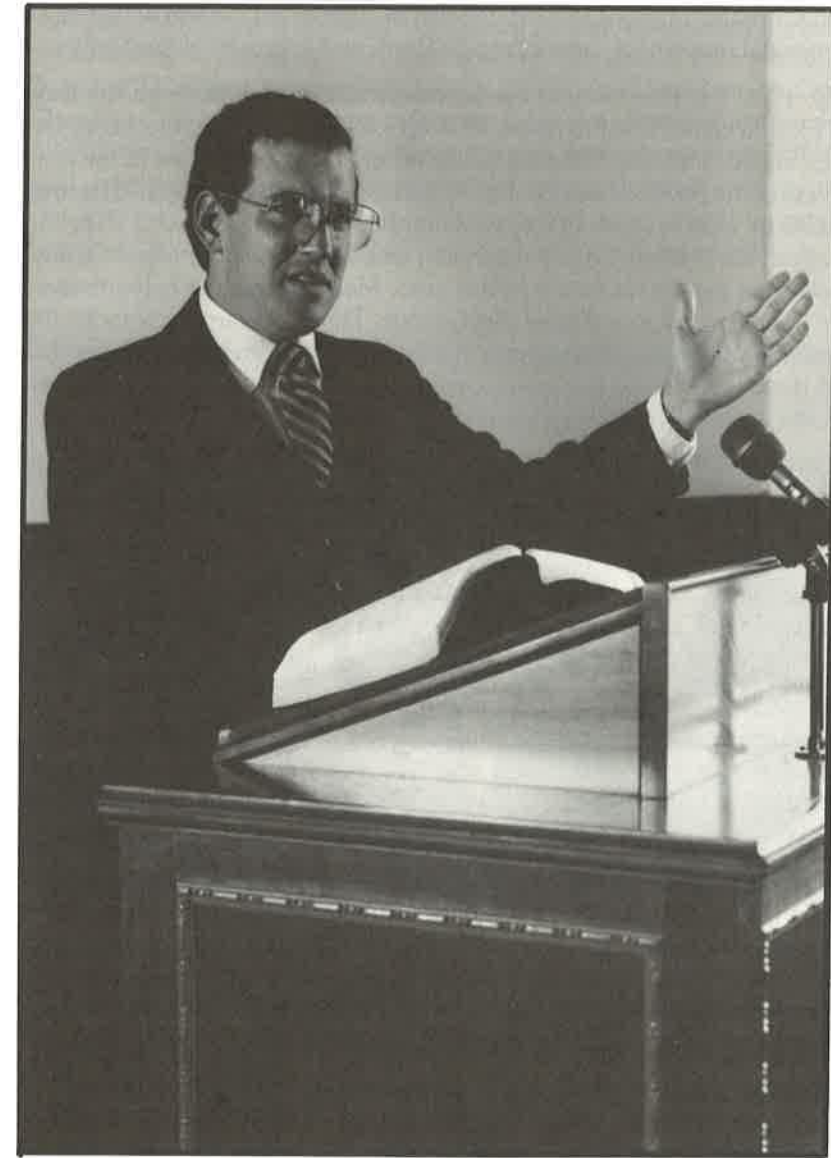
1989

January 1989 S M T W T F S 1 2 3 4 5 6 7 8 9 10 11 12 13 14 15 16 17 18 19 20 21 22 23 24 25 26 27 28 29 30 31	February 1989 S M T W T F S 1 2 3 4 5 6 7 8 9 10 11 12 13 14 15 16 17 18 19 20 21 22 23 24 25 26 27 28	March 1989 S M T W T F S 1 2 3 4 5 6 7 8 9 10 11 12 13 14 15 16 17 18 19 20 21 22 23 24 25 26 27 28 29 30 31	April 1989 S M T W T F S 1 2 3 4 5 6 7 8 9 10 11 12 13 14 15 16 17 18 19 20 21 22 23 24 25 26 27 28 29 30
May 1989 S M T W T F S 1 2 3 4 5 6 7 8 9 10 11 12 13 14 15 16 17 18 19 20 21 22 23 24 25 26 27 28 29 30 31	June 1989 S M T W T F S 1 2 3 4 5 6 7 8 9 10 11 12 13 14 15 16 17 18 19 20 21 22 23 24 25 26 27 28 29 30	July 1989 S M T W T F S 1 2 3 4 5 6 7 8 9 10 11 12 13 14 15 16 17 18 19 20 21 22 23 24 25 26 27 28 29 30 31	August 1989 S M T W T F S 1 2 3 4 5 6 7 8 9 10 11 12 13 14 15 16 17 18 19 20 21 22 23 24 25 26 27 28 29 30 31
September 1989 S M T W T F S 1 2 3 4 5 6 7 8 9 10 11 12 13 14 15 16 17 18 19 20 21 22 23 24 25 26 27 28 29 30	October 1989 S M T W T F S 1 2 3 4 5 6 7 8 9 10 11 12 13 14 15 16 17 18 19 20 21 22 23 24 25 26 27 28 29 30 31	November 1989 S M T W T F S 1 2 3 4 5 6 7 8 9 10 11 12 13 14 15 16 17 18 19 20 21 22 23 24 25 26 27 28 29 30	December 1989 S M T W T F S 1 2 3 4 5 6 7 8 9 10 11 12 13 14 15 16 17 18 19 20 21 22 23 24 25 26 27 28 29 30 31



“...that men may know that thou,
whose name alone is Jehovah, art the
most high over all the earth.”

Psalm 83:18



Purpose and Objectives

HISTORY OF THE COLLEGE

Clearwater Christian College began with a burden in the hearts of the founders concerning the trends in evangelical colleges away from Biblical standards of morality and from the historic Biblical fundamentals. The founders also perceived a growing casual attitude toward doctrine, and a lack of emphasis on personal soul-winning. They were burdened about the general apathy in Christian colleges toward unbelief as expressed in such activities as the ecumenical movement, new evangelicalism, and ecumenical evangelism.

In July, 1965, the possibility of establishing a Christian college on the west coast of Florida came closer to reality after an exploratory trip to Florida by Dr. Arthur E. Steele. This was followed by a year of calling on pastors in the area and surveying the possibilities of and the need for a Christian college. The area appeared to be ideal because of the great number of fundamental churches and opportunities for student Christian service, employment, and graduate study. Dr. Steele then moved his family to this area. Many friends made themselves available to help in the founding of this College. Through church contacts, the Lord supplied the architect, the general contractor, the building superintendent, and the owner of the land. The College acquired 50 beautiful waterfront acres at the eastern entrance to the city of Clearwater.

The Lord's hand was evident in every phase of the beginning of the College which was incorporated on January 18, 1966. In April, 1966, the I.R.S. approved the College as a tax exempt institution. Construction began on the first two buildings in the summer of 1966, with completion at the end of the year. The Clearwater Bible Church graciously invited the College to begin classes in its buildings until the College buildings were completed.

On September 17, 1966, fifteen students enrolled as the first class of Clearwater Christian College. The Lord providentially supplied funds, friends, faculty, facilities, and a promising student body. The great enthusiasm and sense of expectancy during that first year has continued through the years of our history.

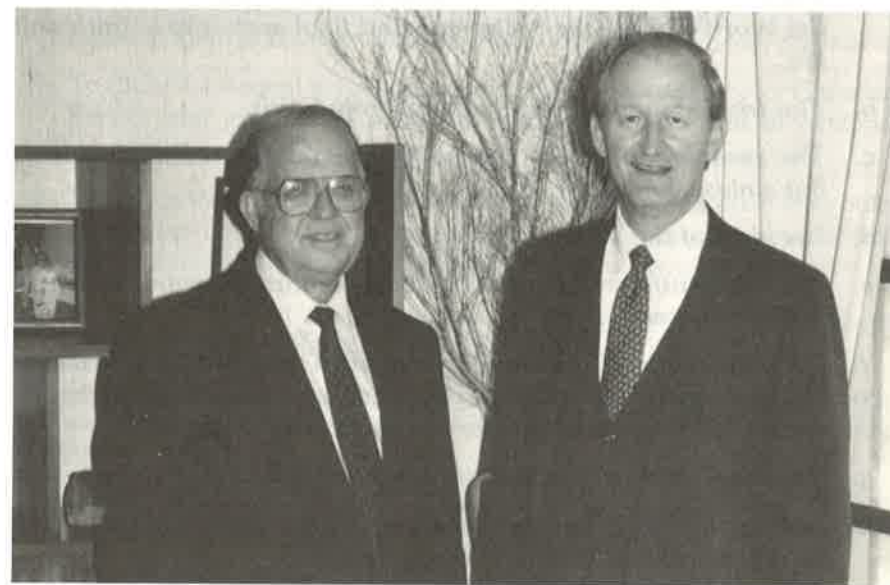
All of the buildings on campus have been *Built to the Glory of God*. The library building was completed in April, 1970. The men's dormitory building was completed in October, 1974. The auditorium/gymnasium was completed in 1978. In September, 1983, the new multi-purpose Cathcart Hall was dedicated. This structure houses the College's cafeteria, as well as numerous offices and classrooms on the second floor. Funds for this building were provided through the generous gift of Mr. and Mrs. Harold P. Paden of Alexandria, Virginia.

The College was approved in September, 1980, by the U.S. Department of Education to receive Pell Grants and Guaranteed Student Loans for qualified students. After years of preparation, the College received regional accreditation by the Commission on Colleges of the Southern Association of Colleges & Schools in December, 1984. This recognition by a secular non-governmental agency signifies academic excellence and scholarship on a par

with secular colleges and universities. That the College has become regionally accredited should not be construed as a retreat from its historic position on doctrinal issues or its high standards of personal conduct.

Beginning in 1985 Clearwater Christian College students began to participate in the Florida Student Assistance Grant, one of the state of Florida's financial aid programs. In 1986 the Florida Tuition Voucher became available to CCC students.

In 1986 the College celebrated twenty years of operation under the leadership of Dr. Steele. In January, 1987, after an extensive search for a successor, the Board of Directors named Dr. George Youstra as President of Clearwater Christian College. Dr. Youstra brings an extensive record of accomplishment in Christian Education and government to his leadership roll at CCC. He has held responsible positions at several Christian Colleges and in the U.S. Department of Education under Secretaries Bell and Bennett in the Office of Regional Liaison and as a Special Assistant for Private Education.



President, Emeritus Dr. Arthur Steele (left)
President George D. Youstra

Through the years the College "family" has seen the Lord provide miraculously for the continuance of this ministry. We believe this provision is due in no small part to the position the College has taken against doctrinal extremes, apostasy, and error, and its full commitment to the fundamentals of the historic Christian faith. Clearwater Christian College began in the will of the Lord through much prayer, and will continue to operate seeking His guidance, protection, and provision.

PURPOSE

The purpose of Clearwater Christian College is to assist in the intellectual, spiritual, and character development of its students by providing a quality Biblically integrated liberal arts education, thus equipping them to make judgments and establish priorities which will be glorifying to God.

DOCTRINAL BASIS

As stated in the Constitution

We believe and maintain the following:

- a. The plenary divine inspiration of the Scriptures in the original languages; their consequent inerrancy and infallibility; and as the Word of God, their supreme and final authority in faith and life.*
- b. The triune God: Father, Son, and Holy Spirit.*
- c. The essential, absolute, eternal Deity; and the real and proper, but sinless, humanity of our Lord Jesus Christ.*
- d. His birth of the Virgin Mary.*
- e. His substitutionary, expiatory death, in that He gave His life "a ransom for many."*
- f. His resurrection from among the dead in the same body in which He was crucified, and the imminent and premillennial bodily return of Jesus Christ in glory to this earth.*
- g. The total depravity of man through the Fall.*
- h. Salvation, the effect of regeneration by the Spirit and the Word, not by works but by grace through faith.*
- i. The everlasting bliss of the saved and the everlasting suffering of the lost.*
- j. The real spiritual unity in Christ of all redeemed by His precious blood.*
- k. The necessity of maintaining, according to the Word of God, the purity of the Church in doctrine and life.*

OBJECTIVES

1. To aid the student in understanding the liberal arts from a Biblical perspective.
2. To develop the character of the student to strive for excellence in all areas so that he may be pleasing to the Lord in every respect.
3. To develop the student's ability for critical thinking, thus enabling him to arrive at conclusions which are consistent with the truth revealed in God's Word.
4. To cultivate in the student a desire to know God and His Word, and to provide for the fulfillment of that desire.
5. To develop the student's ability to function effectively through proper writing, speaking and quantitative skills.
6. To provide each student with the opportunity for cultural enrichment, assisting them to develop standards for evaluating music and other arts.
7. To cause the student to recognize and fulfill his responsibility for Christian Service and to witness to others concerning their need of personal salvation through Jesus Christ.
8. To inform the student of Satan's strategy as it is expressed in false cults and modern religious movements and to see the necessity for Biblical separation from ecclesiastical apostasy and those involved therein.
9. To help the student attain a proficiency in his chosen ministry, field, or profession and seek God's direction in his life.
10. To help the student understand the foundations which have made our nation great and to encourage him to conduct himself as a responsible citizen.
11. To help the student understand the Biblical account of special creation and be able to answer non-Biblical theories of origins.
12. To encourage capable students to pursue graduate studies.

DISTINCTIVES

DEFENSE OF THE FAITH

Inasmuch as doctrinal soundness has declined alarmingly in 20th century churches and schools throughout the world, Clearwater Christian College, its board, and faculty, stand committed to a program of instruction designed to inform its scholars of:

1. the importance of maintaining personal allegiance to the "whole council of God" as given in the Bible;
2. the need of informing others of the danger in theologies and philosophies which deviate from scriptural soundness;
3. the very great importance of learning how and why this great decline in the true faith has taken place.

To accomplish these ends the College requires all students to take a course in modern religious issues in which the conditions of the contemporary church world are studied and interpreted.

EVANGELISM

The Lord's commission to evangelize and teach all nations is reflected in all phases of the four-year college program at Clearwater. Students are reminded constantly that they are ambassadors of the King, commissioned primarily to propagate the saving Gospel of Jesus Christ. The majors they choose in the liberal arts become the open doors to fields of contact for Christ. Our prayers are that students will be brought closer to the Lord while at Clearwater Christian College and graduate with a love for souls.

PATRIOTISM

Clearwater Christian College stands in the historic tradition of the early colleges of our land and believes that the greatness of our nation is directly attributable to the honored place the Word of God had in the lives and thinking of our forebears. Students learn authentic American history at Clearwater. The Constitution of the United States and its Bill of Rights are studied and understood as the framers of these freedom documents gave them to us. Students understand that the right to private ownership of property and competitive free-enterprise are Scriptural. They consequently understand the peril to our American way of life; and presented is a clear explanation, in the light of Scripture, of humanism, and other forces and trends which erode the rights and blessings God intends for man.

SCHOLARSHIP

Because all truth is God's truth, there is no area of legitimate scholarship which should be ignored or shunned by the Christian. Clearwater Christian College attempts to instill in its scholars a love of the truth and the intellectual stamina and curiosity to pursue it wherever it leads. Academic freedom for the Christian college professor and student means to allow the Holy Spirit as our guide to lead us into all truth. Students are exposed to philosophies and views which are contrary to Scripture, but the error is pointed out and examined in the light of God's Word. Only by examining all evidence through the lens of Scripture can we hope to arrive at conclusions which are true.



"Let the words of my mouth, and the meditation of my heart, be acceptable in thy sight, O Lord, my strength, and my redeemer."

Psalm 19:14



Student Life

STUDENT LIFE

Standard of Conduct

Clearwater Christian College bases its standard of conduct on Biblical principles. Students are subject to the discipline of the College for the duration of their enrollment. Before Registration, students are required to familiarize themselves with the rules and regulations set forth in the **Student Handbook** and College Catalog, and agree to abide by the standards of Clearwater Christian College.

A student whose personal conduct is a poor testimony for Christ and who fails to live in accordance with the scriptural ideals of the College will be spiritually counseled and will be disciplined to such extent as the Dean of Students or the Discipline Committee deems advisable. The College reserves the right to refuse admission, to put on disciplinary probation, or to dismiss any student whose personal conduct and/or attitude in the judgment of the administration are not consistent with the Christian spirit and standards which the College seeks to maintain.

Attendance at Clearwater Christian College is made possible by gifts from Bible-believing Churches and individuals. Students should be mindful of those who have provided most of the cost of their education and realize that attendance is a privilege and not a right.

It is the God-given duty of every Christian to bear witness daily for Christ to the world. The Bible admonishes "that ye present your bodies a living sacrifice, holy, acceptable unto God. . . ." It is every believer's "reasonable service" to examine carefully his public and private conduct that in all points, by God's grace, he may be found faithful in his Christian testimony.



Local Church Attendance

The College requires every student to faithfully attend and support one of the fundamental, Bible-believing churches in our area. Students are required to verify their attendance at weekly services of such a church. No services are held on campus on Sundays in order that students may take an active part in the ministry of a local Bible-believing church. Transportation to and from several sound churches will be provided for dorm residents each Sunday morning and evening if necessary.

Midweek Prayer Service

Midweek Prayer Service is conducted by resident students on Wednesday evenings throughout the school year. This is an opportunity for students headed for the ministry to gain experience expounding the Word of God. This service is required for all resident students unless excused for Christian Service assignments.

Chapel

The daily chapels are an important part of the College program. Students participate in the musical portions of these services, with the President of the College and members of the faculty presenting Bible messages that bear on the issues and concerns of the day. The College is also fortunate in being able to invite to Chapel pastors from the area as well as visiting evangelists, missionaries, and Bible conference speakers. Students are also provided opportunities in Chapel to give testimonies of God's grace and work in their lives on a regular basis.

Christian Service

Clearwater Christian College arranges and sponsors various Christian Service assignments in the surrounding communities. Each full-time student is required to participate weekly in some activity during each semester at the College.

Christian Service is considered a non-credit course for which Satisfactory or Unsatisfactory grades will appear on the transcripts. Students receiving an Unsatisfactory grade will meet with the Dean of Students and the Director of Christian Service to receive counsel and to plan improvement.

It is the prayer of the Board and Faculty that many students will feel led to the pastorate or the mission field while at the College. Regular Christian Service participation provides the growing Christian an opportunity to "stir up the gift" that is in him. The Christian student must realize that the primary mission, wherever the Lord leads, is to witness to a saving knowledge of Jesus Christ. We are His ambassadors.

Extracurricular Activities

Students are encouraged to participate in extracurricular activities for their own development—mental, social, and physical. The Athletic Director encourages participation in both intramural and intercollegiate athletics. Other opportunities for students include participation in drama and choir productions, yearbook staff, student government and the Student Missionary Fellowship.

Intercollegiate Athletics

Clearwater Christian College is a member of the Florida Christian College Conference, the Orange Belt Christian College Conference, and the National Christian College Athletic Association. The College affords students a full complement of intercollegiate athletics including women's volleyball, basketball, and softball and men's soccer, basketball, and baseball. Cougar sports teams have traditionally fared well in competition within our leagues.



Health Services

A physical examination is required of all new students prior to enrollment. Exceptions are made for special or non-degree seeking students. The College provides a medical form to be used by the student and his physician.

Clearwater Christian College cannot accept the responsibility for illnesses or accidents on or off campus or in sporting activities. Students use college facilities and participate in college-related activities at their own risk. Jean Macfarlane, R.N., Ph.D., acts as nurse on call and arranges for doctors' appointments when necessary. A low cost student health insurance plan is available to all full-time students.

Campus Residence

Accommodations for students are provided on campus in separate, well equipped women's and men's residence halls. Apartments for dorm

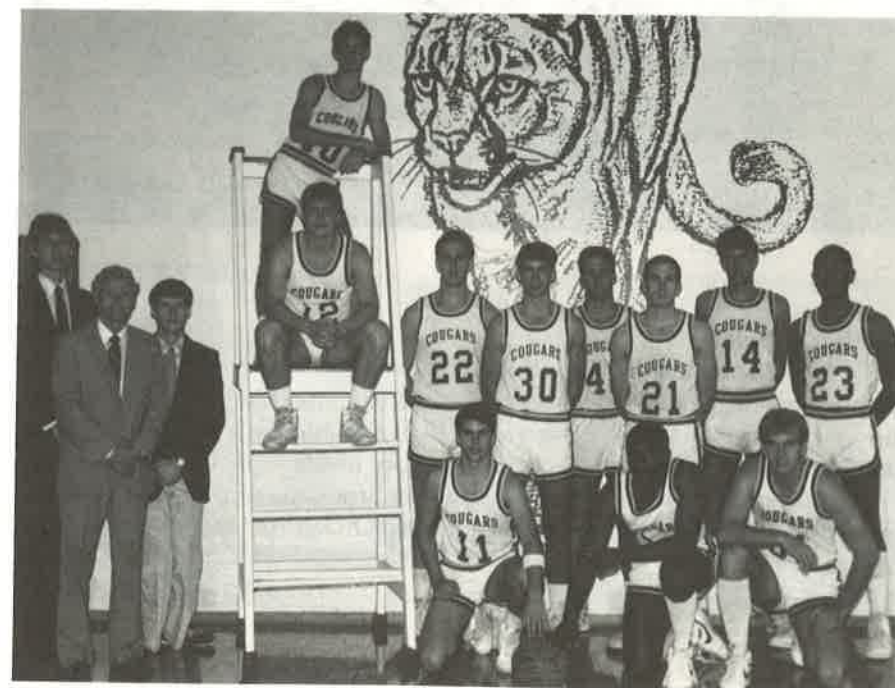
supervisors are located in both. The dorm supervisors are responsible to the Dean of Students for discipline and control in the dormitories.

All full-time students under the age of 25 are required to live on campus unless they are married or live with their parents, grandparents, or guardians. In the event that space is not available in the student residence, outside housing may be arranged by upperclassmen with permission. No married or divorced students will be permitted to live in the dormitories. The College has no accommodations for married students at present. The Admissions Office will assist in obtaining off-campus housing by providing information about area facilities.

Students are permitted to live in residence halls only after agreeing to the provisions governing dormitory living as stated in the **Student Handbook** and on the application for admission.

Students taking less than twelve hours are considered part-time and must receive permission from the Dean of Students to live on campus.

A pre-registration room deposit of \$50, which is applied against rental, should be paid as soon after acceptance as possible, but not later than August 15 for the Fall semester, or December 15 for the Spring semester. Rooms not occupied by the day of Registration will be reassigned, and the deposit will be forfeited.



CAMPUS FACILITIES

Cathcart Hall

This multi-purpose building faces beautiful Tampa Bay. A new 250 seat cafeteria, student lounge, and kitchen occupies the first floor. Student post office boxes are situated in the lobby. The second floor houses administrative offices and four classrooms. Observation decks on both floors facing Tampa Bay provide a wide view of our surroundings. Visitors to campus are welcomed by a hostess in the lobby of Cathcart Hall. Funds for this building were provided through the generous gift of Mr. and Mrs. Harold Paden of Alexandria, Virginia who named it in honor of her parents, Mr. and Mrs. Arthur W. Cathcart.



Dambach Hall

The oldest and most familiar structure on the Clearwater Christian College campus, this building has recently been partially remodeled to accommodate our growth. Dambach Hall, named after W. L. Dambach, a longtime friend and supporter of the College, houses the Admissions and faculty offices, bookstore, science laboratory, computer and typing laboratory, music room, and chapel. The mall area displays an attractive fountain which was a gift to the College from the Class of 1983.

Emmons Hall

The women's residence employs a convenient design for family-style living. Each unit has a carpeted living room, four bedrooms, and a bathroom. The bedrooms are provided with a window shade and window rods for drapes and curtains. The students are required to furnish drapes or curtains and bedspreads. Small rugs may be brought if desired. Students should also bring a desk lamp, bed and bath linens, blankets, pillow, iron and ironing board. A coin-operated laundry is available on campus for student use.



Gymnasium/Men's Dormitory

This double facility is the largest single edifice on the campus. The gymnasium's 12,000 square feet hardwood floor is the site of all home indoor athletic contests. The basketball court is equipped with six backboards, bleachers, and a sound system. On the east end of the court is a stage which is used when the gymnasium is transformed into an auditorium. This arena serves well for banquets and special occasions including Convocation, Baccalaureate, Commencement, and the Central Florida Youth Rally held each Spring on campus.



The east wing of this structure is a two-story men's dormitory. The appointments for each of the 27 hotel-style air-conditioned rooms include carpet, full furnishings, a sink, and two walk-in closets.

The College Library

The Library building, dedicated in 1970, carries out the College's colonial architecture. Remodeled in 1984 to accommodate a growing collection, it presently holds 42,000 volumes and 180 periodical subscriptions. Books are cataloged according to the Library of Congress system and are carefully selected to support the College's programs of study. Back issues of magazines are bound or replaced by microfiche.

The Library has a Learning Resource room which contains audio-visual aids, elementary and secondary textbooks for education students, and a children's literature collection. A Listening Laboratory equipped for listening to audiocassettes or phonograph records can also be used for typing or studying. The Library offers the following services: reference, reservation of audiovisual projectors, inter-library loan, and photocopy machines.

The Library is a member of the Tampa Bay Library Consortium, a resource-sharing group of 50 libraries in seven neighboring counties. This group is studying the advantages of implementing an automated network between member libraries.



"Take fast hold of instruction; let her not go; keep her; for she is thy life."

Proverbs 4:13



Admissions and Matriculation

ADMISSION

Requirements for Admission

Clearwater Christian College offers three student classifications for admission: degree-seeking, non-degree-seeking, and special student status. The basic admission requirements for all individuals are the completed application form with the appropriate \$15 fee, a written testimony of faith and practice (see application form), a recent photograph, and satisfactory letters of recommendation from pastoral, academic, and general sources. In addition, degree seeking students are required to submit transcripts from their graduating high schools and all post-secondary schools they have attended, scores from a recent administration of the ACT or SAT college entry examination, and completed Medical Form.

Clearwater Christian College is committed to nondiscriminatory admission practices regarding race, color, and national origin.

Admissions Procedure

The procedures for applying for admission is as follows:

1. Obtain an application packet from the Admissions Office or from the back section of this catalog.
2. Complete the application form. The form should be submitted with the \$15 fee, a statement testifying of the applicant's faith and practice, and a recent photograph.
3. The application form provides space for the submission of names and complete mailing addresses of individuals whom the applicant selects as references to his or her faith and Christian testimony. Although the applicant is not required to contact these references personally, it is suggested that the individuals given as pastoral, academic, and general references be informed that they will be contacted by the College.
4. Request a copy of a final transcript from the graduating high school and a copy of the official transcript from each post-secondary school attended (for transfer students). Students who are currently enrolled in high school or college should request current transcript copies to be sent upon application, and final copies upon completion of all coursework. A GED diploma may be submitted in place of a final high school transcript.
5. Submit scores from a recent administration of the American College Test (ACT) or the Scholastic Aptitude Test (SAT). Request scores to be sent directly from these organizations to the Admissions Director. The addresses for these agencies are:

for the ACT
American College Testing Program Inc.
Box 168
Des Moines, Iowa 52240

for the SAT

College Board Admission Testing Program
Box 592
Princeton, New Jersey 08540

Scores posted officially on high school or College transcripts may be acceptable. Students registered for later test administrations should place the College's number in the space provided to have the results sent directly to the College. The College's institutional numbers for these organizations are:

ACT - 0715 SAT - 5142

Students who have not taken either test will be required to take the ACT on campus during orientation.

The Admissions Office will maintain contact with the applicant throughout the admission process. An initial response will be mailed to the applicant acknowledging the receipt of the application and a list of items currently missing from the file. Upon receipt of the basic application data and satisfactory review by the Director of Admissions and/or Admissions Committee, a written notification will be released.

Upon acceptance into the College, the applicant is required to submit the required pre-registration fees. In addition, a completed Medical Form, informing the College of the student's physical condition and history, should be submitted. This form should be completed with the assistance of the student's physician.

Admission of Transfer Students

Transfer applicants who are in good standing with the institution previously attended will be considered for admission. Standard admission procedure as specified above should be followed.

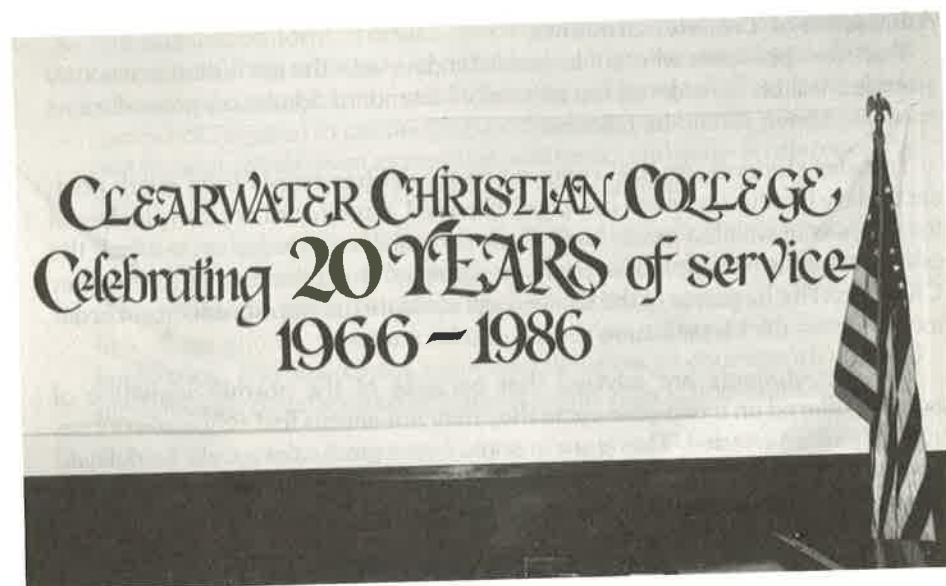
Transfer students are also required to submit transcripts from every post-secondary institution which has been attended. Credits will not be transferred for courses in which a grade lower than C has been recorded or in which the course taken is not applicable to the program of study pursued at Clearwater Christian. The Registrar of the College will evaluate the transfer credits in order to determine the classification of the transfer student.

Transfer students are advised that because of the normal sequence of courses offered on a two-year cycle they may not always find required courses available when needed. Therefore in some cases graduation could be delayed by one year. For this reason transfer students must be careful to follow the prescribed order of courses suggested by their faculty advisors.

Admission of Foreign Students

Students whose citizenship lies in a country other than the United States of America are required to submit a Foreign Student Data Form along with the standard application for admissions. Among the information requested is the validation of the applicant's ability to meet the expenses incurred through attendance at Clearwater Christian. Applicants are required to document the source(s) of income to meet their total cost. Upon acceptance of the information submitted, an I-20 form will be issued by the College to be used by foreign students for entrance into the country. Once admitted into the United States by the Immigration and Naturalization Service (INS), foreign students must be responsible to notify the INS of their whereabouts each year. Foreign students are encouraged to contact the INS (500 Zack Street; Tampa, FL 33602; USA) and/or their own embassies for additional information.

In addition, those applicants who come from non-English speaking countries must take the Test of English as a Foreign Language (TOEFL) and have the scores sent to the Admissions Office. A score of 500 is required for admission to Clearwater Christian College. For information write: Educational Testing Service, Box 899, Princeton, New Jersey 08540, U.S.A. To expedite admission concerns, foreign applicants should provide all admissions requirements including the Foreign Student Data Form and TOEFL scores (if applicable) at least 60 days before the beginning of the term of intended enrollment.



MATRICULATION

Registration

Matriculation into Clearwater Christian College is defined as "a student enrolling for coursework during a specific term." Registration is held at the beginning of each semester during which time the student is expected to choose his courses and properly arrange his class schedule with the assistance and approval of his academic advisor. Returning students are permitted to pre-register their course selections during a given period of time announced in the previous term. However, a student is not considered registered until the financial obligations associated with attendance have been satisfied. Pre-registration and registration periods are listed on the Calendar of Events (see pages 6-10).

Academic Advising

Each student will be assigned a faculty advisor upon acceptance into Clearwater Christian College. The role of the faculty advisor in the academic life of the student is to provide the proper guidance throughout the course of study in the student's chosen major field. Prior to Registration each semester, students must see their faculty advisors to update their program of study and plan for the upcoming terms. The role in guidance played by the academic advisor need not be limited to scholastic achievement and work load. At Clearwater Christian College students often find their academic advisors an indispensable source for spiritual guidance and direction.

Academic Load

The normal academic load for those students intending to complete their courses of study in four years is 16 credit hours per semester. (Some majors require slightly over 128 hours. Students in these majors may occasionally take above the normal load to complete their courses of study in the four-year period.) Students desiring to register for classes in excess of 20 credit hours must obtain approval from the Academic Dean or Registrar in consultation with the academic advisor. Students should seek to maintain a balance between extracurricular activities and academic pursuits. (See **Student Handbook** for suggested ratio.) If such a balance does not exist, the student may be required to reduce his academic load and/or withdraw from excessive extracurricular responsibilities. (See Academic Progress and Probation, page 61) The minimum academic load for full-time students is 12 credit hours.

Academic Schedule Changes After Registration

Changes to the student's academic schedule after registration may be performed by completing a Change Form and submitting it to the Registrar's Office. A Drop/Add period follows each registration day. Courses may be added up to the last date in the period, and courses dropped during this time will not appear on the student's transcript. Students are not permitted to add classes after the last day of Drop/Add. Courses dropped after the Drop/Add

period will be given grades of W, WP, or WF. WP and WF grades are used for courses dropped after the mid-term week. Failure to withdraw officially from a course will automatically invoke the penalties associated with the College's Class Attendance Policy. Students are responsible for full payment of courses dropped after the Drop/Add period. A \$2 fee is added to the Student's account with the submission of each Change Form. Drop/Add periods are listed on the Calendar of Events (see pages 6-10).

Late Registration

Late registrants will be subject to a \$15 late registration fee. Students are required to be present at Registration unless granted prior permission from the Registrar. No student will be permitted to register later than the date stated on the Calendar of Events.

Change of Major

Changing the major course of study is permitted at any point during the degree program after notifying the academic advisor and the Registrar. A Change Form is available in the Admissions Office for this purpose. This form must be completed and signed by the appropriate college authorities before the change of major is official.

Withdrawal from the College

Withdrawal from the College requires completion of a Withdrawal Form obtained from the Registrar. This form must be submitted to the faculty advisor, Academic Dean, and Business Manager of the College before withdrawal becomes official. The effective date of the withdrawal shall be the date on which the student signs the Withdrawal Form or in the case of an unofficial withdrawal, the date affixed by the Registrar once the student has exceeded the 25 percent rule described in the Class Attendance Policy. Calculation of any refunds due is based on that date. Failure to follow the administrative procedure for withdrawal will result in a grade of "WF" in all courses and forfeiture of a financial refund.

Re-Admission to the College

Former Clearwater Christian College students who have been absent from the College one year or more and who wish to re-enroll must file an Application for Readmission. Re-admittance of students is not automatic, but is subject to approval by the Admissions Committee of Clearwater Christian College.

Early Enrollment

Early Enrollment is a program for academically superior high school seniors to enroll in classes on the college level on a part-time basis prior to high school graduation. In addition to the normal admissions requirements the student must have a 3.00 High School GPA, acceptable entrance scores on the ACT or SAT examination, and a personal recommendation from the student's high school administrator.

Class Attendance Policy

It is the desire of the College, and it should be the desire of every student, that all classes be attended. However, since this is not always possible, the following guidelines for class attendance apply:

1. The number of absences allowed per course each semester is determined by the following schedule:

Class meetings per week	Absences allowed
1	1
2	2
3	3
4	4

- a. Absences that occur during the last scheduled class meeting prior to and directly following a holiday break will count as two absences for each class missed.
- b. Excessive absences directly related to emergency situations or extended illnesses can be appealed to the Registrar.
- c. Students missing class on the date of a scheduled test will not be permitted to make up the test or to take it early unless unusual circumstances prevail and approval is granted by the instructor.
- d. Punctual attendance in classes is expected. Three tardies will equal one absence. In the event the instructor is late for class, student should wait 15 minutes beyond the scheduled class starting time before leaving the classroom.

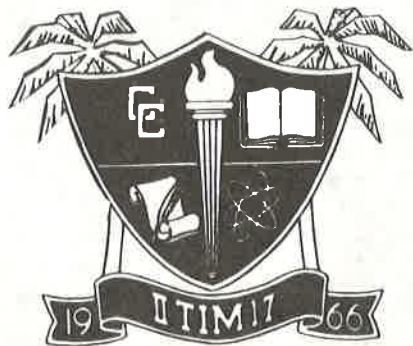


2. **Sanctioned College Activities:** Students will be excused from class to allow for participation in field trips, athletic events, music programs, seminars, etc. as determined by the Academic Dean and/or Dean of Students. Students missing class because of such activities are responsible for the material given during that time. Arrangements must be made for early submission of assignments due on the day(s) of their absence. Make-up of scheduled tests or quizzes should be coordinated with the appropriate instructor and will be taken **prior** to the scheduled date whenever possible. **Sanctioned absences are not applied toward the allowed totals in paragraph one.**

3. All absences in a course that exceed the limits stated in paragraph one will result in that course's final grade being lowered two points per absence. Any student missing 25 percent of the scheduled class meetings for a course, whether sanctioned or otherwise, will automatically be withdrawn from the course and will receive a grade of "WP" or "WF". The 25 percent rule converted to absences is shown below:

Class meetings per week	25% of semester class meetings
1	4
2	8
3	12
4	16

4. All appeals concerning the College's class attendance policy are to be directed, **in writing**, to the Registrar.



Required College Activities

All degree seeking students of Clearwater Christian College are required to attend Convocation, Baccalaureate, and Commencement services held during their term of enrollment. (See **Student Handbook**.)

Testing Program

In order to compare the academic abilities of Clearwater Christian College students with those of students of other colleges and universities, as well as to provide a measurement of progress made during the college career, the following testing program and its uses are discussed below.

1. **College Entrance Examination—ACT.** This test is required of all entering freshmen and transfer students with less than 16 semester hours of transferable credits who have not submitted college entrance test scores to the Admissions Office before orientation week. The test is administered prior to each term during new student orientation on campus. Scores are used for placement in English Composition (EN 101) and College Mathematics (MS 101 or higher level). The fee for this campus administration is \$15.
2. **CLAST—Sophomore Level Examination.** The College Level Academic Skills Test is an achievement test designed by the state of Florida to measure the communication and computation skills expected of students completing their sophomore year in College. The test includes four subtests: essay, writing, reading, and computation. Objective test items are used to measure reading and computation skills. Both objective items and the essay are used to measure writing skills. Test dates are scheduled each year during the months of September, March, and June.

Students attending Clearwater Christian College are required to take the CLAST before earning their sixtieth semester credit hour of post-secondary course work. Transfer students who enter CCC with more than sixty semester hours of transferable credits or who have already successfully passed all subtests of the CLAST examination are not required to take the test unless specifically required for financial aid or teacher certification purposes.

Students failing to pass all sections of the CLAST examination will be required to retake the specific subtest(s) failed at the next test administration date. Individuals failing a specific subtest will be required to participate in a CLAST remedial course and register for a second testing date. After two unsuccessful attempts at passing a given subtest(s), the student's attendance status may be dropped from degree-seeking until all four subtests have been passed. In addition, receipt of aid from state-funded programs such as the Florida Student Assistance Grant and the Florida Tuition Voucher will be discontinued until the student has earned a passing score on all four subtests.

It is suggested that students required to take the CLAST make the necessary arrangements for the test upon completion of the academic courses EN 101, EN 102 (English Composition/Grammar) and MS 101, MS 102 (College Mathematics I & II or higher).

Passing scores on the CLAST for the term August 1, 1986 through July 31, 1989 are as follows:

Reading	Writing	Computation	Essay
270	270	275	4

It is the responsibility of each student to register for the appropriate test date. Students may contact their academic advisors, the College Registrar, or the Financial Aid Director with specific questions or concerns.

3. Proficiency tests are offered at Clearwater Christian College during the first week of each semester. Students who receive a 90% or above will earn a passing mark and be eligible to enter the next level of the course. The title of the proficiency examination will be placed on the student's transcript and the student will receive an "S" for passing the test. Proficiency examinations will not result in the accumulation of credit hours. Proficiency examinations permit the students to waive basic requirements and begin course studies at a higher academic level. The fee for each of these examinations is \$10. Proficiency tests are offered in the following courses:

- | | |
|---------------------------|-----------------------------|
| a. Introductory Typing | e. Elementary Spanish I |
| b. Intermediate Typing | f. Elementary Spanish II |
| c. Introductory Shorthand | g. Intro to Data Processing |
| d. Intermediate Shorthand | h. Computer Programming I |

- | | |
|----------------------------|-------------------------|
| i. Computer Programming II | l. Elementary German I |
| j. English Composition I | m. Elementary German II |
| k. College Mathematics | |

4. College Level Examination Program—CLEP. Clearwater Christian College accepts the transfer of credit for up to 12 semester hours for general examination CLEP scores at the fiftieth percentile based on national norms. The minimum acceptable scores are listed below:

General Exams	Scores
a. English Composition w/Essay	600
b. Mathematics	600
Subject Exams	Scores
a. Biology	50
b. Physical Science	50

5. Advanced Placement. Clearwater Christian will accept Advanced Placement examination scores on the following basis:
 - a. Examination scores must be earned while the student was in the twelfth grade in secondary school and anticipating entry into Clearwater Christian within the upcoming school year.
 - b. Examination scores must be in the range of 3-5.
 - c. The College recognizes a maximum of four Advanced Placement examinations.
6. Graduate Record Examination, GRE. Many graduate and professional schools and fellowship sponsors request that their applicants take the GRE. Scores on either the GRE General Test, a Subject Test, or both are used by admissions or fellowship panels to supplement undergraduate records and other indicators of students' potential for graduate study. The scores provide a common measure for comparing the qualifications of applicants from a variety of colleges and universities with different standards. They also contribute toward making the evaluation of grades and recommendations a fairer process.

Clearwater Christian College requires all candidates for the bachelor's degree to take the GRE during their senior year of study. Current information on the test and preparation classes are offered to seniors in GS 401 Senior Seminar.

Enrollment Status

Clearwater Christian College identifies all applicants under one of the following classifications: degree-seeking, non-degree-seeking and special student. The non-degree-seeking status identifies the individual who desires to earn academic credit for purposes other than a degree program. Special student status is reserved for auditing students. To change one's status, approval must be obtained from the Registrar.

Correspondence Credit

A total of nine hours of credit from approved correspondence schools may be accepted to meet degree requirements at Clearwater Christian College. All such courses must be approved in advance by the Academic Dean or Registrar.

Transient Enrollment

On occasion, the College permits degree-seeking students to enroll for a course at another institution in order to complete degree requirements at CCC. As a transient student, a Transient Enrollment form may be obtained from the Registrar's Office. Approval must be received from the student's advisor and the College Registrar prior to the term of enrollment before transient credit will be entered on the student's program of study and official transcript. A minimum grade of C must be earned for transfer purposes.



*"Blessed be the Lord, who daily
loadeth us with benefits, even the God
of our salvation."*

Psalm 68:19



Financial Information

FINANCIAL INFORMATION

The cost of attending Clearwater Christian College is reasonable because of the faithful support received from interested churches and friends who desire to invest in Christian education.

Before arriving on campus, students and parents should become aware of the costs involved and make adequate preparation to meet the minimum financial requirements outlined below.

EXPENSES FOR 1987-88 (Subject to change in 1988-89)

Full-time students

Tuition per semester\$1,525

The tuition rate is based on a normal course load of 12-17 semester hours. A student who enrolls for additional hours is charged at the rate of \$60 per semester hour above 17.

Room and board per semester (includes Florida state tax) 1,275

Matriculation fee per semester 50

Part-time students

Tuition per semester hour for a course load of 1-11 semester hours 120

Room and board per semester (includes Florida state tax) 1,275

Matriculation fee per semester 50

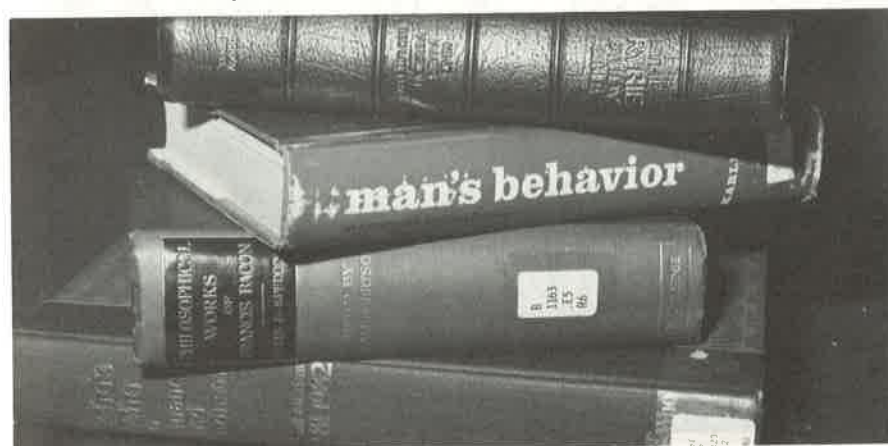
Summer School

Tuition per credit hour 80

Matriculation fee per semester 20

Room and board per session 250

Tuition and matriculation fees for summer school are due at Registration and are non-refundable. Room and board may be paid in advance on a weekly basis.



Expenses for Full-Time Students 1987-88

*Tuition per semester	\$1,525.00
Room and board per semester	1,275.00
Matriculation per semester	50.00
Accident insurance per semester (6 hours or more)	40.00
ACT Residual examination fee	15.00
Application fee	15.00
Automobile Registration	5.00
Change of course (drop/add)	2.00
CLAST examination fee	15.00
Computer lab fee	25.00
#Fine arts fee	120.00
Graduate Record Examination fee (required of all seniors)	29.00
Graduation fee	50.00
Health fee per semester (resident student only)	16.00
Installment agreement fee	15.00
Late Registration fee	15.00
Orientation (resident)	25.00
(commuter)	15.00
Pre-Registration deposit	25.00
Science Lab fee	20.00
Student Teaching fee	25.00
Transcript request fee	2.00
Typing class fee	15.00

*For 12-17 semester hours. Additional hours are \$60.00 per semester hour.
For 1-11 semester hours the rate is \$120.00 per credit hour.
#Non-music majors only (per credit hours of applied instruction).

ALL CHARGES ARE SUBJECT TO CHANGE IF NECESSARY.

APPLICATION FEE: A \$15 application fee must accompany application for admission. This fee is non-refundable.

PRE-REGISTRATION DEPOSIT: Upon acceptance to the College, new students are required to forward the \$25 pre-registration deposit to the Admissions Office. This fee is non-refundable and applied to the total cost of attendance at registration. Returning students are required to submit this deposit with their pre-registration forms.

MATRICULATION FEE: The \$50 matriculation fee covers the cost incurred through registration, admissions to official college functions, student activity fees and purchase of a college yearbook.

ACCIDENT INSURANCE/HEALTH FEES: Due to the size of the College group, all students who register for six or more hours are required to participate in the insurance program. Information on the provisions and benefits of the program is available through the Business Office. The Health service fee, required of resident students, covers the expenses incurred through the use of the College Infirmary.

METHOD OF PAYMENT: The following non-refundable fees are due prior to registration: application and orientation fees (new students), and pre-registration deposits. All other charges are due at registration. Students unable to pay in full will be permitted to register on an installment basis. The installment plan includes a minimum payment toward tuition, room/board, and required insurance fees of \$700 for resident students and \$400 for commuting students. Students will be required to sign a promissory agreement acknowledging responsibility for paying the outstanding balance and applicable interest in three equal payments. Installment due dates for the Fall semester are October 1, November 1 and December 1 and for the Spring semester: February 10, March 10, and April 10. A \$15 installment fee will be charged at registration. A three day grace period will be observed at each due date before a 1% interest charge is added to the unpaid balance. The Business Office will send a statement of account to students with outstanding balances 15 and 5 days prior to the designated due date. Students who do not meet their full installment payment within 15 days of the due date will not be permitted to continue in class. Students expecting to satisfy the minimum down payment with awards from financial aid programs should observe the deadlines given for the availability of those funds at registration. Installment agreements are finalized at registration with the Business Office.

In the attempts to provide alternate considerations for students and their parents, the College has also made available a second installment program plan through the Academic Management Services, Inc. For a minimum installment fee, parents may prepay a large portion of the cost of attendance prior to admission. Balances carried into the term will not be charged an interest penalty. Brochures on this program can be obtained through the Financial Aid Office upon request.

PART-TIME ENROLLMENT: Students who register for less than 12 hours are considered part-time students and will be charged \$120 per semester hour for tuition. Although a resident student may be given special permission to enroll part-time, they will be considered full-time for fee purposes. Matriculation for part-time enrollment is \$50 for semester loads of 6-11 hours and \$10 for semester loads of 1-5 hours. A student who audits a class is expected to pay tuition charges of \$25 per semester hour.

SUMMER ENROLLMENT: Students who register for summer school sessions will be charged \$80 per credit hour for tuition. For summer school, tuition is due at registration. Any student who registers for a course is required to pay the tuition and other fees whether or not he completes the course. Room

and board may be paid weekly in advance. The room and board fee is \$250.00 per session.

REFUNDS: Both parents and students alike should be aware of the financial inadvisability of withdrawing from college before the end of any term. In the event a student should withdraw before the end of the eighth full week of classes, the following percentages of only tuition, room and board, and specific course/lab fees are refunded:

First week 95%	Fourth week 70%	Seventh week 40%
Second week 90%	Fifth week 60%	Eighth week 30%
Third week 80%	Sixth week 50%	After eight full weeks— NO REFUND

No other fees or charges will be refunded. Refunds cannot be granted if the student has attended eight weeks or more, unofficially withdraws, is dismissed as a result of disciplinary action, drops a course after the last day for changes of their schedule, or fails to submit to exit interviews required by the College.

Students who obligate themselves to the College for a room are not eligible for a refund or credit if they leave the campus residence halls after the date of late registration for off-campus housing.



FINANCIAL AID

In recent years the cost of attendance has risen steadily at nearly every college in the United States. It is the belief of Clearwater Christian College that the final responsibility for bearing this cost rests with the student and his parents. We have not ignored the difficulty that the current inflationary trend has placed on some families of limited financial means. We have, for this reason, made available several financial aid programs to assist the needy Christian student in meeting his obligations. These programs must be administered in a sound and equitable manner so as not to affect the financial stability of the College or compromise its philosophic and historic aversion to directly receiving federal and state funds.

GENERAL INFORMATION: Financial aid is divided into categories such as scholarships, grants, loans, or employment opportunities. Sources for these programs may be various agencies, foundations, organizations, individual donors, or the College itself. Scholarships and grants are usually regarded as "gift" assistance, and repayment is not required. Special provisions for eligibility and/or continued participation may be a part of the program design. Loans are offered at competitive interest rates and, in most cases, are repayable over a period of time upon the student's departure from college. Students participating in employment programs are paid on an hourly basis with earnings applied directly to their accounts.

QUALIFICATIONS FOR FINANCIAL AID: Students are required to meet the specific criteria of each financial aid program as outlined in the various program applications. In general, to qualify for the Pell Grant, Guaranteed Student Loan and PLUS/Supplemental Loans, and the Florida Student Financial Assistance Programs, a student must:

1. be a U.S. citizen or a eligible non-citizen;
2. be enrolled in good standing (minimum of 6 semester hours for loans or 12 semester hours for state aid);
3. be enrolled for the purpose of obtaining a degree;
4. be registered with the Selective Service (if applicable);
5. be making satisfactory academic progress (see page 50);
6. not be in default on a federal student loan or owe a refund on a federal grant received at any institution of higher education; and
7. demonstrate financial need (except for Florida Tuition Voucher Fund and Florida Undergraduate Scholars Fund) as explained below.

Financial need is defined as the difference between the cost of attendance and the family's ability to contribute to the student's education. Students are encouraged to use the financial aid need-analysis services of the American College Testing (ACT) Service to determine this need, by completing the ACT Family Financial Statement which can be obtained from most high school guidance offices, or by request from our College's Financial Aid Office.

FINANCIAL AID PROGRAMS:

I. GRANTS

- A. Pell Grant.** This grant is provided by the U.S. Department of Education and is based solely on financial need. The Pell Grant is considered to be the "foundation" of the financial aid package and may be combined with other sources of aid to meet the cost of education. Actual award amounts are determined by the number of semester hours taken each semester. The maximum award is \$2,300 for the 1987-88 academic year and \$2,500 for the 1988-89 academic year.
- B. Florida Student Assistance Grant (FSAG).** The FSAG is provided by the Florida Department of Education to Florida residents who meet eligibility criteria and who demonstrate remaining financial need after their Pell Grant eligibility has been considered. The annual award ranges from \$200 to \$1,200.
- C. Florida Tuition Voucher Fund.** The Voucher is provided by the Florida Department of Education to Florida residents who meet eligibility criteria and attend an accredited, independent, non-profit, Florida college. Financial need **is not** a matter of consideration for this award. The annual award ranges from \$750 to \$1,000.
- D. Florida Undergraduate Scholars Fund.** This annual award of \$1,500 is provided by the Florida Department of Education to Florida high school seniors who meet eligibility criteria and have obtained any one of the following:
1. recognition by the National Merit Scholarship Corporation as a "scholar" or "finalist";
 2. a 3.5 unweighted grade point average (GPA) on a 4.0 scale, or equivalent, in high school subjects accepted for credit toward a diploma, and have an ACT composite score of 28 or above or a combined SAT score of 1200 or above; or
 3. a Florida Academic Scholars Certificate.
- E. Jose Marti Scholarship Challenge Grant Fund.** This award is provided by the Florida Department of Education to Florida residents who are either Hispanic American or of Spanish culture with origins in Mexico, South America, Central America, or the Caribbean, regardless of race. This is a need-based grant of \$2,000 per academic year, contingent upon the availability of matching contributions from private sources.
- F. Seminole/Miccosukee Indian Scholarship Program.** This program is designed to assist Florida Seminole and Miccosukee Indians. Award is based on financial need as determined by standards established by the respective tribe and the Florida Department of Education. The maximum annual award is \$2,000.



II. LOANS

- A. Guaranteed Student Loan (GSL).** The GSL enables a student whose attendance is at least half-time (6 hours per semester) to make application directly to a participating lender. The loan is granted for a period of one academic year. The student may borrow up to \$2,625 per year for the first two years of study and \$4,000 per year thereafter (maximum \$17,250 in five years). Eligibility is based upon the financial need of the family of the dependent student or that of the independent student as determined by a formula involving income, assets, college costs, and use of other available financial assistance programs. Payments begin six months after the student graduates, drops to below half-time status, or withdraws from college.
- B. PLUS/Supplemental Loans.** Parents may borrow up to \$4,000 per year (maximum \$20,000 in 5 years) for each child who is enrolled at least half-time and is a dependent. Independent students may borrow these same amounts. Annual cost-of-attendance *minus all financial aid* (including GSL) awarded for the period determines the actual loan amount (not to exceed \$4,000) the borrower is eligible for. Payments usually begin within 60 days after the loan is disbursed.

III. SCHOLARSHIPS

The following scholarships are College-funded and are applied toward the student's college costs, excluding off-campus living and transportation expenses. Actual award amounts may be less than stated, depending upon aid available from other financial aid programs.

- A. Academic Scholarship.** Entering first-time freshmen (includes transfer students with less than 26 semester hours earned and a cumulative GPA of 3.25 or above) who have an ACT composite score of 21 through 25, or a combined SAT score of 925 or above, but less than 1120 are eligible. Award amount is \$400 each semester for full-time students and \$30 per semester hour for part-time students. Students must earn at least a 3.25 GPA with no incomplete grades for each academic year in order to maintain eligibility for the following year.
- B. President's Scholarship.** Entering first-time freshmen (includes transfer students with less than 26 semester hours earned and a cumulative GPA of 3.50 or above) who have an ACT composite score of 26 or above or a combined SAT score of 1120 or above are eligible. An Academic Scholarship recipient (transfer students excluded) who completes his first year of studies with a GPA of 3.50 or above is eligible for the President's Scholarship the following year. Award amount is \$750 each semester for full-time students. Part-time students are not eligible. Students must earn at least a 3.50 GPA with no incomplete grades for each academic year in order to maintain eligibility for the following year. A recipient whose GPA falls below 3.50 but is at least 3.25 is eligible for the Academic Scholarship.
- C. Christian Worker Scholarship.** Full-time Christian workers or the dependents of a full-time Christian worker whose income is the major source of support for the family are eligible. Award amount is \$400 each semester for full-time students and \$30 per semester hour for part-time students.
- D. Christian Teacher Scholarship.** This award is designed to assist individuals teaching full-time at a recognized Christian day school, and to assist those who temporarily interrupt their teaching careers to further their learning in the field of education. Award amount is \$400 each semester for full-time students and \$30 per semester hour for part-time students.
- E. Family Scholarship.** Families with more than one member enrolled at the College at the same time are eligible. Award amount is \$100 each semester for full-time students and \$10 per semester hour (total not to exceed \$100) for part-time students.
- F. Special Assistance Scholarship.** This program is designed to assist students with extreme financial need. Other eligibility criteria include

Christian character and service, satisfactory academic history, and participation in other financial aid programs. Award and program design vary from student to student, and a limited number of applicants are considered annually.

G. John W. Hall Memorial Scholarship. Education majors with Junior or Senior status who have earned at least 24 semester hours at Clearwater Christian College are eligible. Recipients are selected through an application process by the College Financial Aid Committee. There are two awards ranging in value from \$750 to \$1,000 each academic year. Recipients are not eligible for subsequent awards.

H. Faith Soracco Memorial Scholarship. Bible, English Bible, and Biblical Literature majors with Junior or Senior status who have earned at least 24 semester hours at Clearwater Christian College are eligible. Recipients are selected through an application process by the College Financial Aid Committee. There are two awards ranging in value from \$750 to \$1,000 each academic year. Recipients are not eligible for subsequent awards.

I. Muriel Hall Scholarship. Business and Secretarial Science majors with Junior or Senior status who have earned at least 24 semester hours at Clearwater Christian College are eligible. Recipient is selected through an application process by the College Financial Aid Committee. This award ranges in value from \$750 to \$1,000 each academic year. Recipient is not eligible for subsequent awards.

IV. CAMPUS WORK

On-campus work is available to resident students with financial need. Participating students can work up to 20 hours per week and could earn a maximum of \$900 per semester. All earnings are applied directly to student accounts. The College can provide work opportunities to only a limited number of students and cannot guarantee the work necessary to meet the student's obligation to the College for his expenses. Campus work opportunities are considered a privilege, and the student's work must be satisfactory in order to continue.

APPLICATION PROCEDURES: As stated previously, the Pell Grant is the foundation of the College's financial aid program, and as such each student is required to have his Pell Grant eligibility determined by submitting either the American College Testing Service Family Financial Statement (FFS) or the College Scholarship Service Financial Aid Form (FAF); the FFS is preferred for our purposes. For Florida residents, the FFS and FAF each have a separate section which must be completed in order to determine eligibility for the Florida Student Assistance Grant (FSAG). The Pell Grant by itself can be applied for any time prior to or during the academic year. But, in order to be considered for the FSAG, the FFS or FAF must be filed in time to ensure it is received by the respective need-analysis service no later than April 15.

Application for the Florida Undergraduate Scholars Fund is made during the student's senior year in high school, through the high school guidance office. Students should see their high school guidance counselors for further details. Filing deadline is April 1.

Application for other Florida Student Financial Assistance Programs, College-funded scholarships (except Memorial and Donor), and Campus work is initiated by the College once a student has been accepted for admission. Appropriate applications will be sent to the student, and the completed forms are returned to the College for further processing.

Eligible Juniors and Seniors may apply for College Memorial and Donor Scholarships during the Spring semester, prior to April 1.

Guaranteed Student Loan (GSL) and PLUS/Supplemental Loan applications can be obtained from the College's Financial Aid Office or from any participating lending agency in the student's community. Be reminded, however, that a GSL application cannot be processed until a FFS or FAF has been filed to determine Pell Grant eligibility and the Expected Family Contribution (amount the student/family is expected to pay toward the cost-of-attendance). Loan applications may be made any time prior to or during the academic year. Loan processing normally takes 6-8 weeks.

FINANCIAL AID DEADLINES: Pertinent filing deadlines have been identified in the Application Procedures section immediately above. While some programs do not have deadlines that fall prior to the start of the academic year, it is highly recommended that all financial aid programs of consideration be applied for as early as possible. This will assist the student with his financial aid planning in order to have anticipated awards available at registration.

All students **must reapply** for any form of financial aid each academic year.

SPECIFIC GUIDELINES:

1. Financial aid, like attendance itself, is a privilege and not a right. Students who are able to pay their entire bill should thank the Lord for His provision and do so without aid. Students receiving financial aid should thank the Lord for this source of provision and take care to see that all money received is used to meet legitimate College-related expenses.
2. Students are encouraged to investigate financial aid offerings other than the College's programs through organizations such as their home church, parents' employers and unions, community organizations, etc.
3. Requests for financial aid will only be considered after the appropriate application forms have been submitted to the College's Financial Aid Office.
4. Students desiring to participate in any of the financial aid programs administered by the College are expected to apply for the Pell Grant.

5. Transfer students must submit a financial aid transcript from every post-secondary institution attended, before they will be considered for financial aid.
6. A student who qualifies for both the Christian Worker and Academic/President's Scholarships will be awarded only the Academic/President's Scholarship. In the event the student loses eligibility for this scholarship, he may reapply for the Christian Worker Scholarship.
7. Students must meet the College's standards of satisfactory academic progress as described below to maintain eligibility for continued financial aid.
8. Foreign students are required to provide evidence of adequate financial aid support to cover the expenses they expect to incur for their initial academic year. The College's Foreign Student Data Form is available for this purpose. The majority of foreign students are not able to participate in non-College-funded financial aid programs unless they are classified as eligible non-citizens.

SATISFACTORY ACADEMIC PROGRESS: Standards of satisfactory academic progress for financial aid recipients are defined in the text that follows and apply to all financial aid programs administered by the College.

- I. Students must meet an academic performance requirement based on the following schedule:

Semester hours attempted in college	1-15	16-29	30-44	45 and above
*Required cumulative grade point average (GPA)	1.75	1.85	1.95	2.00

- * A student once placed on academic suspension must subsequently maintain a cumulative GPA of 2.00 or above regardless of the number of hours attempted.
- * As a condition of renewal of the Florida Undergraduate Scholars Fund, a student must maintain a cumulative GPA of 3.20 or above.
- * As a condition of renewal for the Florida Student Assistance Grant, Florida Tuition Voucher Fund, or the Seminole/Miccosukee Indian Scholarship, a student must maintain a cumulative GPA of 2.00 or above, and earn a GPA of at least 2.00 for each term aid was received or have a GPA below 2.00 for only one term during the previous academic year and be eligible for continued enrollment.
- * As a condition of renewal for the Jose Marti Scholarship Challenge Grant Fund, a student must maintain a cumulative GPA of 3.00 or above, and earn a GPA of at least 3.00 for each term aid was received or have a GPA below 3.00 for only one term during the previous academic year and be eligible for continued enrollment.

- II. Students must make measurable progress toward degree completion by successfully completing at least 75 percent of all hours attempted each semester (the spring semester includes the two summer sessions). This includes authorized hours attempted at another college or university while continuing enrollment with Clearwater Christian College.

Students are limited as to the total number of hours they may attempt within their degree programs. Hours that may be attempted equals hours required for a specific degree divided by 0.75, with result rounded up to next whole number where necessary. The number of hours attempted includes any transfer hours accepted by the College for application toward a specific degree. Financial aid eligibility for students who change from one degree program to another is limited to the maximum hours attempted for the new degree program.

III. Hours Attempted/Completed

Courses completed with grades of A, B, or C are considered as having been successfully completed. Within each major's program of study there are selected courses that require a grade of C or better to be considered satisfactorily completed. Those courses not so identified are considered to be satisfactorily completed with a grade of D. Audit courses and courses with grades of W, WP, WF, F, or I will be counted as hours attempted but not satisfactorily completed. The grades W and WP **are not** included in the cumulative GPA; however, the grade WF is calculated as a failing (F) grade and **is** included in the cumulative GPA. An incomplete (I) grade is calculated as a failing (F) grade until the course has been satisfactorily completed. Grades of P, S, or U are not considered against hours attempted, nor included in the cumulative GPA.

Credits given for Advanced Standing/Placement or CLEP are not included in hours attempted.

Courses that are non-credit or remedial in nature will be calculated the same as credit courses when determining satisfactory progress.

All repetitions of a course will be considered toward the total number of hours attempted, but only the grades associated with the second and subsequent attempts to complete the course will be included in the calculation of the cumulative GPA (see Academic Forgiveness Policy, page 60). Once a course has been successfully completed, it cannot be repeated in an attempt to satisfy enrollment status requirements for the various financial aid programs.

IV. Financial Aid Warning

A student will be placed on financial aid warning when one or both of the following occurs at the end of a semester:

1. Student's cumulative GPA drops below the required GPA as stated in paragraph I above.
2. Student does not successfully complete at least 75 percent of the cumulative hours attempted.

A student placed on financial aid warning will continue to be eligible for disbursements of previously made financial aid awards for the following semester.

V. Financial Aid Probation

A student will be placed on financial aid probation when one or both of the following occurs at the end of a semester during which a student was on financial aid warning:

1. Student's cumulative GPA was not increased to meet the required GPA as stated in paragraph I above.
2. Student does not successfully complete at least 75 percent of the cumulative hours attempted.

A student placed on financial aid probation will be ineligible to receive further financial aid and all awards will be suspended until the student regains eligibility.

VI. Academic Suspension/Withdrawal

A student placed on academic suspension will not be permitted to enroll for the following semester and will have his eligibility for all financial aid suspended.

A student may withdraw from the College only once without affecting his financial aid eligibility upon re-enrollment. A second withdrawal from the College will terminate the student's future eligibility for financial aid.

VII. Reinstatement of Financial Aid Eligibility

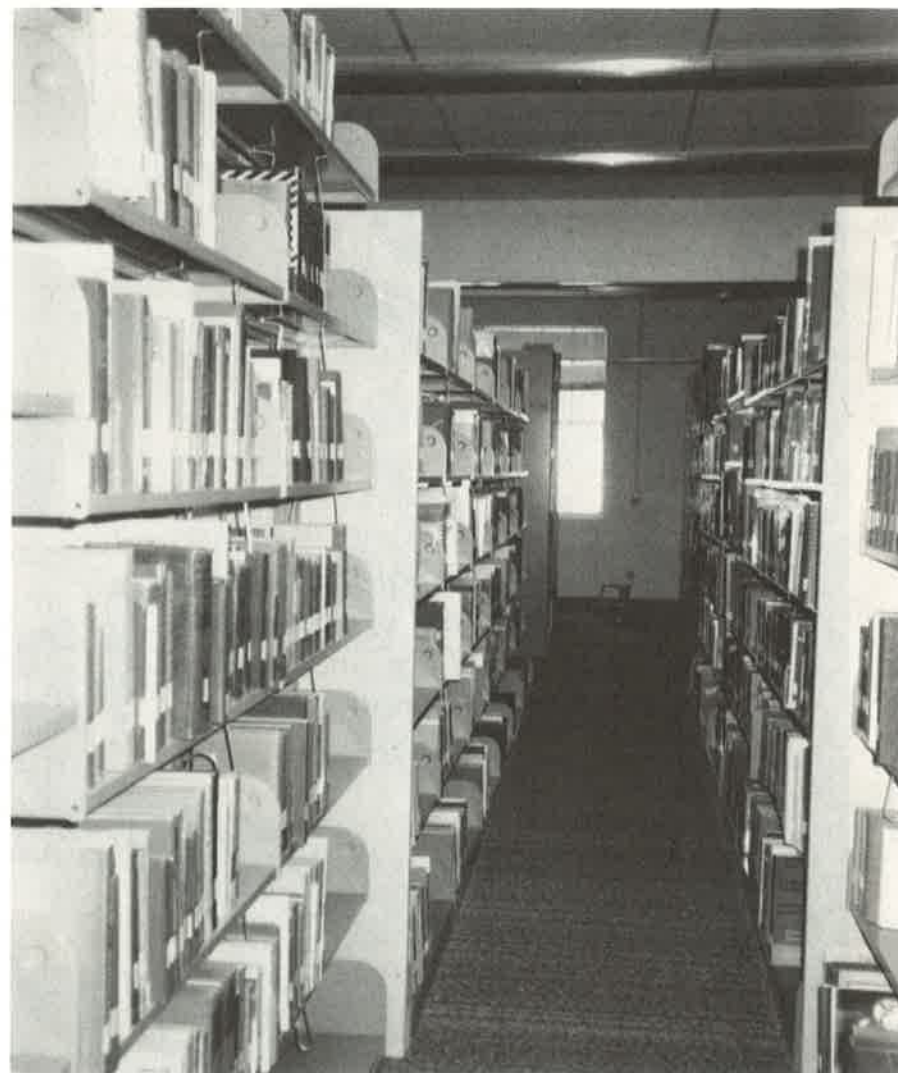
A student whose financial aid eligibility has been suspended for academic reasons must attend the College for a minimum of one semester at his own expense until the standards of satisfactory academic progress are met. A reinstatement, however, does not guarantee that the student will be awarded financial aid for the next period of enrollment. Awards are based on several factors, including the availability of funds and individual program requirements at the time of reinstatement.

VIII. Appeal Process

A student who has been terminated from financial aid eligibility and feels that mitigating circumstances existed that adversely affected the student's ability to maintain satisfactory academic progress, may request a formal review of his eligibility. Circumstances which may be considered for this review include: extended illness, accident, death in the family, personal tragedy, active military orders, or other situations beyond the student's control which prevented him from meeting the minimum standards. A student who wishes to appeal the eligibility decision must follow the procedure listed below:

1. The student must submit, in writing, an appeal to the Financial Aid Office no later than 30 days after the date of the termination notice.

2. The appeal must clearly state the circumstances which prevented the student from meeting the standards, along with any supporting documentation from sources other than the student.
3. The Financial Aid Committee will review the appeal and will determine if eligibility can be reinstated. The student will be advised, in writing, of the Committee's decision within 15 days of the date of appeal.



Clearwater Christian College



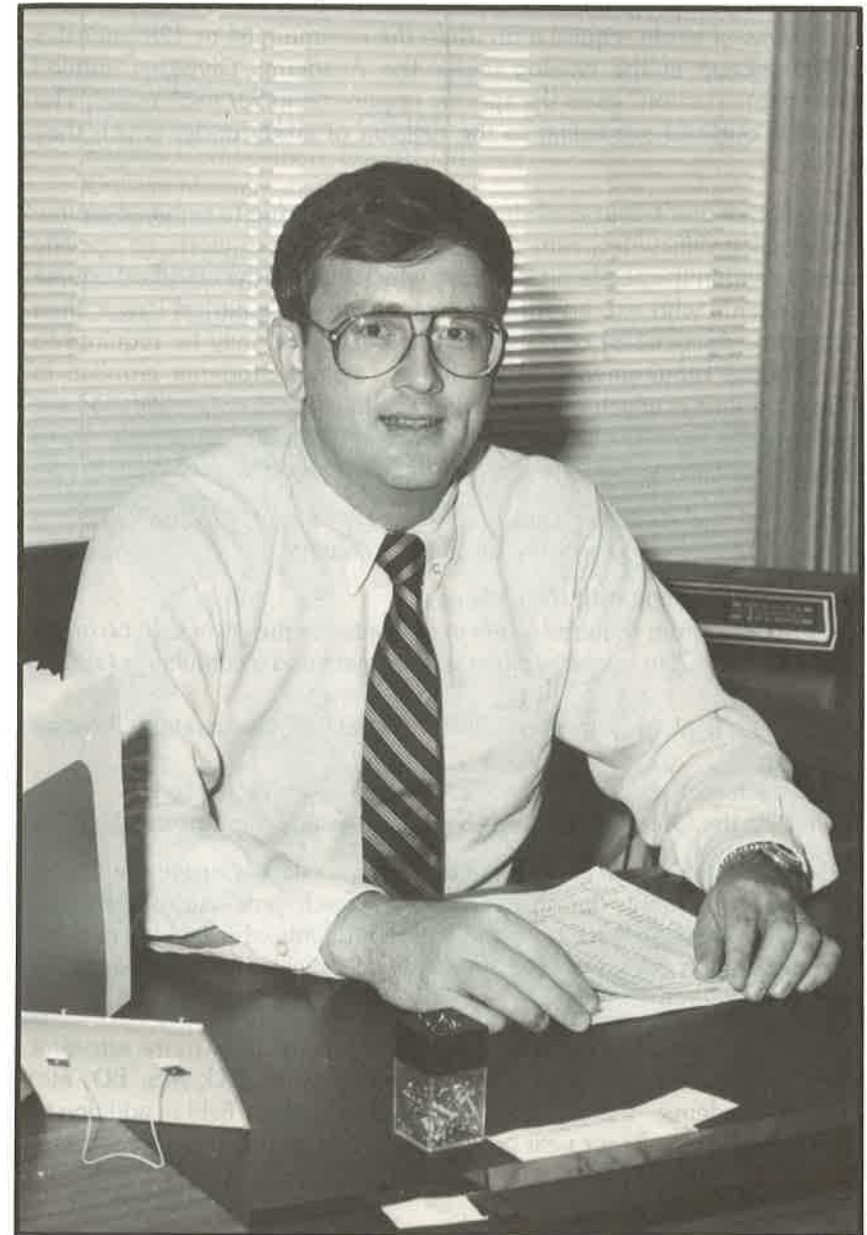
"For God hath not given us the spirit of fear, but of power, and of love, and of a sound mind."

*II Timothy 1:7
(College Verse)*



"The entrance of thy words giveth light; it giveth understanding unto the simple."

Psalms 119:130



Academic Information

DEGREES OFFERED

Clearwater Christian College offers the two-year Associate of Science (A.S.) degree, the four-year Bachelor of Science (B.S.), and Bachelor of Arts (B.A.) degrees. Associate of Science degree programs require a minimum of 64 semester credits. Bachelor of Science and Bachelor of Arts degrees are designed as four-year programs and require a minimum of 128 semester credits. Some programs of study require more than the minimum 64 or 128 semester hours. The section in the catalog under the Academic Divisions entitled "Programs of Instruction" gives the specific requirements for each major. The programs are outlined according to the division of study under which they appear.

The duration of one's course of study may be longer due to reduced course loads, scheduling difficulties, remedial or repeated course work, or specific requirements within the academic program which exceed the standard course of study. Students who extend their course work over a period longer than three years (for Associates) or six years (for Bachelors) may be required to meet the course requirements of the latest catalog. Students enrolled in education programs in which requirements for State Teacher Certification are established by the State of Florida may be expected to adjust their program to meet the current Florida Department of Education requirements.

Regardless of the student's choice of degree program, all candidates for graduation are required to meet the following standards:

1. Be in good standing with the College;
2. Earn the minimum required hours in their degree program with no grade lower than a "C" in a major course requirement and a cumulative GPA of 2.00;
3. Take their final 24 semester hours of study at Clearwater Christian College;
4. Earn satisfactory scores on the CLAST as a sophomore, and
5. Complete the Graduate Record Exam (four-year programs only).

The Faculty and Board of Directors of the College review the list of candidates for graduation during the Spring of each year. All degrees, are awarded at the annual Spring Commencement. Students who finish all requirements for graduation during the Fall semester will receive their degrees at the following Spring Commencement.

Clearwater Christian College considers that a total of 18 or more semester hours of credit in one area with the same prefix code (BU, MS, ED, etc) constitute an academic "minor". Students desiring a minor field in addition to the minor in Bible that all four-year graduates earn must notify the Registrar in writing.

GENERAL EDUCATION REQUIREMENTS FOR ASSOCIATE DEGREES

Candidates for the Associate of Science Degree must complete 24 semester hours of general requirements as listed below. Additional studies in these fields may be taken as electives. In addition to these general requirements, both major programs (Preschool Education and Secretarial Science) list other required courses.

<i>General Requirements</i>	Semester Hours
Freshman Orientation, GS 101	1
English Composition, EN 101, 102	6
College Mathematics, MS 101	3
Bible Survey, BI 101, and 102 or 103	6
Modern Religious Issues, CE 106	2
Basic Bible Doctrines, BI 411, 412	6
Career Planning, GS 201	0
Total:	24



GENERAL EDUCATION REQUIREMENTS FOR BACHELOR DEGREES

Candidates for the Bachelor of Arts and Bachelor of Science degrees must complete 67 semester hours of general requirements as listed below. These requirements comply with those of the Florida Department of Education for State Certification (Chapter 6A-4.06). Additional studies in these fields may be taken as electives. In addition to these general requirements, each major program lists other required courses.

		Semester Hours
Area I	Arts and Communication (12 semester hours)	
	1. English Composition	6
	2. Speech, Oral Interpretation, Business Communications*; or Foreign Language	6
Area II	Human Adjustment (27 semester hours)	
	1. Bible requirements (Survey, Doctrines, Modern Religious Issues, Bible Elective)	20
	2. Physical Education Activity#	2
	3. General Psychology or Introduction to Philosophy+	3
	4. Freshman Orientation and Senior Seminar	2
Area III	Science and Mathematics (10 semester hours)	
	1. General Biology or Physical Science-Survey with lab	4
	2. College Mathematics, I, II or higher	6
Area IV	Social Science (9 semester hours)	
	1. General Sociology, Economic Concepts, American Government, World Geography, or Communism	3
	2. Western Civilization or United States History Surveys	6
Area V	Humanities (9 semester hours)	
	1. American or English Literature Surveys	6
	2. Fine Arts@, Music Appreciation or Intro. to Fine Arts	3
Total:		67

* Business Communications is required for Business Administration majors.

- # P.E. Activity is not required of students who have completed military service or are over 25 years of age.
- + Education majors must take General Psychology; B.A. candidates must take Introduction to Philosophy.
- @ Additional Fine Arts hours not required for Bible and Business Administration majors.

Grading System

Courses completed satisfactorily are applied toward the graduation requirements on the basis of semester credit hours. Normally, one credit or one semester hour represents 50 minutes of class instruction per week for one semester. One semester consists of sixteen weeks of instruction including final examinations.

Each student's academic progress is evaluated and measured on a numerical percentage of 100. The numerical grade is translated into a letter grade according to the following scale:

94 - 100 =	A
85 - 93 =	B
73 - 84 =	C
67 - 72 =	D
Below 67 =	F

The following letter grades with their explanation may be placed on the student's grade and/or transcript reports:

A—Excellent	U —Unsatisfactory
B—Good	P —Pass
C—Average	W —Withdrawn
D—Poor	WP—Withdrawn Passing
F—Failure	WF—Withdrawn Failing
I —Incomplete	R —Repeated Course
S—Satisfactory	AU—Audit

The Registrar's Office uses the four point system in the computation of grade point averages. Grades used in the computation of averages are A-4 points, B-3 points, C-2 points, D-1 point, F-0 points, WF-0 points, and I-Incompletes—0 points.

Transcripts and grade reports indicate the following information: hours attempted; hours earned; hours used in computing grade point averages (GPA); quality points earned; term and cumulated totals; and semester/cumulative grade point averages (GPA's). Grade point averages are found by dividing the number of quality points earned by the number of hours used for computing GPA.

Students who do not complete the requirements of a specific course by the end of the term in which the course is being taken will receive an academic

grade of "I". "I" grades will remain on the student's transcript until the work has been completed and replaced by the proper academic grade of A, B, C, D, or F at the deadline set by the class instructor within ninety (90) days of the term's conclusion, whichever comes first. Incomplete grades are treated as failing grades to encourage the student to resolve the concerns quickly.

Academic Forgiveness Policy

Students are permitted to repeat courses where grades of F and WF are earned. Grades of D may also be raised, if the course is a requirement of their major area and requires a minimum grade of C. Repeated course entries will be followed by the letter "R". Only the repeated course with its specific quality points will be used in the overall grade point average. The grade on the initial course will be replaced by a grade of "R" and will not be used in the overall grade computation.

The forgiveness policy may be utilized only by degree-seeking students who have taken the repeated course(s) at Clearwater Christian prior to the receipt of their first bachelor's degree. The student can utilize the policy only once per course and to a maximum of five different F, WF, or D courses. Students should consult the Registrar's Office prior to registration each term to assure that the policy is applicable to their specific concern.

Remedial Courses

Due to academic deficiency, students may be required to take remedial courses such as Basic Mathematics, MS 099 or Basic English, EN 099. Quality points earned will be used to determine term and cumulative GPA's. Effective Reading, EN 160 or Effective Composition, EN 170 may also be required to remediate specific skill areas. Credits earned in these classes may be applied as general electives in the student's program.

GRADUATION HONORS

Graduation honors are reserved for those students who have earned a GPA of 3.70 or better according to the following scale:

summa cum laude	3.90-4.00
magna cum laude	3.80-3.89
cum laude	3.70-3.79

SCHOLASTIC HONORS

Dean's List Award

The Dean's List Award is a scholastic honor given each semester to those full-time students who have earned a GPA of 3.50 to 3.89 during the previous semester.

President's List Award

The President's List Award is a scholastic honor given each semester to those full-time students who have earned a GPA of 3.90 or better during the previous semester.

These awards are presented in Chapel early in the semester subsequent to the term when the achievement was made.

ACADEMIC PROGRESS AND PROBATION

Each student must demonstrate through his scholastic record that he is making satisfactory academic progress toward his degree in order to avoid academic probation and remain eligible for financial aid. At the end of every semester each student's progress is reviewed and specific decisions are made concerning continued enrollment. The minimum standard for academic progress for all students, including those transferring from other institutions, is shown below.

Semester hours attempted in college	Required cumulative GPA
1-15	1.75
16-29	1.85
30-44	1.95
45 and above	2.00

A student whose term and cumulative GPA is below the minimum standard indicated above will be placed on academic probation for the following semester. During this semester, the student's academic load should be lowered to accommodate additional study. Participation in intercollegiate sports and the Student Council is not permitted during this probationary period, and resident students are required to attend nightly study sessions in the College library.

At the end of probation, the student's academic status is reviewed. If the student fails to achieve the required term and cumulative GPA standard at the end of the probationary term, he will be placed on academic suspension and will not be permitted to enroll for a period of one academic term (not to include summer sessions). If the student's term GPA is above the required minimum but the cumulative GPA is below the required minimum, the student is considered to be making progress and will be given one additional semester of probationary enrollment in order to raise his cumulative average. Students who are on academic probation for two consecutive terms of study at CCC will be suspended and will not be permitted to enroll for a period of one academic term. After that time, the student may request permission from the Registrar to return. A minimum GPA of 2.00 will be required each semester in order to continue. Any student dismissed twice because of unsatisfactory progress may not re-enroll for one academic year and then only after obtaining permission from the Admissions Committee of the College.

STUDENT CLASSIFICATION

Classification for degree-seeking students is based on the following chart of semester hours earned:

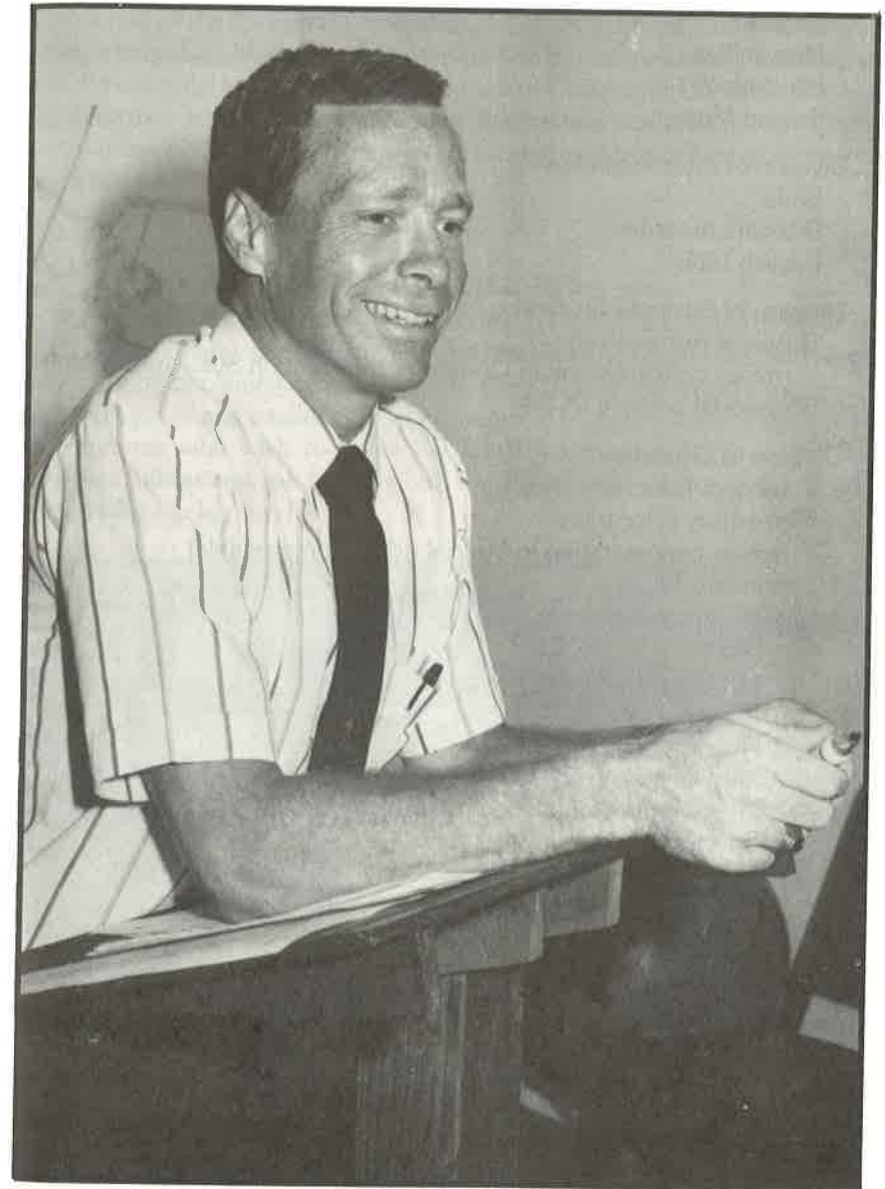
Class	Semester Hours
Freshman	0-25
Sophomore	26-57
Junior	58-89
Senior	90 and above

Non-degree and special student individuals are classified as non-degree seeking students.



"The fear of the Lord is the beginning of wisdom: and the knowledge of the holy is understanding."

Proverbs 9:10



CLEARWATER CHRISTIAN COLLEGE ACADEMIC DIVISIONS

Clearwater Christian College offers two major areas of study leading to the Associate of Science (A.S.) degree and eleven major areas of study leading to either the Bachelor of Science or Bachelor of Arts degree. These majors are grouped in four Academic Divisions as listed below:

- I. Division of Arts and Science
 - English
 - Humanities
 - Psychology
 - Sacred Music
- II. Division of Biblical Studies
 - Bible
 - Biblical Literature
 - English Bible
- III. Division of Business Studies
 - Business Administration
(minor concentration in Computer Information Systems available)
 - Secretarial Science (A.S.)
- IV. Division of Education
 - Preschool Education (A.S.)
 - Elementary Education
(minor concentration in Special Education available)
 - Secondary Education
proficiencies available in:
 - Bible
 - Business
 - English
 - History
 - Mathematics
 - Physical Education
 - Social Studies
 - Music Education

DIVISION OF ARTS AND SCIENCE

Dr. J. Macfarlane, Chairman
 Mrs. D. Hamby, Mrs. C. Ladner, Miss J. Anderson,
 Mrs. P. Oswald, Mrs. E. Werner, Mr. J. Steele,
 Dr. J. Morris, Dr. D. Steele

The Division of Arts and Science consists of majors in English, Humanities, Psychology and Sacred Music. The courses offered by this division form the foundation of the liberal arts education. Courses in English, literature, speech, foreign language, history, and music are the humanities in the classical sense and are essential to the liberal arts program of Clearwater Christian College. To fulfill the foreign language requirement, instruction is offered at the elementary and intermediate levels of Spanish and German with attention given to culture and literature.

ENGLISH

The major in English seeks to develop in the student the ability to think, write, and speak clearly and effectively and to understand, enjoy, and evaluate literature by becoming acquainted with the works of the world's major writers and their social and intellectual backgrounds. This major is especially profitable for students who wish to enter the Christian ministry, or become English teachers, librarians, or lawyers, or for those who desire it for a general humanities background.



BACHELOR OF ARTS IN ENGLISH

	Semester	
	I	II
	Credits	
FRESHMAN		
Bible Survey—O.T., BI 101, 102	3	3
English Composition, EN 101, 102	3	3
History of Western Civilization, HY 221, 222	3	3
College Mathematics, MS 101, 102	3	3
Physical Education, PE 101-108	1	1
Fine Arts Elective	3	
Freshman Orientation, GS 101/Speech SP 162	1	3
	17	16
SOPHOMORE		
American Literature Survey, LIT 211, 212	3	3
Intro. to Philosophy, PHI 201/Research Methods, LS 201	3	3
Bible Elective/Bible Survey—N.T., BI 103	3	3
Advanced Composition, EN 201/Gen. Psychology, PSY 271	3	3
United States or British History, HY 202 or 311		3
General Biology, SCI 101/Modern Rel. Issues, CE 106	4	2
	16	17
JUNIOR		
English Literature Survey, LIT 221, 222	3	3
*Intermediate Foreign Language	3	3
Advanced Grammar, EN 321/Creative Writing, EN 304	3	3
Literature Electives	3	3
Communications Elective/Shakespeare, LIT 332	3	3
	15	15
SENIOR		
Basic Bible Doctrines, BI 411, 412	3	3
Contemporary Literature, LIT 441/Milton, LIT 334	3	3
Literary Criticism, LIT 490/Chaucer, LIT 431	3	3
Literature Elective/Oral Interpretation, SP 301	3	3
Social Science Elective/General Elective	3	4
Senior Seminar, GS 401	1	
	16	16

*If the student does not achieve a satisfactory score on the language placement test, six credit hours of an elementary language must be added to this program.

HUMANITIES

Clearwater Christian College offers a Bachelor of Arts degree in the Humanities which includes study in the traditional liberal arts disciplines of history, literature, philosophy, Bible, fine arts, and rhetoric (speech). Our program satisfies the student whose interest is to pursue a major which does not include a special concentration in any one of these areas. Whether or not this program is followed up with an advanced degree in a specialized field of study, the major in Humanities is preparatory for many directions in life.

BACHELOR OF ARTS IN HUMANITIES

	Semester	
	I	II
	Credits	
FRESHMAN		
English Composition, EN 101, 102	3	3
Bible Survey—Old Testament, BI 101, 102	3	3
College Math, MS 101, 102	3	3
Physical Education, PE 101-108.	1	1
History Survey, HY 201, 202, 211 or 212.	3	3
Music Appreciation, MU 103/Fundamentals of Speech, SP 162	3	3
Freshman Orientation, GS 101	1	
	17	16
SOPHOMORE		
Literature Survey, LIT 211, 212, 221, or 222	3	3
Bible Survey—New Testament, BI 103/Intro to Computers, CS 100 . . .	3	3
Modern Religious Issues, CE 106/Intro to Fine Arts, FA 201	2	3
Economic Concepts, ECO 203/General Sociology, SY 261	3	3
General Biology, SCI 101/Physical Science Survey, SCI 102	4	4
Intro to Philosophy, PHI 201	3	
	18	16
JUNIOR		
*Intermediate Foreign Language	3	3
Bible Elective/General Psychology, PSY 271	3	3
Shakespeare, LIT 332/Creative Writing, EN 304	3	3
General Elective/Oral Interpretation, SP 301	4	3
American Government, POS 205/Research Methods, LS 201	3	3
	16	15
SENIOR		
Bible Doctrines, BI 411, 412	3	3
History Electives	3	3
Directed Study in Humanities, HU 491/Literature Elective	3	3
Bible Elective/Contemporary Philosophy, PHI 302	3	3
General Electives	2	2
Senior Seminar, GS 401.	1	
	15	15

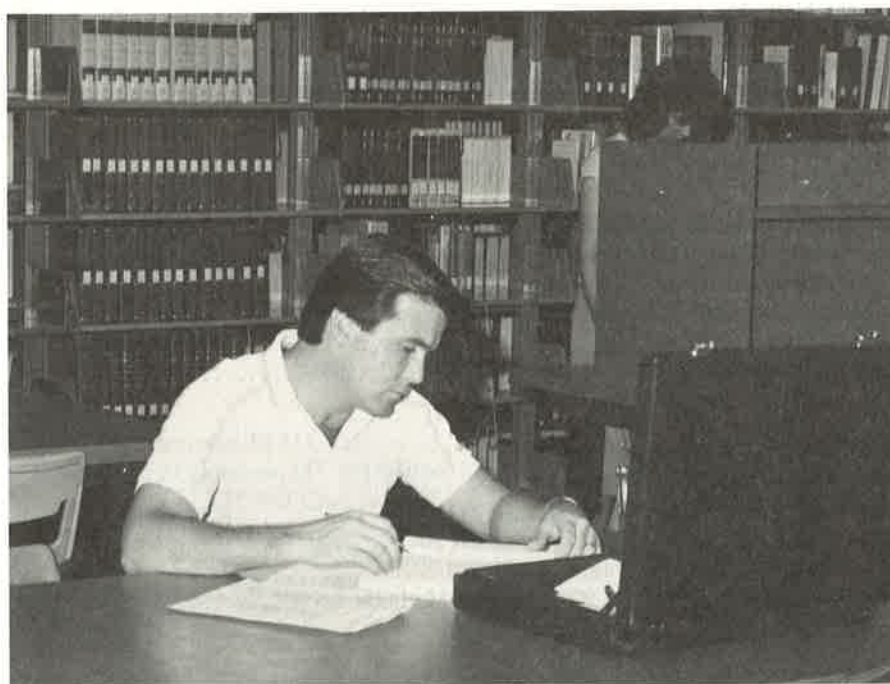
All electives in Junior-Senior year must be 300-400 level.

*If the student does not achieve a satisfactory score on the language placement test, six credit hours of an elementary language must be added to this program.

PSYCHOLOGY

The Psychology program has been designed to achieve two main objectives. The first is to pursue the study of psychology within a Christian frame of reference. We believe that through scientific study psychology can help us better understand those around us. We also believe that some of the objective data and theories from psychology can help the church more effectively minister to the overall needs of its members.

Our second objective is to provide those students who choose to pursue graduate studies and a higher degree with a broad and sound foundation in Psychology. Students called to both local or foreign ministries will find psychology courses valuable in many situations. Since most ministers and teachers have many opportunities for counseling on some level, several psychology courses are designed specifically to provide needed skills.



BACHELOR OF ARTS IN PSYCHOLOGY

	Semester	
	I	II
	Credits	
FRESHMAN		
Bible Survey—O.T., BI 101, 102	3	3
English Composition, EN 101, 102	3	3
College Mathematics, MS 101, 102	3	3
Physical Education, PE 101-108	1	1
Communications Elective/Bible Survey—N.T., BI 103	3	3
General Elective	2	
Freshman Orientation, GS 101/Gen. Biology, SCI 101	1	4
	16	17
SOPHOMORE		
Literature Survey, LIT 211, 212, 221, or 222	3	3
History Survey, HY 201, 202, 221, or 222	3	3
*Intermediate Foreign Language	3	3
Gen. Psychology, PSY 271/Bible Elective	3	3
Intro. to Philosophy, PHI 201/Speech, SP 162	3	3
Modern Religious Issues, CE 106		2
	15	17
JUNIOR		
Personality Theory, PSY 322/Abnormal Psych, PSY 328	3	3
Experimental Psychology, PSY 305	3	
Introduction to Clinical & Counseling Psych., PSY 325		3
Introduction to Exceptional Children, SED 200	3	
Fine Arts Elective/Psychological Testing, PSY 311	3	3
Marriage & the Family, PSY 337/General Elective	3	3
Human Growth & Dev. I, II, PSY 283, 301	3	3
	18	15
SENIOR		
Basic Bible Doctrines, BI 411, 412	3	3
Counseling Through the Scriptures, PSY 426	3	
Techniques of Christian Counseling, PSY 475		3
Theories & Systems of Psychology, PSY 454	3	
Social Science Elective/Social Psychology, PSY 425	3	3
General Electives	2	3
Senior Seminar, GS 401/Psychology Seminar, PSY 491	1	3
	15	15

*If the student does not achieve a satisfactory score on the language placement test, six credit hours of an elementary language must be added to this program.

SACRED MUSIC

The major in Sacred Music offers a study designed to prepare students for professional work in the church or the school and to give proper background to those graduates who seek further preparation in graduate institutions. If a Bachelor of Science in Music Education is desired, a minimum of two additional semesters of training in education is required to complete the program. (Refer to major in Music Education for courses needed). The major in Sacred Music provides individual instruction in voice, piano, organ, or brass. This is a performance and theory major giving gifted musicians ample opportunity to express their God-given talents through College Choir and Chapel Singers concerts, chapel solos, and recitals.

It is the desire of the College that our music honor and glorify the Lord. Accordingly, our convictions prohibit use of rock music in any form on the campus.



BACHELOR OF ARTS IN SACRED MUSIC

	Semester	
	I	II
	Credits	
FRESHMAN		
Bible Survey—Old Testament, BI 101, 102	3	3
English Composition, EN 101, 102	3	3
College Mathematics, MS 101, 102	3	3
Physical Education Activity, PE 101-108	1	1
Music Theory, MU 123, 124	3	3
Applied Music (Principal), MU 121, 122	2	2
Applied Music (Secondary), MU 111, 112	1	1
Freshman Orientation, GS 101	1	
College Choir, MU 160	1	1
	<u>18</u>	<u>17</u>
SOPHOMORE		
Literature Survey, LIT 211, 212, 221, or 222	3	3
History Survey, HY 201, 202, 221, or 222	3	3
Music History, MY 213, 214	2	2
Music Theory, MU 223, 224	3	3
Applied Music (Principal), MU 221, 222	2	2
Applied Music (Secondary), MU 211, 212	1	1
Intro. to Philos., PHI 201/Mod. Relig. Issues, CE 106	3	2
College Choir, MU 160	1	1
	<u>18</u>	<u>17</u>
JUNIOR		
Foreign Language	3	3
Form & Analysis, MU 323/Orchest. & Arranging, MU 324	3	3
Applied Music (Principal), MU 321, 322	2	2
Music Elective, MU 332, 334, or 354/Conducting, MU 352	2	3
General Biology, SCI 101/Bible Surv.—N.T., BI 103	4	3
Hymnology, MU 364	3	
Church Music Administration, MU 356		2
College Choir, MU 160, or other ensemble	1	1
Junior Recital		0
	<u>17</u>	<u>17</u>
SENIOR		
Basic Bible Doctrines, BI 411, 412	3	3
Counseling Through the Scriptures, PSY 426	3	
Applied Music (Principal), MU 421, 422	2	2
Social Science Elective/Speech, SP 162	3	3
Second Foreign Language	3	3
Counterpoint, MU 423		3
Senior Seminar, GS 401/Senior Recital	1	0
College Choir, MU 160, or other ensemble	1	1
	<u>16</u>	<u>15</u>

*Final Piano Proficiency Examination required.

DIVISION OF BIBLICAL STUDIES

Chairman
Norman Spotts, Dean Emeritus
Dr. W. Pardee, Dr. E. Oliver, Mr. R. Carver

The Division of Biblical Studies offers majors in Bible, Biblical Literature, and English Bible. Each of these majors is designed to equip an individual with a thorough knowledge of God's Word and various related subjects including Ancient and Church History, Philosophy, and Theology, Comparative Religions, and Cults.

The major in Bible requires two years of Greek, and includes an emphasis on studies in the English Bible. This major is designed as preparation for seminary studies but has value as a terminal degree for some Christian ministries.

The major in Biblical Literature requires three years of Greek Studies with the third year composed of text studies in New Testament books. One semester of Elementary Hebrew is required and an optional second semester is offered. This program serves the student who desires a greater proficiency in N. T. Greek on the undergraduate level. The Biblical Literature major has proven to be excellent pre-seminary preparation.

The major in English Bible replaces the two years of Greek studies with 12 hours of in-depth study of English Bible courses elected by the student himself. The major is designed for the student who does not desire to take Greek but still obtain a well-rounded Bible education. It can be a terminal degree for some Christian ministries.

Recommended electives for all Bible majors are: Counseling Through The Scriptures, Techniques of Christian Counseling, and Pastoral Epistles.



BACHELOR OF ARTS IN BIBLE

	Semester I	Semester II
	Credits	Credits
FRESHMAN		
Bible Survey—Old Testament, BI 101, 102	3	3
English Composition, EN 101, 102	3	3
Physical Education Activity, PE 101-108.	1	1
College Mathematics, I and II, MS 101, 102	3	3
Freshman Orientation, GS 101.	1	
Modern Religious Issues, CE 106		2
Survey of Christian Education, CE 111/Speech, SP 162.	3	3
Social Science Elective/General Psychology, PSY 271	3	3
	17	18
SOPHOMORE		
Literature Survey, LIT 211, 212, 221, or 222	3	3
History Survey, HY 201, 202, 221, or 222	3	3
Elementary Greek, LA 101, 102	3	3
General Elective/Bible Survey—N.T., BI 103	2	3
Life of Christ, BI 201 or John's Gospel, BI 250.	3	
Gen. Biology or Phys. Science Sur., SCI 101 or 102		4
	14	16
JUNIOR		
Intermediate Greek, LA 201, 202	3	3
Ancient History, HY 301, 302	3	3
Biblical Introduction, BI 301, 302	3	3
Comparative Religions, BI 307/Cults, BI 308	3	3
Introduction to Philosophy, PHI 201/Isaiah, BI 365	3	3
	15	15
SENIOR		
Basic Bible Doctrines, BI 411, 412	3	3
Practical Ministerial Training, CE 391, 392	1	1
Church History, HY 401, 402	3	3
Romans, BI 352/Intertestament Period, BI 370.	3	3
Bible Electives	6	6
Senior Seminar, GS 401.	1	
	17	16

Recommended Electives:

Counseling Through the Scriptures, PSY 426
Techniques of Christian Counseling, PSY 475
Pastoral Epistles, BI 259

BACHELOR OF ARTS IN BIBLICAL LITERATURE

	Semester I	Semester II
	Credits	Credits
FRESHMAN		
Bible Survey—Old Testament, BI 101, 102	3	3
English Composition, EN 101, 102	3	3
Physical Education, PE 101-108	1	1
College Mathematics I & II, MS 101, 102	3	3
Freshman Orientation, GS 101	1	
Modern Religious Issues, CE 106		2
Survey of Christian Education, CE 111/Speech, SP 162	3	3
Social Science Elective/General Psychology, PSY 271	3	3
	17	18
SOPHOMORE		
Literature Survey, LIT 211, 212, 221, or 222	3	3
History Survey, HY 201, 202, 221, or 222	3	3
Elementary Greek, LA 101, 102	3	3
General Elective/Bible Survey—N.T., BI 103	2	3
Life of Christ, BI 201 or John's Gospel, BI 250	3	
General Biology or Phys. Science Sur., SCI 101 or 102		4
	14	16
JUNIOR		
Intermediate Greek, LA 201, 202	3	3
Ancient History, HY 301, 302	3	3
Biblical Introduction, BI 301, 302	3	3
Comparative Religions, BI 307/Cults, BI 308	3	3
Introduction to Philosophy, PHI 201	3	
Intertestament Period, BI 370		3
Practical Ministerial Training, CE 391, 392	1	1
	16	16
SENIOR		
Basic Bible Doctrines, BI 411, 412	3	3
Church History, HY 401, 402	3	3
Romans, BI 352/Bible Elective	3	3
Greek Text Studies, LA 311, 312	3	3
Elementary Hebrew, LA 103/Bible Elective	3	3
Senior Seminar, GS 401	1	
	16	15

Recommended Electives:

Counseling Through the Scriptures, PSY 426
Techniques of Christian Counseling, PSY 475
Pastoral Epistles, BI 259

BACHELOR OF SCIENCE IN ENGLISH BIBLE

	Semester I	Semester II
	Credits	Credits
FRESHMAN		
Bible Survey—Old Testament, BI 101, 102	3	3
English Composition, EN 101, 102	3	3
Physical Education Activity, PE 101-108	1	
Mathematics MS 101, 102	3	3
Freshman Orientation, GS 101	1	
Modern Religious Issues, CE 106		2
Survey of Christian Education CE 111/Speech, SP 162	3	3
Social Science Elective/Gen. Psychology, PSY 271	3	3
	17	18
SOPHOMORE		
Literature Survey, LIT 211, 212, 221, or 222	3	3
History Survey, HY 201, 202, 221, or 222	3	3
Bible Electives	3	3
General Elective/Bible Survey—N.T., BI 103	2	3
Life of Christ, BI 201 or John's Gospel, BI 250	3	
Gen. Biology or Phys. Science Survey, SCI 101 or 102		4
	14	16
JUNIOR		
Bible Elective/Counseling Elective	3	3
Ancient History, HY 301, 302	3	3
Biblical Introduction, BI 301, 302	3	3
Comparative Religions, BI 307/Cults, BI 308	3	3
Introduction to Philosophy, PHI 201/Isaiah, BI 365	3	3
	15	15
SENIOR		
Basic Bible Doctrines, BI 411, 412	3	3
Practical Ministerial Training, CE 391, 392	1	1
Church History, HY 401, 402	3	3
Romans, BI 352/Intertestament Period, BI 370	3	3
Bible Electives	6	6
Senior Seminar, GS 401	1	
	17	16

Recommended Electives:

Counseling Through the Scriptures, PSY 425
Techniques of Christian Counseling, PSY 475

DIVISION OF BUSINESS STUDIES

Dr. O. M. Wellman, Chairman
Mr. A. Bowman, Mr. F. Snyder
Mr. P. Traversa, Mrs. P. Youstra

The Division of Business Studies consists of B.S. Degrees in Business Administration, Business Administration with an optional minor concentration in Computer Information Science and the A.S. degree in Secretarial Science.

The Computer Information Science minor is to be taken concurrently with the Business Administration program. This program follows very closely to the Data Processing Management Association recommended model.

These programs are structured to produce graduates who are well-grounded in their chosen profession and in their Christian faith. A primary objective of the College is that these graduates will make a positive contribution through their careers that will glorify the Lord Jesus Christ. Students are instructed in the virtues of the free-enterprise system as opposed to alternative economic theories and systems.



BACHELOR OF SCIENCE IN BUSINESS ADMINISTRATION

	Semester I	Semester II
	Credits	Credits
FRESHMAN		
Bible Survey—Old Testament, BI 101, 102	3	3
English Composition, EN 101, 102	3	3
College Mathematics, MS 101, 102	3	3
Principles of Management, BU 101	3	
Small Business Management, BU 103		3
Physical Education Activity, PE 101-108	1	1
Freshman Orientation, GS 101	1	
Bible Survey—N.T., BI 103/General Biology, SCI 101	3	4
	17	17
SOPHOMORE		
Literature Survey, LIT 211, 212, 221, or 222	3	3
History Survey, HY 201, 202, 221, or 222	3	3
Principles of Accounting, BU 201, 202	3	3
Principles of Economics, ECO 201, 202	3	3
Modern Religious Issues, CE 106	2	
College Algebra, MS 201/Business Communications, BU 203	3	3
	17	15
JUNIOR		
Business Law, BU 303	3	
Money, Banking, & Financial Institutions, BU 300		3
Introduction to Computers, CS 100	3	
Application Programming, CS 201		3
Statistics, MS 311/General Psychology, PSY 271	3	3
Cost Accounting, BU 305/Social Science Elective	3	3
General Elective/Speech, SP 162	4	3
	16	15
SENIOR		
Basic Bible Doctrines, BI 411, 412	3	3
Corporate Finance, BU 401/Taxation, BU 402	3	3
Principles of Marketing, BU 403	3	
General Electives	3	3
Bible Elective/Labor & Management Relations, BU 404	3	3
Senior Seminar, GS 401/Business Policy, BU 421	1	3
	16	15

BACHELOR OF SCIENCE IN BUSINESS ADMINISTRATION

Minor Concentration in Computer Information Science

	Semester	
	I	II
	Credits	
FRESHMAN		
Bible Survey—Old Testament, BI 101, 102	3	3
English Composition, EN 101, 102	3	3
College Mathematics, MS 101, 102	3	3
Principles of Management, BU 101/Small Bus. Management, BU 103 ..	3	3
Physical Education Activity, PE 101-108	1	1
Freshman Orientation, GS 101	1	
General Biology, SCI 101/Bible Survey—N.T., BI 103	4	3
	18	16
SOPHOMORE		
Literature Survey, LIT 211, 212, 221, or 222	3	3
History Survey, HY 201, 202, 221, or 222	3	3
Principles of Accounting, BU 201, 202	3	3
Principles of Economics, ECO 201, 202	3	3
Introduction to Computers, CS 100	3	
Application Programming, CS 201		3
College Algebra, MS 201/Modern Religious Issues, CE 106	3	2
	18	17
JUNIOR		
Business Law, BU 303	3	
Money, Banking, & Financial Institutions, BU 300		3
General Psychology, PSY 271/Speech, SP 162	3	3
Statistics, MS 311/Business Communications, BU 203	3	3
Cost Accounting, BU 305/Social Science Elective	3	3
Advanced Micro Computer Applications, CS 250 (SEC 221)		3
Data Base Design Concepts, CS 300	3	
	15	15
SENIOR		
Basic Bible Doctrines, BI 411, 412	3	3
Corporate Finance, BU 401, Taxation, BU 402	3	3
Principles of Marketing, BU 403	3	
Systems Analysis Methods, CS 306	3	
Directed Study in Applied System Development, CS 410		3
Bible Elective/Labor & Management Relations, BU 404	3	3
Senior Seminar, GS 401/Business Policy, BU 421	1	3
	16	15

ASSOCIATE OF SCIENCE IN SECRETARIAL SCIENCE

Secretarial Science affords opportunity for trained secretaries to serve in Christian service areas such as churches, schools, and mission boards, and also to exert a positive influence in the business world. Graduates from the Secretarial Science major have demonstrated the Christian character, skill, and knowledge necessary to serve in the business world. Training includes preparation in the medical, legal, and business aspects of the secretarial field.

	Semester	
	I	II
	Credits	
FIRST YEAR		
English Composition, EN 101, 102	3	3
Bible Survey, Old Testament, BI 101	3	
Bible Survey, Old Testament, BI 102 or New Testament, BI 103		3
Secretarial Procedures, SEC 101		3
Introductory Typing, SEC 107/Intermediate Typing, SEC 108	3	3
Introductory Shorthand, SEC 110	3	
Intermediate Shorthand, SEC 111		3
Introduction to Computers, CS 100/College Mathematics, MS 101	3	3
Freshman Orientation, GS 101	1	
	16	18
SECOND YEAR		
Basic Bible Doctrines, BI 411, 412	3	3
Economic Concepts, ECO 203/Business Communications, BU 203 ...	3	3
Principles of Accounting, BU 201	3	
Modern Religious Issues, CE 106		2
Advanced Typing, SEC 207/Transcription, SEC 208	3	3
Advanced Shorthand, SEC 210	3	
Career Planning, GS 201	0	
Advanced Micro Computer Applications, SEC 221 (CS 250)		3
Business Law, BU 303	3	
	18	14



DIVISION OF EDUCATION

Dr. W. Hatten, Chairman
Miss B. Burke, Miss E. Knepper, Mr. B. Johnson
Mr. E. Larson, Mr. D. Wubbena, Dr. G. Youstra

The Division of Education consists of majors in Pre-school Education, Elementary Education (minor available in Special Education), Secondary Education (proficiencies in Bible, Business, English, History, Mathematics, Physical Education and Social Studies), and Music Education.

The rapid growth of the Christian school movement in the United States has created a critical need for trained professional educators with a love for children and a love for God. Clearwater Christian College graduates are helping to fill this need each year.

A CHRISTIAN PHILOSOPHY OF EDUCATION

Clearwater Christian College stands firmly, without apology, upon the infallible and inerrant Word of God as the basis of true education. The Division of Education instills within students a Christian philosophy of education which provides a Christian world view and a strategy of teaching based upon Biblical principles. Education is not a neutral discipline, and each individual's approach to education reflects their philosophy and training.

The model for all Christian educators is the example of the Lord Jesus Christ—the Master Teacher. Every teaching method is carefully studied to determine if it is consistent with God's Word and the Christian philosophy of education.

Graduates of this Division will be prepared to serve Christ in Christian and public schools. Each student is taught that the Christian teacher must be a positive Christian role model and must reject humanistic approaches which conflict with Biblical principles.

CERTIFICATION

Teacher education programs offered at Clearwater Christian College are designed to meet the certification requirements for the American Association of Christian Schools, Association of Christian Schools International, the Florida Association of Christian Colleges and Schools and the State of Florida Department of Education. Requirements of Chapter 6A-5 are adhered to in strict compliance with current rules. These rules are subject to change at short notice so applicants should consult with education department faculty for the latest requirements. To be eligible for teacher certification in Florida, students must complete the Beginning Teacher Program in participating schools and all sections of the Florida Teacher Certification Examination.

STUDENT TEACHING

During the student teaching semester, not more than twelve (12) semester hours may be taken. This includes off-campus and/or independent studies. It is also suggested that the student teacher curtail their off campus employment during the ten (10) week student teaching internship.

ASSOCIATE OF SCIENCE IN PRESCHOOL EDUCATION

FIRST YEAR

	Semester I	Semester II
	Credits	Credits
Bible Survey—Old Testament, BI 101	3	
Bible Survey—Old Testament, BI 102 or N.T., BI 103		3
English Composition, EN 101, 201	3	3
Intro. to Education, ED 101/Philos. of Education, Ed 201	2	2
Cognitive Experiences in the Preschool, PED 130	2	
Creative Experiences in the Preschool, PED 131		2
Freshman Orientation, GS 101/College Math., MS 101	1	3
Teacher Aide Observation, PED 132	2	
General Psychology, PSY 271		3
Methods of Teaching Elementary Music, ED 313	3	
Modern Religious Issues, CE 106		2
	16	18

SECOND YEAR

Basic Bible Doctrines, BI 411, 412	3	3
Human Growth & Development, PSY 283	3	
Materials & Methods of Education, ED 204	3	
Curriculum & Instruction for Elementary Schools, ED 202	2	
Children's Literature, ED 310		3
Teaching Reading in the School, ED 312		3
Methods of Teaching Elementary Physical Education, ED 317		2
Senior Seminar, GS 401/Student Teaching, PED 200	1	4
General Elective	3	
	15	15



BACHELOR OF SCIENCE IN ELEMENTARY EDUCATION

	Semester	
	I	II
	Credits	
FRESHMAN		
Bible Survey, Old Testament, BI 101, 102	3	3
English Composition EN 101, 102	3	3
College Mathematics, MS 101, 102	3	3
Physical Education, PE 101-108	1	1
History Survey, HY 201, 202, 221 or 222	3	3
Intro. to Education, ED 101/Phil. of Education ED 201	2	2
Freshman Orientation, GS 101/Speech SP 162	<u>1</u>	<u>3</u>
	16	18
SOPHOMORE		
Literature Survey, LIT 211, 212, 221 or 222	3	3
General Psychology, PSY 271/General Biology, SCI 101	3	4
Curriculum and Inst. for Elem. Schools, ED 202	3	
Bible Survey, N.T., BI 103		3
Teacher Aide Observation, ED 203	2	
Modern Religious Issues, CE 106		2
Intro. to Exceptional Children, SED 200	3	
Social Studies Elective		3
Fine Arts elec./Meth. of Teaching Art, ED 320	<u>3</u>	<u>2</u>
	17	17
JUNIOR		
Basic Bible Doctrines, BI 411, 412	3	3
Methods of Teaching Elem. Music, ED 313	3	
Methods of Teaching Elem. Social Studies, ED 315		2
Materials and Methods of Education, ED 204	3	
Methods of Teaching Elem. Science, ED 318		2
Human Growth & Dev., PSY 283/Communications Elective	3	3
Health Education, ED 311/Children's Lit., ED 310	2	3
Bible Elective/Methods of Teaching Elem. P.E., ED 317	3	2
Teaching Reading in the School, ED 312		<u>3</u>
	17	18
SENIOR		
Methods of Teaching Elem. Language Arts, ED 314	2	
Methods of Teaching Elem. Mathematics, ED 316	2	
Methods of Teaching Elem. Bible, ED 319	2	
Tests and Measurements, ED 404	2	
Senior Seminar, GS 401/Education Seminar ED 491	1	1
Administration and Supervision, ED 402		2
General Electives/Student Teaching, ED 450	<u>5</u>	<u>8</u>
	14	11

BACHELOR OF SCIENCE IN ELEMENTARY EDUCATION

Minor: Special Education

Elementary Education majors may obtain a teaching minor in Special Education which satisfies state certification requirements. Students who receive this minor specialize in Learning Disabilities or Mental Retardation.

Requirements for the Special Education minor beyond those for the major in Elementary Education are noted below. SED 200, Introduction to Exceptional Children is required for the Elementary Education major and is a foundational pre-requisite to all other special education courses.

		Semester Hours
Courses for Learning Disabilities Specialization:		
SED 330	Theories of Learning Disabilities	3
SED 340	Diagnosis of the Learning Disabled	3
SED 341	Individualized Instruction & Classroom Management for the Learning Disabled	3
Courses for the Mental Retardation Specialization:		
SED 300	Introduction to Mental Retardation	3
SED 320	Curriculum & Methods for the Trainable Mentally Retarded	3
SED 321	Curriculum & Methods for the Educable Mentally Retarded	3
Courses required for all Special Education minors:		
SED 210	Language Development & Speech Disabilities	3
SED 350	Student Practicum in Special Education	3
SED 410	Educational Testing for Exceptional Children	3
PE 361	Methods of Teaching Adaptive Physical Ed	3
Total for either Specialization option:		21

BACHELOR OF SCIENCE IN SECONDARY EDUCATION

Students who wish to pursue the rewarding field of education may wish to select one of the seven categories of proficiencies offered by Clearwater Christian College in secondary education. The state of Florida offers certification for grades 6-12 in many subject areas including those available at Clearwater: Bible, Business, English, History, Mathematics, Physical Education, and Social Studies. These programs include 23-26 semester hours of professional education credit as well as 24-39 semester hours in the subject area of certification. The complete programs of study are laid out in the following pages.

BACHELOR OF SCIENCE IN SECONDARY EDUCATION

Proficiency: Bible

	Semester I	Semester II
	Credits	Credits
FRESHMAN		
Bible Survey—Old Testament, BI 101, 102	3	3
English Composition, EN 101, 102	3	3
College Mathematics, MS 101, 102	3	3
Freshman Orientation, GS 101/Speech, SP 162	1	3
Physical Education Activity, PE 101-108	1	1
Intro. to Education, ED 101/Philosophy of Education, ED 201	2	2
History Survey, HY 201, 202 or HY 221, 222	3	3
	16	18
SOPHOMORE		
Literature Survey, LIT 211, 212 or LIT 221, 222	3	3
Materials and Methods of Education, ED 204	3	
General Psychology, PSY 271		3
Modern Religious Issues, CE 106		2
General Biology, SCI 101/Fine Arts Elective	4	3
Survey of Christian Education, CE 111	3	
Bible Survey—New Testament, BI 103		3
Ancient History, HY 301, 302	3	3
	16	17
JUNIOR		
Basic Bible Doctrines, BI 411, 412	3	3
Church History, HY 401, 402	3	3
Biblical Introduction, BI 301, 302	3	3
Comparative Religions, BI 307/Cults, BI 308	3	3
Communications Elective/Curriculum & Instruction, ED 303	3	3
General Sociology, SY 261/Bible Elective	3	3
	18	18
SENIOR		
Human Growth & Development, PSY 283	3	
Methods of Teaching Secondary Bible, ED 329	3	
Introduction to Philosophy, PHY 201	3	
Tests & Measurement, ED 404	2	
Senior Seminar, GS 401/Education Seminar, ED 491	1	1
Administration and Supervision for Teachers, ED 402		2
Romans, BI 352/Student Teaching, ED 450	3	8
	15	11

BACHELOR OF SCIENCE IN SECONDARY EDUCATION

Proficiency: Business

	Semester	
	I	II
	Credits	
FRESHMAN		
Bible Survey—Old Testament, BI 101, 102	3	3
English Composition, EN 101, 102	3	3
College Mathematics, MS 101, 102	3	3
Physical Education Activity, PE 101-108	1	
Introduction to Education, ED 101/Philosophy of Education, ED 201 ..	2	2
Introductory Typing, SEC 107/Intermediate Typing, SEC 108	3	3
Freshman Orientation, GS 101	1	
Speech, SP 162		3
	16	17
SOPHOMORE		
Literature Survey, LIT 211, 212, 221, or 222	3	3
History Survey, HY 201, 202, 221, or 222	3	3
Beginning Shorthand, SEC 110/Intermediate Shorthand, SEC 111	3	3
Fine Arts Elective/General Psychology, PSY 271	3	3
Advanced Typing, SEC 207/Bible Survey—N.T., BI 103	3	3
Materials and Methods of Education, ED 204	3	
Modern Religious Issues, CE 106		2
Physical Education Activity, PE 101-108		1
	18	18
JUNIOR		
Basic Bible Doctrines, BI 411, 412	3	3
Principles of Accounting, BU 201, 202	3	3
Advanced Shorthand, SEC 210	3	
Advanced Micro Computer Applications, SEC 221 (CS 250)		3
College Algebra, MS 201/Curriculum & Instruction, ED 303	3	3
Introduction to Computers, CS 100/ Business Communications, BU 203	3	3
Human Growth & Development, PSY 283	3	
Application Programming, CS 201		3
	18	18
SENIOR		
Methods of Teaching Secondary Business, ED 327	3	
Tests and Measurements, ED 404	2	
Business Law, BU 303	3	
Economics Concepts, ECO 203	3	
Senior Seminar, GS 401/Education Seminar, ED 491	1	1
Administration & Supervision for Teachers, ED 402		2
Bible Elective/Student Teaching, ED 450	3	8
	15	11

BACHELOR OF ARTS IN SECONDARY EDUCATION

Proficiency: English

	Semester	
	I	II
	Credits	
FRESHMAN		
Bible Survey — O.T., BI 101, 102	3	3
English Composition, EN 101, 102	3	3
College Mathematics, MS 101, 102	3	3
General Biology, SCI 101.....	4	
Physical Education Activity, PE 101-108	1	1
Communications Elective/Bible Survey—N.T., BI 103	3	3
Freshman Orientation, GS 101/Speech, SP 162	1	3
	18	16
SOPHOMORE		
Literature Survey, LIT 211, 212, 221, or 222	3	3
History Survey, HY 201, 202, 221, or 222	3	3
Introduction to Education, ED 101	2	
Philosophy of Education, ED 201		2
Adv. Composition, EN 201/Oral Interpretation, SP 301	3	3
Materials and Methods of Education, ED 204.....	3	
Creative Writing, EN 304.....		3
General Psych., PSY 271/Social Science Elective.....	3	3
	17	17
JUNIOR		
Basic Bible Doctrines, BI 411, 412	3	3
*Intermediate Foreign Language	3	3
Advanced Grammar, EN 321/Shakespeare, LIT 332	3	3
Literature Elective/Milton, LIT 334	3	3
Curriculum & Instruction, ED 303		3
Human Growth & Dev., PSY 283/Chaucer, LIT 431.....	3	3
Modern Religious Issues, CE 106	2	
	17	18
SENIOR		
Methods of Teaching Secondary English; ED 321	3	
Contemporary Literature, LIT 441.....	3	
Literary Criticism, LIT 490	3	
Tests & Measurements, ED 404.....	2	
Fine Arts Elective	3	
Senior Seminar, GS 401/Education Seminar, ED 491.....	1	1
Administration & Supervision for Teachers, ED 402.....		2
Bible Elective/Student Teaching, ED 450	3	8
	18	11

*If the student does not achieve a satisfactory score on the language placement test, six credit hours of an elementary language must be added to this program.

BACHELOR OF SCIENCE IN SECONDARY EDUCATION

Proficiency: History

	Semester	
	I	II
	Credits	
FRESHMAN		
Bible Survey—Old Testament, BI 101, 102	3	3
Composition, EN 101, 102	3	3
College Mathematics, MS 101, 102	3	3
Western Civilization, HY 221, 222	3	3
Introduction to Education, ED 101	2	
Philosophy of Education, ED 201		2
Physical Education, PE 101-108	1	1
Freshman Orientation, GS 101	1	
Bible Survey—New Testament, BI 103		3
	16	18
SOPHOMORE		
Literature Survey, LIT 211, 212, 221, or 222	3	3
U.S. History, HY 201, 202	3	3
General Psychology, PSY 271/Intro. to Fine Arts, FA 201	3	3
Modern Religious Issues, CE 106/American Government, POS 205 . . .	2	3
General Biology, SCI 101/Speech, SP 162	4	3
General Sociology, SY 261/History Elective	3	3
	18	18
JUNIOR		
Bible Doctrines, BI 411, 412	3	3
Ancient History, HY 301, 302	3	3
Economics Concepts, ECO 203/World Geography, GY 201, 202	3	3
Human Growth & Dev., PSY 283/Research Methods, LS 201	3	3
Materials & Methods of Education, ED 204	3	
Curriculum and Instruction—Secondary, ED 303		3
Methods of Teaching Secondary Social Studies	3	
	18	15
SENIOR		
Church History, HY 401	3	
Historiography, HY 491	3	
Senior Seminar, GS 401/Education Seminar, ED 491	1	1
Administration and Supervision for Teachers, ED 402		2
History Elective/Student Teaching, ED 450	3	8
Introduction to Computers, CS 100	3	
Tests and Measurements, ED 404	2	
Bible Elective	3	
	18	11

BACHELOR OF SCIENCE IN SECONDARY EDUCATION

Proficiency: Mathematics

	Semester	
	I	II
	Credits	
FRESHMAN		
Bible Survey—Old Testament, BI 101, 102	3	3
English Composition, EN 101, 102	3	3
Physical Education Activity, PE 101-108	1	1
*College Algebra, MS 201/College Trigonometry, MS 202	3	3
Social Science Elective/Fine Arts Elective	3	3
Introduction to Computers, CS 100/General Biology, SCI 101	3	4
Freshman Orientation, GS 101	1	
	17	17
SOPHOMORE		
Literature Survey, LIT 211, 212, 221, or 222	3	3
History Survey, HY 201, 202, 221, or 222	3	3
General Psychology, PSY 271/Modern Religious Issues, CE 106	3	2
Introduction to Education, ED 101	2	
Philosophy of Education, ED 201		2
Application Programming, CS 201/Pascal CS 210	3	3
Calculus, MS 211, 212	3	3
	17	16
JUNIOR		
Basic Bible Doctrines, BI 411, 412	3	3
Human Growth & Development, PSY 283	3	
Statistics, MS 311, 312	3	3
Linear Algebra, MS 401/Bible Elective	3	3
Materials & Methods of Education ED 204/Curriculum & Instruction, ED 303	3	3
Bible Survey—N.T. BI 103/Speech, SP 162	3	3
	18	15
SENIOR		
Differential Equations, MS 421	3	
Mathematics/Computer Elective	3	
Methods of Teaching Secondary Mathematics, ED 328	3	
Tests & Measurements, ED 328	2	
Senior Seminar, GS 401/Education Seminar, ED 491	1	1
Administration and Supervision for Teachers, ED 402		2
General Electives/Student Teaching, ED 450	2	8
Communication Elective	3	
	17	11

*Students with deficiencies in their high school mathematics background and/or those who score low on entrance tests will be required to take 6 additional semester hours in College Mathematics.

BACHELOR OF SCIENCE IN SECONDARY EDUCATION

Proficiency: Physical Education

	Semester	
	I	II
	Credits	
FRESHMAN		
Bible Survey—Old Testament, BI 101, 102	3	3
English Composition, EN 101, 102	3	3
Physical Education Activity, PE 101-108	1	1
College Mathematics, MS 101, 102	3	3
Principles of Physical Education, PE 151/First Aid, PE 121	2	1
General Biology, SCI 101/Fine Arts Elective	4	3
Freshman Orientation, GS 101/Fundamentals of Speech, SP 162	1	3
	17	17
SOPHOMORE		
Literature Survey, LIT 211, 212, 221 or 222	3	3
Anatomy and Physiology I & II, SCI 204, 205	4	4
History Survey, HY 201, 202, 221, or 222	3	3
General Psychology, PSY 271/Modern Religious Issues, CE 106	3	2
Teaching Team Sports, PE 201-204/Bible Survey N.T. BI 103	2	3
Intro. to Education, ED 101/Philosophy of Education, ED 201	2	2
	17	17
JUNIOR		
Basic Bible Doctrines, BI 411, 412	3	3
Theory & Practice in Coaching Sports, PE 311-314	2	2
Teaching Team Sports, PE 201-204	2	2
Teaching Nutrition, Conditioning and Fitness, PE 304	3	
Athletic Training, PE 381		2
Kinesiology, PE 378/Exercise Physiology, PE 478	3	3
Human Growth & Development, PSY 283	3	
Methods of Teaching Adaptive Physical Education, PE 361		3
Curriculum and Instruction for Secondary Education, ED 303		3
	16	18
SENIOR		
Methods of Teaching Secondary Physical Education, ED 324	3	
Organization & Administration of Physical Education, PE 472	3	
Health, SCI 311	2	
Tests & Measurements, ED 404	2	
Social Science Elective	3	
Senior Seminar, GS 401/Education Seminar, ED 491	1	1
Administration & Supervision for Teachers, ED 402		2
Bible Elective/Student Teaching, ED 450	3	8
	17	11

BACHELOR OF SCIENCE IN SECONDARY EDUCATION

Proficiency: Social Studies

	Semester	
	I	II
	Credits	
FRESHMAN		
Bible Survey—Old Testament, BI 101, 102	3	3
English Composition, EN 101, 102	3	3
College Mathematics, MS 101, 102	3	3
Physical Education Activity, PE 101-108	1	1
Freshman Orientation, GS 101	1	
Intro. to Education, ED 101/Philosophy of Education, ED 201	2	2
History of Western Civilization, HY 201, 202	3	3
Speech, SP 162		3
	16	18
SOPHOMORE		
Literature Survey, LIT 211, 212 or LIT 221, 222	3	3
U.S. History, HY 221, 222	3	3
Materials and Methods of Ed., ED 204/Gen. Psychology, PSY 271	3	3
Modern Religious Issues, CE 106/Curriculum & Instruction, ED 303	2	3
Communications Elective/Bible Survey N.T., BI 103	3	3
General Sociology, SY 261/American Government, POS 205	3	3
	17	18
JUNIOR		
Basic Bible Doctrines, BI 411, 412	3	3
World Geography, GY 201, 202	3	3
Human Growth and Development, PSY 283/History Elective	3	3
Economic Concepts, ECO 203/Origins of Socialism, Communism, HY 423	3	3
General Biology, SCI 101/Introduction to Fine Arts, FA 201	3	3
Methods of Teaching Secondary Social Studies, ED 323		3
	15	18
SENIOR		
Tests and Measurements, ED 404	2	
Bible Elective	3	
History Elective	3	
History Seminar, HY 491	3	
Senior Seminar, GS 401/Education Seminar, ED 491	1	1
Administration and Supervision for Teachers, ED 402		2
General Elective/Student Teaching, ED 450	3	8
	15	11

+BACHELOR OF SCIENCE IN MUSIC EDUCATION

	Semester	
	I	II
	Credits	
FRESHMAN		
Bible Survey—Old Testament, BI 101, 102	3	3
English Composition, EN 101, 102	3	3
College Mathematics, MS 101, 102	3	3
Physical Education, PE 101-108	1	1
Music Theory, MU 123, 124	3	3
Applied Music (Principal), MU 121, 122	2	2
Applied Music (Secondary), MU 111, 112	1	1
Freshman Orientation, GS 101/Speech, SP 162	1	3
College Choir, MU 160	1	1
	18	20
SOPHOMORE		
Literature Survey, LIT 211, 212, 221 or 222	3	3
History Survey, HY 201, 202, 221, or 222	3	3
Intro to Education, ED 101/Modern Religious Issues, CE 106	2	2
Music Theory, MU 223, 224	3	3
Applied Music (Principal), MU 221, 222	2	2
*Applied Music (Secondary), MU 211, 212	1	1
Social Science Elective/Bible Survey—New Testament, BI 103	3	3
College Choir, MU 160	1	1
General Psychology, PSY 271	3	
	21	18
JUNIOR		
Basic Bible Doctrines, BI 411, 412	3	3
Methods of Teaching Elementary Music, ED 313	3	
Methods of Teaching Secondary Music, ED 322		3
Music History, MU 213, 214	2	2
Conducting, MU 352		3
Applied Music (Principal), MU 321, 322	2	2
Brass Techniques, MU 241/Percussion Techniques, MU 242	1	1
Curriculum & Instruction, ED 202 or 303	3	
Human Growth & Development, PSY 283	3	
Philosophy of Education, ED 201		2
College Choir, MU 160, or other ensemble		
	18	19

SENIOR

(Continued on page 92)

SENIOR

Bible Elective	3	
Tests & Measurements, ED 404	2	
Communications Elective/Student Teaching, ED 450	3	8
Science Elective/Education Seminar, ED 491	4	1
Applied Music (Principal), MU 421	2	
Administration & Supervision for Teachers, ED 402		2
String Techniques, MU 243/Woodwind Techniques, MU 244	1	1
Senior Seminar, GS 401	1	
College Choir, MU 160, or other ensemble	1	
Recital	0	
	<hr/> 17	<hr/> 12

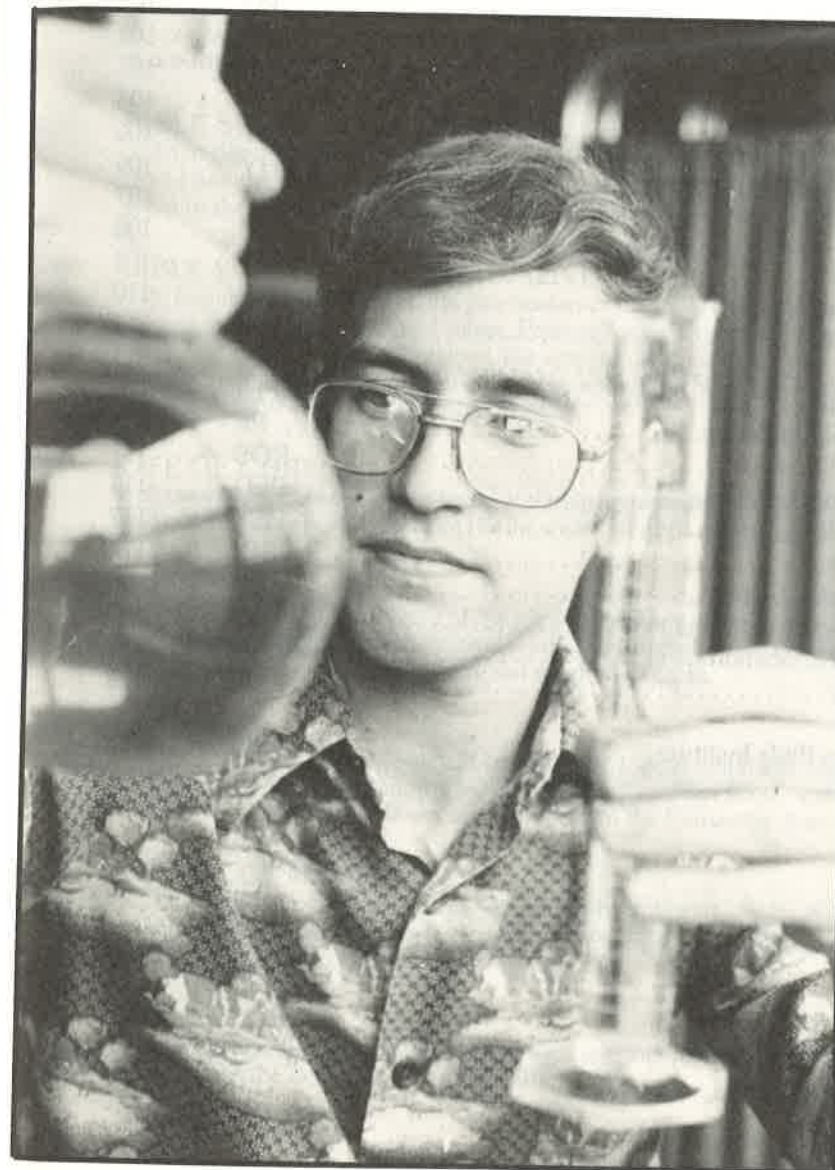
A Bachelor of Arts degree is available for this program by adding 6 hours of Foreign Language and 3 hours of Philosophy.

*Final Piano Proficiency Examination required

+Due to the number of semester hours required to this major the College recommends that students attend summer sessions in order to complete the program within four academic years.



*"Apply thine heart to instruction and
thine ears to the words of knowledge."
Proverbs 23:12*



Course Descriptions

CLEARWATER CHRISTIAN COLLEGE

Course Abbreviations

		Page Number
Bible.....	BI	95
Business.....	BU	98
Christian Education.....	CE	99
Computer Science.....	CS	100
Economics.....	ECO	101
Education.....	ED	101
English.....	EN	104
Fine Arts.....	FA	105
General Studies.....	GS	105
Geography.....	GY	106
History.....	HY	106
Languages.....	LA	107
Library Science.....	LS	108
Literature.....	LIT	108
Mathematics.....	MS	110
Missions.....	MI	111
Music.....	MU	111
Philosophy.....	PHI	115
Physical Education.....	PE	115
Political Science.....	POS	117
Preschool Education.....	PED	117
Psychology.....	PSY	117
Science.....	SCI	119
Secretarial Science.....	SEC	120
Sociology.....	SY	120
Special Education.....	SED	121
Speech.....	SP	122
Evening Bible Institute.....	EBI	123

BI

Courses in Bible

The Old and New Testament Bible Survey courses are required courses for all students and prerequisites for all Bible courses as follows:

BI 101 and 102 are prerequisites for Basic Bible Doctrines, BI 411, 412 and all Old Testament courses.

BI 103 is a prerequisite for Basic Bible Doctrines, BI 411, 412 and all New Testament courses except the Life of Christ, BI 201 and John's Gospel BI 250.

101 BIBLE SURVEY-OLD TESTAMENT I

An in-depth study of Genesis through Ruth with special emphasis on major doctrines, prophecy, and the chronological development of the nation of Israel. **3 credits.**

102 BIBLE SURVEY-OLD TESTAMENT II

An in-depth study of the chronological development of the nation of Israel from I Samuel through the end of Old Testament history. Special emphasis is given to the poetical books and the major and minor prophets. **3 credits.**

103 BIBLE SURVEY-NEW TESTAMENT

A foundational survey of the intertestament period and the world as it existed in the New Testament times. Primary focus is on the content of the New Testament with emphasis on the special characteristics and the key passages of each book. A survey of the biographical highlights of Jesus Christ and the Apostle Paul is included. **3 credits.**

201 LIFE OF CHRIST

A harmonistic chronological study of the significant events in the earthly life and ministry of Jesus Christ from His incarnation to His ascension. **3 credits.**

221 ACTS

A historical and topical study of the life and message of the early church as recorded in the book of Acts. Particular attention is given to the conversion of the Apostle Paul and his missionary out-reach. **3 credits.**

222 GENESIS

A careful study of the book of Genesis with special emphasis on Mosaic authorship, special creation, the fall of man, the Noachian flood, and the call and development of the chosen seed centered in the Patriarchs. **3 credits.**

240 GOSPEL OF MATTHEW

A study of the content of this Gospel with emphasis on its distinctive teaching. Special attention will be given to understand the Sermon on the Mount and the Olivet Discourse. **3 credits.**

250 JOHN'S GOSPEL

An analytical study of John's Gospel with special emphasis on Johannine theology and the deity of Christ. **3 credits.**

- 251 GENERAL EPISTLES**
An analytical study of the seven New Testament epistles which comprise the letters written to the universal church. Particular emphasis is given to the main teachings of each author in an effort to summarize the main thrust of his writing. **3 credits.**
- 258 PRISON EPISTLES**
A study of the books of Ephesians, Philippians, Colossians, and Philemon with emphasis on the position of the believer in Christ and his consequent opportunities and responsibilities. **3 credits.**
- 259 PASTORAL EPISTLES**
An exegetical and practical study of I and II Timothy and Titus with emphasis on pastoral theology. Recommended for ministerial students. **3 credits.**
- 263 POETICAL BOOKS**
An exegetical study of the Old Testament poetical books of Job, Psalms, Proverbs, Ecclesiastes, and the Song of Solomon. Emphasis is placed on composition of Hebrew poetry and figures of speech. **3 credits.**
- 271 CORINTHIAN EPISTLES**
A problematical and practical study of Paul's Corinthian letters. Application of principles to present day situations. **3 credits.**
- 301 BIBLICAL INTRODUCTION-OLD TESTAMENT**
A study of the inspiration, canon, text, and versions of the Old Testament. Includes a general introduction to the Old Testament and a special consideration of each book relative to questions of date and authorship. Some emphasis is given to the issues raised by the destructive claims of higher criticism, and answers are given based on the conservative position. **3 credits.**
- 302 BIBLICAL INTRODUCTION-NEW TESTAMENT**
A survey of the development and characteristics of the language, canon, and text of the New Testament as well as the authorship, date, place of writing, original recipients, occasions, purpose, and special problems of the individual books. **3 credits.**
- 307 COMPARATIVE RELIGIONS**
A comparative study of the world's major religions, their origins, histories, beliefs, and practices. Special emphasis is placed on their contrast with Christianity. **3 credits.**
- 308 CULTS**
A survey of the major cults, including new groups, their origins, histories, doctrines, and practices. Contrasts with Christianity are also included. **3 credits.**
- 330 EZEKIEL**
The visions and prophecies of Ezekiel will be compared with other portions of the prophetic scriptures, and an endeavor will be made to understand the prophet himself and his unique place in the revelation of God. **3 credits.**

- 334 DANIEL**
An analytical study of Daniel from the premillennial viewpoint. Special emphasis on historical and prophetic interpretation. **3 credits.**
- 337 MINOR PROPHETS**
A historical and premillennial study of the message of the twelve minor prophets with special emphasis on Messianic predictions. **3 credits.**
- 365 ISAIAH**
An inductive study of the message and content of this prophetic book. Consideration is given to critical problems and historical background. Special attention is given to those prophecies related to Jesus Christ and future times. **3 credits.**
- 370 INTERTESTAMENT PERIOD**
A detailed study of the so-called 400 silent years between the close of the Old Testament canon and the appearance of Christ. Events such as the Maccabean uprising, the Greek influence in Palestine, and the Roman presence in Bible lands are covered. Emphasis is given to the history of the various sects of the Jews which are important in New Testament times. **3 credits.**
- 401 BIBLICAL ARCHAEOLOGY**
A study of the significant archaeological discoveries that shed light on the history and culture of the nation of Israel and corroborate the historical accuracy of the Old Testament record. **3 credits.**
- 403 BOOK OF REVELATION**
An examination of the authorship, date, and the content of the book of Revelation. Methods of interpretation are examined with special attention to the millennial question. **3 credits.**
- 406 METHODS OF BIBLE STUDY IN TEACHING**
A study of the principles used in the interpretation of the Scriptures and the objectives and methods to be used in creative Bible teaching. Illustrations from both the Old and New Testaments are used in the study. **3 credits.**
- 411 BASIC BIBLE DOCTRINES I**
An in-depth study of the following Bible Doctrines: Theism, Bibliography, Theology, Angelology, and Anthropology. **3 credits.**
- 412 BASIC BIBLE DOCTRINES II**
An in-depth study of the following Bible Doctrines: Soteriology, Ecclesiology, and Eschatology. **3 credits.**
- 451 PROPHECY**
A detailed study of the prophetic events surrounding Christ's second advent as set forth in the Scriptures with special emphasis on the book of Daniel, II Thessalonians, and Revelation. **3 credits.**

- 452 ROMANS**
A contextual study of the book of Romans. Emphasis is placed on justification, sanctification, and Christian responsibilities. **3 credits.**
- 456 HEBREWS**
A contextual study of the book of Hebrews with emphasis on the superiority of Christ, His high priestly work, and the warnings and encouragements concerning Christian behavior. **3 credits.**
- 491 BIBLE SEMINAR**
Interaction of faculty with advanced students in an area of Biblical study. **1, 2, or 3 credits.**

BU Courses in Business

- 101 PRINCIPLES OF MANAGEMENT**
Addresses the nature of management work, management theories, the organization system, and managing for high performance. Emphasis is placed on the three basic management skills; goal setting, decision making, and interpersonal relations. **3 credits.**
- 103 SMALL BUSINESS MANAGEMENT**
A study of the fundamentals of managing small business firms. Designed to include the principles of creating a new venture of buying an existing business, small business marketing, finance, and business operations. **3 credits.**
- 201 PRINCIPLES OF ACCOUNTING I**
Prerequisite: MS 101 or equivalent. An introduction to fundamental accounting procedures: journalizing and posting transactions, managing payroll, accounting for sales and purchases, and preparing worksheets and financial statements. **3 credits.**
- 202 PRINCIPLES OF ACCOUNTING II**
Prerequisite: BU 201. Continued studies in accounting procedures with emphasis on notes and interest, inventory, depreciation, owner's equity, and interim financial statements. **3 credits.**
- 203 BUSINESS COMMUNICATIONS**
Designed to teach the mechanics and principles of effective business correspondence. Requires the student to compose various types of business letters, memorandums, and reports. **3 credits.**
- 300 MONEY, BANKING, AND FINANCIAL INSTITUTIONS**
Fundamental economic theories and practices in money and banking, investment, and monetary policy. **3 credits.**
- 303 BUSINESS LAW**
A study of the nature, classification, and characteristics of law. Examines the legal principles of contracts, torts, business crimes, sales, bailments, and personal property. **3 credits.**

- 305 COST ACCOUNTING**
Prerequisite: BU 202. A study of the fundamental principles and applications of job order, process, and standard cost accounting systems. Discussion of the techniques of managerial cost applications focuses on cost behavior analysis, cost-volume-profit decisions, breakeven analysis, direct cost analysis. **3 credits.**
- 401 CORPORATE FINANCE**
Prerequisite: BU 202. A survey of the various methods used to finance industry in the United States. Major topics of study include financial analysis and planning, working capital management, capital budgeting, capital structure, long-term financing, and cost of capital. **3 credits.**
- 402 TAXATION**
An introduction to the federal income tax structure, with emphasis on inclusions and exclusions to income, allowed deductions, capital gains and losses, and tax computation as they apply to personal and business returns. **3 credits.**
- 403 PRINCIPLES OF MARKETING**
An introduction to the marketing concept, with attention given to the market place, marketing mix, market strategy, marketing perspectives, and consumer buying behavior. **3 credits.**
- 404 LABOR & MANAGEMENT RELATIONS**
Prerequisite: BU 303. Studies the history and growth of American trade unionism, development of labor legislation, and the role of management and unions in the private and public sectors. Examines the processes, techniques, and issues of collective bargaining, union contract negotiation, administration, grievance, mediation, and arbitration. **3 credits.**
- 421 BUSINESS POLICY**
Prerequisite: Senior standing. Course is structured to unify and integrate the various concepts, principles, and skills learned in the individual, specialized business courses. Contemporary business issues are examined from secular and Biblical viewpoints. **3 credits.**

CE Courses in Christian Education

- 106 MODERN RELIGIOUS ISSUES**
Analysis of the ecumenical movement, its history, leaders (past and present), and projected effect on fundamentalism. **2 credits.**
- 111 SURVEY OF CHRISTIAN EDUCATION**
Organization and administration of the total education program of the local church. Such agencies as the Sunday School, week-day education, Junior Church, Vacation Bible School, youth ministries and adult education are compared and studied. **3 credits.**

301 PRACTICAL CHRISTIAN ETHICS

A survey of ethical systems with a view toward establishing a practical Christian ethic. **2 credits.**

391, 392 PRACTICAL MINISTERIAL TRAINING I, II

A practical training course for men called to full-time service. Special emphasis is given to the areas of pastoral duties, church administration, Christian education, music, youth, homiletics, and counseling. Required of male Bible and Biblical Literature majors during the Junior year. **1 credit each.**

CS Courses in Computer Science

Practice labs for which a \$25 materials fee is charged are required for each computer (CS) course.

100 INTRODUCTION TO COMPUTERS

An introduction to computers and data processing taught as a general education course for all students. Prerequisite for all other computer courses. **3 credits.**

201 APPLICATION PROGRAMMING

Prerequisite CS 100. A computer programming course using structured design techniques. **3 credits.**

250 ADVANCED MICRO COMPUTER APPLICATIONS (SEC 221)

Prerequisite CS 100. Involves word processing, electronic mail, electronic spread sheets, graphics packages, file handling, and other office automation concepts. **3 credits.**

300 DATA BASE DESIGN CONCEPT

Prerequisite CS 201. A course emphasizing data base design and programming in a data base environment. **3 credits.**

306 SYSTEMS ANALYSIS METHODS

Prerequisite CS 201. An overview of systems development using the life cycle methodology with emphasis on use of analytical tools, development of selection criteria, and development of comprehensive system documentation. **3 credits.**

410 DIRECTED STUDY IN APPLIED SYSTEM DEVELOPMENT

Prerequisite CS 300, CS 306. A capstone course using all knowledge gained in previous computer and business related courses with an emphasis on actually developing a working system. **3 credits.**

ECO Courses in Economics

201 PRINCIPLES OF ECONOMICS I

The fundamental economic concepts of scarcity, alternative courses of action, and problems of choice. How the economy decides what to produce, how to produce, and how to reward participants. **3 credits.**

202 PRINCIPLES OF ECONOMICS II

Prerequisite: ECO 201. An introduction to the modern theory of income determination with emphasis on the application of monetary fiscal policy oriented toward full employment, economic growth, and balance of payment stability. **3 credits.**

203 ECONOMIC CONCEPTS

Not open to Business Administration majors. Designed for teachers, Christian workers, and other students who desire an understanding of current economic problems. Covers basic economic concepts and institutions of private enterprise: Federal Reserve System, government and consumer spending, inflation, unemployment, interest rates, Consumer Price Index, Gross National Product, balance of trade, and other selected topics. **3 credits.**

ED Courses in Education

101 INTRODUCTION TO EDUCATION

A beginning level survey required of all education majors. Explores the history and principles of Western and American education. Surveys the program and function of all levels of education from preschool through higher education with a special emphasis on the Christian school. **2 credits.**

150 COMPUTERS IN EDUCATION

This course is designed to examine microcomputer systems and their application to school instructional functions. Special emphasis will be given to programming in BASIC, exploring computer uses in the field of education, evaluation and selection of computer hardware/software, and exploring resources on educational computing. **3 credits.**

201 PHILOSOPHY OF EDUCATION

A study of various philosophies of education and their relation to the Christian world-view and Christian philosophy of education. Applications of the Christian philosophy to learning and teaching methodology in the classroom. **2 credits.**

202 CURRICULUM & INSTRUCTION FOR ELEMENTARY SCHOOLS

Principles of developing a sound elementary curriculum and an analysis of the content and construction of the curriculums available to elementary schools. Practice in classroom methods and procedures including methods of discipline and the development of lesson plans and tests. **3 credits.**

203 TEACHER AIDE OBSERVATION

The student spends 30 hours working under the supervision of a classroom teacher in a school setting. Required of all education majors, except Music Education and Physical Education; taken during the sophomore year. **2 credits.**

- 204 MATERIALS & METHODS OF EDUCATION**
Introduction to the various materials and methods to aid the elementary and secondary teacher. General teaching methods, principles of discipline, and classroom management are addressed. Students become familiar with the use of audio-visual equipment. **3 credits.**
- 303 CURRICULUM & INSTRUCTION FOR SECONDARY SCHOOLS**
Principles of developing a sound secondary curriculum, and an analysis of the content and construction of the curriculums available to secondary schools. Practice in classroom methods and procedures including methods of discipline and development of lesson plans and tests. **3 credits.**
- 310 CHILDREN'S LITERATURE**
Evaluation and review of children's literature. Critical analysis of format and illustrations in light of purpose and philosophy of the author. Teaching techniques and uses of literature in the elementary classroom. **3 credits.**
- 311 HEALTH EDUCATION (SCI 311)**
Prerequisite: SCI 101. Designed for Elementary and Physical Education majors. Studies personal health practices, community services, and safety habits as they relate to the home, school, and community. Students develop a curriculum for elementary or physical education health studies. **3 credits.**
- 312 TEACHING READING IN THE SCHOOL**
Examination of methods and materials in the most widely used reading curriculums with a critical analysis of their strengths and weaknesses. Application of the techniques of teaching reading in the elementary classroom. **3 credits.**
- 313 METHODS OF TEACHING ELEMENTARY MUSIC**
Prerequisite: ED 202. An overview of special methods for teaching music in the elementary school, with emphasis on techniques and laboratory experience. Includes music, literature, and teaching aids for children regarding singing, rhythmic, creative, instrumental, and listening experiences, and their presentation. **3 credits.**
- 314 METHODS OF TEACHING ELEMENTARY LANGUAGE ARTS**
Prerequisite: ED 202. Materials, methods, and techniques of instruction in elementary language arts. **2 credits.**
- 315 METHODS OF TEACHING ELEMENTARY SOCIAL STUDIES**
Prerequisite: ED 202. Materials, methods, and techniques of instruction in elementary social studies. **2 credits.**
- 316 METHODS OF TEACHING ELEMENTARY MATHEMATICS**
Prerequisite: ED 202. Materials, methods, and techniques of instruction in elementary mathematics. **2 credits.**

- 317 METHODS OF TEACHING ELEMENTARY PHYSICAL EDUCATION**
Prerequisite: ED 202. Materials, methods, and techniques of instruction in elementary physical education. **2 credits.**
- 318 METHODS OF TEACHING ELEMENTARY SCIENCE**
Prerequisite: ED 202. Materials, methods, and techniques of instruction in elementary science. **2 credits.**
- 319 METHODS OF TEACHING ELEMENTARY BIBLE**
Prerequisite: ED 202. Materials, methods, and techniques of instruction in elementary Bible. **3 credits.**
- 320 METHODS OF TEACHING ELEMENTARY ART**
Prerequisite: ED 202. Materials, methods, and techniques of instruction in elementary art. **3 credits.**
- 321 METHODS OF TEACHING SECONDARY ENGLISH**
Prerequisite: ED 303. Procedures, materials, and organization for teaching secondary level English courses are investigated and demonstrated by the student. A research paper on some aspect of teaching grammar, composition, or literature completes the course. A secondary level tutoring project may be assigned at the discretion of the professor. **3 credits.**
- 322 METHODS OF TEACHING SECONDARY MUSIC**
Prerequisite: ED 303. Special methods in teaching music on the secondary school level. Junior and senior high school general music class curriculum, as well as organization of band, string, and vocal programs of instruction are emphasized. **3 credits.**
- 323 METHODS OF TEACHING SECONDARY SOCIAL STUDIES**
Prerequisite: ED 303. Materials, methods, and techniques of instruction for social studies courses on secondary school level. **3 credits.**
- 324 METHODS OF TEACHING SECONDARY PHYSICAL EDUCATION**
Prerequisite: ED 303. Materials, methods, and techniques of instruction for physical education courses on the secondary school level. **3 credits.**
- 325 METHODS OF TEACHING SECONDARY SCIENCE**
Prerequisite: ED 303. Materials, methods, and techniques of instruction for science courses on the secondary school level. **3 credits.**
- 327 METHODS OF TEACHING SECONDARY BUSINESS**
Prerequisite: ED 303. Materials, methods, and techniques of instruction for business courses on the secondary school level. **3 credits.**
- 328 METHODS OF TEACHING SECONDARY MATHEMATICS**
Prerequisite: ED 303. Materials, methods, and techniques of instruction for mathematics courses on the secondary school level. **3 credits.**

- 329 METHODS OF TEACHING SECONDARY BIBLE**
Prerequisite: ED 303. Materials, methods, and techniques of instruction for Bible courses on the secondary school level. **3 credits.**
- 402 ADMINISTRATION & SUPERVISION FOR TEACHERS**
 A course for the Education major in which the roles of administrators and teachers, their mutual responsibilities, and effective liaison are presented. Relationships with local, state, and other educational agencies are examined. **2 credits.**
- 404 TESTS & MEASUREMENTS**
 A study of available standardized psychological and educational tests and measurements and the interpretation of test results. Attention is given to the construction of classroom tests and quizzes. **2 credits.**
- 450 STUDENT TEACHING**
Prerequisites: Senior standing, division approval. Ten weeks of observation and direct teaching experience in a local school. The student is under the supervision of the education faculty of the College as well as the administrator and directing teacher within the participating school. The value of working under the supervision of a master teacher in a self-contained or departmentalized classroom is of utmost importance in putting theory into practice. **8 credits.**
- 491 EDUCATION SEMINAR**
 Informal discussion and presentation of information of current interest to those in the teaching profession. **1 credit.**

For courses in PHYSICAL EDUCATION, see PE.

For courses in PRESCHOOL EDUCATION, see PED.

For courses in SPECIAL EDUCATION, see SED.

EN Courses in English

- 099 BASIC ENGLISH**
 Principles of grammar and the mechanics of writing. Required for the student who fails to achieve a sufficiently high score on the ACT, the SAT or for those weak in language skills. **3 hours, no credit.**
- 101 ENGLISH COMPOSITION I**
 Provides an intensive review of traditional grammar while the student writes a variety of composition. **3 credits.**
- 102 ENGLISH COMPOSITION II**
Prerequisite: EN 101. Research techniques leading to the preparation of a term paper are investigated and applied. Creative and critical writing skills are practiced and evaluated. **3 credits.**

- 160 EFFECTIVE READING**
 An aid to the student in developing and maintaining reading skills and speed, with emphasis on comprehension. Diagnostic tests and reading machines are used to facilitate learning. **1 credit.**
- 170 EFFECTIVE COMPOSITION**
 Constructed to remedy deficiencies in English skills revealed through scores on the College Level Academic Skills Test. **3 credits.**
- 201 ADVANCED COMPOSITION**
 Specialized seminar for practice in literary exposition. Detailed study of research techniques and methods of scholarly literary presentation. **3 credits.**
- 304 CREATIVE WRITING**
 A critical study of literary forms for creative writing. Emphasis on writing various types of original compositions. **3 credits.**
- 321 ADVANCED GRAMMAR**
 A detailed study of English grammar for the upper level student who plans to teach English or who seeks a higher proficiency in English skills than that attained in freshman English composition. **3 credits.**

FA Course in Fine Arts

- 201 INTRODUCTION TO FINE ARTS**
 A historical study of the music, art, architecture, and drama from classical times to the present. The emphasis will be on creative talents as God's gifts, enabling man to praise God through all aesthetic channels. **3 credits.**

GS Courses in General Studies

- 101 FRESHMAN ORIENTATION**
 Assists students in establishing a good foundation for college life. Areas included are: campus adjustment, spiritual growth, social skills, motivation, memorization, note taking, scheduling, reading speed and comprehension, and specific study skills. Required for all freshmen; encouraged for new and returning students on academic probation. **1 credit.**
- 201 CAREER PLANNING**
 Career seminars, resume writing, job interview techniques, money management, and other practical aid for new professionals about to enter the job market. **0 credits.**
- 401 SENIOR SEMINAR**
Prerequisite: Senior standing. Preparation for the Graduate Record Exam, career seminars, resume writing, job interview techniques, money management, and other practical aid for new professionals about to enter the job market. **1 credit.**

GY**Courses in Geography****201 WORLD GEOGRAPHY I**

A study of the Western Hemisphere. An emphasis is placed on the location of countries, major cities, and land formations. The different cultures of the various regions will also be examined. The availability of natural resources and the conservation of those resources will be studied.

202 WORLD GEOGRAPHY II

A study of the Eastern Hemisphere. An emphasis is placed on the location of countries, major cities, and land formations. The different cultures of the various regions will also be examined.

HY**Courses in History****201, 202 UNITED STATES HISTORY I & II**

History of the United States from the earliest explorations to the era of the Great Society. Special attention is paid to the political, economic, cultural, and religious growth of the United States. **3 credits.**

221, 222 HISTORY OF WESTERN CIVILIZATION I & II

A survey of western civilization from the beginning of writing to the present time. Special emphasis is given to the political, social, cultural, and religious developments in the history of mankind. **3 credits.**

301, 302 ANCIENT HISTORY I & II

The origins and histories of the ancient Near East. First semester: the ancient Semitic world of Mesopotamia, Egypt, Syria, Israel, and Persia. Second semester: the Minoan, Hellenic, and Hellenistic periods, and the rise and fall of the Roman Empire. **3 credits.**

304 RECENT AMERICAN HISTORY

The political, social, economic, and cultural development of the United States during the twentieth century. Focuses on the Progressive Movement, World War I, the Twenties, the Depression, the New Deal, World War II, and the Cold War. **3 credits.**

311 BRITISH HISTORY

History of England from the time of the Roman occupation until the present time. Special attention is given to the development of the British Empire, and the role of Great Britain in the modern world. **3 credits.**

318 RECENT EUROPEAN HISTORY

Political and Cultural development in twentieth century Europe. Special emphasis is given to World War I, the rise of Communism, Fascism, and Nazism; the inter-war period; World War II; and the various plans for European cooperation. **3 credits.**

325 CIVIL WAR & RECONSTRUCTION

An in-depth study of the factors of sectionalism and states' rights which led to the Civil War. Heavy emphasis is placed on military campaigns and the post-war Reconstruction. **3 credits.**

332**ORIGINS OF SOCIALISM AND COMMUNISM**

A seminar course of directed readings and discussions tracing the historical and political causes of the rise of socialism and communism including an emphasis on Communist ideology and methodology, literature and revolution, and the world wide development of Communist nations. **3 credits.**

339**MEDIEVAL ERA**

A study of the formation of the Medieval West from the dissolution of the Roman Empire through the fourteenth century. The course will examine how the Roman, Christian, and Germanic traditions fused to form a new European civilization. **3 credits.**

401, 402**CHURCH HISTORY I & II**

First semester: the Christian church from its beginning to the Reformation. Second semester: the Reformation and Counter-Reformation, the reformer, the persecution, and developments of post-Reformation denominations and their effects on governments and culture. **3 credits each.**

404**HISTORIOGRAPHY**

A seminar course consisting of directed reading and discussions concentrating on the theory and history of historical literature including study of historical methodology and analysis of historical knowledge. **3 credits.**

409**COLONIAL ERA**

A seminar course with directed readings and discussion covering the Colonial Period of American history from the European discovery of America through the American War of Independence with comprehensive study of the economic, ethnic, and social culture of the developing American society. **3 credits.**

491**HISTORY SEMINAR**

Selected problems in history and an examination of historiography and philosophies of history. **3 credits.**

LA**Courses in Languages****101, 102****ELEMENTARY GREEK I & II**

Prerequisite: EN 102. A foundational study of the grammar, vocabulary and syntax of New Testament Greek with the goal of preparing the student to translate in the Greek New Testament. **3 credits each.**

103, 104**ELEMENTARY HEBREW I & II**

Prerequisite: EN 102. An introduction to the Hebrew of the Old Testament stressing the mastery of basic forms, vocabulary, grammar, and pronunciation. Some emphasis is given to the translation of simple passages in the Old Testament. Use of lexicons and other language learning aids will be introduced. The course is designed to help pre-seminary students as well as others. **3 credits each.**

- 105, 106** **ELEMENTARY SPANISH I & II**
Prerequisite for LA 106: EN 102 and LA 105 or satisfactory score on language placement test. Basic fundamentals of the Spanish language and culture are considered through tapes, conversation, and the written word. **3 credits each.**
- 107, 108** **ELEMENTARY GERMAN I & II**
Prerequisite for LA 108: EN 102 and LA 107 or satisfactory score on language placement test. Elementary course stressing speaking, writing, and reading the German language by the study of the fundamentals of German grammar. **3 credits each.**
- 201, 202** **INTERMEDIATE GREEK I & II**
Prerequisite: LA 102. A study of advanced grammar, vocabulary based on word frequency lists, and methodology for word studies with the goal of preparing the student to write simple exegetical commentary. Translation of varied portions of the Greek New Testament. **3 credits each.**
- 205, 206** **INTERMEDIATE SPANISH I & II**
Prerequisite: LA 106 or satisfactory score on language placement test. Review of the correct usage of the language, with an oral emphasis. Culture and some literature are studied. **3 credits each.**
- 207, 208** **INTERMEDIATE GERMAN I & II**
Prerequisite: LA 108 or satisfactory score on language placement test. An intermediate course designed to review grammar, expand vocabulary, improve reading skills and increase knowledge of German culture. **3 credits each.**
- 301, 302** **GREEK TEXT STUDIES I & II**
Prerequisite: LA 202. Translation and exegetical study of the Greek text of various New Testament books. Selection is made by the instructor after consultation with the students involved. **3 credits each.**

LS **Course in Library Science**

- 201** **RESEARCH METHODS**
Prerequisite: EN 101, 102. Designed to acquaint the student with the techniques of research, the resources of the Library, and to direct him in developing strategies for researching information from various subject disciplines with emphasis on the subject area of the student's major. **3 credits.**

LIT **Courses in Literature**

- 211, 212** **AMERICAN LITERATURE I & II**
 An intensive study of several major works of American literature which are representative of their periods and genres. Each course should enable the student to develop his ability to read discerningly and to understand the cultural basis for the literature. **3 credits each.**

- 221, 222** **ENGLISH LITERATURE I & II**
 An intensive study of works representative of periods and development in English literature. Each course should aid the student in understanding cultural development and progression and in forming his own ideas and judgments in relation to these major works. Emphasis is placed on the influence of the Bible upon English literature. **3 credits each.**
- 324** **ENGLISH LITERATURE OF THE EIGHTEENTH CENTURY**
 A study of the representative literature of the neo-classical and pre-Romantic era including such writers as Defoe, Swift, Pope, Gray, Johnson, Goldsmith, Burns, and Blake. Special emphasis is given to the early development and rise of the novel as a major literary form. **3 credits.**
- 332** **SHAKESPEARE**
 An in-depth study of Shakespeare's works, with greatest emphasis on the tragedies. **3 credits.**
- 334** **MILTON**
 A study of Milton's poetical works (mainly *Paradise Lost*) selected prose, and the author's philosophy in relation to his historical setting. **3 credits.**
- 431** **CHAUCE**
 A study of Chaucer's major works and other major works of the medieval period of English literature. Much is read in Middle English in order to familiarize the student with an important stage in the development of the English language. **3 credits.**
- 436** **VICTORIAN LITERATURE**
 Examines the major prose and poetry of the Victorian period including the Victorian novel. **3 credits.**
- 441** **CONTEMPORARY LITERATURE**
 A study of selected short stories from the modern and contemporary periods, including such authors as Henry James, James Joyce, Dostoevsky, and Tolstoy, with an individually assigned novel from the same periods. Special emphasis given to evaluation and development of literary discernment. **3 credits.**
- 490** **LITERARY CRITICISM**
 Advanced seminar course for evaluating the literary qualities of traditional and modern works. Analysis of the contributing effects of style, form, and philosophy to total literary value. **3 credits.**
- 491** **LITERATURE SEMINAR**
 Interaction of faculty with advanced students in an area of literary study. **1, 2, or 3 credits.**

MS**Courses in Mathematics**

- 099 BASIC MATHEMATICS**
Preparatory course for MS 101. Required for the student who fails to achieve a sufficiently high score on the ACT, the SAT, or in high school mathematics. **3 hours, no credit.**
- 101, 102 COLLEGE MATHEMATICS I & II**
A study of various mathematical topics, including set theory and symbolic logic, numeration systems, equations and inequalities, graphing, geometry, probability and statistics, and computer applications. **3 credits each.**
- 201 COLLEGE ALGEBRA**
A study of sets, properties of real numbers, algebraic expressions and polynomials, solving equations and inequalities, and various relations and functions and their graphs. **3 credits.**
- 202 COLLEGE TRIGONOMETRY**
Circular and trigonometric functions and their graphs, radian and degree measure of angles, verifying trigonometric identities, solving triangles, and the laws of sines and cosines. **3 credits.**
- 211 CALCULUS I**
Prerequisites: MS 201, 202. A review of plane geometry and functions and their graphs. A study of limits and continuity of functions, the derivative, and applications. The integral with the fundamental theorem of calculus and Riemann sums. An introduction to some applications of the integral. **3 credits.**
- 212 CALCULUS II**
Continuation of MS 211 with transcendental functions, further methods of differentiation and integration, and some further applications. **3 credits.**
- 311, 312 STATISTICS I & II**
Prerequisite: MS 201. A study of summarization of data, probability, probability distributions, normal distribution, sample mean and standard deviation, statistical estimation, testing, hypothesis, chi-square distributions, lineary correlations, and regression. **3 credits each.**
- 401 LINEAR ALGEBRA**
Prerequisites: MS 211, 212. A study of systems of lineary equations, matrices, and vector spaces and their properties. **3 credits.**
- 402 NUMERICAL ANALYSIS**
Prerequisites: MS 211, 212. A study of finite differences, computer techniques, interpolation and quadrature, and numerical solution of algebraic and transcendental equations. **3 credits.**
- 421 DIFFERENTIAL EQUATIONS**
Prerequisites: MS 211, 212. A study of first order linear and non-linear differential equations, higher order linear equations and applications. **3 credits.**

MI**Course in Missions**

- 201 INTRODUCTION TO MISSIONS & EVANGELISM**
Studies the Biblical foundations of missions and the expansion of missionary activities from Pentecost to the present. Practical instruction in personal Christian testimony in the world and in the church including modern opportunities and problems. **3 credits.**

MU**Courses in Music**

- 101 FUNDAMENTALS OF MUSIC**
Not open to Music or Music Education majors. Covers the rudiments of music pertaining to notation and sight-singing. Practice in song leading techniques. **1 credit.**
- 103 MUSIC APPRECIATION**
Not open to Music or Music Education majors. A general survey of the world's great music and its composers, with emphasis upon the development of intelligent listening. Includes a study of musical notation and terminology. **3 credits.**
- 123, 124 FRESHMAN MUSIC THEORY I & II**
Basic harmony, melodic dictation, sight-singing, ear training, and elementary keyboard harmony. Some instrumental or vocal background desirable. **3 credits.**
- 160 COLLEGE CHOIR**
Open to all who love to sing serious music. Presents a major Christmas work and performs Sunday evenings during the Spring semester. Extra time commitment is expected. A maximum of four credits may be applied toward graduation requirements except for Sacred Music and Music Education majors. **3 credits each.**
- 170 CHAPEL SINGERS**
A mixed ensemble chosen by audition. Represents the College through performances in high school assemblies, local churches, and civic organizations. May be taken for credit or non-credit. A maximum of four credits may be applied toward graduation requirements. **1 credit each.**
- 213, 214 MUSIC HISTORY I & II**
A survey of the historical development of musical styles and the literature representative of those styles. **2 credits each.**
- 223, 224 SOPHOMORE MUSIC THEORY I & II**
Advanced harmony, melodic and rhythmic dictation, ear training, keyboard harmony, and sight-singing of more advanced chromatics and melodies with some rhythmic difficulty. **3 credits each.**
- 241 BRASS TECHNIQUES**
Basic class instruction in brass instruments. **1 credit.**

- 242 PERCUSSION TECHNIQUES**
Basic class instruction in percussion instruments. **1 credit.**
- 243 STRING TECHNIQUES**
Basic class instruction in string instruments. **1 credit.**
- 244 WOODWIND TECHNIQUES**
Basic class instruction in woodwind instruments. **1 credit.**
- 289 BRASS ENSEMBLE**
Prerequisite: Instructor's permission. Group practice and performance of selected sacred music in chapel and in local churches. **1 credit each.**
- 323 FORM & ANALYSIS**
Prerequisite: MU 224. A study of the development of form in music beginning with 16th century counterpoint and concluding with sonata-allegro form. Most of the classwork consists of music analysis by the student. **2 credits.**
- 324 SURVEY OF ORCHESTRATION & ARRANGING**
Prerequisite: MU 224. A survey of the principles of orchestration and choral arranging. **2 credits.**
- 332 PIANO PEDAGOGY**
A study of the methods, techniques, and literature for teaching piano and the business of piano teaching. **2 credits.**
- 334 VOCAL PEDAGOGY**
A study of the methods, techniques, and basic literature in teaching voice. **2 credits.**
- 352 CONDUCTING**
Prerequisites: MU 124 and two semesters of College Choir. Emphasis upon clarity in the manipulation of fundamental patterns and individual instruction in expressive baton techniques. Workshop experience with critique from instructor. Parallel reading that leads to knowledge of various schools or procedures in conducting. **2 credits.**
- 354 CHORAL LITERATURE**
The repertoire of the minister of music in the total church program. Examines longer and shorter forms of sacred choral works. **2 credits.**
- 356 CHURCH MUSIC ADMINISTRATION**
Philosophies of music in worship based on the Scriptures and Christian heritage; organizing and administering a church music program; the responsibilities of the minister of music. **2 credits.**
- 364 HYMNOLOGY**
A survey of hymn history and development from biblical times to the present day. **3 credits.**

- 401 MUSIC SEMINAR**
Interaction of faculty with advanced students in an area of musical study. **1, 2, or 3 credits.**
- 423 COUNTERPOINT (SENIOR THEORY)**
Prerequisite: MU 224. The study of compositions for examples and principles of counterpoint with particular emphasis on contrapuntal techniques represented in Bach's works. Emphasizes fundamental principles of tonal functions, voice leading, harmonic formulae, and compositional devices to create original examples of two- and three-part counterpoint and canon. **3 credits.**
- 490 KEYBOARD HARMONY**
Keyboard harmonization of melodies and basses, sequences, cadences, modulations, transcriptions, and improvisations. **1 credit.**

MFL, MTR, MOR, MVO, MPI, MU *Courses in Applied Music*

- 101, 102, 201, 202 APPLIED MUSIC—NON MUSIC MAJOR**
For the non-Music Major interested in enriching his life by developing skill in applied music. No prior experience required. **1 credit each.**
- Prefix code:**
MFL—Flute
MOR—Organ
MPI—Piano
MTR—Trumpet
MVO—Voice

MFL, MTR, MOR, MVO, MPI, MU *Courses in Applied Music*

- 111, 112, 211, 212**
For the Sacred Music or Music Education Major. Proficiency jury required. Final proficiency examination required for graduation. **1 credit each.**
- Prefix code:**
MFL—Flute
MOR—Organ
MPI—Piano
MTR—Trumpet
MVO—Voice

- MOR, 121, 122 APPLIED ORGAN**
Prerequisite: Piano or organ background at the level of Bach inventions or Beethoven sonatas. Technique in organ playing, studies for manuals and pedals, keyboard studies from pre-Baroque and Baroque periods, preparatory studies for hymn playing and hymns. Proficiency jury required at end of semester. **2 credits each.**

- MOR, 221, 222 APPLIED ORGAN**
Prerequisite: Necessary competency at MOR 122 level. Manual and pedal techniques of organ playing. Keyboard studies from Bach: selected preludes and fugues, miscellaneous preludes and fantasies. Other compositions from the Baroque, classical, romantic, impressionistic, and contemporary repertoire. Proficiency jury required at end of semester. **2 credits each.**

- MOR, 321, 322 APPLIED ORGAN**
Prerequisite: Necessary competency at MOR 222 level. Manual and pedal techniques of organ playing. Includes Bach preludes and fugues, Brahms choral preludes. Mendelssohn sonatas, and selected contemporary compositions. Joint recital recommended. **2 credits each.**

MOR, APPLIED ORGAN

421, 422 *Prerequisite: Necessary competency at MOR 322 level.* Manual and pedal techniques of organ playing. Preparation and presentation of senior recital consisting of advanced repertoire from Bach: toccatas, preludes and fugues; Franck: chorales; and selections from contemporary organ literature. **2 credits each.**

MPI, APPLIED PIANO

121, 122 Beginning piano techniques, study and performance of the Masters in composition. Proficiency jury required at end of semester. **2 credits each.**

MPI, APPLIED PIANO

221, 222 *Prerequisite: Necessary competency at MPI 122 level.* A continuation and intensification of the work described in MPI 122 and 123. Includes an analysis of elementary through lower-intermediate piano literature. Proficiency jury required at end of semester. **2 credits each.**

MPI, APPLIED PIANO

321, 322 *Prerequisite: Necessary competency at MPI 222 level.* Classic piano works together with preparation of the senior recital material. Joint recital recommended. **2 credits each.**

MPI, APPLIED PIANO

421, 422 *Prerequisite: Necessary competency at MPI 322 level.* Preparation and presentation of senior recital program, consisting of representative compositions such as Bach, Prelude and Fugue from the Well-Tempered Clavichord; Beethoven, Sonata Op. 81A; Schumann, Fantasy Pieces; Chopin, Nocturnes or Polonaises; and Debussy. Images, Advanced accompanying required. **2 credits each.**

MVO, APPLIED VOICE

121, 122 Correct breathing and tone production, simple vocalizations, principles of phonetics as applied to singing simple songs in Italian and English. Student is automatically enrolled in voice performance class, one hour weekly. Proficiency jury required at end of semester. **2 credits each.**

MVO, APPLIED VOICE

221, 222 *Prerequisite: Necessary competency at MVO 122 level.* Vocal technique, including breath control, resonance, and diction as applied to singing arias from oratorios, cantatas in English, and German art songs. Student is automatically enrolled in voice performance class, one hour weekly. Proficiency jury required at end of semester. **2 credits each.**

MVO, APPLIED VOICE

321, 322 *Prerequisite: Necessary competency at MVO 222 level.* Preparation and presentation of senior recital representing all styles and languages studied. Vocal technique, including breath control, resonance, and diction as applied to singing arias from cantatas, oratorios, opera, and French art songs. Student is automatically enrolled in voice performance class, one hour weekly. Proficiency examination required at end of semester. Joint recital recommended. **2 credits each.**

MVO, APPLIED VOICE

421, 422 *Prerequisite: Necessary competency at MVO 322 level.* Preparation and presentation of senior recital representing all styles and languages studied. Vocal technique including breath control, resonance, and diction as applied to singing arias from opera, oratorios, and contemporary American and British art songs. Student is automatically enrolled in voice performance class, one hour weekly. **2 credits each.**

MTR, APPLIED TRUMPET

121, 122 Private instruction on trumpet or cornet. A progressive study of technique. Representative solo literature from all style periods. Proficiency jury required at end of semester. **2 credits each.**

MTR, APPLIED TRUMPET

221, 222 *Prerequisite: Necessary competency at MTR 122 level.* A progressive study of trumpet or cornet technique. Representative solo literature from all style periods. Proficiency jury required at end of semester. **2 credits each.**

MTR, APPLIED TRUMPET

321, 322 *Prerequisite: Necessary competency at MTR 222 level.* A progressive study of trumpet or cornet technique. Representative solo literature from all style periods. Joint recital recommended. **2 credits each.**

MTR, APPLIED TRUMPET

421, 422 *Prerequisite: Necessary competency at MTR 322 level.* Progressive study of trumpet or cornet techniques. Preparation and presentation of senior recital representing solo literature from all style periods. **2 credits each.**

PHI**Courses in Philosophy****201 INTRODUCTION TO PHILOSOPHY**

A study of the issues of philosophy centered in such classical problems as truth, knowledge, origins, values and religious experience. Includes a survey of the leading systems of philosophy. All systems are compared and contrasted with the Christian world view based on divine revelation. **3 credits.**

302 CONTEMPORARY PHILOSOPHY

An apologetic survey of contemporary philosophy from Kant to the present with special emphasis on those systems leading to Existentialism in its modern form and influence. **3 credits.**

PE**Courses in Physical Education****101 PHYSICAL EDUCATION ACTIVITY**

108 Two semesters required of each student unless specifically excused by the Registrar. May be selected as a general elective after general education requirements are met. A maximum of three credits may be applied toward graduation requirements. **1 credit each.**

101W Creative Conditioning & Fitness I	102M Soccer, Golf, Tennis
103W Creative Conditioning & Fitness II	104M Basketball, Softball
105W Basketball, Volleyball, Bowling	106M Weightlifting & Fitness I
107W Tennis, Softball, Badminton	108M Weightlifting & Fitness II

(W = Women; M = Men)

121 FIRST AID

Procedures for immediate and temporary care of sick and injured. Red Cross certification is given. **1 credit.**

151 PRINCIPLES OF PHYSICAL EDUCATION

Introduction to physical education as a profession including an overview of the fields of study within physical education. **2 credits.**

170 COLLEGE VARSITY SPORTS

Participation in a varsity sport satisfies either a one-hour physical education activity or a one-hour general elective requirement. Additional participation is on a non-credit basis. **1 credit.** Credit offered in the following varsity sports or squads:

Cheerleading	Basketball
Soccer	Baseball
Volleyball	Softball

201, 204 TEACHING TEAM SPORTS

Designed for the Physical Education major for the purpose of developing personal skills in selected activities. Analysis of each skill enables the student to understand the mechanics of each sport and to develop proper teaching cues. Physical Education majors must take six hours in this series. **2 credits each.**

201 Volleyball & Basketball	202 Baseball, Softball & Tennis
203 Golf & Miscell. Sports	204 Soccer, Track & Field

311 THEORY AND PRACTICE IN COACHING VOLLEYBALL & SOFTBALL

Discussions of positions, defense, offense, and team play. Emphasis on developing Christian character in student athletes. **2 credits.**

312 THEORY AND PRACTICE IN COACHING SOCCER/ TRACK & FIELD

Discussions of strategy, offense, defense, individual and team play, and scouting. Emphasis on developing Christian character in student athletes. **2 credits.**

313 THEORY AND PRACTICE IN COACHING BASKETBALL

Discussions of strategy, offense, defense, individual and team play, and scouting. Emphasis on developing Christian character in student athletes. **2 credits.**

314 THEORY AND PRACTICE IN COACHING BASEBALL

Discussions of positions, strategy, and scoring. Emphasis on developing Christian character in student athletes. **2 credits.**

361 METHODS OF TEACHING ADAPTIVE PHYSICAL EDUCATION

An overview of various handicapping conditions with emphasis on the mentally retarded. Methods of evaluation and teaching special students. **3 credits.**

378 KINESIOLOGY

Prerequisites: SCI 101, SCI 204, SCI 205. Examines body coordination as it relates to origins, insertions, and innervation of muscles. **3 credits.**

381 ATHLETIC TRAINING

Prerequisites: PE 121, SCI 204, SCI 205. Studies principles and procedures for training athletes. Emphasizes prevention and care of athletic injuries. **2 credits.**

472 ORGANIZATION AND ADMINISTRATION OF PHYSICAL EDUCATION

Prerequisite: PE 151. Studies of the organizational and administrative duties and problems related to physical education and athletic programs in the school. **3 credits.**

478 EXERCISE PHYSIOLOGY

Prerequisites: SCI 101, SCI 204, SCI 205. Studies acute and chronic adaptations of various bodily systems to exercise. **3 credits.**

491 PHYSICAL EDUCATION SEMINAR

Interaction of faculty with advanced students in an area of physical education study. **1, 2, or 3 credits.**

POS**Courses in Political Science****205 AMERICAN GOVERNMENT**

Surveys the development and function of American government with special attention given to its present problems. **3 credits.**

305 ORIGINS OF SOCIALISM AND COMMUNISM

(See HY 332) **3 credits.**

PED**Courses in Preschool Education****130 COGNITIVE EXPERIENCES IN THE PRESCHOOL**

Emphasizes learning through experiences in math, science, social studies, and health. Student is required to carry out cognitive activities in children's centers. **2 credits.**

131 CREATIVE EXPERIENCES IN THE PRESCHOOL

Emphasizes learning through experiences in art, music, play, dramatics, story-telling, creative movement, and games. Student is required to carry out creative activities in children's centers. **2 credits.**

132 TEACHER AIDE OBSERVATION

Student works under the supervision of a teacher in a preschool setting for a total of 30 clock hours. **2 credits.**

200 STUDENT TEACHING

Prerequisites: Second year standing, Division approval. Observation and direct teaching experience in a local preschool. The student is under the supervision of the education faculty of the College as well as the administrator and directing teacher in the preschool. **4 credits.**

PSY**Courses in Psychology****271 GENERAL PSYCHOLOGY**

A survey of the field including psychological measurement, perception, learning, memory, motivation, emotion, and personality. Introduces professional and specialized fields of psychology. **3 credits.**

- 283 HUMAN GROWTH & DEVELOPMENT I**
Studies the physical, spiritual, educational, and emotional development of human life from birth through adolescence. **3 credits.**
- 301 HUMAN GROWTH & DEVELOPMENT II**
Studies the developmental processes and the socio-psychological forces affecting them from the end of adolescence through the remainder of human life. **3 credits.**
- 305 EXPERIMENTAL PSYCHOLOGY**
An introduction to the research process including the basic nature of research, simple research designs, and statistics for the behavioral sciences. Required for graduate work in psychology. **3 credits.**
- 311 PSYCHOLOGICAL TESTING**
An introduction to the principles of psychological testing. The function, characteristics, and use of selected tests. Administration, scoring, and interpretation of sample tests. **3 credits.**
- 322 PERSONALITY THEORY**
Studies the development, organization, classification, methods of assessment, and dynamics of personality. **3 credits.**
- 325 CLINICAL & COUNSELING PSYCHOLOGY**
The principal approaches to counseling are considered. Methods in group and individual counseling; theories and procedures used in clinical and counseling psychology. **3 credits.**
- 328 ABNORMAL PSYCHOLOGY**
Studies the causes of personality disorganization including neurotic and psychotic behavior and their origin, classification, and symptoms. Surveys diagnosis, therapy, and prevention with attention to cultural and philosophical factors of abnormal behavior. **3 credits.**
- 337 MARRIAGE & THE FAMILY**
Examines premarital issues, personality types, role responsibility, conflict avoidance and resolution, and the marriage contract from a Biblical viewpoint. **3 credits.**
- 425 SOCIAL PSYCHOLOGY**
Investigates environmental factors in social behavior, moral development, positive social action, prejudice, and discrimination. The psychology of group interaction including power, leadership, and control. **3 credits.**
- 426 COUNSELING THROUGH THE SCRIPTURES**
Studies general and specific passages of Scriptures appropriate in dealing with a variety of marriage and family related problems. **3 credits.**
- 454 THEORIES & SYSTEMS OF PSYCHOLOGY**
Examines the historical, philosophical, and scientific ideas which provide the foundation for current psychological theory and practice. **3 credits.**

- 475 TECHNIQUES OF CHRISTIAN COUNSELING**
An objective appraisal of the approach, method, and theory presented by some of the more popular authors and counselors including Adams, Crabb, and Dobson. **3 credits.**
- 491 PSYCHOLOGY SEMINAR**
Interaction of faculty with advanced students in an area of psychological study. **1, 2, or 3 credits.**

SCI**Courses in Science**

- 101 GENERAL BIOLOGY**
An introductory study of five kingdoms with regard to anatomical and physiological composition and their ecological balance. A weekly lab provides opportunity to correlate information. **4 credits.**
- 102 PHYSICAL SCIENCE**
A fundamental exploration of specific fields of physical science: astronomy, geology, meteorology, and earth sciences. **4 credits.**
- 204 ANATOMY & PHYSIOLOGY I**
Prerequisite: SCI 101. A detailed study of the total anatomical and physiological composition of man with emphasis on skeletal, muscular and cellular systems. **4 credits.**
- 205 ANATOMY & PHYSIOLOGY II**
Prerequisite: SCI 101, SCI 204. Advanced work with the fundamental systems of man including the biochemical mechanics of digestion, excretion, respiration, circulation, and reproduction. **4 credits.**
- 301 ORIGINS**
A study of many aspects of two opposing models of origins: evolution and creationism. Course content includes both Biblical and scientific information used as evidence in support of special creation. **2 credits.**
- 304 BOTANY**
Prerequisite: SCI 101. A descriptive phytogenic survey of the nonvascular and vascular plants with an emphasis on their life cycle. Laboratory study on the integration of the anatomical and physiological aspects in vascular plants. **4 credits.**
- 305 INVERTEBRATE ZOOLOGY**
Prerequisite: SCI 101. A survey course of invertebrate phyla with emphasis on structure function, development, reproduction and classification. Laboratory and field experiences will be given in collection, preservation and classification of the phyla. **4 credits.**
- 311 HEALTH (See ED 311)**
Prerequisite: SCI 101. Designed for Elementary and Physical Education majors. Studies personal health practices, community services, and safety habits as they relate to the home, school, and community. Students develop a curriculum for elementary or physical education health studies. **2 credits.**

SEC *Courses in Secretarial Sciences*

101 SECRETARIAL PROCEDURES

Students develop ability and skill in a variety of office responsibilities. Covers duties expected of a secretary in the normal operations of a business office including the use of modern office equipment. **3 credits.**

107 INTRODUCTORY TYPING

Students learn the touch system of electric typing and develop accuracy, rhythm, and speed. Presents form, arrangement, and style of business letters. **3 credits.**

108 INTERMEDIATE TYPING

Prerequisite: SEC 107. Experience in typing a wide variety of cards, envelopes, reports, manuscripts, forms, and general correspondence. **3 credits.**

110 BEGINNING SHORTHAND

Introduces the Gregg system of shorthand emphasizing theory and technique. **3 credits.**

111 INTERMEDIATE SHORTHAND

Prerequisite: SEC 110. Emphasis on increasing shorthand speed and accuracy while advancing the student's skill level of the Gregg system. **3 credits.**

207 ADVANCED TYPING

Prerequisite: SEC 108. Advanced work with letters, tables, statistical data, legal forms, bookkeeping reports, and documents with emphasis on speed and accuracy. **3 credits.**

208 TRANSCRIPTION

Prerequisite: SEC 207. Emphasizes the production of mailable office documents from dictation that meet the approval of office supervisors. **3 credits.**

210 ADVANCED SHORTHAND

Prerequisite: SEC 111. Concentrates on improving speed and accuracy, building vocabulary, spelling, punctuation, and grammar skills. Varied and increasingly complex materials give the students wider capability in the business world. **3 credits.**

221 ADVANCED MICROCOMPUTER APPLICATIONS (CS 250)

Studies the role of word processing in the business environment. Examines the use of equipment by which information is reproduced, communicated, distributed, stored, retrieved, and protected. **3 credits.**

SY *Course in Sociology*

261 GENERAL SOCIOLOGY

Principles of sociology as related to the basic problems and nature of human relationships. **3 credits.**

SED *Course in Special Education*

200 INTRODUCTION TO EXCEPTIONAL CHILDREN

Examines the incidence, causes, diagnosis, agencies for referral, and the recommended teaching procedures for exceptional children in the following categories: specific learning disabilities, emotionally handicapped and socially maladjusted, hearing impaired, sight impaired, mentally retarded, physically handicapped, and the gifted. **3 credits.**

210 LANGUAGE DEVELOPMENT & SPEECH DISABILITIES

Studies development of language and common speech disabilities. **3 credits.**

300 INTRODUCTION TO MENTAL RETARDATION

Examines the biological, psychological, and sociological foundations of mental retardation. **3 credits.**

320 CURRICULUM & METHODS FOR THE TRAINABLE MENTALLY RETARDED

The development of church and school programs, curriculums, and methods for the trainable mentally retarded child and adult. **3 credits.**

321 CURRICULUM & METHODS FOR THE EDUCABLE MENTALLY RETARDED

The development of church and school programs, curriculum, and methods for the educable mentally retarded child and adult. **3 credits.**

330 THEORIES OF LEARNING DISABILITIES

Studies the causes and characteristics of learning disabilities. **3 credits.**

340 DIAGNOSIS OF THE LEARNING DISABLED

The utilization of formal and informal testing instruments in the location and remediation of learning disabilities. **3 credits.**

341 INDIVIDUALIZED INSTRUCTION & CLASSROOM MANAGEMENT FOR THE LEARNING DISABLED

The development of individualized programs for the learning disabled based upon the results of diagnostic tests. **3 credits.**

350 STUDENT PRACTICUM IN SPECIAL EDUCATION

Opportunity for supervised experience with exceptional children in a classroom setting. **1, 2, or 3 credits.**

410 EDUCATIONAL TESTING FOR EXCEPTIONAL CHILDREN

Study of the measures used in evaluating children in special education and individual educational planning based on diagnostic information. **3 credits.**

491 SPECIAL EDUCATION SEMINAR

Advanced study of a specific subject in the student's area of specialization. **1, 2, or 3 credits.**

162 FUNDAMENTALS OF SPEECH

Basic principles of speech writing and delivery, including voice production, body expression, and audience control. Preparation and presentation of various types of speeches. **3 credits.**

301 ORAL INTERPRETATION

Prerequisite: SP 162. Oral presentation of various types of literature including monologue, dialogue, and drama, with emphasis on effective oral reading of the Bible. **3 credits.**

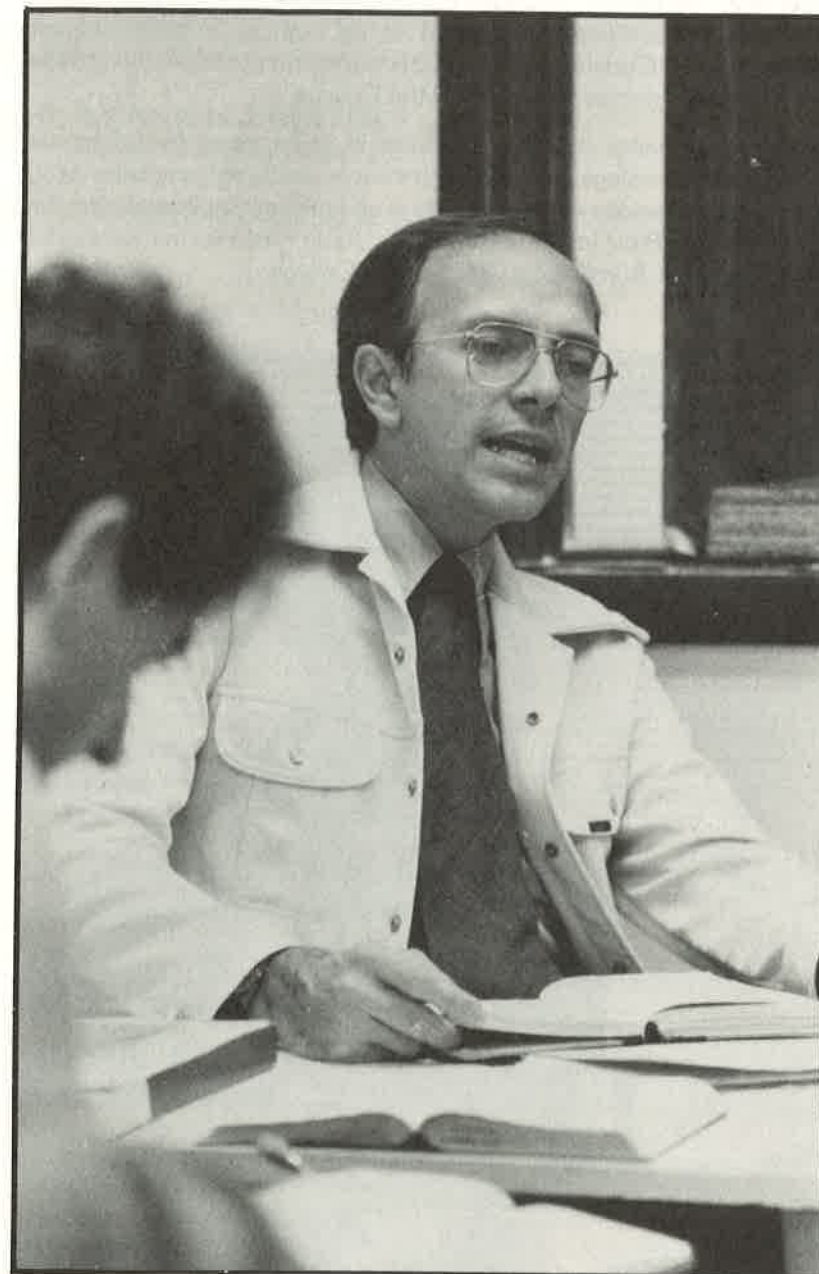
496, 498 PERFORMANCE ACTIVITY

Preparation and presentation of oral literature in a public production such as a Reader's Theater or a drama. Members of a technical crew (e.g. lighting, make-up, sound, and props) are also eligible for credit. A maximum of three credits may be applied toward graduation requirements. **1 or 2 credits each.**



*"Understanding is a wellspring of life
unto him that hath it. . ."*

Proverbs 16:22



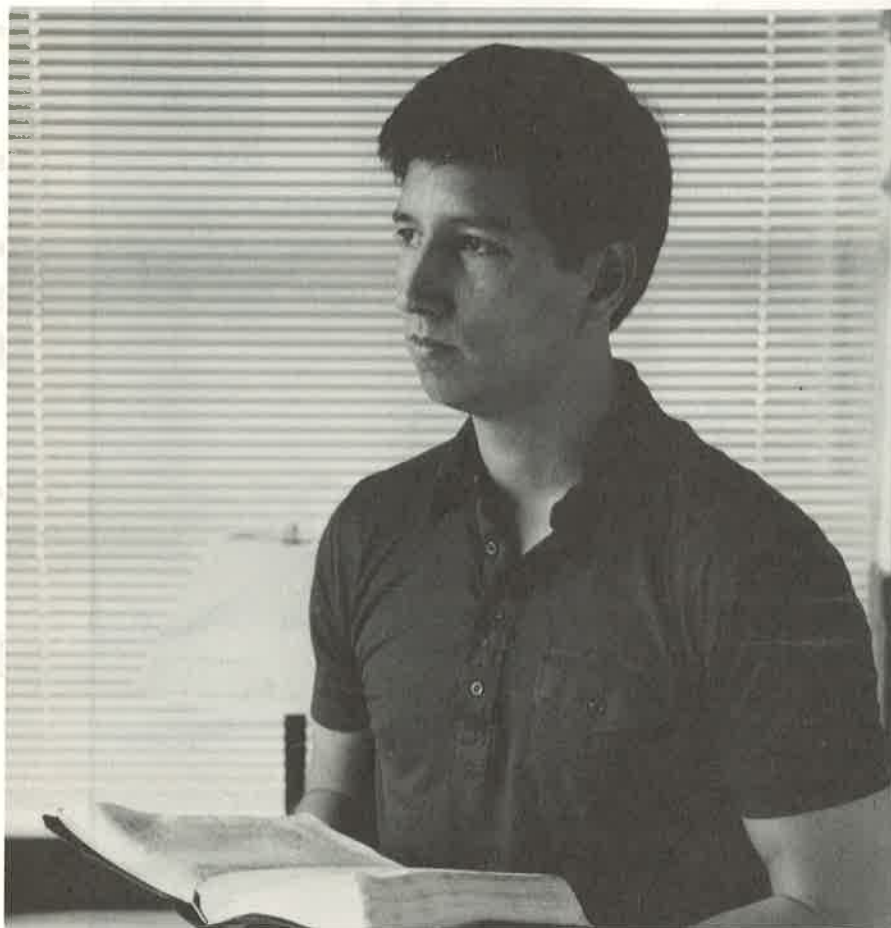
Evening Bible Institute

EVENING BIBLE INSTITUTE

Norman P. Spotts, Academic Director
Frank L. Snyder, Administrative Director

The Evening Bible Institute (EBI) provides an opportunity for Christian men and women to expand their Bible knowledge and achieve systematic training for Christian service. The planned program consists of 36 semester hours leading to a Bible Institute Certificate presented at the annual Commencement program of Clearwater Christian College. EBI courses do not apply toward the Associate or Bachelor degree programs of the College.

Certificate requirements can be completed in three years by taking six semester hours two evenings a week. Each course meets for one hour each week on Monday or Tuesday evening. There is no time limit for completing the course of study for the Bible Institute Certificate. Additional information can be obtained by writing the Admissions Office of the College.



EBI CERTIFICATE PROGRAM

COURSES

Semester Hours

I. BIBLE SURVEY

EBI-100 Old Testament Survey I	2
EBI-200 Old Testament Survey II	2
EBI-300 New Testament Survey	<u>2</u>
	6

II. BASIC BIBLE DOCTRINES

EBI-400 Bible Doctrines I	2
EBI-500 Bible Doctrines II	2
EBI-600 Bible Doctrines III	<u>2</u>
	6

III. BIBLE BOOK STUDIES

New Testament	
EBI-110 John	1
EBI-210 Romans	1
EBI-710 I, II, III John	1
EBI-610 Revelation	1
Old Testament	
EBI-310 Exodus	1
EBI-410 Isaiah	1
EBI-510 Daniel	<u>1</u>
	7

IV. BIBLICAL THEMES

EBI-120 Greek Word Studies	1
EBI-220 Biblical Customs and Practices	1
EBI-420 How We Got Our Bible	1
EBI-520 Why Believe The Bible	1
EBI-620 Vital Issues of the Hour	<u>1</u>
	5

V. EVANGELISM AND CHRISTIAN SERVICE

EBI-130 Speaking and Teaching Skills	1
EBI-230 Christian Counseling	1
EBI-330 Survey of Christian Education	1
EBI-430 Techniques in Teaching the Bible	1
EBI-530 Personal Evangelism	1
EBI-630 Contemporary Religions and Cults	<u>1</u>
	6

VI. CHRISTIAN LIVING

EBI-140 Christian Living—Adults	1
EBI-240 Christian Living—Children and Youth	1
EBI-340 Christian Living—Family	<u>1</u>
	3

VII. CHRISTIAN HISTORY AND GEOGRAPHY

EBI-440 Survey of Church History	1
EBI-540 Biblical Archaeology	1
EBI-640 Biblical Geography	<u>1</u>
	<u>3</u>
Total Hours:	36



"For the ways of man are before the eyes of the Lord, and He pondereth all his goings."

Proverbs 5:21



Personnel

BOARD OF DIRECTORS

Chairman: Orville Roark	CPA for State of Florida	St. Petersburg, FL
Vice Chairman: John Graham	Businessman	Orlando, FL
Sec/Treas:		
Alan Cockrell	Pastor	Temple Terrace, FL
George Youstra	CCC President	Clearwater, FL
Samuel Brooks	Pastor	Port Charlotte, FL
Dale Crowley	Radio Broadcaster	Largo, FL
William Dambach	Retired Banker	Clearwater, FL
Norman Pyle	Pastor	Riverdale, GA
David Norris	Dairy Farmer	Ellenton, FL
Don Vanostenberg	Retired Businessman	St. Petersburg, FL
Le Roy Scott	Educator	St. Petersburg, FL
Advisors: James Bauman	CCC—Exec. V.P.	Clearwater, FL
Arthur Steele	CCC President, Emeritus	Clearwater, FL
John Kruhmin	Retired CCC—V.P.	Clearwater, FL

CO-OPERATING BOARD

Michael Bates	Pastor	Riverview, FL
Gerald Bauman	Pastor	Traverse City, MI
Robert Biscoe	Exec. Secretary, ACCC	Valley Forge, PA
J.B. Buffington	Pastor	Lakeland, FL
Wayne Golson	Pastor	Oneco, FL
Richard Gregory	Pastor	Limerick, PA
Walter Handford	Pastor	Greenville, SC
Jerry Lancaster	Pastor	Largo, FL
Jack Murray	Evangelist	Hatfield, PA
Richard Prochnow	Pastor	Palm Harbor, FL
Trent Roark	Hospital Administrator	Largo, FL
Walter Rumminger	Builder	Greenville, S.C.
William Schroeder	Pastor	Oak Forest, IL
Robert Starner	Sales Representative	Lakeland, FL
Donald Tice	Pastor	Waukegon, IL
Donald Wood	Surgeon	La Grange, IL
Ronald Workman	Pastor	Carlock, IL

ADMINISTRATION

Dr. George Youstra, President

BS Bob Jones University, 1959, Secondary Education
MA Bob Jones University, 1961, Christian Education
MA Michigan State University, 1964, Social Science Education
Ph.D. Michigan State University, 1970, Teacher Education

Dr. Arthur Steele, President, Emeritis

BS Carnegie Mellon University, 1942, Chemical Engineering
M.Div. Faith Theological Seminary, 1959, Theology
D.D. Faith Theological Seminary, 1963

Dr. James Bauman, Executive Vice-President

BA Bryan College, 1969, History
J.D. Stetson University, College of Law, 1972, Law
Th.M Grace Theological Seminary, 1982, Theology

Dr. David Moore, Academic Dean

BA Clearwater Christian College, 1977, Secondary Education
MA University of South Florida, 1980, History
Ph.D. in progress, University of South Florida

Dr. Del Wubbena, Dean of Students, Athletic Director

BS Bob Jones University, 1965, Physical Education
MA Central Michigan University, 1973, Administration

Mr. Benjamin Puckett, Registrar and Director of Admissions

BA Clearwater Christian College, 1976, Secondary Education
MA University of Georgia, 1983, Administration



STAFF

Peter Traversa.....	Director of Financial Aid
Randy Starner.....	Director of Recruiting & Public Information
Karen Johnson.....	Dean of Women, Women's Residence Hall Supervisor
Lynn Smith.....	President's Secretary, Supervisor of Office Staff
Julie Keating.....	Bookkeeper
Brian Johnson.....	Director of Christian Service
Linda Pasch.....	Business Office Secretary
Ruth Russell.....	Bookstore Manager
David Altman.....	Men's Residence Hall Supervisor
Melanie Findley.....	Admissions Office Secretary
Connie Wubben.....	Campus Hostess/Receptionist
Betty Wellman.....	Financial Aid Secretary
Rev. Norman Spotts.....	Academic Director of Evening Bible Institute
Frank Snyder.....	Administrative Director of Evening Bible Institute
Hal Haller.....	Assistant Librarian
Adella Hitchens.....	Library Technical Assistant
Dr. Jean Macfarlane.....	Campus Nurse
Michael Werner.....	Campus Security
Bea Sawyer.....	Food Service Director
Mildred Bessey.....	Food Service Assistant
Beverly Mosher.....	Food Service Assistant
Ruth Gibbs.....	Food Service Assistant
Marion Morton.....	Food Service Assistant
Eva Nordquist.....	Food Service Assistant
Mike Nordquist.....	Food Service Assistant
Betty Stoika.....	Food Service Assistant

FACULTY

Mary Janelle Anderson, Associate Professor, English & Literature

BA Campbell College, 1964, English/Modern Language
MA Vanderbilt University, 1965, English
ABD Vanderbilt University, 1970, Comparative Literature

***Allan Bowman**, Associate Professor, Computer Science

BS Florida State University, 1969, Business Administration
MS Air Force Institute of Technology, 1975, Management

Barbara Burke, Assistant Professor, Physical Education

BS Western Michigan University, 1980, Physical Education & Coaching
M.Ed University of Tennessee at Chattanooga, 1984, Administration of Physical Education

Robert Carver, Associate Professor, Greek and Bible

BA Shelton College, 1965, Hebrew and Hellenistics
M.Div. Faith Theological Seminary, 1968, Theology

***Deborah Hamby**, Assistant Professor, Applied Music

BS Campbellsville (KY) College, 1973, Music
MCM Southern Baptist Theological Seminary, 1976, Church Music Administration

Walter E. Hatten, Chairman, Division of Education; Professor, Education

BS Bob Jones University, 1964, Secondary Education
MA University of Rhode Island, 1972, Adult Education
Sixth Year Certificate, University of Connecticut, 1976, School Administration
Ph.D. University of Connecticut, 1983, Curriculum and Instruction: Elementary Education

Brian Johnson, Assistant Professor, Education and History

BA Clearwater Christian College, 1974, Bible
BA Clearwater Christian College, 1976, History
MAT Jacksonville University, 1980, Social Studies Education

Elizabeth Knepper, Assistant Professor, Education

BA Clearwater Christian College, 1977, Bible
MA Georgia College, 1982, Early Childhood Education

***Carol Ladner**, Assistant Professor, Music

BM Baylor University, 1960, Sacred Music
MM University of South Florida, 1976, Voice
Ph.D. In Progress, Florida State University, Choral Music Instruction

***Eric Larson**, Assistant Professor, Special Education

BA University of South Florida, 1972, Mental Retardation Education
MA University of South Florida, 1977, Elementary Education Supervision
Ph.D. Baptist Christian University, 1982, Christian School Administration

Jean Macfarlane, Chairman, Division of Arts & Science; Professor, English and Literature

BA University of South Florida, 1969, English Education
MA University of South Florida, 1970, Humanities Education
Ph.D. University of Florida, 1980, English

James Morris, Professor, Psychology

BS University of Georgia, 1948, Psychology
MS Florida State University, 1949, Psychology
Ph.D. Florida State University, 1959, Psychology

Edward Oliver, Associate Professor, Bible

BA Shelton College, 1958, Social Studies
M.Div. Faith Theological Seminary, 1962, Theology
DD Shelton College, 1968

***William Pardee**, Professor, Bible

AB Calvin College, 1935, Education
BD Northern Baptist Theological Seminary, 1938
Th.M. Calvin Theological Seminary, 1942, Theology
Th.D. Northern Theological Seminary, 1948, Theology

Frank Snyder, Associate Professor, History and Economics

BS Clearwater Christian College, 1983, Business Administration
MA University of South Florida, 1986, History

Norman Spotts, Dean of Students Emeritus; Associate Professor, Bible and Theology

BA Bob Jones University, 1954, Bible
M.Div. Faith Theological Seminary, 1957, Theology

David Steele, Professor, Mathematics and Computers

BA Clearwater Christian College, 1971, Mathematics
MS University of South Florida, 1974, Mathematics
Ph.D. University of South Florida, 1983, Mathematics

Jonathan Steele, Assistant Professor, Music

BA Clearwater Christian College, 1974, Biblical Literature
MM University of South Florida, 1980, Music Theory
Ph.D. In Progress, University of Florida, College Teaching of Music

Ora M. Wellman, Chairman, Division of Business Studies; Professor, Business

BS Purdue University, 1947, Social Studies/Business-Economics
MA Indiana State University, 1961, Business Administration
Ph.D. Oklahoma University, 1975, Business Education/Economics/Business Administration

Elizabeth Werner, Librarian; Associate Professor, Spanish

BA Mills College, 1966, Spanish
MA Indiana University, 1968, Spanish
MLS University of Maryland, 1973, Library Science

Patricia W. Youstra, Associate Professor, Business Education

BS Bob Jones University, 1959, Business Education
MA Michigan State University, 1970, Business Education

*Part-time

INDEX

Academic Advising.....	31
Academic Division.....	64
Academic Progress and Probation.....	61
Administration.....	129
Admissions.....	28
Board of Directors/Co-operating Board.....	128
Calendars of Events.....	6-10
Campus Residence.....	22
Chapel.....	21
Christian Service.....	21
Class Attendance.....	33
Correspondence Credit Policy.....	38
Course Descriptions.....	95
Degrees Offered.....	56
Distinctives.....	18
Doctrinal Basis.....	16
Early Enrollment.....	32
Expenses for Full-time Students.....	40
Evening Bible Institute.....	123
Faculty.....	131
Financial Information.....	40
Expenses.....	40
Financial Aid.....	44
Foreign Students.....	30
General Education Requirements.....	57, 58
Grading System.....	59
Graduation Honors.....	60
Health Service.....	22
History of the College.....	14, 15
Library.....	26
Location.....	2, 3
Majors.....	63
English.....	65
Humanities.....	67
Psychology.....	68
Sacred Music.....	70
Bible.....	73
Biblical Literature.....	74
English Bible.....	75
Business Administration.....	77
Minor in Computer Information Systems.....	78
Secretarial Science.....	79
Preschool Education.....	81
Elementary Education.....	82
Minor in Special Education.....	83
Secondary Education.....	83-90
(Bible, Business, English, History, Mathematics, Physical Education, Social Studies)	
Music Education.....	91

Matriculation.....	31
Method of Payment.....	42
Purpose and Objectives of the College.....	16-17
Re-admission to the College.....	32
Refunds.....	43
Registration.....	31
Residence Halls.....	24
Scholastic Honors.....	60
Staff.....	130
Standard of Conduct.....	20
Student Classification.....	62
Table of Contents.....	11
Testing Program.....	35
Transfer Students.....	24
Withdrawal from College.....	32

TRANSCRIPT REQUEST FORM

To the Registrar or Principal of: _____

I hereby request a copy of my
() high school () college

transcripts to be sent directly to:

Director of Admissions
Clearwater Christian College
3400 Gulf to Bay Blvd.
Clearwater, FL 33519

Signature: _____ Date: _____

Vital Information:

Name (please print) _____

Address: _____

Social Security Number: _____

Year(s) attended: _____

Other name used (if applicable): _____

Registrar, please contact me at the above address if there is a fee owed or with any other complications with my request.

ATTACH
RECENT
PHOTOGRAPH
HERE

CLEARWATER CHRISTIAN COLLEGE Application for Admission

Individuals should read carefully the requirements for admission before completing this application. A non-refundable fee of \$15 should accompany this application. Please print clearly the information requested.

Anticipated term of entry: _____ Fall _____ Spring _____ Summer Session _____ of 19 _____

GENERAL INFORMATION

Full Legal Name: _____

Last

First

Middle

Maiden

Address: _____

Number/Street/Box/Apt

City

State

Zip

Mailing address: _____
(if different)

Number/Street/Box/Apt

City

State

Zip

Area Code/
Telephone: _____

Sex: _____

Male

Birthdate: _____

Female

Birthplace _____

Social Security
Number: _____

Marital Status: _____

Single, never married; _____ Married;

Divorced; _____ Widowed; _____ Separated; _____ Remarried

Parents/Guardian: _____ M/M _____ Mr. _____ Mrs. _____

Last

First

Middle Initial

Address: _____

Number/Street/Box/Apt

City

State

Zip

Telephone number

Is your father living? _____ Mother living? _____ With whom are you living? _____

Are you a citizen of the United States of America? _____ If not, in what country do you hold citizenship? _____

For statistical purposes only, indicate the ethnic group which best describes your racial background.

_____ American Indian/Alaskan Native; _____ Asian/Pacific Islander;

_____ Black, Non-Hispanic; _____ Hispanic; _____ White, Non-Hispanic

Have you ever been enlisted with the Armed Services? _____ If yes, give the date and nature of your separation. Date of Separation: _____

Nature: _____ Honorable _____ Other (specify on separate sheet)

Are you under the supervision of a parole officer or court? _____ If yes, specify on separate sheet of paper.

Do you have a police record? _____ If yes, give nature of offences and explain on a separate sheet of paper. _____

Explain any physical or mental disability which may prevent you from leading a normal College life: _____

Upon acceptance into the College, you will be required to complete a Medical Report Form which will be forwarded to you with the acceptance letter. This form requests specific medical history and provides a reporting area for a physician to submit findings from a physical examination. The Medical Report Form and examination must be completed within six months of the student's date of anticipated enrollment. Non-degree seeking students may receive a waiver of the examination requirement upon request.

Do you plan to reside in the College residence halls? _____

Yes _____ No

Students below the age of twenty-five who do not reside with parents or close family relations are required to live in the College residence halls.

How did you first become interested in Clearwater Christian College and why are you seeking admission into our institution? _____

Clearwater Christian College
3400 Gulf to Bay Boulevard
Clearwater, Florida 33819