

Clearwater Christian College...
a college with a purpose



RE

5-87

1985 - 87 Catalog

JANUARY										APRIL										JULY										OCTOBER									
S	M	T	W	T	F	S	S	M	T	W	T	F	S	S	M	T	W	T	F	S	S	M	T	W	T	F	S												
		1	2	3	4	5		1	2	3	4	5	6		1	2	3	4	5	6		1	2	3	4	5	6												
6	7	8	9	10	11	12	7	8	9	10	11	12	13	7	8	9	10	11	12	13	6	7	8	9	10	11	12												
13	14	15	16	17	18	19	14	15	16	17	18	19	20	14	15	16	17	18	19	20	13	14	15	16	17	18	19												
20	21	22	23	24	25	26	21	22	23	24	25	26	27	21	22	23	24	25	26	27	20	21	22	23	24	25	26												
27	28	29	30	31			28	29	30					28	29	30	31				27	28	29	30	31														

FEBRUARY										MAY										AUGUST										NOVEMBER									
S	M	T	W	T	F	S	S	M	T	W	T	F	S	S	M	T	W	T	F	S	S	M	T	W	T	F	S												
					1	2			1	2	3	4						1	2	3						1	2												
3	4	5	6	7	8	9	5	6	7	8	9	10	11	4	5	6	7	8	9	10	3	4	5	6	7	8	9												
10	11	12	13	14	15	16	12	13	14	15	16	17	18	11	12	13	14	15	16	17	10	11	12	13	14	15	16												
17	18	19	20	21	22	23	19	20	21	22	23	24	25	18	19	20	21	22	23	24	17	18	19	20	21	22	23												
24	25	26	27	28			26	27	28	29	30	31	25	26	27	28	29	30	31	24	25	26	27	28	29	30													

MARCH										JUNE										SEPTEMBER										DECEMBER									
S	M	T	W	T	F	S	S	M	T	W	T	F	S	S	M	T	W	T	F	S	S	M	T	W	T	F	S												
					1	2						1	1			1	2	3	4	5	6	7			1	2	3	4	5	6	7								
3	4	5	6	7	8	9	2	3	4	5	6	7	8	8	9	10	11	12	13	14	8	9	10	11	12	13	14												
10	11	12	13	14	15	16	9	10	11	12	13	14	15	15	16	17	18	19	20	21	15	16	17	18	19	20	21												
17	18	19	20	21	22	23	16	17	18	19	20	21	22	22	23	24	25	26	27	28	22	23	24	25	26	27	28												
24	25	26	27	28	29	30	23	24	25	26	27	28	29	29	30						29	30	31																
31							30																																

JANUARY							APRIL							JULY							OCTOBER									
S	M	T	W	T	F	S	S	M	T	W	T	F	S	S	M	T	W	T	F	S	S	M	T	W	T	F	S			
				1	2	3	4				1	2	3	4	5				1	2	3	4	5				1	2	3	4
5	6	7	8	9	10	11	6	7	8	9	10	11	12	6	7	8	9	10	11	12	5	6	7	8	9	10	11			
12	13	14	15	16	17	18	13	14	15	16	17	18	19	13	14	15	16	17	18	19	12	13	14	15	16	17	18			
19	20	21	22	23	24	25	20	21	22	23	24	25	26	20	21	22	23	24	25	26	19	20	21	22	23	24	25			
26	27	28	29	30	31	27	28	29	30	27	28	29	30	31	26	27	28	29	30	31	26	27	28	29	30	31				

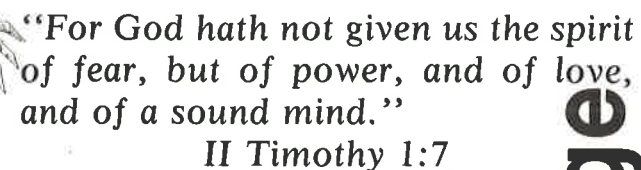
FEBRUARY							MAY							AUGUST							NOVEMBER						
S	M	T	W	T	F	S	S	M	T	W	T	F	S	S	M	T	W	T	F	S	S	M	T	W	T	F	S
						1					1	2	3						1	2							1
2	3	4	5	6	7	8	4	5	6	7	8	9	10	3	4	5	6	7	8	9	2	3	4	5	6	7	8
9	10	11	12	13	14	15	11	12	13	14	15	16	17	10	11	12	13	14	15	16	9	10	11	12	13	14	15
16	17	18	19	20	21	22	18	19	20	21	22	23	24	17	18	19	20	21	22	23	16	17	18	19	20	21	22
23	24	25	26	27	28	25	26	27	28	29	30	31	24	25	26	27	28	29	30	23	24	25	26	27	28	29	
													31							30							

MARCH							JUNE							SEPTEMBER							DECEMBER						
S	M	T	W	T	F	S	S	M	T	W	T	F	S	S	M	T	W	T	F	S	S	M	T	W	T	F	S
						1	1	2	3	4	5	6	7							1							1
2	3	4	5	6	7	8	8	9	10	11	12	13	14	7	8	9	10	11	12	13	7	8	9	10	11	12	13
9	10	11	12	13	14	15	15	16	17	18	19	20	21	14	15	16	17	18	19	20	14	15	16	17	18	19	20
16	17	18	19	20	21	22	22	23	24	25	26	27	28	21	22	23	24	25	26	27	21	22	23	24	25	26	27
23	24	25	26	27	28	29	29	30	28	29	30			28	29	30			28	29	30	31	28	29	30	31	

JANUARY							APRIL							JULY							OCTOBER							
S	M	T	W	T	F	S	S	M	T	W	T	F	S	S	M	T	W	T	F	S	S	M	T	W	T	F	S	
					1	2	3				1	2	3	4				1	2	3	4					1	2	3
4	5	6	7	8	9	10	5	6	7	8	9	10	11	5	6	7	8	9	10	11	4	5	6	7	8	9	10	
11	12	13	14	15	16	17	12	13	14	15	16	17	18	12	13	14	15	16	17	18	11	12	13	14	15	16	17	
18	19	20	21	22	23	24	19	20	21	22	23	24	25	19	20	21	22	23	24	25	18	19	20	21	22	23	24	
25	26	27	28	29	30	31	26	27	28	29	30			26	27	28	29	30	31		25	26	27	28	29	30	31	

FEBRUARY							MAY							AUGUST							NOVEMBER						
S	M	T	W	T	F	S	S	M	T	W	T	F	S	S	M	T	W	T	F	S	S	M	T	W	T	F	S
1	2	3	4	5	6	7						1	2						1		1	2	3	4	5	6	7
8	9	10	11	12	13	14	3	4	5	6	7	8	9	2	3	4	5	6	7	8	8	9	10	11	12	13	14
15	16	17	18	19	20	21	10	11	12	13	14	15	16	9	10	11	12	13	14	15	15	16	17	18	19	20	21
22	23	24	25	26	27	28	17	18	19	20	21	22	23	16	17	18	19	20	21	22	22	23	24	25	26	27	28
							24	25	26	27	28	29	30	23	24	25	26	27	28	29	29	30					
							31							30	31												

MARCH							JUNE							SEPTEMBER							DECEMBER								
S	M	T	W	T	F	S	S	M	T	W	T	F	S	S	M	T	W	T	F	S	S	M	T	W	T	F	S		
1	2	3	4	5	6	7	1	2	3	4	5	6				1	2	3	4	5					1	2	3	4	5
8	9	10	11	12	13	14	7	8	9	10	11	12	13	6	7	8	9	10	11	12	6	7	8	9	10	11	12		
15	16	17	18	19	20	21	14	15	16	17	18	19	20	13	14	15	16	17	18	19	13	14	15	16	17	18	19		
22	23	24	25	26	27	28	21	22	23	24	25	26	27	20	21	22	23	24	25	26	20	21	22	23	24	25	26		
29	30	31					28	29	30					27	28	29	30				27	28	29	30	31				



Membership: National Christian College Athletic Association; Florida Christian College Conference; Orange Belt League; Tampa Bay Library Consortium

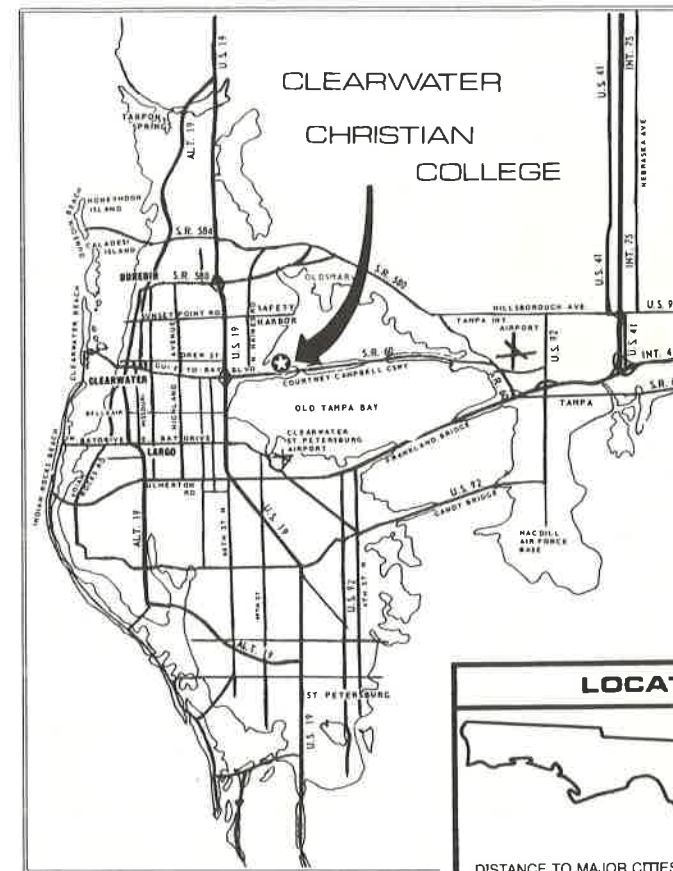
3400 Gulf-to-Bay Boulevard • Clearwater, Florida 33519

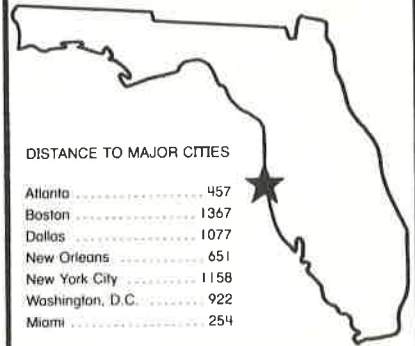
LOCATION

Clearwater, Florida is located halfway down the Florida peninsula on the west coast. It is adjacent to St. Petersburg and just across Tampa Bay from the city of Tampa. The entrance to the College is on Route 60, the main highway between Tampa and Clearwater. This is also known as the Courtney Campbell Causeway. The College is within sight of the Tampa International Airport. The 50 acre campus is situated on Tampa Bay which is the eastern boundary of the city of Clearwater. The western boundary of the city is the Gulf of Mexico.

The College is ideally situated for a Christian liberal arts college. The location in a cluster of towns provides many areas of Christian service in the fundamental, separated, and soul-winning churches. There are also many opportunities for employment for students in small industries and shopping centers. This part of Florida is fast becoming the tourist center of the state of Florida. The greater metropolitan west coast area also provides opportunities for graduate studies for faculty and graduates.

The city of Clearwater is referred to by the Chamber of Commerce as "Sparkling Clearwater." This is not only because of the fine beaches and water attractions, but also because the city is a clean and friendly city. The College is located one and one half hours driving time from Disney World. The College maintains an apartment and some guest facilities for visitors who would like to learn more about the College while they are in the area to enjoy the Florida sun and many other attractions. We invite pastors, parents, prospective students, and others to visit the campus as our guests.



LOCATION	
	
DISTANCE TO MAJOR CITIES	
Atlanta	457
Boston	1367
Dallas	1077
New Orleans	651
New York City	1158
Washington, D.C.	922
Miami	254



A message from the president:

"We are ambassadors for Christ"; so stated the Apostle Paul. He was a man greatly used by the Lord. We can also say with him that our purpose is preparing ambassadors—men and women God can use.

At Clearwater Christian College academic excellence is stressed. Our desire is that graduates be effective witnesses for the Lord, not only in churches, in Christian schools, on mission fields, but in every walk of life. So-called secular fields of work are not secular for the Christian; instead, they are fields for witness and service. We believe that every graduate should be concerned about lost souls and have a love for those who are saved. We believe that the basic solution to the problems in our nation and in our world is "the Lamb of God that taketh away the sin of the world." (John 1:29)

Part of the total program of the College is the spiritual and character development of our students. They are equipped to discern unbelief and sin which creep into our churches, institutions, and homes. As true soldiers of the cross, Clearwater students are expected to effectively oppose the world and those who have rejected the authority and inerrancy of God's Word.

We commend Clearwater Christian College, its board, administration, faculty, staff, and student body to pastors, parents and friends for prayer and support. We invite prospective students to prayerfully consider the unique program and emphasis of the College.

Yours in His Faithfulness,

Arthur E. Steele
President

TABLE OF CONTENTS

INTRODUCTION	1
PURPOSE AND OBJECTIVES	9
STUDENT LIFE	15
ADMISSIONS AND MATRICULATION	23
FINANCIAL INFORMATION	31
ACADEMIC INFORMATION	39
PROGRAMS OF INSTRUCTION (Majors)	47
Bible	50
Biblical Literature	51
English Bible	52
Business Administration	54
Computer Programming	56
Secretarial Science	57
Preschool Education	59
Elementary Education	61
Secondary Education	62-66
Music Education	67
Physical Education	69
Psychology	70
English	72
Music	74
COURSE DESCRIPTIONS	75
EVENING BIBLE INSTITUTE	105
PERSONNEL	109
APPLICATION PROCEDURES	119



**1985-1986
CALENDAR OF EVENTS**

FALL SEMESTER		August 29 - December 19	1985
Aug	23	Faculty Workshop	
	25	Dorms open, new students arrive	
	26-27	Orientation, advising, testing; returning students arrive	
	28	Registration (in morning)	
	29	Classes begin	
	30	Convocation	
Sep	2	Labor Day (classes meet)	
	6	Last day to drop/add	
	9-13	Christian Life Conference	
	13	Last day for late registration	
Oct	16	Day of Prayer	
	21-25	Mid-term week	
Nov	7-9	Weekend-at-College	
	28-Dec 1	Thanksgiving Break	
Dec	2-6	Advising for Spring Semester	
	13	Christmas Banquet, classes end	
	16-19	Final Exams (dorms close Dec 19)	
	23	All grades due in office by noon	
	20-Jan 5	Christmas Holidays (offices open except Dec 24, 25, Jan 1)	

SPRING SEMESTER		January 8 - May 3	1986
Jan	5	Dorms open, new students arrive	
	6	Orientation, advising, testing; returning students arrive	
	7	Registration (in morning)	
	8	Classes begin	
	17	Last day to drop/add	
	24	Last day for late registration	
	27-31	Missionary Conference	
Feb	11	Work Day	
	13-15	Weekend-at-College	
	24-28	Mid-term-week	
Mar	17	Founders' Banquet	
	19	Day of Prayer	
	27-31	Easter Break (no classes)	
Apr	7-11	Advising for Summer and Fall semesters	
	25	Classes end	
	26	Awards Banquet	
	28-May 1	Final Exams	
May	2	Seniors' grades due in office by noon;	
		Baccalaureate-7:30 p.m.	
	3	Commencement-11:00 a.m. (dorms close)	
	7	All grades due in office by noon	
	8	Faculty Workshop	

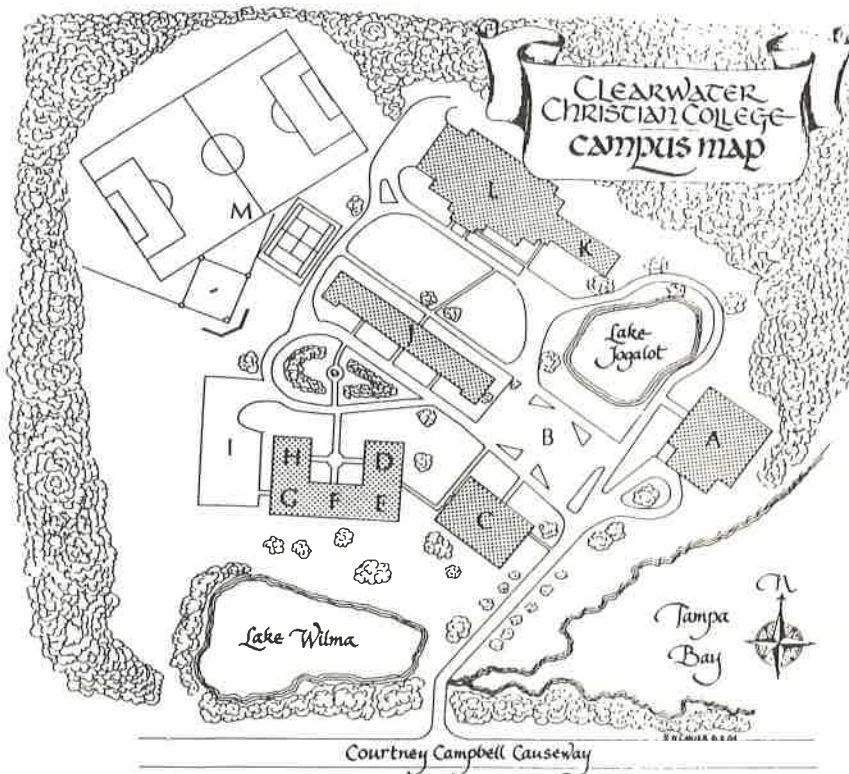
SUMMER SESSIONS		May 9 - 30/June 13 - July 3	1986
May	9	Registration; classes begin, Session I	
	26	Memorial Day observed (no classes)	
	30	Last day of classes, final exams	
June	2	All grades due in office by noon	
	13	Registration; classes begin, Session II	
July	3	Last day of classes, final exams	
	7	All grades due in office by noon	

**1986-1987
CALENDAR OF EVENTS**

FALL SEMESTER		August 28 - December 18	1986
Aug	22	Faculty Workshop	
	24	Dorms open, new students arrive	
	25-26	Orientation, advising, testing; returning students arrive	
	27	Registration (in morning)	
	28	Classes begin	
	29	Convocation	
Sep	1	Labor day (classes meet)	
	5	Last day to drop/add	
	8-12	Christian Life Conference	
	12	Last day for late registration	
Oct	15	Day of Prayer	
	20-24	Mid-term week	
Nov	6-8	Weekend-at-College	
	27-30	Thanksgiving Break	
Dec	1-5	Advising for Spring Semester	
	12	Christmas Banquet, classes end	
	15-18	Final Exams (dorms close Dec 18)	
	23	All grades due in office by noon	
	19-Jan 4	Christmas Holidays (offices open except Dec 24, 25, Jan 1)	

SPRING SEMESTER		January 7 - May 2	1987
Jan	4	Dorms open, new students arrive	
	5	Orientation, advising, testing; returning students arrive	
	6	Registration (in morning)	
	7	Classes begin	
	16	Last day to drop/add	
	23	Last day for late registration	
	26-30	Missionary Conference	
Feb	10	Work Day	
	12-14	Weekend-at-College	
	23-27	Mid-term week	
Mar	4-8	Spring Break	
	16	Founders' Banquet	
	18	Day of Prayer	
Apr	6-10	Advising for Summer and Fall semesters	
	17-19	Good Friday-Easter Weekend (no classes)	
	24	Classes end	
	25	Awards Banquet	
	27-30	Final Exams	
May	1	Seniors' grades due in office by noon;	
		Baccalaureate-7:30 p.m.	
	2	Commencement-11:00 a.m. (dorms close)	
	6	All grades due in office by noon	
	7	Faculty Workshop	

SUMMER SESSIONS		May 8-29/June 15 - July 3	1987
May	8	Registration; classes begin, Session I	
	25	Memorial Day observed (no classes)	
	29	Last day of classes, final exams	
June	1	All grades due in office by noon	
	15	Registration; classes begin, Session II	
July	3	Last day of classes, final exams	
	6	All grades due in office by noon	



- | | |
|--|--|
| <p>A - CATHCART HALL — Main receiving area of campus visitors. First floor - student mailboxes and College dining area. Second floor - Administrative offices (President's, Business, Dean of Students) and classrooms, CH 201-203</p> <p>B - CATHCART PARKING — Parking for administration, staff and campus visitors. Area closest to Emmons Hall is reserved for resident students living in that dorm.</p> <p>C - COLLEGE LIBRARY — Educational media room and classroom, L-4</p> <p>D - CAMPUS CHAPEL</p> <p>E - FACULTY OFFICES AND RECEPTION AREA</p> <p>F - ADMISSIONS, FINANCIAL AID, AND ACADEMIC DEAN'S OFFICES</p> <p>G - STUDENT LOUNGE</p> | <p>H - CLASSROOM SUITE — Computer/Science labs; West Classroom, (W)</p> <p>I - STUDENT PARKING — Area reserved for commuting students and additional space for Emmons Hall residents.</p> <p>J - EMMONS HALL — Units A, B, G-L are dormitory suites for female resident students; Unit F - Christian Service office; Unit E - Music Department; Unit D - Faculty offices. These offices are located on the 1st floor of the west end of the building.</p> <p>K - MEN'S DORMITORY — Parking available on the paved portion in front or the grassed area on the east end.</p> <p>L - GYMNASIUM — Offices for Athletic Department and classroom, G-1</p> <p>M - ATHLETIC FIELDS AND CAMPUS TENNIS COURT</p> |
|--|--|



“. . .that men may know that thou, whose name alone is Jehovah, art the most high over all the earth.”

Psalm 83:18



Purpose and Objectives

HISTORY OF THE COLLEGE

Clearwater Christian College began with a burden in the hearts of the founders concerning the trends in evangelical colleges away from Biblical standards of morality and from the historic Biblical fundamentals. The founders also perceived a growing casual attitude toward doctrine, and a lack of emphasis on personal soul-winning. They were burdened about the general apathy in Christian colleges toward unbelief as expressed in such activities as the ecumenical movement, new evangelism, and ecumenical evangelism.

In July, 1965, the possibility of establishing a Christian college on the west coast of Florida came closer to reality after an exploratory trip to Florida by Dr. Arthur E. Steele. This was followed by a year of calling on pastors in the area and surveying the possibilities of and the need for a Christian college. The area appeared to be ideal because of the great number of fundamental churches and opportunities for student Christian service, employment, and graduate study. Dr. Steele then moved his family to this area. Many friends made themselves available to help in the founding of this College. Through church contacts, the Lord supplied the architect, the general contractor, the building superintendent, and the owner of the land. The College acquired 50 beautiful waterfront acres at the eastern entrance to the city of Clearwater.

The Lord's hand was evident in every phase of the beginning of the College which was incorporated on January 18, 1966. In April, 1966, the I.R.S. approved the College as a tax exempt institution. Construction began on the first two buildings in the summer of 1966, with completion at the end of the year. The Clearwater Bible Church graciously invited the College to begin classes in its buildings until the College buildings were completed.

On September 17, 1966, fifteen students enrolled as the first class of Clearwater Christian College. The Lord providentially supplied funds, friends, faculty, facilities, and a promising student body. The great enthusiasm and sense of expectancy during that first year has continued through the years of our history.

The library building was completed in April, 1970. The men's dormitory building was completed in October, 1974. The auditorium/gymnasium was completed in 1978. In September, 1983, the new multi-purpose Cathcart Hall was dedicated. This structure houses the College's cafeteria, as well as numerous offices and classrooms on the second floor. Funds for this building were provided through the generous gift of Mr. & Mrs. Harold P. Paden of Alexandria, Virginia.

The College was approved in September, 1980 by the U.S. Department of Education to receive Pell Grants and Guaranteed Student Loans for students who qualify to receive the benefits. After years of

preparation, the College received regional accreditation by the Commission on Colleges of the Southern Association of Colleges & Schools in December, 1984. This recognition by a secular nongovernmental agency signifies academic excellence and scholarship on a par with secular colleges and universities. That the College has become regionally accredited should not be construed as a retreat from its historic position on doctrinal issues or its high standards of personal conduct.

Through the years the College "family" has seen the Lord provide miraculously for the continuance of this ministry. We believe this provision is due in no small part to the position the College has taken against doctrinal extremes, apostasy, and error, and its full commitment to the fundamentals of the historic Christian faith. Clearwater Christian College began in the will of the Lord through much prayer and will continue to operate seeking His guidance, protection, and provision.



PURPOSE

The essential purpose of Clearwater Christian College as an undergraduate institution is to assist in the academic and spiritual development of the personal character of students by providing a quality education in the arts and sciences, using an integrated understanding of the Bible to make judgments and establish priorities in the world around us.

DOCTRINAL BASIS

As stated in the Constitution

We believe and maintain the following:

- a. The Plenary Divine inspiration of the Scriptures in the original languages; their consequent inerrancy and infallibility; and as the Word of God, their supreme and final authority in faith and life.
- b. The triune God: Father, Son, and Holy Spirit.
- c. The essential, absolute, eternal Deity; and the real and proper, but sinless, humanity of our Lord Jesus Christ.
- d. His birth of the Virgin Mary.
- e. His substitutionary, expiatory death, in that He gave His life "a ransom for many."
- f. His resurrection from among the dead in the same body in which He was Crucified, and the imminent and premillennial bodily return of Jesus Christ in glory to this earth.
- g. The total depravity of man through the Fall.
- h. Salvation, the effect of regeneration by the Spirit and the Word, not by works but by grace through faith.
- i. The everlasting bliss of the saved and the everlasting suffering of the lost.
- j. The real spiritual unity in Christ of all redeemed by His precious blood.
- k. The necessity of maintaining, according to the Word of God, the purity of the Church in doctrine and life.

OBJECTIVES

1. To create in each student a desire to know God, His attributes, His attitude toward sin and unbelief, and His instructions for the Christian as revealed in the Bible.
2. To help the student understand the strategy of Satan as it is expressed in false cults and modern religious movements, and to understand the Scriptural teaching concerning ecclesiastical separation from apostasy.
3. To help each student to know and understand the Biblical account of special creation and to know and be able to answer the non-Biblical theories of the origin of man and the universe.
4. To help each student recognize (1) his responsibility to witness to others concerning their need of personal salvation through Jesus Christ and (2) his responsibility for their social needs.
5. To develop the character of the student through good work and study habits, through understanding of moral and social standards, and through cultural enrichment.
6. To help each student understand the importance and the Biblical framework of his individual courses and their relevance to his chosen field or profession.
7. To strive for academic excellence; to excell in every area of the student's college life; and to show the importance of excellence for effective Christian service.
8. To help each student understand the importance of gaining a knowledge of the academic disciplines that are characteristic of a liberal arts college.
9. To help the student maintain a high level of interest and proficiency in his chosen ministry, field, or profession, and provide spiritual counselling concerning God's leadership in his life.
10. To develop the student's ability to analyze, to investigate, to respond to ideas, and to test hypotheses in evaluation situations so that he can arrive at conclusions in the light of all available truth.
11. To help the student gain insight and understanding of the foundations which have made our nation great and which have provided the framework of freedom wherein this form of education can be successfully consummated.

DISTINCTIVES

DEFENSE OF THE FAITH

Inasmuch as doctrinal soundness has declined alarmingly in 20th century churches and schools throughout the world, Clearwater Christian College, its board, and faculty, stand committed to a program of instruction designed to inform its scholars of

1. the importance of maintaining personal allegiance to the "whole council of God" as given in the Bible;
2. the need of informing others of the danger in theologies and philosophies which deviate from scriptural soundness;
3. the very great importance of learning how and why this great decline in the true faith has taken place.

To accomplish these ends the College requires all students to take a course in modern religious issues in which the conditions of the contemporary church world are studied and interpreted.

EVANGELISM

The Lord's commission to evangelize and teach all nations is reflected in all phases of the four-year college program at Clearwater. Students are reminded constantly that they are ambassadors of the King, commissioned primarily to propagate the saving Gospel of Jesus Christ. The majors they choose in the liberal arts become the open doors to fields of contact for Christ. The objectives at Clearwater are different from those in secular schools. Our prayers are that students will be brought closer to the Lord while at Clearwater Christian College and graduate with a love for souls.

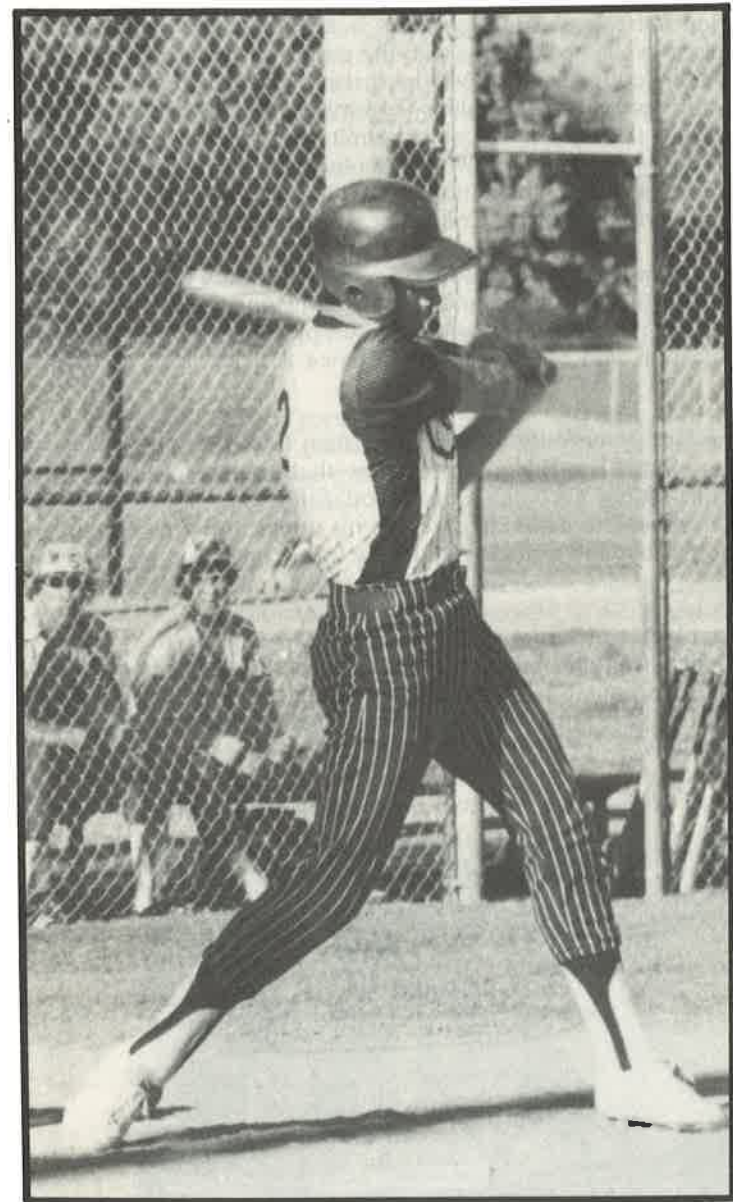
PATRIOTISM

Clearwater Christian College stands in the historic tradition of the early colleges of our land and believes that the greatness of our nation is directly attributable to the honored place the Word of God had in the lives and thinking of our forebears. Students learn authentic American history at Clearwater. The Constitution of the United States and its Bill of Rights are studied and understood as the framers of these freedom documents gave them to us. Students understand that the right to private ownership of property and competitive free-enterprise are Scriptural. They consequently understand the peril to our American way of life and to any nation that forgets God and ignores His commandments. Also presented is a clear explanation, in the light of Scripture, of humanism, and other forces and trends which erode the rights and blessings God intends for man.



"Let the words of my mouth, and the meditation of my heart, be acceptable in thy sight, O Lord, my strength, and my redeemer."

Psalm 19:14



Student Life

Standard of Conduct

Clearwater Christian College bases its standard of conduct on Biblical principles. Students are subject to the discipline of the College for the duration of their enrollment. Before Registration, students are required to familiarize themselves with the rules and regulations set forth in the **Student Handbook** and College Catalog, and agree to abide by the standards of Clearwater Christian College.

A student whose personal conduct is a poor testimony for Christ and who fails to live in accordance with the scriptural ideals of the College will be spiritually counseled and will be disciplined to such extent as the Dean of Students or the Discipline Committee deems advisable. The College reserves the right to refuse to admit, to put on disciplinary probation, or to dismiss any student whose personal conduct and/or attitude in the judgment of the administration are not consistent with the Christian spirit and standards which the College seeks to maintain.

Attendance at Clearwater Christian College is made possible by gifts from Bible-believing Churches and sacrificial giving of individuals. Students should be mindful of those who have provided most of the cost of their education and realize that attendance is a privilege and not a right.

It is the God-given duty of every Christian to bear witness daily for Christ to the world. The Bible admonishes "that ye present your bodies a living sacrifice, holy, acceptable unto God..." It is then, every believer's "reasonable service" to examine carefully his public and private conduct that in all points, by God's grace, he may be found faithful in his Christian testimony.

Local Church Attendance

The College requires every student to faithfully attend and support one of the fundamental, Bible-believing churches in our area. Students are required to verify their attendance at weekly services of such a church. The College dorm residents attend a Wednesday evening prayer meeting on campus unless they are excused to attend services at their own churches. No services are held on campus on Sundays.



Midweek Prayer Service

Midweek Prayer Service is conducted by resident students on Wednesday evenings throughout the school year. This is an opportunity for students headed for the ministry to gain experience expounding the Word of God. This service is required for all resident students unless excused to attend services in their own churches.

Chapel

The daily chapels are an important part of the college program. Students participate in the musical portions of these services, with the president of the College and members of the faculty presenting Bible messages that bear on the issues and concerns of the day. The College is also fortunate in being able to invite to Chapel capable and spiritual pastors from the area as well as visiting evangelists, missionaries, and Bible conference speakers.

Christian Service

Clearwater Christian College arranges and sponsors various Christian Service assignments in the surrounding communities. Each student is required to participate in some activity during each semester at the College.

Christian Service is considered a non-credit course for which satisfactory or unsatisfactory grades will appear on the transcripts. Students receiving an unsatisfactory grade will meet with the Dean of Students and the Director of Christian Service to receive counsel and to plan improvement.

Students of Clearwater Christian College will be reminded frequently of the importance of their involvement in Christian Service activities. It is the prayer of the board and faculty that many students will feel led to the pastorate or the mission field while at the College. The Christian student must realize that the primary mission, wherever the Lord leads, is to witness a saving knowledge of Jesus Christ. We are His ambassadors.

Extracurricular Activities

Students are encouraged to participate in extracurricular activities for their own development—mental, social, and physical. The Athletic Director encourages participation in intramural sports in addition to the regular athletic programs organized by the Christian colleges in the area.

Intercollegiate Sports

Clearwater Christian College is a member of the Florida Christian College Conference, the Florida-based Orange Belt League, and the National Christian College Athletic Association. The College affords students a full complement of intercollegiate sports including women's volleyball, basketball, and softball and men's soccer, basketball, and baseball.



Health Services

A physical examination is required of all new students prior to enrollment. Exceptions are made for special non-degree seeking students. The College provides a medical form to be used by the student and his physician.

Clearwater Christian College cannot accept the responsibility for illnesses or accidents on or off campus or in sporting activities. Students use College facilities and participate in College-related activities at their own risk. Jean Macfarlane, R.N., Ph.D., acts as nurse on call and arranges for doctor's appointments when necessary. A low cost student health insurance plan is available to all full-time students.

Campus Residence

Accommodations for students are provided on campus in separate, modern, well-equipped women's and men's residence halls. Apartments for dorm parents are located in both the women's and men's residences. The dorm parents are responsible to the Dean of Students for discipline and control in the dormitories.

All students under the age of 25 are required to live on campus unless they are married or live with their parents, grandparents, or guardians. In the event that space is not available in the student residence,

outside housing may be arranged by upperclassmen with permission. No married or divorced students will be permitted to live in the dormitories.

The College has no accommodations for married students at the present. The Admissions Office will assist in obtaining off-campus housing if requested.

Students are permitted to live in residence halls only after agreeing to the provisions governing dormitory living as stated in the **Student Handbook** and on their applications for admission.

Students taking less than twelve hours are considered part-time and must receive permission from the Dean of Students to live on campus.

A pre-registration room deposit of \$50, which is applied against rental, is necessary. This should be paid as soon after acceptance as possible, but not later than August 15 for the Fall semester, or December 15 for the Spring semester. Rooms not occupied by the day of registration will be reassigned, and the deposit will be forfeited.

Campus Facilities

Dambach Hall

The oldest and most familiar structure on the Clearwater Christian College campus, this building has recently been partially remodeled to accommodate our growth. Dambach Hall, named after a longtime friend and supporter of the College, houses the admissions and faculty offices, bookstore, student lounge, science laboratory, computer science laboratory, music room, and chapel. The mall area is appointed with an attractive fountain which was a gift to the College from the Class of 1983.



Emmons Hall

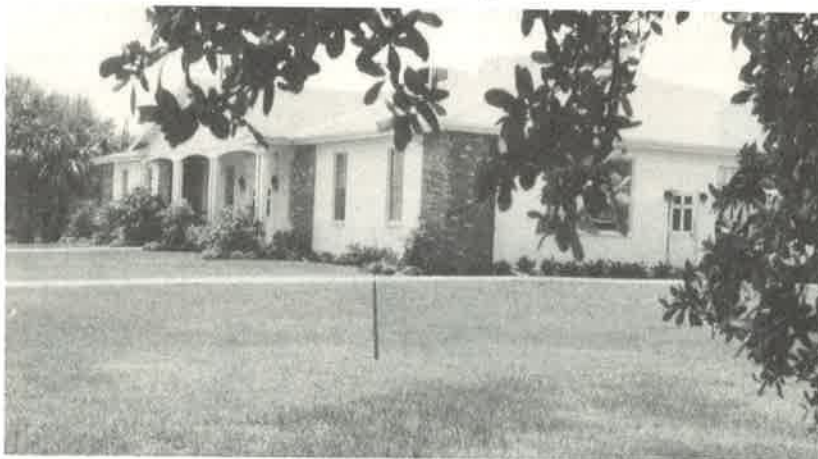
The women's residence employs a unique design for family-style living. Each unit has a carpeted living room, four bedrooms, and a bathroom. The bedrooms are provided with a window shade and window

rods for drapes and curtains. The students are required to furnish drapes or curtains and bedspreads for the room. Small rugs may be brought if desired. Students should also bring a desk lamp, bed and bath linens, blankets, and a pillow. A coin-operated laundry is available on campus for student use.



College Library

The library dedicated in April 1970, currently houses over 40,000 volumes and receives 160 periodicals regularly. Books are cataloged according to the Library of Congress System. Shelf space has recently been enlarged to accommodate a growing collection. The library is open for use by students six days a week throughout the school year.



Gymnasium/Men's Dormitory

This double facility is the largest single edifice on the campus. The gymnasium's 12,000 square feet hardwood floor is the site of all home indoor athletic contests. The basketball court is equipped with six backboards, bleachers, and a sound system. On the east end of the court is

a stage which is used when the gymnasium is transformed into an auditorium. This arena serves well when needed for banquets and special occasions including Baccalaureate and Commencement.

The east wing of this structure is a two-story men's dormitory. The appointments for each of the 26 "hotel style" air conditioned rooms include carpet, full furnishings, a sink, and two walk-in closets.



Cathcart Hall

This multi-purpose building faces beautiful Tampa Bay. A new 250 seat cafeteria and kitchen occupies the first floor. Student post office boxes are situated in the lobby. The second floor houses the offices of the President, Director of Development, Dean of Students, Dean of Women, Business Office, and four classrooms. Observation decks are provided for the students on both floors facing Tampa Bay.





"Take fast hold of instruction; let her not go; keep her; for she is thy life."

Proverbs 4:13



Admissions and Matriculation

ADMISSIONS

Requirements For Admission

Any student who has received a high school diploma or obtained high school equivalency through satisfactory scores on the General Educational Development (GED) Examination may be considered for admission.

Clearwater Christian College is committed to nondiscriminatory admission practices regarding race, color, sex, and national origin.

A high school transcript for every applicant must be received by the College before admission is granted. Transfer students must see that all records of previous college work are forwarded directly to the Admissions Office from the institution prior to enrollment.

The American College Test (ACT) or Scholastic Aptitude Test (SAT) is required of all freshman applicants. Transfer students above the freshman level are not required to repeat these entrance examinations. If these tests have not been taken, prospective students may secure information about times and places of testing from either the American College Testing Program, Inc., Box 168, Des Moines, Iowa 52240 or the College Board Admissions Testing Program, Box 592, Princeton, New Jersey 08540. The ACT will be administered on campus during New-student Orientation prior to each semester for those who have not had the opportunity to take this exam prior to matriculation at Clearwater Christian College.

Admission Procedure

Freshmen and transfer students, must complete the following steps in order to enroll at Clearwater Christian College:

1. Request an application form and all other materials necessary for the application process from: Admissions Office, Clearwater Christian College, 3400 Gulf-to-Bay Blvd., Clearwater, FL 33519. (Application Procedures page 119.)
2. Complete the application form in full and return it with the \$15 application fee. The application must include a statement of personal testimony and a recent photograph of the applicant.
3. Provide the names and addresses of three references (one pastor/elder, one academic, and one general) on the application form.
4. Request that high school or college transcripts be sent to the Director of Admissions at the College address.
5. Submit scores received on the American College Test or Scholastic Aptitude Test to the Office of Admissions. Have these scores sent directly from the headquarters of these testing agencies. For students who have not taken either test, the ACT will be administered on campus during New-student Orientation each semester.

6. Submit a completed medical form provided in the back of the catalog and signed by a physician.

The College will attempt to maintain contact with all applicants prior to Registration to notify them of their status. The following fees should be paid prior to Registration:

1. An \$85 matriculation fee is due prior to July 15, for Fall semester and December 15, for Spring semester. This fee is payable by full-time students for library use, office services, purchase of a college yearbook, and admission to college sponsored banquets and athletic events at no additional charge.
2. A \$50 non-refundable room deposit (dorm residents only) should be paid prior to August 15, for Fall semester and December 15, for Spring semester. Dormitory residents will be accepted after these dates if space is available.
3. A \$25 orientation fee for dorm residents or \$15 orientation fee for commuters is to be paid upon arrival at the College during the first day of orientation.

Admission Of Transfer Students

Transfer applicants who are in good standing with the institution previously attended will be considered for admission. Standard admission procedure as specified above for high school graduates should be followed. Transfer students are also required to submit transcripts from every post-secondary institution which has been attended. Credits will not be transferred for courses in which a grade lower than C has been recorded. The Registrar of the College will evaluate the transfer credits in order to determine the classification of the transfer student.

Transfer students are advised that due to the normal sequence of courses offered on a two-year cycle they may not always find required courses available when needed. Therefore in some cases graduation could be delayed by one year. For this reason transfer students must be careful to follow the prescribed order of courses suggested by their faculty advisor.



Admission Of Foreign Students

Those international students who wish to apply for admission, and who come from non-English speaking countries, must take the Test of English as a Foreign Language, (TOEFL) and have the scores sent to the Admissions Office before an application packet will be sent. A score of 500 is required for admission to Clearwater Christian College. For information write: Educational Testing Service, Box 899, Princeton, New Jersey 08540 U.S.A. Applicants must have a sponsor and be able to verify that they have sufficient income to meet their school expenses. Upon acceptance, an I-20 form will be issued by the College to be used by foreign students for entrance into the United States. Once admitted to the United States by the Immigration and Naturalization Service (INS), foreign students must be responsible to notify the INS of their whereabouts each year.



MATRICULATION

Registration

Registration is held at the beginning of each semester during which time the student is expected to choose his courses and properly arrange his class schedule with the approval and aid of his faculty advisor. In order to complete Registration each student should remit full payment for tuition, room, board, and fees on the day of registration. If special arrangements for payment are needed the prospective student should see the Manager of Financial Operations for permission to use the installment payment plan. (Financial Information, page 32).

Academic Advising

Each freshman and transfer student will be assigned a faculty advisor upon matriculation to Clearwater Christian College. The role of the faculty advisor in the academic life of the student is to provide the proper guidance throughout the course of study in the student's chosen major field. Prior to Registration each semester, students must see their faculty advisors and receive approval for the courses scheduled. The role in guidance played by the academic advisor need not be limited to scholastic achievement and work load. At Clearwater Christian College students often find their academic advisors an indispensable source for spiritual guidance and direction.

Academic Load

The normal academic load for those students intending to complete their course of study in four years is 16 credit hours per semester. (Some majors require slightly over 128 hours. Students in these majors may occasionally take above the normal load to complete their course of study in the four-year period.) Students desiring to register for classes in excess of 20 credit hours must obtain approval from the Academic Dean or Registrar in consultation with the academic advisor. Students should seek to maintain a balance between extracurricular activities and academic pursuits. (**Student Handbook**, page 27.) If such a balance does not exist, the student may be required to limit his academic load to 14 hours and/or withdraw from excessive extracurricular responsibilities. (Academic Probation, page 46.) The minimum academic load for full-time students is 12 credit hours.

Late Course Addition

Courses may be added to the class schedules after Registration with permission of the Academic Dean or Registrar within the time stated in the Calendar of Events, pages 6-7.

Late Registration

Late registrants will be subject to a \$15 late registration fee. Students are required to be present at Registration unless granted prior permission from the Registrar. No student will be permitted to register later than the date stated in the Calendar of Events.

Change of Major

Changing the major course of study is permitted at any point during the degree program after notifying the academic advisor and the Registrar. A Change of Major Form is available in the Admissions Office for this purpose. This form must be completed and signed by the appropriate college authorities before the change of major is official.

Withdrawal From a Course

Withdrawal from a course requires completion of an Authorization for Schedule Change form obtained from the Registrar. A designation of "W" (withdrawn) will be recorded on the student's record regardless of grade level if withdrawal occurs before the mid-term warning date. If the withdrawal occurs after the mid-term warning date, a grade of "WP" (withdrawn passing) will be recorded if work has been satisfactory, and a grade of "WF" (withdrawn failing) will be recorded if work has been unsatisfactory. When a "WF" is assigned, a grade of "F" is figured in the student's grade point average.

Courses which are dropped before the last day of Registration as stated in the Calendar of Events will not be recorded. Students are responsible for full payment for courses which are dropped after the last day of drop/add week as stated in the Calendar of Events.

Withdrawal From the College

Withdrawal from the College requires completion of a Withdrawal Form obtained from the Registrar. This form must be submitted to the faculty advisor, Academic Dean, and Business Manager of the College before withdrawal becomes official. The effective date of the withdrawal shall be the date on which signatures are affixed by the college officials. Calculation of any refunds due is based on that date. (Refund policy, page 34) Failure to follow the administrative procedure for withdrawal will result in a grade of "WF" in all courses and forfeiture of a financial refund.

Re-Admission to the College

Former Clearwater Christian College students who have been absent from the College one year or more and who wish to re-enroll must file an Application for Re-admission. Re-admittance of students is not automatic but subject to approval by the Admissions Committee of Clearwater Christian College.

Early Enrollment

Early Enrollment is a program for academically superior high school students to enroll in classes on the college level on a part-time basis prior to graduation. Credit earned in the Early Enrollment program will be validated upon graduation from high school.

Requirements for participation:

1. High school senior status.
2. Completed Application for Admission.
3. Personal recommendation from high school principal.
4. Acceptable college entrance test scores.

Special Students

Special Students are those who meet most of the requirements for regular admission but are not enrolled in a degree program. For a student to change his status from special to degree seeking, he must complete a medical form, meet all requirements listed under Requirements for Admission in the current college catalog, and be interviewed by the Registrar and a faculty advisor to determine his current status.

Class Attendance

All absences will be considered unexcused except for illnesses, sanctioned College Activities, or emergency situations approved by the Academic Dean or the Dean of Students. Students are responsible for contacting the School Nurse or Dean of Students on the day of their illness. Students missing class due to sanctioned College activities are responsible for the material covered during that time. Two points per unexcused absence will be deducted from the final grade. Any student missing 25% of the scheduled class meetings, whether excused or unexcused, will be automatically withdrawn from the class and receive a grade of "WP" or "WF". The 25% rule converted to absences is shown below:

Classes meeting once a week	4 absences
Classes meeting twice a week	8 absences
Classes meeting three times a week	12 absences
Classes meeting four times a week	16 absences

Punctual attendance in all classes is expected. Three tardies will equal one absence.

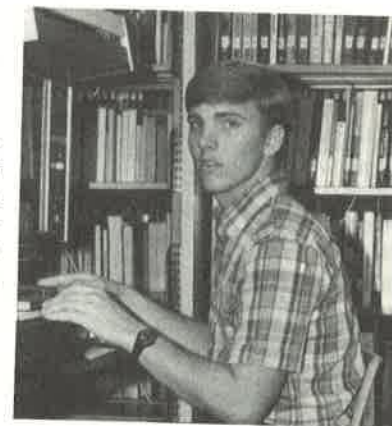
Graduation Activities Attendance

All full-time students of Clearwater Christian College are required to attend the Baccalaureate and Commencement services at the end of the school year. (**Student Handbook**, page 29).

Testing Program

In order to compare the academic abilities of the students among themselves and the students of other colleges and universities, as well as to provide a measurement of progress made during the college career, the following testing program is employed at Clearwater Christian College.

1. American College Test (ACT) is administered during Freshman Orientation to incoming freshman, who have not taken the ACT or SAT. There is a \$15 charge for this service.
2. The College Level Academic Skills Test (CLAST) is taken by all sophomores during the Fall semester each year. Those who do not



pass this exam are required to take Effective Composition, EN 170, during the next term. There is a \$20 fee for the CLAST exam.

3. Proficiency tests are offered at Clearwater Christian College during the first week of each semester. Students who receive a 90% or above will earn a passing mark and be eligible to enter the next level of the course. The title of the proficiency examination will be placed on the student's transcript and the student will receive a "P" for passing the test. Proficiency examinations will not result in the accumulation of credit hours. The fee for each of these examinations is \$25. Proficiency tests are offered in the following courses:

- | | |
|---------------------------|-----------------------------|
| a. Introductory Typing | g. Intro to Data Processing |
| b. Intermediate Typing | h. Computer Programming I |
| c. Introductory Shorthand | i. Computer Programming II |
| d. Intermediate Shorthand | j. English Composition I |
| e. Elementary Spanish I | k. College Mathematics |
| f. Elementary Spanish II | l. Elementary German I |
| | m. Elementary German II |

4. College Level Examination Program (CLEP). Clearwater Christian College accepts the transfer of credit for up to 12 semester hours for general examination CLEP scores at the fiftieth percentile based on national norms. The minimum acceptable scores are listed below:

General Exams		Scores
a. English Composition w/Essay		600
b. Mathematics		600
Subject Exams		Scores
a. Biology		50
b. Physical Science		50

Correspondence Credit

A total of nine hours of correspondence credit from approved correspondence schools may be accepted to meet degree requirements at Clearwater Christian College. All such courses must be approved in advance by the Academic Dean or Registrar. The Academic Affairs Committee reserves the right to approve all correspondence courses accepted for credit.



"Blessed be the Lord, who daily loadeth us with benefits, even the God of our salvation."

Psalm 68:19



FINANCIAL INFORMATION

The cost of attending Clearwater Christian College is reasonable because of the faithful support received from interested churches and friends who desire to invest in Christian education.

Before arriving on campus, students and parents should become aware of the costs involved and make adequate preparation to meet the minimum financial requirements outlined below.

EXPENSES (Subject to Change)

Full-time students

Tuition per semester.....	\$1,100
The tuition rate is based on a normal course load of 12-17 semester hours. A student who enrolls for additional hours is charged at the rate of \$40 per semester hour above 17.	
Room and board per semester (includes Florida state tax).....	1,200
Matriculation fee per semester.....	85

Part-time students

Tuition per semester hour for a course load of 1-11 semester hours.....	75
Room and board per semester (includes Florida state tax).....	1,200
Permission required from the Dean of Students.	
Matriculation fee per semester.....	50

Summer School

Tuition per credit hour.....	65
Matriculation fee per semester.....	20
Room and board per session.....	250
Tuition and matriculation fees for summer school are due at Registration and are non-refundable. Room and board may be paid in advance on a weekly basis.	

SPECIAL FEES

Accident Insurance (required of all full-time students).....	\$ 19.00
American College Test (ACT) administration fee.....	15.00
Application fee.....	15.00
Audit fee (per semester hour).....	40.00
Automobile registration (per year).....	5.00
Change of course fee (drop/add).....	2.00
Computer lab fee (for each course taken).....	25.00
Fine arts fee	
(per credit of private instruction for non-music majors).....	100.00
Graduate Record Examination fee (required of all seniors).....	29.00
Graduation fee.....	35.00
Health/Infirmary fee (per semester).....	16.00
Identification Card fee (per year).....	4.00
Installment fee.....	15.00
Late Registration fee.....	15.00
Orientation fee (residents).....	25.00
(commuters).....	15.00
Room Deposit	
(non-refundable, applied toward room and board).....	50.00
Science lab fee (for each course taken).....	15.00
Student teaching fee.....	25.00
Test change fee.....	2.00
Transcript fee.....	2.50
Typing fee (for each course taken).....	10.00

METHOD OF PAYMENT

Pre-registration - Payments prior to Registration:

- Application and Orientation fees (new students only)
- Room deposit (resident students only)

Registration - Payments due at Registration:

- Tuition
- Room and Board
- Matriculation fee
- Applicable Special fees

Students unable to pay in full at registration will be permitted to register on the following installment basis:

- 1) Make a minimum payment of \$450 (resident students) or \$300 (commuting students) plus matriculation fee.
- 2) Sign a promissory agreement acknowledging responsibility for paying the outstanding balance and applicable interest in three equal payments. Installment payments are due on the following dates:

Fall semester

- October 1
- November 1
- December 1

Spring semester

- February 15
- March 15
- April 15

An Installment fee of \$15 is charged at Registration. Interest is assessed on the unpaid balance at the rate of 12 percent per annum.

Students who anticipate a problem in meeting their obligations should contact the Director of Financial Aid or the Manager of Finances and Operations *well in advance* of Registration to make arrangement for full payment.

REFUNDS

Parents and students should be aware of the financial loss incurred by withdrawing from College, before the end of any semester. If a student withdraws from college no refunds are given or credit applied on room, matriculation, or insurance fees. If the student withdraws before the end of the eighth full week of classes, the following percentages are refunded on tuition and meal payments only.

First week - 90%	Fifth week - 50%
Second week - 80%	Sixth week - 40%
Third week - 70%	Seventh week - 30%
Fourth week - 60%	Eighth week - 20%

Refunds *cannot* be granted if the student

- 1) has attended eight weeks or more,
- 2) unofficially withdraws by failing to submit to exit interviews and complete a withdrawal form,
- 3) is dismissed as a result of disciplinary action, or
- 4) drops a course after the end of drop/add week.



FINANCIAL AID

In recent years tuition, room, and board costs have risen steadily at nearly every college in the United States. It is the belief of Clearwater Christian College that the final responsibility for bearing this cost rests with the student and his parents. We have not ignored the difficulty that the current inflationary trend has placed on some families of limited financial means. We have made available several federal, state, and college-funded financial aid programs to assist the needy Christian student in meeting his obligations. These programs must be administered in a sound and equitable manner so as not to affect the financial stability of the College or compromise its philosophic and historic aversion to directly receiving federal funds. Clearwater Christian College is not obligated to extend financial aid to any student. Financial aid, like attendance itself, is a privilege and not a right. Students who are able to pay their entire bill should thank the Lord for His provision and do so without aid. Students receiving financial aid should thank the Lord for this source of provision and take care to see that all money received is used to meet legitimate college-related expenses.

I. EXTERNAL ASSISTANCE PROGRAMS

A. PELL GRANT - The Pell Grant is a monetary award provided to college students in eligible institutions by the Federal Government. The amount of award is based on financial need and academic load. The Pell Grant is intended to be the foundation of the financial aid package and may be combined with other forms of aid in order to meet the cost of education. Pell Grant awards range from \$200 to \$1,900 annually for full-time students. The award will be applied in two payments, one each semester. Students may apply for Pell Grant funds by completing an application provided by the College Scholarship Service (CSS), American College Testing Service (ACT), or the Application for Federal Student Aid (AFSA) published by the Department of Education, all of which are available through the Financial Aid Office of the College.

B. GUARANTEED STUDENT LOAN - The Guaranteed Student Loan (GSL) is a financial assistance program available to United States citizens or permanent resident aliens attending eligible institutions. The GSL enables a student whose attendance is at least half-time (6 hours per semester) to make application directly to a participating lender who is willing to make the educational loan. The loan is granted for a period of one academic year. The student may borrow up to \$2,500 per year (maximum \$12,500 in 5 years). Eligibility is based upon the financial need of the applicant using a formula involving income, assets, college costs, and use of other available federally financed assistance programs. The current interest rate for the GSL is 8 per cent per annum and is repayable in minimum payments of \$50 per month beginning six months after the student graduates, drops to below half-time academic

load, or withdraws from college. Application forms are available through participating lenders or the Financial Aid Office of the College.

- C. AUXILIARY LOAN PROGRAM** - The Auxiliary Loan Program, also known as the Parent Loan for Undergraduate Students, provides additional funds for educational expenses. Parents may borrow up to \$3,000 per year (maximum \$15,000 in 5 years) for each child who is a dependent undergraduate student and is enrolled for at least six credit hours per semester. This loan program is also available for independent students. The current interest rate is 12 per cent per annum, and repayment begins within 60 days of receipt of funds.
- D. FLORIDA STUDENT ASSISTANCE GRANT** - The Florida Student Assistance Grant is available to eligible citizens or permanent residents of the United States who have resided in or had domicile in the state of Florida for at least 24 consecutive months preceding the beginning of the academic year for which application is made. The annual non-repayable awards range from \$200 to \$1,200. Students applying for these funds must file either the Financial Aid Form (FAF) or Family Financial Statement (FFS) by April 1 prior to the upcoming Fall term.

II. INTERNAL ASSISTANCE PROGRAMS

Clearwater Christian College has several college-funded financial aid opportunities. All college programs provide credit applicable only to the tuition portion of the student's account. Applications may be obtained through the Financial Aid Office of the College.

- A. ACADEMIC SCHOLARSHIP** - Entering first-term freshmen who have earned the equivalent of a 3.50 GPA in high school, ranked in the upper 10 per cent of their graduating class, and whose composite ACT score is 21 or higher are eligible for this scholarship. The scholarship awards \$350 each semester for full-time students. While in College the student must maintain at least a 3.25 GPA with no incomplete grades. Part-time students are not eligible for this award.
- B. CHRISTIAN WORKER'S SCHOLARSHIP** - A full-time Christian worker or the children of a full-time Christian worker whose income is the sole or major source of support for his family is eligible for a Christian Worker's Scholarship. The amount of award for full-time students is \$300 per semester and 30 per cent of tuition for part-time students. Verification of eligibility data is required each year for continued participation.
- C. CHRISTIAN SCHOOL TEACHER SCHOLARSHIP** - Individuals teaching full-time in a Christian school ministry are eligible for a 30 per cent tuition discount, regardless of the income of other family members.
- D. FAMILY SCHOLARSHIP** - Any family with more than one student enrolled at the College at the same time is eligible. The scholarship awards \$165 each semester for full-time stu-

dents and 15 per cent of tuition for part-time students. Awards are applicable to the second or additional family members' account(s).

- E. PRESIDENT'S SCHOLARSHIP** - Entering first-time freshmen who have earned the equivalent of a 3.50 GPA in high school, ranked in the upper 10 per cent of their graduating class, and whose composite ACT score is 26 or higher are eligible for this scholarship. The scholarship awards \$750 each semester for full-time students. While in College the student must maintain at least a 3.50 GPA with no incomplete grades. Part-time students are not eligible for this award.
- F. SPECIAL ASSISTANCE PROGRAM** - The Special Assistance Program is designed to assist students with extreme financial need. Other eligibility criteria include Christian character and service, satisfactory academic history, and participation in the Pell Grant program. Award amounts vary with each student, and a limited number of applicants are considered annually.
- G. CAMPUS WORK/LOAN PROGRAM** - The College provides campus work opportunities to a limited number of students. Resident students with extreme financial need are encouraged to apply for this program. Participating students may receive loan amounts of \$125 to \$650 each semester depending on the number of hours they intend to work. IF AT THE END OF ANY GIVEN SEMESTER THE STUDENT HAS NOT SATISFIED THE PROGRAM'S WORK REQUIREMENT, HE IS RESPONSIBLE FOR PAYING THE OUTSTANDING BALANCE. Campus work opportunities are considered a privilege, and the student's work must be satisfactory in order for him to continue.



III. GUIDELINES FOR FINANCIAL AID

- A. The Pell Grant is considered the foundation of the financial aid package. Students desiring to participate in any of the College scholarship/loan programs must first apply for this award.
 - B. College-funded scholarships provide credit exclusively to the tuition portion of the student's account.
 - C. Mere eligibility is not enough to assure a scholarship. Requests for financial aid will be considered only after an application for financial aid has been completed.
 - D. Applicants for financial aid must be candidates for a Bachelor of Arts, Bachelor of Science, or Associate of Science degree from Clearwater Christian College. Non-degree seeking students are ineligible for most financial aid programs.
 - E. Returning students who intend to maintain eligibility for their college-funded scholarships must reapply annually prior to Fall enrollment.
 - F. New applications must be completed each year for the state and federal assistance programs.
 - G. Students who qualify for any kind of financial aid will be given an Award Letter on or before Registration indicating the exact amount and conditions of their scholarships.
 - H. Eligible students are limited to one college-funded scholarship each semester. Students will receive aid from the program that provides the maximum funds.
 - I. Students expecting to maintain their eligibility for continued financial aid must satisfy the College standard for academic progress as described on page 46. In addition, at the end of each semester, students participating in federal aid programs, must successfully complete at least 75 per cent of all hours attempted during that semester.
- At the end of any given semester, a student who fails to meet the above standard of progress will be given one additional semester of probationary eligibility. Students who fail to raise their academic standing to meet the College standard at the end of the probationary semester will not be eligible for continued federal financial aid. Students with mitigating circumstances may appeal in writing to the Director of Financial Aid of the College within 30 days of notification.

IV. FOREIGN STUDENT POLICY

In order to enter the United States for educational purposes, foreign students are required to provide evidence of adequate financial support to cover the expenses they expect to incur for a period of one academic year. Foreign students are encouraged to contact the Immigration and Naturalization Service (INS); 500 Zack Street; Tampa, Florida 33602 USA, and/or their own embassy for additional information. Foreign students are not eligible to participate in the federal or state financial aid programs unless they are classified as eligible non-citizens.



"The entrance of thy words giveth light; it giveth understanding unto the simple."

Psalm 119:130



Academic Information

DEGREES OFFERED

Clearwater Christian College offers both the two-year associate degree and four-year bachelor degree.

- I. The **Associate of Science** degree is awarded upon successful completion of requirements in the areas of Preschool Education or Secretarial Science. This degree normally requires two years of study as a full-time student. Candidates for this degree must have earned a minimum of 64 credits and a grade point average (GPA) of at least 2.00 with no grade lower than a "C" in major course requirements.
- II. The **Bachelor of Science** degree is awarded upon successful completion of requirements in one of the following areas: English Bible, Elementary Education, Secondary Education, Music Education, Physical Education, Business Administration, or Computer Programming. This degree normally requires four years of study as a full-time student. Candidates for this degree must have earned a minimum of 128 credits with a GPA of 2.00 with no grade lower than a "C" in major course requirements.
- III. The **Bachelor of Arts** degree is awarded upon successful completion of requirements in one of the following areas: Bible, Biblical Literature, Psychology, English, Secondary Education (English) or Music. This degree normally requires four years of study as a full-time student. Candidates for this degree must have earned a minimum of 128 credits with a GPA of 2.00 with no grade lower than a "C" in major course requirements.

Consult the various Academic Divisions under "Programs of Instruction" (page 48) for specific requirements for each major. The two- and four-year programs are outlined under the program headings of each division. The duration of a course of study may be longer due to reduced semester course loads, scheduling difficulties, remedial or repeated course work, or specific requirements within academic programs which exceed the standard course of study. Students who extend their course work over a period longer than three years (for Associates) or six years (for Bachelors) may be required to meet the course requirements of the latest catalog. Students enrolled in education programs in which requirements for state teacher certification are established by the State of Florida may be expected to adjust their program to meet the current Florida Department of Education requirements.

In addition to the academic requirements listed above, candidates for graduation are also required to

1. be in good standing (not on disciplinary probation),

2. take the final 24 semester hours of study at Clearwater Christian College, and
3. complete the Graduate Record Exam (students in the four-year programs only).

The faculty and Board of Directors of the College review the list of candidates for graduation during the Spring of each year. All degrees, without exception, are awarded at the annual Spring Commencement. Students who finish all requirements for graduation during the Fall semester will receive their degrees at the following Spring Commencement.

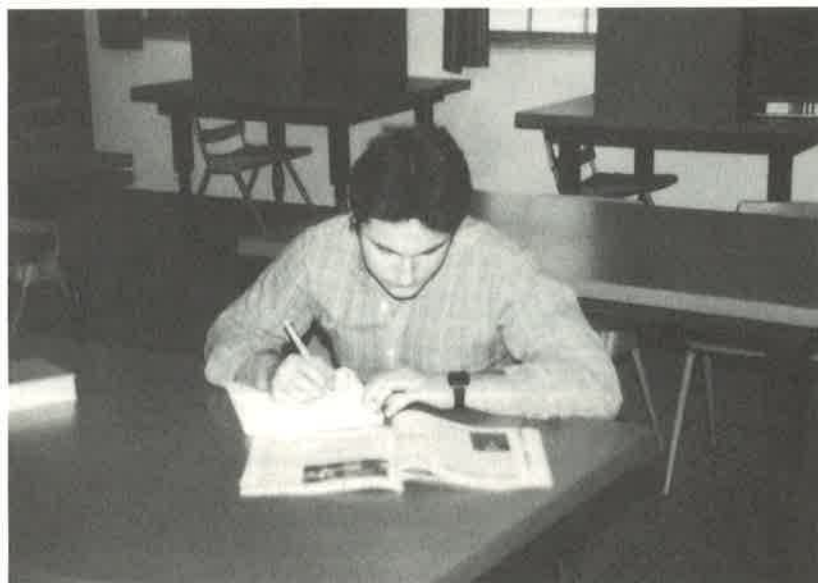
Clearwater Christian College considers that a total of 18 or more semester hours of credit in one area with the same prefix code (BU, MS, ED, etc.) constitutes an academic "minor".



GENERAL EDUCATION REQUIREMENTS FOR ASSOCIATE DEGREES

Candidates for the Associate of Science Degree must complete 25 semester hours of general requirements as listed below. Additional studies in these fields may be taken as electives. In addition to these general requirements, both major programs (Preschool Education and Secretarial Science) list other required courses.

<i>General Requirements</i>	Semester Hours
Freshman Orientation, GS 101	1
English Composition, EN 101, 102	6
College Mathematics, MS 101	3
Bible Survey, BI 101, and 102 or 103	6
Modern Religious Issues, CE 106	2
Basic Bible Doctrines, BI 411, 412	6
Senior Seminar, GS 401	1
Total:	25



GENERAL EDUCATION REQUIREMENTS FOR BACHELOR DEGREES

Candidates for the Bachelor of Arts and Bachelor of Science degrees must complete 63 semester hours of general requirements as listed below. These requirements comply with those of the Florida Department of Education for State Certification (Chapter 6A-4.06). Additional studies in these fields may be taken as electives. In addition to these general requirements, each major program lists other required courses.

	Semester Hours
Area I Arts and Communication (12 semester hours)	
1. English Composition	6
2. Speech, Oral Interpretation, or Business Communications*	3
3. Foreign Language, or Journalism	3
Area II Human Adjustment (27 semester hours)	
1. Bible requirements (Survey, Doctrines, Modern Religious Issues, Bible Elective)	20
2. Physical Education Activity#	2
3. General Psychology or Introduction to Philosophy +	3
4. Freshman Orientation and Senior Seminar	2
Area III Science and Mathematics (9 semester hours)	
1. General Biology, Physical Science	3 or 6
2. College Mathematics, College Algebra	3 or 6
Area IV Social Science (9 semester hours)	
1. General Sociology, Economic Concepts, American Government, World Geography, or Communism	3
2. Western Civilization or United States History	6
Area V Humanities (6 semester hours ☆)	
American or English Literature	6
Total:	63

* Business Communications is required for Business Administration and Computer Programming majors.

P.E. Activity is not required of students who have completed military service or are over 25 years of age.

+ Education majors must take General Psychology; B.A. candidates must take Introduction to Philosophy.

☆ Three additional hours of Fine Arts credit are required for Education majors and candidates for the B.A. degree.

GRADING SYSTEM

Courses completed satisfactorily are applied toward the graduation requirements on the basis of semester credit hours. Normally, one credit or one semester hour represents 50 minutes of class instruction per week for one semester. One semester consists of sixteen weeks of instruction including final examinations.

Each student's academic progress is evaluated and measured on a numerical percentage of 100. The numerical grade is translated into a letter grade according to the following scale:

94-100	= A
85-93	= B
73-84	= C
67-72	= D
Below 67	= F

Letter grades are translated into quality points on a 4.00 scale according to the following values and appear on the student's transcript.

- A— 4 quality points. Indicates superior achievement in every aspect of course work, mastery of materials presented, initiative in research, and insight into the total perspective.
- B— 3 quality points. Indicates substantial achievement and above average grasp of course content.
- C— 2 quality points. Indicates adequate achievement and good grasp of course content.
- D— 1 quality point. Indicates below average effort or lack of understanding and insight expected from a student on the college level. This grade will not be accepted for courses in the student's major field.
- F— 0 quality points.
- W— Indicates withdrawal from a course before the mid-term warning date with instructor's approval. This grade is not included in the grade point average.
- WP— Indicates withdrawal from a course after the mid-term warning date with passing grade and instructor's approval. This grade is not included in the grade point average.
- WF— 0 quality points. Indicates withdrawal from a course after the mid-term warning date by a student doing failing work. WF is also given when a student misses 25 percent of the scheduled classes. This grade is included in the grade point average.
- P— Indicates passing grade for proficiency test. This grade is not included in the grade point average.
- I— Indicates that the student has presented valid reasons for incomplete course work. Necessary work must be made up within one semester or the final grade will be lowered.
- S— Indicates that standards for fulfilling Christian Service requirements have been met.
- U— Indicates that student has failed to meet the minimum expected standards for Christian Service requirements.

GRADE POINT AVERAGE

A student's grade point average (GPA) is calculated by dividing the total number of quality points by the total number of credits earned.

GRADUATION HONORS

Graduation honors are reserved for those students who have earned a GPA of 3.70 or better according to the following scale:

summa cum laude3.90-4.00
magna cum laude3.80-3.89
cum laude3.70-3.79

SCHOLASTIC HONORS

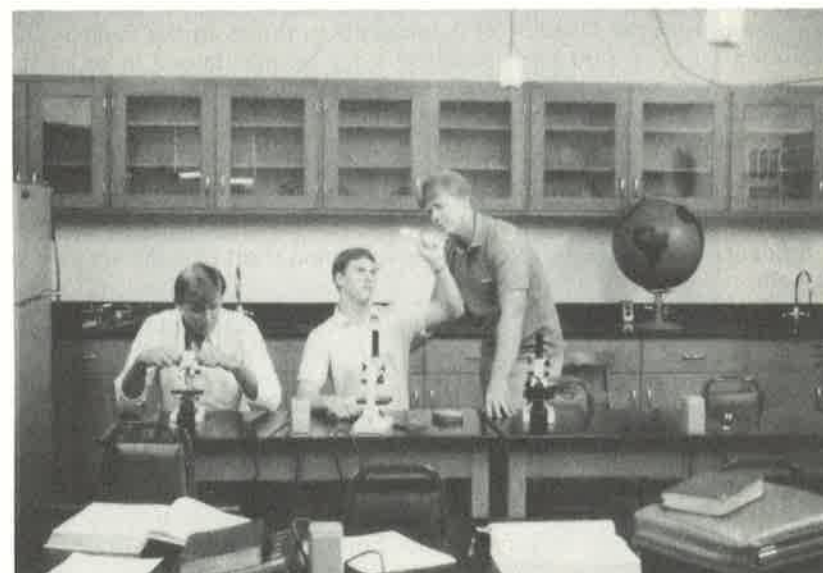
Dean's List Award

The Dean's List Award is a scholastic honor given each semester to those full-time students who have earned a GPA of 3.50 to 3.89 during the previous semester.

President's List Award

The President's List Award is a scholastic honor given each semester to those full-time students who have earned a GPA of 3.90 or better during the previous semester.

Seniors who have been on the President's List continuously since their freshman year may be excused, with the approval of the instructors involved, from second semester final examinations in their major fields.



ACADEMIC PROGRESS AND PROBATION

Each student must demonstrate through his scholastic record that he is making satisfactory academic progress toward his degree in order to avoid academic probation and remain eligible for federal financial aid. At the end of every semester each student's progress is reviewed and specific decisions made concerning continued enrollment. The minimum standard for academic progress for all students, including those transferring from other institutions, is shown below.

Semester hours attempted in college	Required cumulative GPA
1-15	1.75
16-29	1.85
30-44	1.95
45 and above	2.00

A student who fails to meet the minimum required cumulative GPA will be placed on academic probation for the following semester. During this semester, the student's academic load will be restricted to 14 semester hours. Participation in intercollegiate sports and the Student Council is not permitted during this probationary period, and resident students are required to attend nightly study sessions in the College library.

At the end of the semester of probation, the student's academic status is reviewed. Anyone whose cumulative GPA does not meet the standard required by the chart above will be ineligible to enroll for one semester (not including Summer sessions). After that time, the student must request permission from the Director of Admissions to return to the College. A minimum GPA of 2.00 each semester must be maintained in order to continue. Any student dismissed twice because of unsatisfactory academic progress may not re-enroll for one academic year and then only after obtaining permission from the Admissions Committee of the College.

STUDENT CLASSIFICATION

Student classification is based on the following chart of semester hours earned:

Class	Semester Hours
Freshman	0-25
Sophomore	26-57
Junior	58-89
Senior	90 and above

Students who register for classes but are not candidates for graduation are classified as Special Students. They are not permitted to participate in intercollegiate sports or serve on the Student Council.



"The fear of the Lord is the beginning of wisdom: and the knowledge of the holy is understanding."

Proverbs 9:10



Programs of Instruction

CLEARWATER CHRISTIAN COLLEGE ACADEMIC DIVISIONS

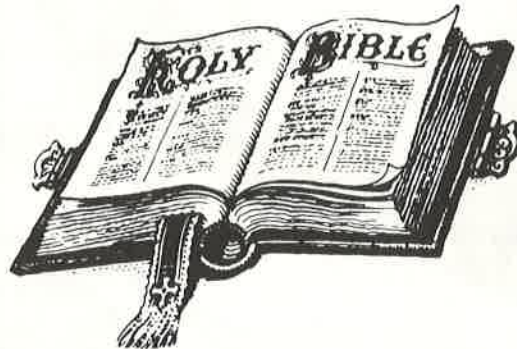
Clearwater Christian College offers two major areas of study leading to the Associate of Science (A.S.) degree and twelve major areas of study leading to either the Bachelor of Science or Bachelor of Arts degree. These majors are grouped in four Academic Divisions as listed below:

- I. Division of Biblical Studies
 - Bible
 - Biblical Literature
 - English Bible

- II. Division of Business, Mathematics, and Computer Programming
 - Business Administration
 - Computer Programming
 - Secretarial Science (A.S.)

- III. Division of Education and Psychology
 - Preschool Education (A.S.)
 - Elementary Education K-6
(Special Education minor available)
 - Music Education K-12
 - Physical Education K-12
 - Secondary Education 7-12 (five proficiencies available)
 - Psychology

- IV. Division of Literature and Fine Arts
 - English
 - Music



DIVISION OF BIBLICAL STUDIES

Dean N. Spotts, Chairman
Dr. A. Steele, Dr. W. Pardee, Dr. E. Oliver, Mr. R. Carver

The Division of Biblical Studies offers majors in Bible, Biblical Literature, and English Bible. Each of these majors is designed to equip an individual with a thorough knowledge of God's Word and various related subjects including Ancient and Church History, Philosophy, Theology, Comparative Religions, and Cults.

The major in Bible requires two years of Greek, and includes an emphasis on studies in the English Bible. This major is designed as preparation for seminary studies but has value as a terminal degree for some Christian ministries.

The major in Biblical Literature requires three years of Greek Studies with the third year composed of text studies in New Testament books. One semester of Elementary Hebrew is required and an optional second semester is offered. This program serves the student who desires a greater proficiency in N.T. Greek on the undergraduate level. The Biblical Literature major has proven to be excellent pre-seminary preparation.



BACHELOR OF ARTS IN BIBLE

	Semester I	Semester II
Credits		
<i>FRESHMAN</i>		
Bible Survey-Old Testament BI, 101, 102.....	3	3
English Composition, EN 101, 102.....	3	3
Physical Education Activity, PE 101-108.....	1	1
General Biology, SCI 101/Physical Science, SCI 102.....	3	3
Freshman Orientation, GS 101.....	1	
Modern Religious Issues, CE 106.....		2
Survey of Christian Education, CE 111/Speech, SP 162.....	3	3
Social Science Elective/General Psychology, PSY 271.....	3	3
	17	18
<i>SOPHOMORE</i>		
Literature Survey, LIT 211, 212, 221, or 222.....	3	3
History Survey, HY 201, 202, 221, or 222.....	3	3
Elementary Greek, LA 101, 102.....	3	3
General Elective/Bible Survey-N.T., BI 103.....	3	3
Life of Christ, BI 201 or John's Gospel, BI 250.....	3	
College Mathematics, MS 101.....		3
	15	15
<i>JUNIOR</i>		
Intermediate Greek, LA 201, 202.....	3	3
Ancient History, HY 301, 302.....	3	3
Biblical Introduction, BI 301, 302.....	3	3
Comparative Religions, BI 307/Cults, BI 308.....	3	3
Introduction to Philosophy, PHI 201/Isaiah, BI 365.....	3	3
	15	15
<i>SENIOR</i>		
Basic Bible Doctrines, BI 411, 412.....	3	3
Practical Ministerial Training, CE 391, 392.....	1	1
Church History, HY 401, 402.....	3	3
Romans, BI 352/Intertestament Period, BI 370.....	3	3
Bible Electives.....	6	6
Senior Seminar, GS 401.....	1	
	17	16
Recommended Electives:		
Counseling Through the Scriptures, PSY 426		
Techniques of Christian Counseling, PSY 475		
Pastoral Epistles, BI 259		

BACHELOR OF ARTS IN BIBLICAL LITERATURE

	Semester I	Semester II
Credits		
<i>FRESHMAN</i>		
Bible Survey-Old Testament, BI 101, 102.....	3	3
English Composition, EN 101, 102.....	3	3
Physical Education, PE 101-108.....	1	1
General Biology, SCI 101/Physical Science, SCI 102.....	3	3
Freshman Orientation, GS 101.....	1	
Modern Religious Issues, CE 106.....		2
Survey of Christian Education, CE 111/Speech, SP 162.....	3	3
Social Science Elective/General Psychology, PSY 271.....	3	3
	17	18
<i>SOPHOMORE</i>		
Literature Survey, LIT 211, 212, 221, or 222.....	3	3
History Survey, HY 201, 202, 221, or 222.....	3	3
Elementary Greek, LA 101, 102.....	3	3
General Elective/Bible Survey-N.T., BI 103.....	3	3
Life of Christ, BI 201 or John's Gospel, BI 250.....	3	
College Mathematics, MS 101.....		3
	15	15
<i>JUNIOR</i>		
Intermediate Greek, LA 201, 202.....	3	3
Ancient History, HY 301, 302.....	3	3
Biblical Introduction, BI 301, 302.....	3	3
Comparative Religions, BI 307/Cults, BI 308.....	3	3
Introduction to Philosophy, PHI 201.....	3	
Intertestament Period, BI 370.....		3
Practical Ministerial Training, CE 391, 392.....	1	1
	16	16
<i>SENIOR</i>		
Basic Bible Doctrines, BI 411, 412.....	3	3
Church History, HY 401, 402.....	3	3
Romans, BI 352/Bible Elective.....	3	3
Greek Text Studies, LA 311, 312.....	3	3
Elementary Hebrew, LA 103/Bible Elective.....	3	3
Senior Seminar, GS 401.....	1	
	16	15
Recommended Electives:		
Counseling Through the Scriptures, PSY 426		
Techniques of Christian Counseling, PSY 475		
Pastoral Epistles, BI 259		

BACHELOR OF SCIENCE IN ENGLISH BIBLE

	Semester I	Semester II
	Credits	Credits
FRESHMAN		
Bible Survey-Old Testament, BI 101, 102.....	3	3
English Composition, EN 101, 102.....	3	3
Physical Education Activity, PE 101-108.....	1	1
General Biology, SCI 101/Physical Science, SCI 102.....	3	3
Freshman Orientation, GS 101.....	1	
Modern Religious Issues, CE 106.....		2
Survey of Christian Education CE 111/Speech, SP 162.....	3	3
Social Science Elective/General Psychology, PSY 271.....	3	3
	17	18
SOPHOMORE		
Literature Survey, LIT 211, 212, 221, or 222.....	3	3
History Survey, HY 201, 202, 221, or 222.....	3	3
Bible Electives.....	3	3
General Elective/Bible Survey-N.T., BI 103.....	3	3
Life of Christ, BI 201 or John's Gospel, BI 250.....	3	
College Mathematics, MS 101.....		3
	15	15
JUNIOR		
Bible Elective/Counseling Elective.....	3	3
Ancient History, HY 301, 302.....	3	3
Biblical Introduction, BI 301, 302.....	3	3
Comparative Religions, BI 307/Cults, BI 308.....	3	3
Introduction to Philosophy, PHI 201/Isaiah, BI 365.....	3	3
	15	15
SENIOR		
Basic Bible Doctrines, BI 411, 412.....	3	3
Practical Ministerial Training, CE 391, 392.....	1	1
Church History, HY 401, 402.....	3	3
Romans, BI 352/Intertestament Period, BI 370.....	3	3
Bible Electives.....	6	6
Senior Seminar, GS 401.....	1	
	17	16
Recommended Electives:		
Counseling Through the Scriptures, PSY 426		
Techniques of Christian Counseling, PSY 475		

DIVISION OF BUSINESS, MATHEMATICS, AND COMPUTER PROGRAMMING

Dr. D. Steele, Chairman
Dr. J. Bauman, Mr. P. Traversa, Mrs. B. Lewter

The Division of Business, Mathematics, and Computer Programming consists of majors in Business Administration, Computer Programming, and Secretarial Science. These programs are structured to produce graduates who are well-grounded in their chosen profession and in their Christian faith. A primary objective of the College is that these graduates will make a positive contribution through their careers that will glorify the Lord Jesus Christ. Students in the business and computer majors are instructed in the virtues of the free-enterprise system as opposed to alternative economic theories and systems.

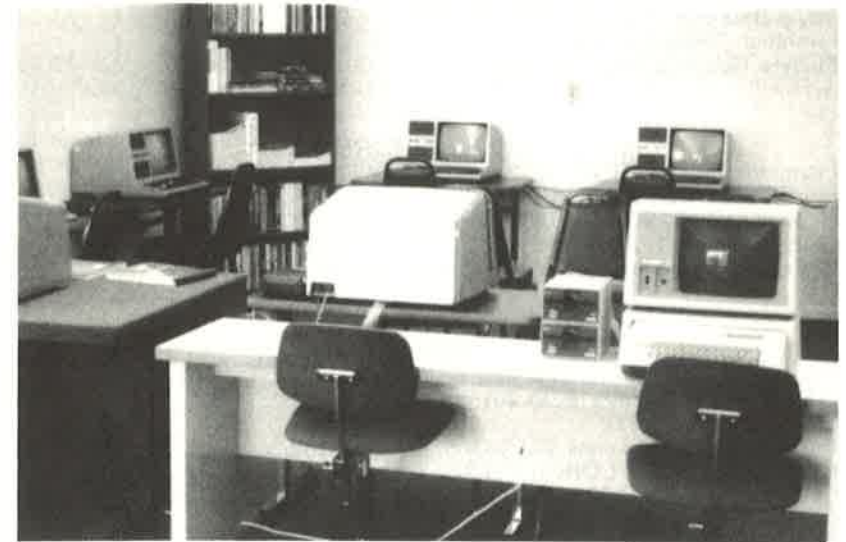


BACHELOR OF SCIENCE IN BUSINESS ADMINISTRATION

	Semester I	Semester II
	Credits	Credits
FRESHMAN		
Bible Survey-Old Testament, BI 101, 102.....	3	3
English Composition, EN 101, 102.....	3	3
Principles of Management, BU 101, 102.....	3	3
Physical Education Activity, PE 101-108.....	1	1
General Biology, SCI 101/College Mathematics, MS 101.....	3	3
Freshman Orientation, GS 101.....	1	
General Elective/Modern Religious Issues, CE 106.....	2	2
	16	15
SOPHOMORE		
Literature Survey, LIT 211, 212, 221, or 222.....	3	3
History Survey, HY 201, 202, 221, or 222.....	3	3
Principles of Accounting, BU 201, 202.....	3	3
Principles of Economics, ECO 201, 202.....	3	3
Business Communications, BU 203/Speech, SP 162.....	3	3
College Algebra, MS 201/Bible Survey-N.T., BI 103.....	3	3
	18	18
JUNIOR		
Business Law, BU 303, 304.....	3	3
Computer Programming, CS 101.....	3	
Introduction to Data Processing, CS 102.....		3
Statistics, MS 311/General Psychology, PSY 271.....	3	3
Cost Accounting, BU 305/Social Science Elective.....	3	3
General Electives.....	3	3
	15	15
SENIOR		
Basic Bible Doctrines, BI 411, 412.....	3	3
Corporate Finance, BU 401/Taxation, BU 402.....	3	3
Principles of Marketing, BU 403.....	3	
General Electives.....	3	3
Bible Elective/Labor & Management Relations, BU 404.....	3	3
Senior Seminar, GS 401/Business Policy, BU 421.....	1	3
	16	15

COMPUTER PROGRAMMING

Due to the great technological advancements which are changing our society at an ever increasing rate, Christian businessmen and women need to be equipped to cope in the business world. Clearwater Christian College has introduced a major in computer programming to meet the growing demand for qualified personnel in this field. The courses in this major include a concentration in both business and mathematics with applications to the computer through a study of various programming languages.



BACHELOR OF SCIENCE IN COMPUTER PROGRAMMING

	Semester	
	I	II
	Credits	
FRESHMAN		
Bible Survey-Old Testament, BI 101, 102.....	3	3
English Composition, EN 101, 102.....	3	3
Principles of Management, BU 101, 102.....	3	3
College Algebra, MS 201/College Trigonometry, MS 202.....	3	3
Computer Programming, CS 101.....	3	
Introduction to Data Processing, CS 102.....		3
Physical Education Activity, PE 101-108.....	1	1
Freshman Orientation, GS 101.....	1	
Modern Religious Issues, CE 106.....		2
	17	18
SOPHOMORE		
Literature Survey, LIT 211, 212, 221, or 222.....	3	3
Principles of Accounting, BU 201, 202.....	3	3
General Biology, SCI 101/Bible Survey-N.T., BI 103.....	3	3
Calculus, MS 211, 212.....	3	3
Computer Programming, CS 201/Pascal, CS 210.....	3	3
	15	15
JUNIOR		
History Survey, HY 201, 202, 221, or 222.....	3	3
Principles of Economics, ECO 201, 202.....	3	3
Statistics, MS 311, 312.....	3	3
Business Communications, BU 203/Speech, SP 162.....	3	3
FORTRAN, CS 310/COBOL, CS 320.....	3	3
Cost Accounting, BU 305.....	3	
	18	15
SENIOR		
Basic Bible Doctrines, BI 411, 412.....	3	3
Social Science Elective/Bible Elective.....	3	3
Assembly Language, CS 401/Linear Algebra, MS 401.....	3	3
Math Elective/Data Structures & Algorithms, CS 411.....	3	3
General Elective/General Psychology, PSY 271.....	2	3
Senior Seminar, GS 401.....	1	
	15	15

ASSOCIATE OF SCIENCE IN SECRETARIAL SCIENCE

Secretarial Science affords opportunity for trained secretaries to serve in Christian service areas such as churches, schools, and mission boards, and also to exert a positive influence in the business world. Graduates from the Secretarial Science major have demonstrated the Christian character, skill, and knowledge necessary to serve in the marketplace. Training includes preparation in the medical, legal, and business aspects of the secretarial field.

	Semester	
	I	II
	Credits	
<i>FIRST YEAR</i>		
English Composition, EN 101, 102	3	3
Bible Survey, Old Testament, BI 101	3	
Bible Survey, Old Testament, BI 102 or New Testament, BI 103		3
Secretarial Procedures, SEC 101		3
Introductory Typing, SEC 107/Intermediate Typing, SEC 108.....	3	3
Introductory Shorthand, SEC 110.....	3	
Intermediate Shorthand, SEC 111.....		3
Computer Programming, CS 101/College Mathematics, MS 101.....	3	3
Freshman Orientation, GS 101	1	
	16	18
<i>SECOND YEAR</i>		
Basic Bible Doctrines, BI 411, 412	3	3
Business Communications, BU 203	3	
Principles of Accounting, BU 201/202	3	3
Modern Religious Issues, CE 106.....		2
Advanced Typing, SEC 207/Transcription, SEC 208	3	3
Advanced Shorthand, SEC 210, 211	3	3
Senior Seminar, GS 401/Word Processing Concepts, SEC 221	0	3
	15	17



DIVISION OF EDUCATION AND PSYCHOLOGY

Dr. W. Hatten, Chairman
Miss B. Burke, Miss E. Knepper, Mr. B. Johnson, Dr. J. Morris
Mr. B. Puckett, Mr. L. Satmary, Mr. D. Wubbena

The Division of Education and Psychology consists of majors in Pre-school Education, Elementary Education (minor available in Special Education), Secondary Education (proficiencies in Bible, Business, English, Mathematics and Social Studies), Music Education, Physical Education, and Psychology.

The rapid growth of the Christian school movement in the United States has created a critical need for trained professional educators with a love for children and a love for God. Clearwater Christian College graduates are helping to fill this need each year.

A Christian Philosophy of Education

Clearwater Christian College stands firmly, without apology, upon the infallible and inerrant Word of God as the basis of true education. The Division of Education and Psychology instills within students a Christian philosophy of education which provides a Christian world view and a strategy of teaching and counseling based upon Biblical principles. Education and psychology are not neutral disciplines, and each individual's approach to these reflects his philosophy and training.

The model for all Christian educators is the example of the Lord Jesus Christ—the Master Teacher. Every teaching method and counseling approach is carefully studied to determine if it is consistent with God's Word and a Christian philosophy of education.

Graduates of this Division will be prepared to serve Christ in Christian and public schools. Each student is taught that the Christian teacher or counselor must be a positive Christian role model and must reject humanistic approaches which conflict with Biblical principles.

ASSOCIATE OF SCIENCE IN PRESCHOOL EDUCATION

	Semester I	Semester II
	Credits	Credits
<i>FIRST YEAR</i>		
Bible Survey-Old Testament, BI 101.....	3	
Bible Survey-Old Testament, BI 102 or New Testament, BI 103...		3
English Composition, EN 101, 102.....	3	3
Introduction to Education, ED 101.....	2	
Philosophy of Education, ED 201.....		2
Cognitive Experiences in the Preschool, PED 130.....	2	
Creative Experiences in the Preschool, PED 131.....		2
Freshman Orientation, GS 101/College Mathematics, MS 101.....	1	3
Teacher Aide Observation, PED 132.....	2	
General Psychology, PSY 271.....		3
Methods of Teaching Elementary Music, ED 313.....	3	
Modern Religious Issues, CE 106.....		2
	<hr/> 16	<hr/> 18
<i>SECOND YEAR</i>		
Basic Bible Doctrines, BI 411, 412.....	3	3
Human Growth & Development, PSY 283.....	3	
Materials & Methods of Education, ED 204.....	3	
Curriculum & Instruction, ED 202/Children's Literature, ED 310.....	2	3
General Elective/Teaching Reading in the School, ED 312.....	3	3
Methods of Teaching Elementary Physical Education, ED 317.....		2
Senior Seminar, GS 401/Student Teaching, PED 200.....	1	4
	<hr/> 15	<hr/> 15



BACHELOR OF SCIENCE IN ELEMENTARY EDUCATION

Semester I II Credits

FRESHMAN

Bible Survey-Old Testament, BI 101, 102.....	3	3
English Composition, EN 101, 102.....	3	3
General Biology, SCI 101/Physical Science SCI 102.....	3	3
Physical Education Activity, PE 101-108.....	1	1
Freshman Orientation, GS 101.....	1	
Modern Religious Issues, CE 106.....		2
Introduction to Education, ED 101/Speech, SP 162.....	2	3
Music Appreciation, MU 103/General Psychology, PSY 271.....	3	3
	16	18

SOPHOMORE

Literature Survey, LIT 211, 212, 221, or 222.....	3	3
History Survey HY 201, 202, 221, or 222.....	3	3
Human Growth & Development, PSY 283.....	3	
College Mathematics, MS 101.....		3
Teacher Aide Observation, ED 203.....	2	
Bible Survey-New Testament, BI 103.....		3
Curriculum & Instruction for Elementary Schools, ED 202.....	3	
Philosophy of Education, ED 201.....		2
Introduction to Exceptional Children, SED 200.....	3	
Teaching Reading in the School, ED 312.....		3
	17	17

JUNIOR

Basic Bible Doctrines, BI 411, 412.....	3	3
Methods of Teaching Elementary Music, ED 313.....	3	
Methods of Teaching Elementary Social Studies, ED 315.....		2
Methods of Teaching Elementary Language Arts, ED 314.....	2	
Methods of Teaching Elementary Science, ED 318.....		2
Materials & Methods of Education, ED 204.....	3	
Children's Literature, ED 310.....		3
Communications Elective/Health Education, ED 311.....	3	2
Bible Elective/Social Science Elective.....	3	3
Methods of Teaching Elementary P.E., ED 317.....		2
	17	17

SENIOR

Methods of Teaching Elementary Mathematics, ED 316.....	2	
Methods of Teaching Elementary Bible, ED 319.....	2	
Methods of Teaching Elementary Art, ED 320.....	2	
Tests & Measurements, ED 404.....	2	
Senior Seminar, GS 401/Education Seminar, ED 491.....	1	1
*Administration & Supervision for Teachers, ED 402.....		2
General Electives/Student Teaching, ED 450.....	6	8
	15	11

*Offered as an intensive class over a six-week period immediately following the Student Teaching experience.

BACHELOR OF SCIENCE IN ELEMENTARY EDUCATION

Minor: Special Education

Elementary Education majors may obtain a teaching minor in Special Education. Students who choose to receive this minor may specialize in either Mental Retardation or Learning Disabilities. In addition to SED 200, Introduction to Exceptional Children, which is included in the elementary education program, required courses are:

	Semester Hours
a. SED 210 Language Development & Speech Disabilities	3
b. SED 300 Introduction to Mental Retardation or SED 330 Theories of Learning Disabilities	3
c. SED 320 Curriculum & Methods for the Trainable Mentally Retarded or SED 340 Diagnosis of the Learning Disabled	3
d. SED 321 Curriculum & Methods for the Educable Mentally Retarded or SED 341 Individualized Instruction & Classroom Management for the Learning Disabled	3
e. SED 450 Student Teaching: Exceptional Children	6
f. *PE 361 Methods of Teaching Adaptive Physical Education	2
g. A total of three hours from the following: SED 350 Student Practicum in Special Education, (1, 2, or 3 hours) SED 491 Special Education Seminar, (1, 2, or 3 hours)	3
Total:	23

* Taken in lieu of ED 317, Methods of Teaching Elementary Physical Education.

BACHELOR OF SCIENCE IN SECONDARY EDUCATION

Proficiency: Bible

	Semester I	Semester II
Credits	Credits	Credits
FRESHMAN		
Bible Survey-Old Testament, BI 101, 102.....	3	3
English Composition, EN 101, 102.....	3	3
General Biology, SCI 101/Physical Science, SCI 102.....	3	3
Physical Education Activity, PE 101-108.....	1	1
Introduction to Education, ED 101.....	2	
Philosophy of Education, ED 201.....		2
Music Appreciation, MU 103/General Psychology, PSY 271.....	3	3
Freshman Orientation, GS 101.....	1	
Modern Religious Issues, CE 106.....		2
	16	17
SOPHOMORE		
Literature Survey, LIT 211, 212, 221, or 222.....	3	3
History Survey, HY 201, 202, 221, or 222.....	3	3
Human Growth & Development, PSY 283/Speech, SP 162.....	3	3
Survey of Christian Education, CE 111.....	3	
Bible Survey-N.T., BI 103.....		3
College Mathematics, MS 101.....		3
Ancient History, HY 301, 302.....	3	3
Life of Christ, BI 201 or John's Gospel, BI 250.....	3	
	18	18
JUNIOR		
Basic Bible Doctrines, BI 411, 412.....	3	3
Church History, HY 401, 402.....	3	3
Biblical Introduction, BI 301, 302.....	3	3
Comparative Religions, BI 307/Cults, BI 308.....	3	3
Romans, BI 352/Isaiah, BI 365.....	3	3
Curriculum & Instruction, ED 303.....	3	3
	15	18
SENIOR		
Introduction to Philosophy, PHY 201.....	3	
Methods of Teaching Secondary Bible, ED 329.....	3	
Tests & Measurements, ED 404.....	2	
Senior Seminar, GS 401/Education Seminar, ED 491.....	1	1
*Administration & Supervision for Teachers, ED 402.....		2
Bible Electives/Student Teaching, ED 450.....	6	8
	15	11

*Offered as an intensive class over a six-week period immediately following the Student Teaching experience.

BACHELOR OF SCIENCE IN SECONDARY EDUCATION

Proficiency: Business

	Semester I	Semester II
Credits	Credits	Credits
FRESHMAN		
Bible Survey-Old Testament, BI 101, 102.....	3	3
English Composition, EN 101, 102.....	3	3
General Biology, SCI 101/College Mathematics, MS 101.....	3	3
Physical Education Activity, PE 101-108.....	1	1
Music Appreciation, MU 103/General Psychology, PSY 271.....	3	3
Introductory Typing, SEC 107/Intermediate Typing, SEC 108.....	3	3
Freshman Orientation, GS 101.....	1	
Modern Religious Issues, CE 106.....		2
	17	18
SOPHOMORE		
Literature Survey, LIT 211, 212, 221, or 222.....	3	3
History Survey, HY 201, 202, 221, or 222.....	3	3
Beginning Shorthand, SEC 110.....	3	
Intermediate Shorthand, SEC 111.....		3
Introduction to Education, ED 101.....	2	
Philosophy of Education, ED 201.....		2
Advanced Typing, SEC 107/Bible Survey-N. T., BI 103.....	3	3
Human Growth & Development, PSY 283/Speech, SP 162.....	3	3
	17	17
JUNIOR		
Basic Bible Doctrines, BI 411, 412.....	3	3
Principles of Accounting, BU 201, 202.....	3	3
Advanced Shorthand, SEC 210.....	3	
Word Processing Concepts, SEC 221.....		3
College Algebra, MS 201/Curriculum & Instruction, ED 303.....	3	3
Computer Programming, CS 101.....	3	
Economic Concepts, ECO 203.....		3
Introduction to Data Processing, CS 102.....		3
	15	18
SENIOR		
Methods of Teaching Secondary Business, ED 327.....	3	
Tests & Measurements, ED 404.....	2	
General Elective.....	3	
Business Communications, BU 203.....	3	
Senior Seminar, GS 401/Education Seminar, ED 491.....	1	1
*Administration & Supervision for Teachers, ED 402.....		2
Bible Elective/Student Teaching, ED 450.....	3	8
	15	11

*Offered as an intensive class over a six-week period immediately following the Student Teaching experience.

BACHELOR OF ARTS IN SECONDARY EDUCATION

Proficiency: English

	Semester I	Semester II
Credits		
FRESHMAN		
Bible Survey-Old Testament, BI 101, 102.....	3	3
English Composition, EN 101, 102.....	3	3
General Biology, SCI 101/Physical Science, SCI 102.....	3	3
Physical Education Activity, PE 101-108.....	1	1
Communications Elective/Bible Survey-New Testament, BI 103.....	3	3
Social Science Elective/Modern Religious Issues, CE 106.....	3	2
Freshman Orientation, GS 101/General Psychology, PSY 271.....	1	3
	<u>17</u>	<u>18</u>
SOPHOMORE		
Literature Survey, LIT 211, 212, 221, or 222.....	3	3
History Survey, HY 201, 202, 221, or 222.....	3	3
Introduction to Education, ED 101.....	2	
Philosophy of Education, ED 201.....		2
Advanced Composition, EN 201/Oral Interpretation, SP 301.....	3	3
Music Appreciation, MU 103/College Mathematics, MS 101.....	3	3
Human Growth & Development, PSY 283/Speech, SP 162.....	3	3
	<u>17</u>	<u>17</u>
JUNIOR		
Basic Bible Doctrines, BI 411, 412.....	3	3
*Intermediate Foreign Language.....	3	3
Advanced Grammar, EN 321/Shakespeare, LIT 332.....	3	3
Literature Elective/Milton, LIT 334.....	3	3
Curriculum & Instruction, ED 303.....		3
Creative Writing, EN 304.....		3
	<u>12</u>	<u>18</u>
SENIOR		
Methods of Teaching Secondary English, ED 321.....	3	
Contemporary Literature, LIT 441.....	3	
Literary Criticism, LIT 490.....	3	
Tests & Measurements, ED 404/Chaucer, LIT 431.....	2	3
Senior Seminar, GS 401/Education Seminar, ED 491.....	1	1
**Administration & Supervision for Teachers, ED 402.....		2
Bible Elective/Student Teaching, ED 450.....	3	8
	<u>15</u>	<u>14</u>

*If the student does not achieve a satisfactory score on the language placement test, six credit hours of an elementary language must be added to this program.

**Offered as an intensive class over a six-week period immediately following the Student Teaching experience.

BACHELOR OF SCIENCE IN SECONDARY EDUCATION

Proficiency: Mathematics

	Semester I	Semester II
Credits		
FRESHMAN		
Bible Survey-Old Testament, BI 101, 102.....	3	3
English Composition, EN 101, 102.....	3	3
General Biology, SCI 101/General Psychology, PSY 271.....	3	3
Physical Education Activity, PE 101-108.....	1	1
College Algebra, MS 201/College Trigonometry, MS 202.....	3	3
Social Science Elective/Modern Religious Issues, CE 106.....	3	2
Freshman Orientation, GS 101.....	1	
	<u>17</u>	<u>15</u>
SOPHOMORE		
Literature Survey, LIT 211, 212, 221, or 222.....	3	3
History Survey, HY 201, 202, 221, or 222.....	3	3
Music Appreciation, MU 103/Speech, SP 162.....	3	3
Introduction to Education, ED 101.....	2	
Philosophy of Education, ED 201.....		2
Computer Programming, CS 101/Bible Survey-N.T., BI 103.....	3	3
Calculus, MS 211, 212.....	3	3
	<u>17</u>	<u>17</u>
JUNIOR		
Basic Bible Doctrines, BI 411, 412.....	3	3
Human Growth & Development, PSY 283/Pascal, CS 210.....	3	3
Statistics, MS 311, 312.....	3	3
Computer Programming, CS 201/Bible Elective.....	3	3
Communications Elective/Linear Algebra, MS 401.....	3	3
Curriculum & Instruction, ED 303.....		3
	<u>15</u>	<u>18</u>
SENIOR		
Differential Equations, MS 421.....	3	
FORTRAN, CS 310.....	3	
Methods of Teaching Secondary Mathematics, ED 328.....	3	
Tests & Measurements, ED 404.....	2	
Senior Seminar, GS 401/Education Seminar, ED 491.....	1	1
*Administration & Supervision for Teachers, ED 402.....		2
General Electives/Student Teaching, ED 450.....	6	8
	<u>18</u>	<u>11</u>

*Offered as an intensive class over a six-week period immediately following the Student Teaching experience.

BACHELOR OF SCIENCE IN SECONDARY EDUCATION

Proficiency: Social Studies

	Semester	
	I	II
	Credits	
FRESHMAN		
Bible Survey-Old Testament, BI 101, 102.....	3	3
English Composition, EN 101, 102	3	3
General Biology, SCI 101/Physical Science, SCI 102.....	3	3
Communications Elective/Speech, SP 162.....	3	3
Music Appreciation, MU 103/General Psychology, PSY 271.....	3	3
Physical Education Activity, PE 101-108.....	1	1
Freshman Orientation, GS 101.....	1	
Modern Religious Issues, CE 106.....		2
	17	18
SOPHOMORE		
Literature Survey, LIT 211, 212, 221, or 222	3	3
United States History, HY 201, 202	3	3
Introduction to Education, ED 101	2	
Philosophy of Education, ED 201.....		2
Human Growth & Development, PSY 283.....	3	
Curriculum & Instruction, ED 303.....		3
General Elective/American Government, POS 205.....	3	3
General Sociology, SY 261.....	3	
Bible Survey-New Testament, BI 103.....		3
	17	17
JUNIOR		
Basic Bible Doctrines, BI 411, 412	3	3
World Geography, GY 201, 202.....	3	3
Economic Concepts, ECO 203		3
Communism, POS 305		3
History of Western Civilization, HY 221, 222.....	3	3
History Elective/College Mathematics, MS 101.....	3	3
Methods of Teaching Secondary Social Studies, ED 323.....	3	
	15	18
SENIOR		
Tests & Measurements, ED 404.....	2	
Bible Elective.....	3	
History Elective.....	3	
History Seminar, HY 491.....	3	
Senior Seminar, GS 401/Education Seminar, ED 491	1	1
* Administration & Supervision for Teachers, ED 402.....		2
General Elective/Student Teaching, ED 450.....	3	8
	15	11

* Offered as an intensive class over a six-week period immediately following the Student Teaching experience.

BACHELOR OF SCIENCE* IN MUSIC EDUCATION

	Semester I	Semester II
	Credits	Credits
FRESHMAN		
Bible Survey-Old Testament, BI 101, 102.....	3	3
English Composition, EN 101, 102.....	3	3
General Biology, SCI 101/College Mathematics, MS 101.....	3	3
Physical Education Activity, PE 101-108.....	1	1
Music Theory, MU 123, 124.....	3	3
Applied Music (Principal), MU 191, 192.....	2	2
Freshman Orientation, GS 101.....	1	
Modern Religious Issues, CE 106.....		2
College Choir, MU 159, 160.....	0	0
	16	17
SOPHOMORE		
Literature Survey, LIT 211, 212, 221, or 222.....	3	3
History Survey, HY 201, 202, 221, or 222.....	3	3
Introduction to Education, ED 101/Speech, SP 162.....	2	3
Music Theory, MU 223, 224.....	3	3
Applied Music (Principal), MU 291, 292.....	2	2
Applied Music (Secondary), MU 281, 282.....	1	1
Social Science Elective/Bible Survey-N.T., BI 103.....	3	3
College Choir, MU 161, 162.....	0	0
	17	18
JUNIOR		
Basic Bible Doctrines, BI 411, 412.....	3	3
Methods of Teaching Elementary Music, ED 313.....	3	
Methods of Teaching Secondary Music, ED 322.....		3
Music History, MU 213, 214.....	2	2
Sacred Music Materials, MU 354/Conducting, MU 352.....	2	2
Applied Music (Principal), MU 391, 392.....	2	2
Brass Techniques, MU 241/Percussion Techniques, MU 242.....	1	1
Curriculum & Instruction, ED 202 or 303.....	3	
General Psychology, PSY 271.....		3
Human Growth & Development, PSY 283.....	3	
Philosophy of Education, ED 201.....		2
College Choir, MU 163, 164.....	0	0
	19	18
SENIOR		
Bible Elective.....	3	
Tests & Measurements, ED 404.....	2	
Communications Elective.....	3	
Science or Mathematics Elective.....	3	
Applied Music (Principal), MU 491.....	2	
Keyboard Harmony, MU 490.....	1	
* Administration & Supervision for Teachers, ED 402.....		2
String Techniques, MU 243/Woodwind Techniques, MU 244.....	1	1
Senior Seminar, GS 401/Education Seminar, ED 491.....	1	1
College Choir, MU 165/Student Teaching, ED 450.....	0	8
	16	12

* A Bachelor of Arts degree is available for this program by adding 6 hours of foreign language and 3 hours of philosophy.

** Offered as an intensive class over a six-week period immediately following the Student Teaching experience.

PHYSICAL EDUCATION

The Physical Education major is designed to prepare students for professional work in an elementary or secondary school as a physical education instructor and coach. Graduates from our physical education program are also prepared to direct school or community recreation. Teacher certification for this field extends from K through grade 12.

The physical education classes provide a program which enhances the physical, social, mental, and spiritual development of the individual (Luke 2:52). The student/athlete will become physically fit and learn proper techniques for teaching and coaching sports.

Physical education teachers and coaches should have the proper Christian philosophy of athletics. Students are imbued with the ideal of doing their best (Eccl. 9:10), playing to win (I Cor. 9:24), and having a professional attitude (Rom. 12:11) and appearance (Rom. 12:1).



BACHELOR OF SCIENCE IN PHYSICAL EDUCATION

	Semester	
	I	II
	Credits	
FRESHMAN		
Bible Survey-Old Testament, BI 101, 102.....	3	3
English Composition, EN 101, 102.....	3	3
Physical Education Activity, PE 101-108.....	1	1
General Biology, SCI 101/College Mathematics, MS 101.....	3	3
Principles of Physical Education, PE 151/First Aid, PE 121.....	2	2
Music Appreciation, MU 103/General Psychology, PSY 271.....	3	3
Freshman Orientation, GS 101.....	1	
Modern Religious Issues, CE 106.....		2
	16	17

SOPHOMORE		
Literature Survey, LIT 211, 212, 221, or 222.....	3	3
Anatomy, SCI 204/Physiology, SCI 205.....	3	3
Communications Elective/Health Education, ED 311.....	3	2
Skills Laboratory, PE 201-204/Bible Survey-N.T., BI 103.....	2	3
Human Growth & Development, PSY 283/Speech, SP 162.....	3	3
Introduction to Education, ED 101.....	2	
Philosophy of Education, ED 201.....		2
Methods of Teaching Adaptive PE, PE 361.....		2
	16	18

JUNIOR		
Basic Bible Doctrines, BI 411, 412.....	3	3
History Survey, HY 201, 202, 221, or 222.....	3	3
Theory & Practice in Coaching Sports, PE 211-215.....	2	2
Skills Laboratory, PE 201-204.....	2	2
Curriculum & Instruction, ED 202 or 303.....	3	
Athletic Training, PE 381.....		2
Kinesiology, PE 378/Exercise Physiology, PE 478.....	3	3
School & Community Recreation, PE 321.....	2	
Methods of Teaching Elementary Physical Education, ED 317.....		2
	18	17

SENIOR		
Methods of Teaching Secondary Physical Education, ED 324.....	2	
Organization & Administration of Physical Education, PE 472.....	3	
Theory & Practice in Coaching Sports, PE 211-215.....	2	
Tests & Measurements, ED 404.....	2	
Social Science Elective.....	3	
Senior Seminar, GS 401/Education Seminar, ED 491.....	1	1
*Administration & Supervision for Teachers, ED 402.....		2
Bible Elective/Student Teaching, ED 450.....	3	8
	16	11

*Offered as an intensive class over a six-week period immediately following the Student Teaching experience.

BACHELOR OF ARTS IN PSYCHOLOGY

	Semester	
	I	II
	Credits	
FRESHMAN		
Bible Survey-Old Testament, BI 101, 102.....	3	3
English Composition, EN 101, 102.....	3	3
General Biology, SCI 101/Physical Science, SCI 102.....	3	3
Physical Education Activity, PE 101-108.....	1	1
Music Appreciation, MU 103/General Psychology, PSY 271.....	3	3
Communications Elective/Modern Religious Issues, CE 106.....	3	2
Freshman Orientation, GS 101.....	1	
	17	15
SOPHOMORE		
Literature Survey, LIT 211, 212, 221, or 222.....	3	3
History Survey, HY 201, 202, 221, or 222.....	3	3
*Intermediate Foreign Language.....	3	3
Human Growth & Development, PSY 283, 301.....	3	3
General Elective/Speech, SP 162.....	3	3
Bible Survey-New Testament, BI 103.....		3
	15	18
JUNIOR		
Personality Theory, PSY 322/Abnormal Psychology, PSY 328....	3	3
Experimental Psychology, PSY 305.....	3	
Introduction to Clinical & Counseling Psychology, PSY 325.....		3
Introduction to Philosophy, PHI 201.....	3	
Introduction to Exceptional Children, SED 200.....		3
Bible Elective/College Mathematics, MS 101.....	3	3
Marriage & the Family, PSY 337/General Elective.....	3	2
Psychological Testing, PSY 311.....		3
	15	17
SENIOR		
Basic Bible Doctrines, BI 411, 412.....	3	3
Counseling Through the Scriptures, PSY 426.....	3	
Techniques of Christian Counseling, PSY 475.....		3
Theories & Systems of Psychology, PSY 454.....	3	
Social Science Elective/Social Psychology, PSY 425.....	3	3
General Electives.....	3	3
Senior Seminar, GS 401/Psychology Seminar, PSY 491.....	1	3
	16	15

*If the student does not achieve a satisfactory score on the language placement test, six credit hours of an elementary language must be added to this program.

DIVISION OF LITERATURE AND FINE ARTS

Dr. J. Macfarlane, Chairman

Mr. C. Boatright, Mrs. D. Hamby, Mrs. C. Ladner, Mrs. M. Pinckney
Mr. J. Steele, Mrs. E. Werner, Miss Jan Anderson

The Division of Literature and Fine Arts consists of majors in English and Music. The courses offered by this division form the foundation of the liberal arts education. Courses in English, literature, speech, foreign language, history, and music are the humanities in the classical sense and are essential to the liberal arts program of Clearwater Christian College. To fulfill the foreign language requirement, instruction is offered at the elementary and intermediate levels of Spanish and German with attention given to culture and literature.

ENGLISH

The major in English seeks to develop in the student the ability to think, write, and speak clearly and effectively and to understand, enjoy, and evaluate literature by becoming acquainted with the works of the world's major writers and their social and intellectual backgrounds. This major is especially profitable for students who wish to enter the Christian ministry, or become English teachers, librarians, or lawyers, or for those who desire it for a general humanities background.



BACHELOR OF ARTS IN ENGLISH

Semester I II Credits

FRESHMAN

Bible Survey-Old Testament, BI 101, 102.....	3	3
English Composition, EN 101, 102.....	3	3
General Biology, SCI 101/Physical Science, SCI 102.....	3	3
Physical Education Activity, PE 101-108.....	1	1
Music Appreciation, MU 103/Modern Religious Issues, CE 106....	3	2
Freshman Orientation, GS 101/Speech, SP 162.....	1	3
General Elective/General Psychology, PSY 271.....	3	3
	<u>17</u>	<u>18</u>

SOPHOMORE

American Literature Survey, LIT 211, 212.....	3	3
History of Western Civilization, HY 221, 222.....	3	3
Introduction to Philosophy, PHI 201/Social Science Elective.....	3	3
Bible Elective/Bible Survey-New Testament, BI 103.....	3	3
Advanced Composition, EN 201/College Mathematics, MS 101..	3	3
United States or British History, HY 202 or 311.....		3
	<u>15</u>	<u>18</u>

JUNIOR

English Literature Survey, LIT 221, 222.....	3	3
*Intermediate Foreign Language.....	3	3
Advanced Grammar, EN 321/Creative Writing, EN 304.....	3	3
Literature Electives.....	3	3
Communications Elective/Shakespeare, LIT 332.....	3	3
	<u>15</u>	<u>15</u>

SENIOR

Basic Bible Doctrines, BI 411, 412.....	3	3
Contemporary Literature, LIT 441/Milton, LIT 334.....	3	3
Literary Criticism, LIT 490/Chaucer, LIT 431.....	3	3
Literature Elective/Oral Interpretation, SP 301.....	3	3
General Electives.....	3	2
Senior Seminar, GS 401.....	1	
	<u>16</u>	<u>14</u>

*If the student does not achieve a satisfactory score on the language placement test, six credit hours of an elementary language must be added to this program.

MUSIC

The major in Music offers a study designed to prepare students for professional work in the church or the school and to give proper background to those graduates who seek further preparation in graduate institutions. If a Bachelor of Arts in Music Education is desired, a minimum of two additional semesters of training in education is required to complete the program. (Refer to major in Music Education for courses needed). The major in Music provides individual instruction in voice, piano, organ, or brass. This is a performance and theory major giving gifted musicians ample opportunity to express their God-given talents through College Choir and Chapel Singers concerts, chapel solos, and recitals.

It is the desire of the College that our music honor and glorify the Lord. Accordingly, our convictions prohibit use of rock music in any form on the campus.



BACHELOR OF ARTS IN MUSIC

Semester I II Credits

FRESHMAN

Bible Survey-Old Testament, BI 101, 102.....	3	3
English Composition, EN 101, 102.....	3	3
General Biology, SCI 101/Physical Science, SCI 102.....	3	3
Physical Education Activity, PE 101-108.....	1	1
Music Theory, MU 123, 124.....	3	3
Applied Music (Principal), MU 191-8.....	2	2
Applied Music (Secondary), MU 181, 182.....	1	1
Freshman Orientation, GS 101.....	1	
College Choir, MU 159, 160.....	0	0
	17	16

SOPHOMORE

Literature Survey, LIT 211, 212, 221, or 222.....	3	3
History Survey, HY 201, 202, 221, or 222.....	3	3
Music History, MU 213, 214.....	2	2
Music Theory, MU 223, 224.....	3	3
Applied Music (Principal), MU 291-8.....	2	2
Applied Music (Secondary), MU 281, 282.....	1	1
Introduction to Philosophy, PHI 201.....	3	
Modern Religious Issues, CE 106.....		2
College Choir, MU 161, 162.....	0	0
	17	16

JUNIOR

Foreign Language.....	3	3
Form & Analysis, MU 323/Orchestration & Arranging, MU 324 ..	3	3
Applied Music (Principal), MU 391-8.....	2	2
Brass Techniques MU 241/Percussion Techniques, MU 242	1	1
Sacred Music Materials, MU 354/Conducting, MU 352.....	2	2
Bible Elective/Bible Survey-New Testament, BI 103.....	3	3
Methods of Teaching Elementary Music, ED 313.....	3	
Methods of Teaching Secondary Music, ED 322.....		3
College Choir, MU 163, 164	0	0
Junior Recital.....		0
	17	17

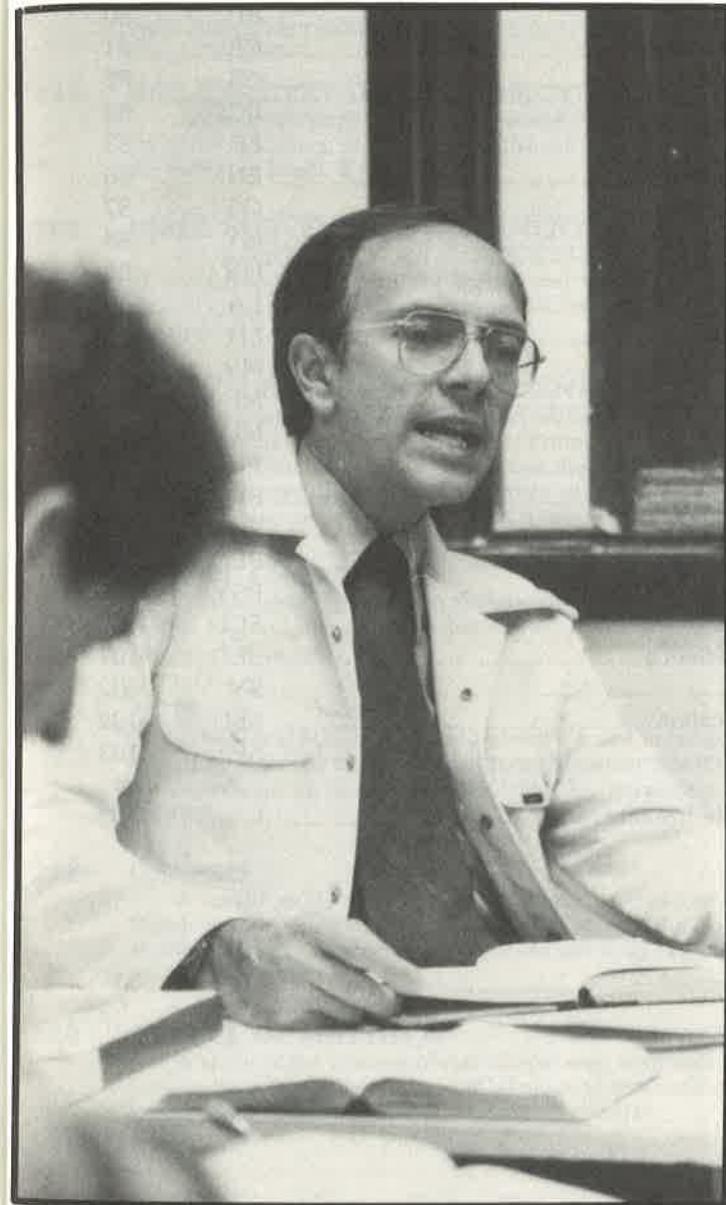
SENIOR

Basic Bible Doctrines, BI 411, 412	3	3
Applied Music (Principal), MU 491-8.....	2	2
String Techniques, MU 243/Woodwind Techniques, MU 244.....	1	1
Social Science Elective/Speech, SP 162.....	3	3
Second Foreign Language.....	3	3
Keyboard Harmony, MU 490/Counterpoint, MU 423	1	3
Senior Seminar, GS 401/Senior Recital.....	1	0
College Choir, MU 165, 166	0	0
	14	15



"Apply thine heart unto instruction
and thine ears to the words of
knowledge."

Proverbs 23:12



Course Descriptions

Clearwater Christian College

Course Abbreviations

		Page Number
Bible	BI	76
Business	BU	80
Christian Education	CE	81
Computer Science	CS	82
Economics	ECO	83
Education	ED	83
English	EN	86
General Studies	GS	87
Geography	GY	88
History	HY	88
Languages	LA	89
Literature	LIT	90
Mathematics	MS	91
Missions	MI	92
Music	MU	92
Philosophy	PHI	96
Physical Education	PE	97
Political Science	POS	98
Preschool Education	PED	99
Psychology	PSY	99
Science	SCI	100
Secretarial Science	SEC	101
Sociology	SY	102
Special Education	SED	102
Speech	SP	103
Evening Bible Institute	I	107

BI

Courses In Bible

The Old and New Testament Bible Survey courses are required courses for all students and are prerequisites for all Bible courses as follows:

BI 101 and 102 are prerequisites for Basic Bible Doctrines, BI 411, 412 and all Old Testament courses.

BI 103 is a prerequisite for Basic Bible Doctrines, BI 411, 412 and all New Testament courses except the Life of Christ, BI 201 and John's Gospel BI 250.

101 BIBLE SURVEY-OLD TESTAMENT I

An in-depth study of Genesis through Ruth with special emphasis on major doctrines, prophecy, and the chronological development of the nation of Israel. **3 credits.**

102 BIBLE SURVEY-OLD TESTAMENT II

An in-depth study of the chronological development of the nation of Israel from I Samuel through the end of Old Testament history. Special emphasis is given to the poetical books and the major and minor prophets. **3 credits.**

103 BIBLE SURVEY-NEW TESTAMENT

A foundational survey of the intertestament period and the world as it existed in New Testament times. Primary focus is on the content of the New Testament with emphasis on the special characteristics and the key passages of each book. A survey of the biographical highlights of Jesus Christ and the Apostle Paul is included. **3 credits.**

201 LIFE OF CHRIST

A harmonistic chronological study of the significant events in the earthly life and ministry of Jesus Christ from His incarnation to His ascension. **3 credits.**

221 ACTS

A historical and topical study of the life and message of the early church as recorded in the book of Acts. Particular attention is given to the conversion of the Apostle Paul and his missionary out-reach. **3 credits.**

222 GENESIS

A careful study of the book of Genesis with special emphasis on Mosaic authorship, special creation, the fall of man, the Noachian flood, and the call and development of the chosen seed centered in the Patriarchs. **3 credits.**

240 GOSPEL OF MATTHEW

A study of the content of this Gospel with emphasis on its distinctive teaching. Special attention will be given to understand the Sermon on the Mount and the Olivet Discourse. **3 credits.**

- 250 JOHN'S GOSPEL**
An analytical study of John's Gospel with special emphasis on Johannine theology and the deity of Christ. **3 credits.**
- 251 GENERAL EPISTLES**
An analytical study of the seven New Testament epistles which comprise the letters written to the universal church. Particular emphasis is given to the main teachings of each author in an effort to summarize the main thrust of his writing. **3 credits.**
- 258 PRISON EPISTLES**
A study of the books of Ephesians, Philippians, Colossians, and Philemon with emphasis on the position of the believer in Christ and his consequent opportunities and responsibilities. **3 credits.**
- 259 PASTORAL EPISTLES**
An exegetical and practical study of I and II Timothy and Titus with emphasis on pastoral theology. Recommended for ministerial students. **3 credits.**
- 263 POETICAL BOOKS**
An exegetical study of the Old Testament poetical books of Job, Psalms, Proverbs, Ecclesiastes, and the Song of Solomon. Emphasis is placed on composition of Hebrew poetry and figures of speech. **3 credits.**
- 271 CORINTHIAN EPISTLES**
A problematical and practical study of Paul's Corinthian letters. Application of principles to present day situations. **3 credits.**
- 301 BIBLICAL INTRODUCTION-OLD TESTAMENT**
A study of the inspiration, canon, text, and versions of the Old Testament. Includes a general introduction to the Old Testament and a special consideration of each book relative to questions of date and authorship. Some emphasis is given to the issues raised by the destructive claims of higher criticism, and answers are given based on the conservative position. **3 credits.**
- 302 BIBLICAL INTRODUCTION-NEW TESTAMENT**
A survey of the development and characteristics of the language, canon, and text of the New Testament as well as the authorship, date, place of writing, original recipients, occasion, purpose, and special problems of the individual books. **3 credits.**
- 307 COMPARATIVE RELIGIONS**
A comparative study of the world's major religions, their origins, histories, beliefs, and practices. Special emphasis is placed on their contrast with Christianity. **3 credits.**
- 308 CULTS**
A survey of the major cults, including new groups, their origins, histories, doctrines, and practices. Contrasts with Christianity are also included. **3 credits.**

- 330 EZEKIEL**
A study will be made of the contents of this prophetic book. The visions and prophecies of Ezekiel will be compared with other portions of the prophetic scriptures, and an endeavor will be made to understand the prophet himself and his unique place in the revelation of God. **3 credits.**
- 334 DANIEL**
An analytical study of Daniel from the premillennial viewpoint. Special emphasis on historical and prophetic interpretation. **3 credits.**
- 337 MINOR PROPHETS**
A historical and premillennial study of the message of the twelve minor prophets with special emphasis on Messianic predictions. **3 credits.**
- 365 ISAIAH**
An inductive study of the message and content of this prophetic book. Consideration is given to critical problems and historical background. Special attention is given to those prophecies related to Jesus Christ and future times. **3 credits.**
- 370 INTERTESTAMENT PERIOD**
A detailed study of the so-called 400 silent years between the close of the Old Testament canon and the appearance of Christ. Events such as the Maccabean uprising, the Greek influence in Palestine, and the Roman presence in Bible lands are covered. Emphasis is given to the history of the various sects of the Jews which are important in New Testament times. **3 credits.**
- 401 BIBLICAL ARCHAEOLOGY**
A study of the significant archaeological discoveries that shed light on the history and culture of the nation of Israel and corroborate the historical accuracy of the Old Testament record. **3 credits.**
- 403 BOOK OF REVELATION**
An examination of the authorship, date, and the content of the book of Revelation. Methods of interpretation are examined with special attention to the millennial question. **3 credits.**
- 406 METHODS OF BIBLE STUDY**
A study of the principles used in the interpretation of the Scriptures and the objectives and methods to be used in creative Bible teaching. Illustrations from both the Old and New Testaments are used in the study. **3 credits.**
- 411 BASIC BIBLE DOCTRINES I**
An in-depth study of the following Bible Doctrines: Theism, Bibliology, Theology, Angelology, and Anthropology. **3 credits.**
- 412 BASIC BIBLE DOCTRINE II**
An in-depth study of the following Bible Doctrines: Soteriology, Ecclesiology, and Eschatology. **3 credits.**

451 PROPHECY

A detailed study of the prophetic events surrounding Christ's second advent as set forth in the Scriptures with special emphasis on the book of Daniel, II Thessalonians, and Revelation. **3 credits.**

452 ROMANS

A contextual exposition of the book of Romans. Emphasis is placed on justification, sanctification, and Christian responsibilities. **3 credits.**

456 HEBREWS

A contextual study of the book of Hebrews with emphasis on the superiority of Christ, His high priestly work, and the warnings and encouragements concerning Christian behavior. **3 credits.**

491 BIBLE SEMINAR

Interaction of faculty with advanced students in an area of Biblical study. **1, 2, or 3 credits.**

BU

Courses in Business

101 PRINCIPLES OF MANAGEMENT I

Addresses the nature of management work, management theories, the organization system, and managing for high performance. Emphasis is placed on the three basic management skills; goal setting, decision making, and interpersonal relations. **3 credits.**

102 PRINCIPLES OF MANAGEMENT II

Prerequisite: BU 101. Continued studies in management principles with discussion on the formulation and implementation of long-term plans (strategic management), and short-term, day-to-day activities (tactical management). Develops the work at strategic and tactical levels in terms of the classical management functions: planning, organizing, staffing, directing, and controlling. **3 credits.**

201 PRINCIPLES OF ACCOUNTING I

Prerequisite: MS 101 or equivalent. An introduction to fundamental accounting procedures: journalizing and posting transactions, managing payroll, accounting for sales and purchases, and preparing worksheets and financial statements. **3 credits.**

202 PRINCIPLES OF ACCOUNTING II

Prerequisite: BU 201. Continued studies in accounting procedures with emphasis on notes and interest, inventory, depreciation, owner's equity, and interim financial statements. **3 credits.**

203 BUSINESS COMMUNICATIONS

Designed to teach the mechanics and principles of effective business correspondence. Requires the student to compose various types of business letters, memorandums, and reports. **3 credits.**

303 BUSINESS LAW I

A study of the nature, classification, and characteristics of law. Examines the legal principles of contracts, torts, business crimes, sales, bailments, and personal property. **3 credits.**

304 BUSINESS LAW II

Prerequisite: BU 303. A study of the legal principles of agency, partnerships and corporations, negotiable instruments, insurance, mortgages, leases, and bankruptcy. **3 credits.**

305 COST ACCOUNTING

Prerequisite: BU 202. A study of the fundamental principles and applications of job order, process, and standard cost accounting systems. Discussion of the techniques of managerial cost applications focuses on cost behavior analysis, cost-volume-profit decisions, breakeven analysis, direct costing, and distribution cost analysis. **3 credits.**

401 CORPORATE FINANCE

Prerequisite: BU 202. A survey of the various methods used to finance industry in the United States. Major topics of study include financial analysis and planning, working capital management, capital budgeting, capital structure, long-term financing, and cost of capital. **3 credits.**

402 TAXATION

An introduction to the federal income tax structure, with emphasis on inclusions and exclusions to income, allowed deductions, capital gains and losses, and tax computation as they apply to personal and business returns. **3 credits.**

403 PRINCIPLES OF MARKETING

An introduction to the marketing concept, with attention given to the market place, marketing mix, market strategy, marketing perspectives, and consumer buying behavior. **3 credits.**

404 LABOR & MANAGEMENT RELATIONS

Prerequisite: BU 304. Studies the history and growth of American trade unionism, development of labor legislation, and the role of management and unions in the private and public sectors. Examines the processes, techniques, and issues of collective bargaining, union contract negotiation, administration, grievance, mediation, and arbitration. **3 credits.**

405 PRINCIPLES OF INSURANCE

Studies risk, loss, and role of insurance; analysis, classification, and management of risk; insurance techniques; insurance contract and coverage analysis; types and organization of insurers; insurance marketing, underwriting, and reinsurance; rate making and reserves; insurance regulation and trends. **3 credits.**

421 BUSINESS POLICY

Prerequisite: Senior standing. Course is structured to unify and integrate the various concepts, principles, and skills learned in the individual, specialized business courses. Contemporary business issues are examined from secular and Biblical viewpoints. **3 credits.**

CE

Courses in Christian Education

106 MODERN RELIGIOUS ISSUES

Analysis of the ecumenical movement, its history, leaders (past and present), theology, current activities, goals, and the present and projected effect on fundamentalism. **2 credits.**

111 SURVEY OF CHRISTIAN EDUCATION

Organization and administration of the total education program of the local church. Such agencies as the Sunday School, week-day education, Junior Church, Vacation Bible School, youth ministries and adult education are compared and studied. **3 credits.**

301 PRACTICAL CHRISTIAN ETHICS

A survey of ethical systems with a view toward establishing a practical Christian ethic. **2 credits.**

391, 392 PRACTICAL MINISTERIAL TRAINING I, II

A practical training course for men called to full-time service. Special emphasis is given to the areas of pastoral duties, church administration, Christian education, music, youth, homiletics, and counseling. Required of male Bible and Biblical Literature majors during the Junior year. **1 credit each.**

CS Courses in Computer Science

Practice labs for which a \$25 materials fee is charged are required for each computer (CS) course.

101 COMPUTER PROGRAMMING I

An introductory course covering general computer history and terminology and beginning computer programming using the BASIC language. **3 credits.**

102 INTRODUCTION TO DATA PROCESSING

Prerequisite: CS 101. A study of computer equipment and the principles of data processing in various applications with a focus on the business world. **3 credits.**

201 COMPUTER PROGRAMMING II

Prerequisites: CS 101, MS 201, MS 202. Continuation of CS 101 with a more involved study of the BASIC language and applications, including sub-routines, arrays, file access, character manipulation, and sorting methods. **3 credits.**

210 PASCAL

Prerequisites: CS 101, MS 201, MS 202. Structured programming using the Pascal language; data types, recursive programming functions, and procedures. **3 credits.**

310 FORTRAN

Prerequisites: CS 201; MS 212 or MS 312. The solution of mathematically or scientifically oriented problems using the FORTRAN language. **3 credits.**

320 COBOL

Prerequisites: CS 102, CS 201. Business oriented programming using the COBOL language. **3 credits.**

401 ASSEMBLY LANGUAGE

Prerequisite: CS 201. Machine organization, programming in assembly language, subroutines, pseudo-operations, input-output. **3 credits.**

411 DATA STRUCTURES AND ALGORITHMS

Prerequisites: CS 201; MS 212 or MS 312. Principles of algorithm design with associate data structures; emphasis on program efficiency and clarity. **3 credits.**

ECO Courses in Economics

201 PRINCIPLES OF ECONOMICS I

The fundamental economic concepts of scarcity, alternative courses of action, and problems of choice. How the economy decides what to produce, how to produce, and how to reward participants. **3 credits.**

202 PRINCIPLES OF ECONOMICS II

Prerequisite: ECO 201. An introduction to the modern theory of income determination with emphasis on the application of monetary fiscal policy oriented toward full employment, economic growth, and balance of payment stability. **3 credits.**

203 ECONOMIC CONCEPTS

Not open to Business Administration majors. Designed for teachers, Christian workers, and other interested students who desire an understanding of current economic problems. Covers basic economic concepts and institutions of private enterprise: Federal Reserve System, government and consumer spending, inflation, unemployment, interest rates, Consumer Price Index, Gross National Product, balance of trade, and other selected topics. **3 credits.**

ED Courses in Education

101 INTRODUCTION TO EDUCATION

A beginning level survey required of all education majors. Explores the history and principles of Western and American education. Surveys the program and function of all levels of education from preschool through higher education with a special emphasis on the Christian school. **2 credits.**

201 PHILOSOPHY OF EDUCATION

A study of various philosophies of education and their relation to the Christian world-view and Christian philosophy of education. Applications of the Christian philosophy to learning and teaching methodology in the classroom. **2 credits.**

202 CURRICULUM & INSTRUCTION FOR ELEMENTARY SCHOOLS

Principles of developing a sound elementary curriculum and an analysis of the content and construction of the curriculums available to elementary schools. Practice in classroom methods and procedures including methods of discipline and the development of lesson plans and tests. **3 credits.**

- 203 TEACHER AIDE OBSERVATION**
The student spends 30 hours working under the supervision of a classroom teacher in a school setting. Required of all education majors, except Music Education and Physical Education; taken during the sophomore year. **2 credits.**
- 204 MATERIALS & METHODS OF EDUCATION**
Introduction to the various materials and methods to aid the elementary teacher. General teaching methods, principles of discipline, and classroom management are addressed. Students become familiar with the use of audio-visual equipment. **3 credits.**
- 303 CURRICULUM & INSTRUCTION FOR SECONDARY SCHOOLS**
Principles of developing a sound secondary curriculum, and an analysis of the content and construction of the curriculums available to secondary schools. Practice in classroom methods and procedures including methods of discipline and development of lesson plans and tests. **3 credits.**
- 310 CHILDREN'S LITERATURE**
Evaluation and review of children's literature. Critical analysis of format and illustrations in light of purpose and philosophy of the author. Teaching techniques and uses of literature in the elementary classroom. **3 credits.**
- 311 HEALTH EDUCATION**
Prerequisite: SCI 101. Designed for Elementary and Physical Education majors. Studies personal health practices, community services, and safety habits as they relate to the home, school, and community. Students develop a curriculum for elementary or physical education health studies. **3 credits.**
- 312 TEACHING READING IN THE SCHOOL**
Examination of methods and materials in the most widely used reading curriculums with a critical analysis of their strengths and weaknesses. Application of the techniques of teaching reading in the elementary classroom. **3 credits.**
- 313 METHODS OF TEACHING ELEMENTARY MUSIC**
Prerequisite: ED 202 or ED 303. An overview of special methods for teaching music in the elementary school, with emphasis on techniques and laboratory experience. Includes music, literature, and teaching aids for children regarding singing, rhythmic, creative, instrumental, and listening experiences, and their presentation. **3 credits.**
- 314 METHODS OF TEACHING ELEMENTARY LANGUAGE ARTS**
Prerequisites: ED 202, ED 203, ED 204. Materials, methods, and techniques of instruction in elementary language arts. **2 credits.**
- 315 METHODS OF TEACHING ELEMENTARY SOCIAL STUDIES**
Prerequisites: ED 202, ED 203, ED 204. Materials, methods, and techniques of instruction in elementary studies. **2 credits.**

- 316 METHODS OF TEACHING ELEMENTARY MATHEMATICS**
Prerequisites: ED 202, ED 203, ED 204. Materials, methods, and techniques of instruction in elementary mathematics. **2 credits.**
- 317 METHODS OF TEACHING ELEMENTARY PHYSICAL EDUCATION**
Prerequisite: ED 202, or ED 303. Materials, methods, and techniques of instruction in elementary physical education. **2 credits.**
- 318 METHODS OF TEACHING ELEMENTARY SCIENCE**
Prerequisites: ED 202, ED 203, ED 204. Materials, methods, and techniques of instruction in elementary science. **2 credits.**
- 319 METHODS OF TEACHING ELEMENTARY BIBLE**
Prerequisites: ED 202, ED 203, ED 204. Materials, methods, and techniques of instruction in elementary Bible. **2 credits.**
- 320 METHODS OF TEACHING ELEMENTARY ART**
Prerequisites: ED 202, ED 203, ED 204. Materials, methods and techniques of instruction in elementary art. **2 credits.**
- 321 METHODS OF TEACHING SECONDARY ENGLISH**
Prerequisite: ED 303. Procedures, materials, and organization for teaching secondary level English courses are investigated and demonstrated by the student. A research paper on some aspect of teaching grammar, composition, or literature completes the course. A secondary level tutoring project may be assigned at the discretion of the professor. **3 credits.**
- 322 METHODS OF TEACHING SECONDARY MUSIC**
Prerequisite: ED 202 or ED 303. Special methods in teaching music on the secondary school level. Junior and senior high school general music class curriculum, as well as organization of band, string, and vocal programs of instruction are emphasized. **3 credits.**
- 323 METHODS OF TEACHING SECONDARY SOCIAL STUDIES**
Prerequisite: ED 303. Materials, methods, and techniques of instruction for social studies courses on secondary school level. **3 credits.**
- 324 METHODS OF TEACHING SECONDARY PHYSICAL EDUCATION**
Prerequisite: ED 202 or ED 303. Materials, methods, and techniques of instruction for physical education courses on the secondary school level. **2 credits.**
- 327 METHODS OF TEACHING SECONDARY BUSINESS**
Prerequisite: ED 303. Materials, methods, and techniques of instruction for business courses on the secondary school level. **3 credits.**
- 328 METHODS OF TEACHING SECONDARY MATHEMATICS**
Prerequisite: ED 303. Materials, methods and techniques of instruction for mathematics courses on the secondary school level. **3 credits.**

- 329 METHODS OF TEACHING SECONDARY BIBLE**
Prerequisite: ED 303. Materials, methods and techniques of instruction for Bible courses on the secondary school level. **3 credits.**
- 402 ADMINISTRATION & SUPERVISION FOR TEACHERS**
 A course for the Education major in which the roles of administrators and teachers, their mutual responsibilities, and effective liaison are presented. Relationships with local, state, and other educational agencies are examined. **2 credits.**
- 404 TESTS & MEASUREMENTS**
 A study of available standardized psychological and educational tests and measurements and the interpretation of test results. Attention is given to the construction of classroom tests and quizzes. **2 credits.**
- 450 STUDENT TEACHING**
Prerequisites: Senior standing, Division approval. Eight weeks of observation and direct teaching experience in a local school. The student is under the supervision of the education faculty of the College as well as the administrator and directing teacher within the participating school. The value of working under the supervision of a master teacher in a self-contained or departmentalized classroom is of utmost importance in putting theory into practice. **8 credits.**
- 491 EDUCATION SEMINAR**
 Informal discussion and presentation of information of current interest to those in the teaching profession. **1 credit.**
- For courses in PHYSICAL EDUCATION, see PE.**
- For courses in PRESCHOOL EDUCATION, see PED.**
- For courses in SPECIAL EDUCATION, see SED.**

EN *Courses in English*

- 001 BASIC ENGLISH**
 Principles of grammar and the mechanics of writing. Required for the student who fails to achieve a sufficiently high score on the ACT, the SAT, or in high school English. **3 hours, no credit.**
- 101 ENGLISH COMPOSITION I**
 Study of the basic principles of English grammar and rhetoric. Fundamentals of written exposition are applied in the composition of short papers. **3 credits.**
- 102 ENGLISH COMPOSITION II**
Prerequisite: EN 101. Research techniques leading to the preparation of a term paper are investigated and applied. Creative and critical writing skills are practiced and evaluated. **3 credits.**

- 160 EFFECTIVE READING**
 An aid to the student in developing and maintaining reading skills and speed, with emphasis on comprehension. Diagnostic tests and reading machines are used to facilitate learning. **1 credit.**
- 170 EFFECTIVE COMPOSITION**
 Constructed to remedy deficiencies in English skills revealed through scores from the Sophomore English Examination. **3 credits.**
- 201 ADVANCED COMPOSITION**
 Specialized seminar for practice in literary exposition. Detailed study of research techniques and methods of scholarly literary presentation. **3 credits.**
- 206, 207 INTRODUCTION TO JOURNALISM**
Prerequisite: EN 102. Understanding, reporting, and writing copy for yearbook and campus publications. Practice in making lay-outs. Limited experience in photography, graphic arts, and the business aspects of producing a yearbook. **3 credits.**
- 210, 211 JOURNALISM LABORATORY**
 Completion of yearbook for last deadline. Final compilation: collation, proofreading, and marketing. **1 credit.**
- 304 CREATIVE WRITING**
 A critical study of literary forms for creative writing. Emphasis on writing various types of original compositions. **3 credits.**
- 321 ADVANCED GRAMMAR**
 A detailed study of English grammar and composition for the upper level student who plans to teach English or who seeks a higher proficiency in English skills than that attained in freshman English composition. **3 credits.**

GS *Courses in General Studies*

- 101 FRESHMAN ORIENTATION**
 Assists students in establishing a good foundation for college life. Areas included are: campus adjustment, spiritual growth, social skills, motivation, memorization, note taking, scheduling, reading speed and comprehension, and specific study skills. Required for all freshmen; encouraged for new and returning students on academic probation. **1 credit.**
- 401 SENIOR SEMINAR**
Prerequisite: Senior standing. Preparation for the Graduate Record Exam, career seminars, résumé writing, job interview techniques, money management, and other practical aid for new professionals about to enter the job market. **1 credit.**

GY**Courses in Geography****201, 202 WORLD GEOGRAPHY I & II**

A survey of the principles of geography, including maps, climates, economic use of resources, land formation, conservation pollution, and overall effect of the culture of the people on the land. **3 credits each.**

HY**Courses in History****201, 202 UNITED STATES HISTORY I & II**

History of the United States from the earliest explorations to the era of the Great Society. Special attention is paid to the political, economic, cultural, and religious growth of the United States. **3 credits each.**

221, 222 HISTORY OF WESTERN CIVILIZATION I & II

A survey of western civilization from the beginning of writing to the present time. Special emphasis is given to the political, social, cultural, and religious developments in the history of mankind. **3 credits each.**

301, 302 ANCIENT HISTORY I & II

The origins and histories of the ancient Near East. First semester: the ancient Semitic world of Mesopotamia, Egypt, Syria, Israel, and Persia. Second semester: the Minoan, Hellenic, and Hellenistic periods, and the rise and fall of the Roman Empire. **3 credits each.**

304 RECENT AMERICAN HISTORY

The political, social, economic, and cultural development of the United States during the twentieth century. Focuses on the Progressive Movement, World War I, the Twenties, the Depression, the New Deal, World War II, and the Cold War. **3 credits.**

311 BRITISH HISTORY

History of England from the time of the Roman occupation until the present time. Special attention is given to the development of the British government, the rise of the British Empire, and the role of Great Britain in the modern world. **3 credits.**

318 RECENT EUROPEAN HISTORY

Political and cultural development in twentieth century Europe. Special emphasis is given to World War I, the rise of Communism, Fascism, and Nazism; the inter-war period; World War II; and the various plans for European cooperation. **3 credits.**

325 CIVIL WAR & RECONSTRUCTION

Prerequisite: HY 201, HY 202, or permission of the instructor. An in-depth study of the factors of sectionalism and states' rights which led to the Civil War. Heavy emphasis is placed on military campaigns and the post-war Reconstruction. **3 credits.**

392 HISTORY OF COMMUNISM

(See: POS 305). **3 credits.**

401, 402 CHURCH HISTORY I & II

First semester: the Christian church from its beginning to the Reformation. Second semester: the Reformation and Counter-Reformation, the reformer, the persecution, and developments of post-Reformation denominations and their effects on governments and culture. **3 credits each.**

491 HISTORY SEMINAR

Selected problems in history and an examination of historiography and philosophies of history. **3 credits.**

LA**Courses in Languages****101, 102 ELEMENTARY GREEK I & II**

Prerequisite: EN 102. A foundational study of the grammar, vocabulary and syntax of New Testament Greek with the goal of preparing the student to translate in the Greek New Testament. **3 credits each.**

103, 104 ELEMENTARY HEBREW I & II

Prerequisite: EN 102. An introduction to the Hebrew of the Old Testament stressing the mastery of basic forms, vocabulary, grammar, and pronunciation. Some emphasis is given to the translation of simple passages in the Old Testament. Use of lexicons and other language learning aids will be introduced. The course is designed to help pre-seminary students as well as others. **3 credits each.**

105, 106 ELEMENTARY SPANISH I & II

Prerequisite for LA 106: LA 105 or satisfactory score on language placement test. Basic fundamentals of the Spanish language and culture are considered through tapes, conversation, and written work. **3 credits each.**

107, 108 ELEMENTARY GERMAN I & II

Prerequisite for LA 108: LA 107 or satisfactory score on language placement test. Basic fundamentals of the German language and culture are considered through tapes, conversation, and written work. **3 credits each.**

201, 202 INTERMEDIATE GREEK I & II

Prerequisite: LA 102. A study of advanced grammar, vocabulary based on word frequency lists, and methodology for word studies with the goal of preparing the student to write simple exegetical commentary. Translation of varied portions of the Greek New Testament. **3 credits each.**

205, 206 INTERMEDIATE SPANISH I & II

Prerequisite: LA 106 or satisfactory score on language placement test. Review of the correct usage of the language, with an oral emphasis. Culture and some literature are studied. **3 credits each.**

- 207, 208 INTERMEDIATE GERMAN I & II**
Prerequisite: LA 108 or satisfactory score on language placement test. Review of the correct usage of the German language, with an oral emphasis. Culture and some literature are studied. **3 credits each.**
- 301, 302 GREEK TEXT STUDIES I & II**
Prerequisite: LA 202. Translation and exegetical study of the Greek text of various New Testament books. Selection is made by the instructor after consultation with the students involved. **3 credits each.**

LIT *Courses in Literature*

- 211, 212 AMERICAN LITERATURE I & II**
 An intensive study of several major works of American literature which are representative of their periods and genres. Each course should enable the student to develop his ability to read discerningly and to understand the cultural basis for the literature. **3 credits each.**
- 221, 222 ENGLISH LITERATURE I & II**
 An intensive study of works representative of periods and development in English literature. Each course should aid the student in understanding cultural development and progression and in forming his own ideas and judgments in relation to these major works. Emphasis is placed on the influence of the Bible upon English literature. **3 credits each.**
- 324 ENGLISH LITERATURE OF THE EIGHTEENTH CENTURY**
 A study of the representative literature of the neo-classical and pre-Romantic era including such writers as Defoe, Swift, Pope, Gray, Johnson, Goldsmith, Burns, and Blake. Special emphasis is given to the early development and rise of the novel as a major literary form. **3 credits.**
- 332 SHAKESPEARE**
 An in-depth study of Shakespeare's works, with greatest emphasis on the tragedies. **3 credits.**
- 334 MILTON**
 A study of Milton's poetical works (mainly *Paradise Lost*), selected prose, and the author's philosophy in relation to his historical setting. **3 credits.**
- 431 CHAUCER**
 A study of Chaucer's major works and other major works of the medieval period of English literature. Much is read in Middle English in order to familiarize the student with an important stage in the development of the English language. **3 credits.**
- 441 CONTEMPORARY LITERATURE**
 A study of selected short stories from the modern and contemporary periods, including such authors as Henry James, James Joyce, Dostoevsky, and Tolstoy, with an individually assigned novel from the same periods. Special emphasis given to evaluation and development of literary discernment. **3 credits.**

- 490 LITERARY CRITICISM**
 Advanced seminar course for evaluating the literary qualities of traditional and modern works. Analysis of the contributing effects of style, form, and philosophy to total literary value. **3 credits.**
- 491 LITERATURE SEMINAR**
 Interaction of faculty with advanced students in an area of literary study. **1, 2, or 3 credits.**

MS *Courses in Mathematics*

- 001 INTRODUCTION TO MATHEMATICS**
 Preparatory course for MS 101. Required for the student who fails to achieve a sufficiently high score on the ACT, the SAT, or in high school mathematics. **3 hours, no credit.**
- 101 COLLEGE MATHEMATICS**
 A general coverage of mathematics topics, including decimal and percent problems, basic statistics and geometry applications, and introductory principles of algebra. **3 credits.**
- 201 COLLEGE ALGEBRA**
 A study of sets, properties of real numbers, algebraic expressions and polynomials, solving equations and inequalities, and various relations and functions and their graphs. **3 credits.**
- 202 COLLEGE TRIGONOMETRY**
 Circular and trigonometric functions and their graphs, radian and degree measure of angles, verifying trigonometric identities, solving triangles, and the laws of sines and cosines. **3 credits.**
- 211 CALCULUS I**
Prerequisites: MS 201, 202. A review of plane geometry and functions and their graphs. A study of limits and continuity of functions, the derivative, and applications. The integral with the fundamental theorem of calculus and Riemann sums. An introduction to some applications of the integral. **3 credits.**
- 212 CALCULUS II**
 Continuation of MS 211 with transcendental functions, further methods of differentiation and integration, and some further applications. **3 credits.**
- 311, 312 STATISTICS I & II**
Prerequisite: MS 201. A study of summarization of data, probability, probability distributions, normal distribution, sample mean and standard deviation, statistical estimation, testing, hypothesis, chi-square distributions, linear correlations, and regression. **3 credits each.**
- 401 LINEAR ALGEBRA**
Prerequisites: MS 211, 212. A study of systems of linear equations, matrices, and vector spaces and their properties. **3 credits.**

- 402 NUMERICAL ANALYSIS**
Prerequisites: MS 211, 212. A study of finite differences, computer techniques, interpolation and quadrature, and numerical solution of algebraic and transcendental equations. **3 credits.**
- 421 DIFFERENTIAL EQUATIONS**
Prerequisites: MS 211, 212. A study of first order linear and non-linear differential equations, higher order linear equations and applications. **3 credits.**

MI *Course in Missions*

- 201 INTRODUCTION TO MISSIONS & EVANGELISM**
 Studies the Biblical foundations of missions and the expansion of missionary activities from Pentecost to the present. Practical instruction in personal Christian testimony in the world and in the church including modern opportunities and problems. **3 credits.**

MU *Courses in Music*

- 101 FUNDAMENTALS OF MUSIC**
 Not open to Music or Music Education majors. Covers the rudiments of music pertaining to notation and sight-singing. Practice in song leading techniques. **1 credit.**
- 103 MUSIC APPRECIATION**
 Not open to Music or Music Education majors. A general survey of the world's great music and its composers, with emphasis upon the development of intelligent listening. Includes a study of musical notation and terminology. **3 credits.**
- 123, 124 FRESHMAN MUSIC THEORY I & II**
 Basic harmony, melodic dictation, sight-singing, ear training, and elementary keyboard harmony. Some instrumental or vocal background desirable. **3 credits each.**
- 151, 152 VOICE PERFORMANCE CLASS**
 For non-voice majors. Voice building through breathing exercises and vocalizing, performance laboratory experience, study of vocal forms, and practice in song leading techniques. Taken in conjunction with applied voice. **No credit or charge.**
- 159-166 COLLEGE CHOIR**
 Open to all who love to sing serious music. Presents a major Christmas work and performs Sunday evenings during the Spring semester. Extra time commitment is expected. A maximum of four credits may be applied toward graduation requirements. **1 credit each. No credit or charge to Music and Music Education majors.**

- 167-174 CHAPEL SINGERS**
 A mixed ensemble chosen by audition. Represents the College through performances in high school assemblies, local churches, and civic organizations. May be taken for credit or non-credit. A maximum of four credits may be applied toward graduation requirements. **1 credit each.**
- 213, 214 MUSIC HISTORY I & II**
 A survey of the historical development of musical styles and the literature representative of those styles. **2 credits each.**
- 223, 224 SOPHOMORE MUSIC THEORY I & II**
 Advanced harmony, melodic and rhythmic dictation, ear training, keyboard harmony, and sight-singing of more advanced chromatics and melodies with some rhythmic difficulty. **3 credits each.**
- 241 BRASS TECHNIQUES**
 Required of Music and Music Education majors. Basic class instruction in brass instruments. **1 credit.**
- 242 PERCUSSION TECHNIQUES**
 Required of Music and Music Education majors. Basic class instruction in percussion instruments. **1 credit.**
- 243 STRING TECHNIQUES**
 Required of Music and Music Education majors. Basic class instruction in string instruments. **1 credit.**
- 244 WOODWIND TECHNIQUES**
 Required of Music and Music Education majors. Basic class instruction in woodwind instruments. **1 credit.**
- 287, 288 BRASS ENSEMBLE**
Prerequisite: Instructor's permission. Group practice and performance of selected sacred music in chapel and in local churches. **1 credit each.**
- 323 FORM & ANALYSIS (Junior Theory)**
Prerequisite: MU 224. A study of the development of form in music beginning with 16th century counterpoint and concluding with sonata-allegro form. Most of the classwork consists of music analysis by the student. **2 credits.**
- 324 SURVEY OF ORCHESTRATION & ARRANGING**
Prerequisite: MU 224. A survey of the principles of orchestration and choral arranging. **2 credits.**
- 352 CONDUCTING**
Prerequisites: MU 124 and two semesters of College Choir. Emphasis upon clarity in the manipulation of fundamental patterns and individual instruction in expressive baton techniques. Workshop experience with critique from instructor. Parallel reading that leads to knowledge of various schools or procedures in conducting. **2 credits.**
- 354 SACRED MUSIC MATERIALS**
 The repertoire of the minister of music in the total church program. Examines longer and shorter forms of sacred choral works. **2 credits.**

- 356 CHURCH MUSIC ADMINISTRATION**
Philosophies of music in worship based on the Scriptures and Christian heritage; organizing and administering a church music program; the responsibilities of the minister of music. **2 credits.**
- 423 COUNTERPOINT (Senior Theory)**
Prerequisite: MU 224. The study of compositions for examples and principles of counterpoint with particular emphasis on contrapuntal techniques represented in Bach's works. Emphasizes fundamental principles of tonal functions, voice leading, harmonic formulae, and compositional devices to create original examples of two- and three-part counterpoint and canon. **3 credits.**
- 490 KEYBOARD HARMONY**
Keyboard harmonization of melodies and basses, sequences, cadences, modulations, transcriptions, and improvisations. **1 credit.**
- 491 MUSIC SEMINAR**
Interaction of faculty with advanced students in an area of musical study. **1, 2, or 3 credits.**

MU *Courses in Applied Music*

- 181, 182, 281, 282 APPLIED MUSIC**
For the non-Music Major or the Music major studying a secondary instrument. Instruction on 100 or 200 level in voice, piano, organ, or brass. Proficiency examination required of Music majors. **1 credit each.**
- 191, 192 APPLIED VOICE**
Correct breathing and tone production, simple vocalizations, principles of phonetics as applied to singing simple songs in Italian and English. Student is automatically enrolled in voice performance class, one hour weekly. Proficiency examination required at end of semester. **2 credits each.**
- 193, 194 APPLIED PIANO**
Beginning piano techniques, study and performance of the Masters in composition. Proficiency examination required at end of semester. **2 credits each.**
- 195, 196 APPLIED ORGAN**
Prerequisite: Piano or organ background at the level of Bach inventions or Beethoven sonatas. Technique in organ playing, studies for manuals and pedals, keyboard studies from pre-Baroque and Baroque periods, preparatory studies for hymn playing and hymns. Proficiency examination required at end of semester. **2 credits each.**
- 197, 198 APPLIED BRASS**
Private instruction on trumpet or cornet. A progressive study of technique. Representative solo literature from all style periods. Proficiency examination required at end of semester. **2 credits each.**

- 291, 292 APPLIED VOICE**
Prerequisite: Necessary competency at MU 192 level. Vocal technique, including breath control, resonance, and diction as applied to singing arias from oratorios, cantatas in English, and German art songs. Student is automatically enrolled in voice performance class, one hour weekly. Proficiency examination required at end of semester. **2 credits each.**
- 293, 294 APPLIED PIANO**
Prerequisite: Necessary competency at MU 194 level. A continuation and intensification of the work described in MU 193 and 194. Includes an analysis of elementary through lower-intermediate piano literature. Proficiency examination required at end of semester. **2 credits each.**
- 295, 296 APPLIED ORGAN**
Prerequisite: Necessary competency at MU 196 level. Manual and pedal techniques of organ playing. Keyboard studies from Bach: selected preludes and fugues, miscellaneous preludes and fantasies. Other compositions from the Baroque, classical, romantic, impressionistic, and contemporary repertoire. Proficiency examination required at end of semester. **2 credits each.**
- 297, 298 APPLIED BRASS**
Prerequisite: Necessary competency at MU 198 level. A progressive study of trumpet or cornet technique. Representative solo literature from all style periods. Proficiency examination required at end of semester. **2 credits each.**
- 391, 392 APPLIED VOICE**
Prerequisite: Necessary competency at MU 292 level. Preparation and presentation of senior recital representing all styles and languages studied. Vocal technique, including breath control, resonance, and diction as applied to singing arias from cantatas, oratorios, opera, and French art songs. Student is automatically enrolled in voice performance class, one hour weekly. Proficiency examination required at end of semester. Joint recital recommended. **2 credits each.**
- 393, 394 APPLIED PIANO**
Prerequisite: Necessary competency at MU 294 level. Classic piano works together with preparation of the senior recital material. Joint recital recommended. **2 credits each.**
- 395, 396 APPLIED ORGAN**
Prerequisite: Necessary competency at MU 296 level. Manual and pedal techniques of organ playing. Includes Bach preludes and fugues, Brahms choral preludes, Mendelssohn sonatas, and selected contemporary compositions. Joint recital recommended. **2 credits each.**
- 397, 398 APPLIED BRASS**
Prerequisite: Necessary competency at MU 298 level. A progressive study of trumpet or cornet technique. Representative solo literature from all style periods. Joint recital recommended. **2 credits each.**

- 491, 492 APPLIED VOICE**
Prerequisite: Necessary competency at MU 392 level. Preparation and presentation of senior recital representing all styles and languages studied. Vocal technique including breath control, resonance, and diction as applied to singing arias from opera, oratorios, and contemporary American and British art songs. Student is automatically enrolled in voice performance class, one hour weekly. **2 credits each.**
- 493, 494 APPLIED PIANO**
Prerequisite: Necessary competency at MU 394 level. Preparation and presentation of senior recital program, consisting of such representative compositions as Bach: Prelude and Fugue from the Well-Tempered Clavichord; Beethoven: Sonata Op. 81A; Schumann: Fantasy Pieces; Chopin: Nocturnes or Polonaises; and Debussy: Images. Advanced accompanying required. **2 credits each.**
- 495, 496 APPLIED ORGAN**
Prerequisite: Necessary competency at MU 396 level. Manual and pedal techniques of organ playing. Preparation and presentation of senior recital consisting of advanced repertoire from Bach: toccatas, preludes and fugues; Franck: chorales; and selections from contemporary organ literature. **2 or 4 credits each.**
- 497, 498 APPLIED BRASS**
Prerequisite: Necessary competency at MU 398 level. Progressive study of trumpet or cornet techniques. Preparation and presentation of senior recital representing solo literature from all style periods. **2 credits each.**

PHI

Courses in Philosophy

- 201 INTRODUCTION TO PHILOSOPHY**
 A study of the issues of philosophy centered in such classical problems as truth, knowledge, origins, values, and religious experience. Includes a survey of the leading systems of philosophy. All systems are compared and contrasted with the Christian world view based on divine revelation. **3 credits.**
- 302 CONTEMPORARY PHILOSOPHY**
 An apologetic survey of contemporary philosophy from Kant to the present with special emphasis on those systems leading to Existentialism in its modern form and influence. **3 credits.**

PE

Courses in Physical Education

- 101-108 PHYSICAL EDUCATION ACTIVITY**
 Two semesters required of each student unless specifically excused by the Registrar. May be selected as a general elective after general education requirements are met. A maximum of three credits may be applied toward graduation requirements. **1 credit each.**
- | | |
|---|---------------------------------|
| 101W Creative Conditioning & Fitness I | 102M Soccer, Golf, Tennis |
| 103W Creative Conditioning & Fitness II | 104M Basketball, Softball |
| 105W Basketball, Volleyball, Bowling | 106M Weightlifting & Fitness I |
| 107W Tennis, Softball, Badminton | 108M Weightlifting & Fitness II |
- (W = Women, M = Men)
- 121 FIRST AID**
 Procedures for immediate and temporary care of sick and injured. Red Cross certification is given. **2 credits.**
- 151 PRINCIPLES OF PHYSICAL EDUCATION**
 Introduction to physical education as a profession including an overview of the fields of study within physical education. **2 credits.**
- 201-204 SKILLS LABORATORY**
 Designed for the Physical Education major for the purpose of developing personal skills in selected activities. Analysis of each skill enables the student to understand the mechanics of each sport and to develop proper teaching cues. Physical Education majors must take six hours in this series. **2 credits each.**
- | | |
|-----------------------|---------------------------------|
| 201 Basketball & Golf | 202 Tennis, Baseball & Softball |
| 203 Minor Sports | 204 Soccer, Track & Field |
- 211 THEORY AND PRACTICE IN COACHING VOLLEYBALL & SOFTBALL**
 Discussions of positions, defense, offense, and team play. Emphasis on developing Christian character in student athletes. **2 credits.**
- 212 THEORY AND PRACTICE IN COACHING SOCCER**
 Discussions of positions, defense, offense, and team play. Emphasis on developing Christian character in student athletes. **2 credits.**
- 213 THEORY AND PRACTICE IN COACHING BASKETBALL**
 Discussions of strategy, offense, defense, individual and team play, and scouting. Emphasis on developing Christian character in student athletes. **2 credits.**
- 214 THEORY AND PRACTICE IN COACHING BASEBALL**
 Discussions of positions, strategy, and scoring. Emphasis on developing Christian character in student athletes. **2 credits.**
- 215 THEORY AND PRACTICE IN COACHING TRACK & FIELD**
 Analysis and study of individual track and field events. Emphasis on developing Christian character in student athletes. **2 credits.**

321 SCHOOL AND COMMUNITY RECREATION

A study of recreational programs in the school and community and the problems confronting leaders and directors. **3 credits.**

361 METHODS OF TEACHING ADAPTIVE PHYSICAL EDUCATION

An overview of various handicapping conditions with emphasis on the mentally retarded. Methods of evaluation and teaching special students. **2 credits.**

370- COLLEGE VARSITY SPORTS

375 Participation in a varsity sport satisfies either a one-hour physical education activity or a one-hour general elective requirement. Additional participation is on a non-credit basis. **1 credit each.**

370 Cheerleading

371 Soccer

372 Volleyball

373 Basketball

374 Baseball

375 Softball

378 KINESIOLOGY

Prerequisites: SCI 101, SCI 204, SCI 205. Examines body coordination as it relates to origins, insertions, and innervation of muscles. **3 credits.**

381 ATHLETIC TRAINING

Prerequisites: PE 121, SCI 204, SCI 205. Studies principles and procedures for training athletes. Emphasizes prevention and care of athletic injuries. **2 credits.**

472 ORGANIZATION AND ADMINISTRATION OF PHYSICAL EDUCATION

Prerequisite: PE 151. Studies of the organizational and administrative duties and problems related to physical education and athletic programs in the school. **3 credits.**

478 EXERCISE PHYSIOLOGY

Prerequisites: SCI 101, SCI 204, SCI 205. Studies acute and chronic adaptations of various bodily systems to exercise. **3 credits.**

491 PHYSICAL EDUCATION SEMINAR

Interaction of faculty with advanced students in an area of physical education study. **1, 2, or 3 credits.**

POS Courses in Political Science

205 AMERICAN GOVERNMENT

Surveys the development and function of American government with special attention given to its present problems. **3 credits.**

305 COMMUNISM

Studies the historical and political causes of the rise of Communism in the twentieth century, the 1917 Revolution in Russia, Chairman Mao and the Cultural Revolution in China, and United States foreign policy toward China and the Soviet Union. Examines Communist ideology, literature, and the influence of the Communist Party in the United States. **3 credits.**

PED Courses in Preschool Education

130 COGNITIVE EXPERIENCES IN THE PRESCHOOL

Emphasizes learning through experiences in math, science, social studies, and health. Student is required to carry out cognitive activities in children's centers. **2 credits.**

131 CREATIVE EXPERIENCES IN THE PRESCHOOL

Emphasizes learning through experiences in art, music, play, dramatics, story-telling, creative movement, and games. Student is required to carry out creative activities in children's centers. **2 credits.**

132 TEACHER AIDE OBSERVATION

Student works under the supervision of a teacher in a preschool setting for a total of 30 clock hours. **2 credits.**

200 STUDENT TEACHING

Prerequisites: Second year standing, Division approval. Observation and direct teaching experience in a local preschool. The student is under the supervision of the education faculty of the College as well as the administrator and directing teacher in the preschool. **4 credits.**

PSY Courses in Psychology

271 GENERAL PSYCHOLOGY

A survey of the field including psychological measurement, perception, learning, memory, motivation, emotion, and personality. Introduces professional and specialized fields of psychology. **3 credits.**

283 HUMAN GROWTH & DEVELOPMENT I

Studies the physical, spiritual, educational, and emotional development of human life from birth through adolescence. **3 credits.**

301 HUMAN GROWTH & DEVELOPMENT II

Studies the developmental processes and the socio-psychological forces affecting them from the end of adolescence through the remainder of human life. **3 credits.**

305 EXPERIMENTAL PSYCHOLOGY

An introduction to the research process including the basic nature of research, simple research designs, and statistics for the behavioral sciences. Required for graduate work in psychology. **3 credits.**

311 PSYCHOLOGICAL TESTING

An introduction to the principles of psychological testing. The function, characteristics, and use of selected tests. Administration, scoring, and interpretation of sample tests. **3 credits.**

322 PERSONALITY THEORY

Studies the development, organization, classification, methods of assessment, and dynamics of personality. **3 credits.**

325 INTRODUCTION TO CLINICAL & COUNSELING PSYCHOLOGY

The principal approaches to counseling are considered. Methods in group and individual counseling; theories and procedures used in clinical and counseling psychology. **3 credits.**

328 ABNORMAL PSYCHOLOGY

Studies the causes of personality disorganization including neurotic and psychotic behavior and their origin, classification, and symptoms. Surveys diagnosis, therapy, and prevention with attention to cultural and philosophical factors of abnormal behavior. **3 credits.**

337 MARRIAGE & THE FAMILY

Examines premarital issues, personality types, role responsibility, conflict avoidance and resolution, and the marriage contract from a Biblical viewpoint. **3 credits.**

425 SOCIAL PSYCHOLOGY

Investigates environmental factors in social behavior, moral development, positive social action, prejudice, and discrimination. The psychology of group interaction including power, leadership, and control. **3 credits.**

426 COUNSELING THROUGH THE SCRIPTURES

Studies general and specific passages of Scripture appropriate in dealing with a variety of marriage and family related problems. **3 credits.**

454 THEORIES & SYSTEMS OF PSYCHOLOGY

Examines the historical, philosophical, and scientific ideas which provide the foundation for current psychological theory and practice. **3 credits.**

475 TECHNIQUES OF CHRISTIAN COUNSELING

An objective appraisal of the approach, method, and theory presented by some of the more popular authors and counselors including Adams, Crabb, and Dobson. **3 credits.**

491 PSYCHOLOGY SEMINAR

Interaction of faculty with advanced students in an area of psychological study. **1, 2, or 3 credits.**

SCI*Courses in Science***101 GENERAL BIOLOGY**

An introductory study of biological organisms; their ecological balance and classification systems. Emphasizes the study of the human body from the creationist viewpoint. **3 credits.**

102 PHYSICAL SCIENCE

A fundamental exploration of specific fields of physical science: astronomy, geology, meteorology, and earth sciences. **3 credits.**

204 ANATOMY

Prerequisite: SCI 101. A general overview of the basic anatomical structures of the human body. **3 credits.**

205 PHYSIOLOGY

Prerequisites: SCI 101, SCI 204. A detailed analysis of the physiological and chemical reactions of the body including a study of the following systems: muscular, nervous, circulatory, respiratory, endocrine, metabolic, digestive, and reproductive. **3 credits.**

270 HEALTH

Prerequisite: SCI 101. Designed for Elementary and Physical Education majors. Studies personal health practices, community services, and safety habits as they relate to the home, school, and community. Students develop a curriculum for elementary or physical education health studies. **3 credits.**

SEC*Courses in Secretarial Science***101 SECRETARIAL PROCEDURES**

Students develop ability and skill in a variety of office responsibilities. Covers duties expected of a secretary in the normal operations of a business office including the use of modern office equipment. **3 credits.**

107 INTRODUCTORY TYPING

Students learn the touch system of electric typing and develop accuracy, rhythm, and speed. Presents form, arrangement, and style of business letters. **3 credits.**

108 INTERMEDIATE TYPING

Prerequisite: SEC 107. Experience in typing a wide variety of cards, envelopes, reports, manuscripts, forms, and general correspondence. **3 credits.**

110 BEGINNING SHORTHAND

The Gregg system of shorthand emphasizing theory and technique. **3 credits.**

111 INTERMEDIATE SHORTHAND

Prerequisite: SEC 110. Emphasis on increasing speed and accuracy and advancing the student's skill level. **3 credits each.**

207 ADVANCED TYPING

Prerequisite: SEC 108. Advanced work with letters, tables, statistical data, legal forms, bookkeeping reports, and documents with emphasis on speed and accuracy. **3 credits.**

- 208 TRANSCRIPTION**
Prerequisite: SEC 207. Emphasizes the production of mailable office documents from dictation that meet the approval of office supervisors. **3 credits.**
- 210, 211 ADVANCED SHORTHAND I & II**
Prerequisite: SEC 111. Concentrates on improving speed and accuracy, building vocabulary, spelling, punctuation, and grammar skills. Varied and increasingly complex materials give the students wider capability in the business world. **3 credits.**
- 221 WORD PROCESSING CONCEPTS**
 Studies the role of word processing in the business environment. Examines the use of equipment by which information is reproduced, communicated, distributed, stored, retrieved, and protected. **3 credits.**

SY *Course in Sociology*

- 261 GENERAL SOCIOLOGY**
 Principles of sociology as related to the basic problems and nature of human relationships. **3 credits.**

SED *Courses in Special Education*

- 200 INTRODUCTION TO EXCEPTIONAL CHILDREN**
 Examines the incidence, causes, diagnosis, agencies for referral, and the recommended teaching procedures for exceptional children in the following categories: specific learning disabilities, emotionally handicapped and socially maladjusted, hearing impaired, sight impaired, mentally retarded, physically handicapped, and the gifted. **3 credits.**
- 210 LANGUAGE DEVELOPMENT & SPEECH DISABILITIES**
 Studies development of language and common speech disabilities. **3 credits.**
- 300 INTRODUCTION TO MENTAL RETARDATION**
 Examines the biological, psychological, and sociological foundations of mental retardation. **3 credits.**
- 320 CURRICULUM & METHODS FOR THE TRAINABLE MENTALLY RETARDED**
 The development of church and school programs, curriculums, and methods for the trainable mentally retarded child and adult. **3 credits.**
- 321 CURRICULUM & METHODS FOR THE EDUCABLE MENTALLY RETARDED**
 The development of church and school programs, curriculum, and methods for the educable mentally retarded child and adult. **3 credits.**

- 330 THEORIES OF LEARNING DISABILITIES**
 Studies the causes and characteristics of learning disabilities. **3 credits.**
- 340 DIAGNOSIS OF THE LEARNING DISABLED**
 The utilization of formal and informal testing instruments in the location and remediation of learning disabilities. **3 credits.**
- 341 INDIVIDUALIZED INSTRUCTION & CLASSROOM MANAGEMENT FOR THE LEARNING DISABLED**
 The development of individualized programs for the learning disabled based upon the results of diagnostic tests. **3 credits.**
- 350 STUDENT PRACTICUM IN SPECIAL EDUCATION**
 Opportunity for supervised experience with exceptional children in a classroom setting. **1, 2, or 3 credits.**
- 360 INTRODUCTION TO THE GIFTED**
 Studies the nature and needs of the gifted. **3 credits.**
- 450 STUDENT TEACHING: EXCEPTIONAL CHILDREN**
Prerequisites: Senior standing, Divisional approval. Six weeks of observation and direct teaching experience with exceptional children in a local school. The student is under the supervision of the education faculty of the College as well as the administrator and directing teacher within the participating school. **6 credits.**
- 491 SPECIAL EDUCATION SEMINAR**
 Advanced study of a specific subject in the student's area of specialization. **1, 2, or 3 credits.**

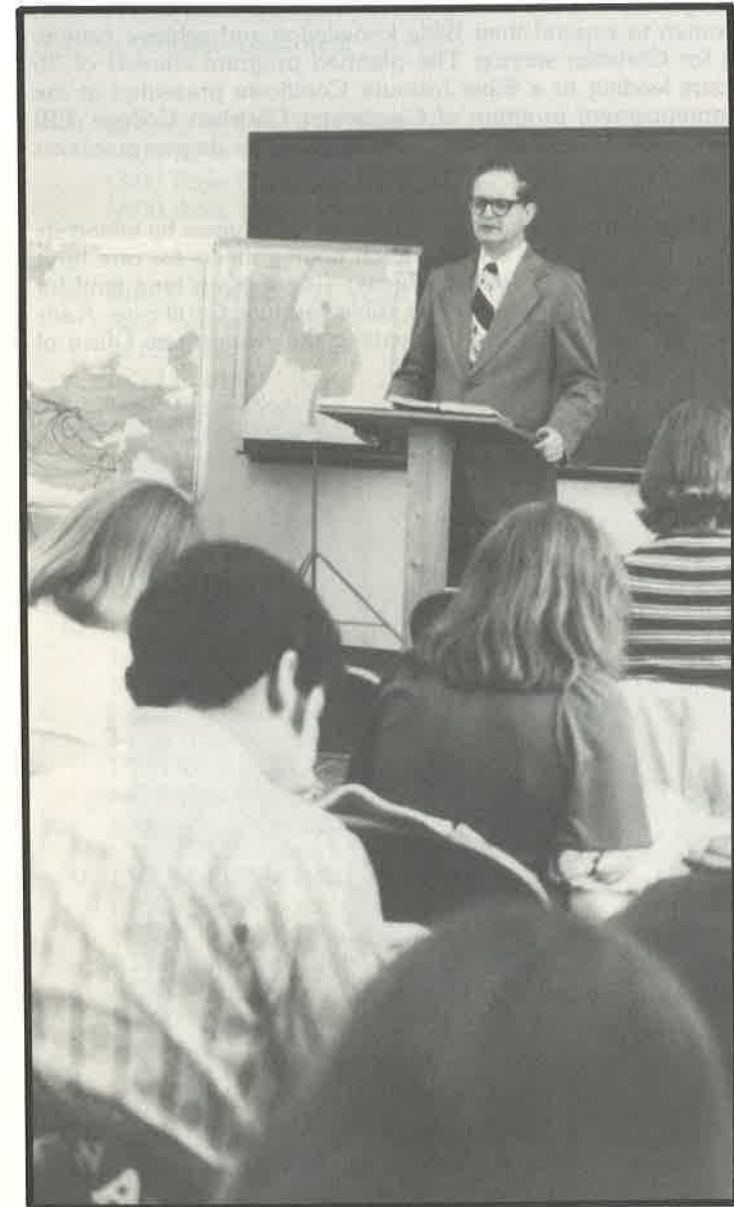
SP *Courses in Speech*

- 162 FUNDAMENTALS OF SPEECH**
 Basic principles of speech writing and delivery, including voice production, body expression, and audience control. Preparation and presentation of various types of speeches. **3 credits.**
- 301 ORAL INTERPRETATION**
Prerequisite: SP 162. Oral presentation of various types of literature including monologue, dialogue, and drama, with emphasis on effective oral reading of the Bible. **3 credits.**
- 496-498 PERFORMANCE ACTIVITY**
 Preparation and presentation of oral literature in a public production such as a Reader's Theater or a drama. Members of technical crews (e.g. lighting, make-up, sound, and props) are also eligible for credit. A maximum of three credits may be applied toward graduation requirements. **1 or 2 credits each.**



"Understanding is a wellspring of life
unto him that hath it. . ."

Proverbs 16:22



Evening Bible Institute

EVENING BIBLE INSTITUTE

Norman P. Spotts, Academic Director
Frank L. Snyder, Administrative Director

The Evening Bible Institute (EBI) provides an opportunity for Christian men and women to expand their Bible knowledge and achieve systematic training for Christian service. The planned program consists of 36 semester hours leading to a Bible Institute Certificate presented at the annual Commencement program of Clearwater Christian College. EBI courses do not apply toward the Associate or Bachelor degree programs of the College.

Certificate requirements can be completed in three years by taking six semester hours two evenings a week. Each course meets for one hour each week on Monday or Tuesday evening. There is no time limit for completing the course of study for the Bible Institute Certificate. Additional information can be obtained by writing the Admissions Office of the College.



EBI CERTIFICATE PROGRAM

COURSES

Semester Hours

I. BIBLE SURVEY

- I-100 Old Testament Survey I
- I-200 Old Testament Survey II
- I-300 New Testament Survey

2
2
2

6

II. BASIC BIBLE DOCTRINES

- I-400 Bible Doctrines I
- I-500 Bible Doctrines II
- I-600 Bible Doctrines III

2
2
2

6

III. BIBLE BOOK STUDIES

- New Testament
- I-110 John
- I-210 Romans
- I-610 Revelation

1
1
1

- Old Testament
- I-310 Exodus
- I-410 Isaiah
- I-510 Daniel

1
1
1

6

IV. BIBLICAL THEMES

- I-120 Greek Word Studies
- I-220 Biblical Customs and Practices
- I-320 Methods of Bible Study
- I-420 How We Got Our Bible
- I-520 Why Believe the Bible
- I-620 Vital Issues of the Hour

1
1
1
1
1
1

6

V. EVANGELISM AND CHRISTIAN SERVICE

- I-130 Speaking and Teaching Skills
- I-230 Christian Counseling
- I-330 Survey of Christian Education
- I-430 Techniques in Teaching the Bible
- I-530 Personal Evangelism
- I-630 Contemporary Religions and Cults

1
1
1
1
1
1

6

VI. CHRISTIAN LIVING	
I-140 Christian Living-Adults	1
I-240 Christian Living-Children and Youth	1
I-340 Christian Living-Family	1
	<hr/> 3
VII. CHRISTIAN HISTORY AND GEOGRAPHY	
I-440 Survey of Church History	1
I-540 Biblical Archaeology	1
I-640 Biblical Geography	1
	<hr/> 3
Total Hours:	36



"For the ways of man are before the eyes of the Lord, and He pondereth all his goings."

Proverbs 5:21



Personnel

BOARD OF DIRECTORS

	<i>Name</i>	<i>Profession</i>	<i>Home</i>
Chairman:	Orville Roark	CPA for State of Florida	St. Petersburg, FL
President:	Arthur Steele	CCC President	Clearwater, FL
Secretary:	Dale Crowley	Christian Radio Broadcaster	Largo, FL
Treasurer:	Frank Sheriff	Retired Businessman	Largo, FL
	Samuel Brooks	Pastor	Port Charlotte, FL
	Alan Cockrell	Pastor	Temple Terrace, FL
	John Graham	Businessman	Orlando, FL
	David Norris	Dairy Farmer	Ellenton, FL
	Norman Pyle	Pastor	Riverdale, GA
	Donald Vanostenberg	Retired Businessman	St. Petersburg, FL
	Ralph Wilkins	Retired Businessman	St. Petersburg, FL
Advisors:	James Bauman	CCC Administrator	Clearwater, FL
	John Kruhmin	CCC Administrator	Clearwater, FL

ADMINISTRATION AND STAFF

President.....	Dr. Arthur Steele
Assistant to President.....	Dr. James Bauman
Dean of Students.....	Mr. Del Wubbena
Academic Dean.....	Mr. David Moore
Manager of Financial Operations.....	Mr. John Kruhmin
Registrar, Director of Admissions.....	Mr. Benjamin Puckett
Dean of Women.....	Mrs. Karen Johnson
Academic Director of EBI.....	Rev. Norman Spotts
Administrative Director of EBI.....	Mr. Frank Snyder
Admissions Counselor.....	Mr. Randy Starner
Director of Christian Service, Alumni Co-ordinator.....	Mr. Brian Johnson
President's Secretary.....	Mrs. Lynn Smith
Admissions Office Secretary.....	Mrs. Yvonne Willer
Bookkeeper.....	Mrs. Julie Keating
Assistant Bookkeeper.....	Mrs. Linda Pasch
Bookstore Supervisor.....	Miss Ruth Russell
Superintendent, Buildings and Grounds.....	Mr. Floyd Eyler
Librarian.....	Mrs. Elizabeth Werner
Assistant Librarians.....	Miss Susan Dillinger
	Mr. Hal Haller
	Mrs. Adella Hitchins
Infirmary (nurse on call).....	Dr. Jean Macfarlane
Security.....	Mr. Michael Werner
Resident Hall Supervisors.....	Mr. & Mrs. Gaylon Johnson
	Mr. & Mrs. Michael Werner
Food Service Director.....	Mrs. Bea Sawyer
Food Service Assistants.....	Mrs. Marion Morton
	Mrs. Mildred Bessey
	Mrs. Ruth Gibbs
	Mrs. Beverly Mosher
	Mrs. Barbara Scarey

FACULTY

Mary Jan Anderson, Associate Professor, English & Literature

Degrees Earned:

B.A. Campbell College, 1964, English/Modern Language
M.A. Vanderbilt University, 1965, English
A.B.D. Vanderbilt University, 1970, Comparative Literature

Teaching Experience:

Murray (KY) State College, 1965-66
Methodist College, Fayetteville, N.C., 1966-67
Memphis (TN) State University, 1970-76
Pensacola (FL) Christian College, 1983-85
Clearwater Christian College, 1985-

James Bauman, Assistant to President; Professor, Business

Degrees Earned:

B.A. Bryan College, 1969, History
J.D. Stetson University, College of Law, 1972, Law
Th.M. Grace Theological Seminary, 1982, Theology

Teaching Experience:

Indiana Vocational Institute, Warsaw, IN 1979-81
Clearwater Christian College, 1977, 1982-

Clem Boatright Professor, Music

Degrees Earned:

B.M. Jacksonville College of Music, 1949, Music
M.M. Louisiana State University, 1950, Music

Teaching Experience:

University of Florida, Gainesville, FL 1953-68
St. Petersburg (FL) Junior College, 1968-78
Clearwater Christian College, 1968-

Barbara Burke, Assistant Professor, Physical Education

Degrees Earned:

B.S. Western Michigan University, 1980, Physical Education & Coaching
M.Ed. University of Tennessee at Chattanooga, 1984,
Administration of Physical Education

Teaching Experience:

Tennessee Temple University, Chattanooga, TN 1980-84
Clearwater Christian College, 1984-

Robert Carver, Associate Professor, Greek and Bible
Degrees Earned:

B.A. Shelton College, 1965, Hebrew and Hellenistics
M.Div. Faith Theological Seminary, 1968, Theology

Teaching Experience:

Shelton College, Cape May, NJ 1968-77
Clearwater Christian College, 1977-

***Deborah Hamby**, Assistant Professor, Applied Music

Degrees Earned:

B.S. Campbellsville (KY) College, 1973, Music
M.C.M. Southern Baptist Theological Seminary, 1976, Church Music

Teaching Experience:

Nichols Elementary School, Shepherdsville, KY 1976-77
Clear Creek Baptist School, Pineville, KY 1978-80
Clearwater Christian College, 1984-

Walter Hatten, Chairman, Division of Education & Psychology;
Professor, Education

Degrees Earned:

B.S. Bob Jones University, 1964, Secondary Education
M.A. University of Rhode Island, 1972, Adult Education
Sixth Year Certificate, University of Connecticut, 1976, School Administration
Ph.D. University of Connecticut, 1983, Curriculum and Instruction; Elementary Education

Teaching Experience:

Catlettsburg (KY) High School, 1964-66
Raceland (KY) High School, 1966-67
Sayles Elementary School, Baltic, CT 1971-76
Emmanuel Christian Academy, Newington, CT 1976-77
Grace Heritage Christian School, New London, CT 1978-84
Clearwater Christian College, 1984-

Brian Johnson, Director of Christian Service; Assistant Professor,
Education and History

Degrees Earned:

B.A. Clearwater Christian College, 1974, Bible
B.A. Clearwater Christian College, 1976, History
M.A.T. Jacksonville University, 1980, Social Studies Education

Teaching Experience:

Pensacola, (FL) Christian School, 1974-75
Victory Christian Academy, Jacksonville, FL 1976-81
Clearwater Christian College, 1981-

Elizabeth Knepper, Assistant Professor, Education

Degrees Earned:

B.A. Clearwater Christian College, 1977, Bible
M.A. Georgia College, 1982, Early Childhood Education

Teaching Experience:

Westgate Christian School, Tampa, FL 1977-79
Trinity Christian School, Dublin, GA 1979-83
Clearwater Christian College, 1983-

***Carol Ladner**, Assistant Professor, Music

Degrees Earned:

B.M. Baylor University, 1960, Sacred Music
M.M. University of South Florida, 1976, Voice
Ph.D. in progress, Florida State University

Teaching Experience:

Marlin (TX) Independent School District, 1960-61
Mobile (AL) Public School Board, 1961-62
Hillsborough County Board of Public Inst. Tampa, FL 1970-79
Clearwater Christian College, 1979-

Brenda Lewter, Instructor, Secretarial Science

Degrees Earned:

B.S. Austin Peay University, 1976, Business Education and Sociology

Teaching Experience:

Tampa (FL) College, 1979-83
Clearwater Christian College, 1983-

Jean Macfarlane, Chairman, Division of Literature & Fine Arts;
Professor, English and Literature

Degrees Earned:

B.A. University of South Florida, 1969, English Education
M.A. University of South Florida, 1970, Humanities Education
Ph.D. University of Florida, 1980, English

Teaching Experience:

Clearwater Christian College, 1970-

David Moore, Academic Dean; Associate Professor, History

Degrees Earned:

B.A. Clearwater Christian College, 1977, Secondary Education
M.A. University of South Florida, 1980, History
Ph.D. in progress, University of South Florida

Teaching Experience:

Temple Heights Christian School, Temple Terrace, FL 1977-78
Keswick Christian School, St. Petersburg, FL 1978-81
Clearwater Christian College, 1981-

James Morris, Professor, Psychology

Degrees Earned:

B.S. University of Georgia, 1948, Psychology
M.S. Florida State University, 1949, Psychology
Ph.D. Florida State University, 1959, Psychology

Work Experience:

Chief Psychologist, Milledgeville (GA) State Hospital, 1954-59
Director, Anclote Manor Hospital, Psychology Department Tarpon Springs, FL 1960-83

Teaching Experience:

Florida State University, Tallahassee, FL 1951-53
Clearwater Christian College, 1984-

Edward Oliver, D.D., Associate Professor, Bible

Degrees Earned:

B.A. Shelton College, 1958, Social Studies
M. Div. Faith Theological Seminary, 1962, Theology

Teaching Experience:

Shelton College, Cape May, NJ 1963-77
Clearwater Christian College, 1977-

William Pardee, Professor, Bible

Degrees Earned:

A.B. Calvin College, 1935, Education
B.D. Northern Baptist Theological Seminary, 1938
Th.M. Calvin Theological Seminary, 1942, Theology
Th.D. Northern Theological Seminary, 1948, Theology

Teaching Experience:

Grand Rapids (MI) Baptist College and Seminary, 1947-70
Central Baptist Seminary, Toronto, Ontario 1974-77
Clearwater Christian College, 1978-

***Marion Pinckney**, Assistant Professor, Applied Music

Degrees Earned:

B.A. Hunter College, 1949, Music

Teaching Experience:

Graham Bible College, Bristol, TN 1976-79
Clearwater Christian College, 1983-

Benjamin Puckett, Registrar & Director of Admissions; Assistant Professor, Education

Degrees Earned:

B.A. Clearwater Christian College, 1976, Secondary Education
M.A. University of Georgia, 1983, Administration

Teaching Experience:

Victory Christian Academy, Jacksonville, FL 1976-77
Stone Mountain (GA) Christian School, 1977-83
Clearwater Christian College, 1983-

Lawrence Satmary, Assistant Professor, Special Education

Degrees Earned:

B.A. Ball State University, 1972, Mental Retardation
M.A. Ball State University, 1973, Special Education
M.A. Hyles-Anderson College, 1983, Christian School Administration
Ph.D. in progress, University of South Florida

Teaching Experience:

United Cerebral Palsy Developmental Center, Muncie, IN 1972-73
Exceptional Learning Center, Fort Myers, FL 1973-75
Clearwater Christian College, 1983-

***LeRoy Scott**, Professor, Life Sciences

Degrees Earned:

B.S. Southern Illinois University, 1954, Zoology and Chemistry
M.S. Southern Illinois University, 1956, Biological Sciences
Certificate of Advanced Studies, Northern Illinois University, 1965, Biology Education
Ed.D. Nova University, 1975, Community College Curriculum and Instruction

Teaching Experience:

Florida State University, Tallahassee, FL 1965-66
St. Petersburg (FL) Junior College, 1966-
Clearwater Christian College, 1970-72, 1984-

***Frank Snyder**, Assistant Professor, History and Economics

Degrees Earned:

B.S. Clearwater Christian College, 1983, Business Administration
M.A. in progress, University of South Florida

Work Experience:

Manager, Executive and Consultant to the Motor Transportation Industry, 1947-81

Teaching Experience:

Clearwater Christian College, 1981-

Norman Spotts, Dean of Students Emeritus; Associate Professor, Bible and Theology

Degrees Earned:

B.A. Bob Jones University, 1954, Bible
M.Div. Faith Theological Seminary, 1957, Theology

Teaching Experience:

Clearwater Christian College, 1970-

Arthur Steele, D.D., President; Professor, Bible
Degrees Earned:
B.S. Carnegie Mellon University, 1942, Chemical Engineering
M.Div. Faith Theological Seminary, 1959, Theology
Teaching Experience:
Shelton College, Cape May, NJ 1962-65
Clearwater Christian College, 1966-

David Steele, Chairman, Division of Business, Mathematics, &
Computer Programming; Professor, Mathematics and Computer
Programming
Degrees Earned:
B.A. Clearwater Christian College, 1971, Mathematics
M.S. University of South Florida, 1974, Mathematics
Ph.D. University of South Florida, 1983, Mathematics
Teaching Experience:
University of South Florida, Tampa, FL 1977-82, 1984
Clearwater Christian College, 1971-

Jonathan Steele, Assistant Professor, Music
Degrees Earned:
B.A. Clearwater Christian College, 1974, Biblical Literature
M.M. University of South Florida, 1980, Music Theory
Ph.D. in progress, University of Florida
Teaching Experience:
Grace College of the Bible, Omaha, NB 1981-82
Fort Lauderdale (FL) Christian School, 1983-85
Clearwater Christian College, 1976-81, 1985-

Peter Traversa, Assistant Professor, Business
Degrees Earned:
B.S. Troy State University, 1974, Business Administration
B.S. Clearwater Christian College, 1981, Humanities
M.B.A. University of South Florida, 1984, Business Administration
Teaching Experience:
Clearwater Christian College, 1980-

Elizabeth Werner, Librarian; Associate Professor, Spanish
Degrees Earned:
B.A. Mills College, 1966, Spanish
M.A. Indiana University, 1968, Spanish
M.L.S. University of Maryland, 1973, Library Science
Teaching Experience:
Western Maryland College, Westminster, MD 1968-72
Clearwater Christian College, 1975-

Delmar Wubbena, Dean of Students; Athletic Director; Associate
Professor, Physical Education
Degrees Earned:
B.S. Bob Jones University, 1965, Physical Education
M.A. Central Michigan University, 1973, Administration
Teaching Experience:
Hillman (MI) High School, 1965-67
Mio (MI) High School, 1967-74
Pensacola (FL) Christian College, 1974-78
Tri-Cities Christian School, Blountville, TN 1978-82
Clearwater Christian College, 1982-

*Part-time

Please follow instructions carefully and fill out the application form completely. It is important that the application and all supporting transcripts and reference forms be returned as soon as possible so that action may be taken by the Admissions Committee.

1. **APPLICATION:** Fill out all blanks as completely as possible. If an item is unrelated to your situation, please put N.A. in the blank. Always use your exact legal name. Remember to attach a small recent photograph of yourself. Be sure to sign and date the form.
2. **PERSONAL TESTIMONY:** A personal testimony in written form is required of every applicant to C.C.C. (SEE REVERSE SIDE OF THIS FORM).
3. **APPLICATION FEE:** A non-refundable fee of \$15.00 must accompany this application. Make check or money order payable to Clearwater Christian College. Do not send currency. A receipt will be sent to you.
4. **PASTOR'S ACADEMIC & GENERAL REFERENCES:** Please provide the names and addresses of your pastor or elder, one academic reference and one general reference (no relatives). Our office will contact them shortly. (SEE APPLICATION FORM).
5. **TRANSCRIPTS:** Request the principal or guidance counselor of your high school to send a complete, official transcript of your work in grades 9-12 directly from the high school to our office. If you are a transfer student, request a complete, official transcript of your work be mailed to our office directly from the registrar of every institution of higher education which you have attended. Personal transcripts are unacceptable and should not be sent.
6. **ENTRANCE TEST INFORMATION:** Scores received on the ACT or SAT should be submitted to the Office of Admissions as a part of the high school transcript ordered directly from the headquarters of the testing agency. If you have taken any additional scholastic aptitude test, achievement test or similar standardized test, have the results sent directly to the Office of Admissions. (This applies to all applicants - both freshmen and transfers.)
7. **MEDICAL REPORT:** Using the attached form, provide details about your medical history. Have your physician fill out the bottom portion of the form and return it to our office as soon as possible.

The application and all supporting transcripts and reference forms must be in this office before final action can be taken by the Admissions Committee. A delay in the receipt of one of these documents will result in a delay in the action of the Committee.

Submit completed application to:

Office of Admissions
Clearwater Christian College
3400 Gulf-to-Bay Blvd.
Clearwater, FL 33519

STANDARD OF CONDUCT

One of the objectives of Clearwater Christian College as stated in the catalog is to assist its students to mature in their Christian lives. With the conviction that the College is responsible for the spiritual development of its students, an attempt is made to create an atmosphere which will produce the desired effect. The daily chapel hour, Christian faculty and staff, Christian service activity, faithful worship in church on Sunday, and a Biblical standard of conduct are all part of the total program.

To maintain this atmosphere and to present to the world a distinct Christian testimony, the College believes that it is necessary for all students to agree to

1. accept the responsibility of mature citizenship which involves consideration of and respect for the personal happiness and property of other members of the local academic community, and
2. abstain from worldly practices such as the use of alcohol and tobacco, participation in gambling and dances, and attendance at commercial theatres.

It is recognized that some students may not have personal convictions in regard to one or more of these activities. Agreeing to abide by the spirit and letter of the policy obligates the student, however, to honorable adherence until he withdraws from the College.

I hereby certify that I support the College in reaching its desired objectives and will willingly abide by the above standards and others as specified in the Catalog and Student Handbook as long as I am a student at Clearwater Christian College

SIGNATURE

DATE _____

APPLICANT'S PERSONAL TESTIMONY

On a separate sheet of paper, please combine, in a concise manner, and in your own handwriting, a word of personal testimony regarding your Christian faith, including your beliefs concerning the Bible and the Deity of Christ, with a statement of your standards of Christian living and your reasons for seeking a Christian education.

I certify that the information given in this application is accurate and complete to the best of my knowledge and understand that falsification or omission of information will be sufficient grounds for refusal of admission or for dismissal.

SIGNATURE

DATE _____

I willingly waive my right of access to see the personal references received by Clearwater Christian College knowing that this waiver is NOT required as a condition for admission.

SIGNATURE

DATE _____

CHECK EACH ITEM TO BE SURE IT IS INCLUDED WITH THIS APPLICATION PACKAGE:

- ☐ Completed Application Form
- ☐ Recent Photograph of Yourself
- ☐ \$15.00 Non-Refundable Application Fee
- ☐ Applicant's Personal Testimony

OFFICE OF ADMISSIONS
CLEARWATER CHRISTIAN COLLEGE
3400 GULF-TO-BAY BLVD.
CLEARWATER, FL 33519

APPLICATION FOR ADMISSION

PERSONAL

[illegible]

[illegible]

All students are required to have a medical examination prior to Registration. Information reported on this form will be treated confidentially. Have your physician fill out the appropriate section and submit to the Admissions Office.											
LAST NAME		FIRST		MIDDLE		AGE		BIRTHDATE		SEX	
PERMANENT STREET ADDRESS						CITY		STATE		ZIP	
										HOME AREA CODE AND PHONE	
HAVE YOUR EVER BEEN HOSPITALIZED? <input type="checkbox"/> YES <input type="checkbox"/> NO						IF "YES" WHEN?		WHERE?		WHY?	
HAVE YOUR EVER RECEIVED PSYCHIATRIC TREATMENT? <input type="checkbox"/> YES <input type="checkbox"/> NO						IF "YES" WHEN?		WHERE?		WHY?	
DISEASE HISTORY											
CURED OR YES NO CORRECTED				CURED OR YES NO CORRECTED				CURED OR YES NO CORRECTED			
<input type="checkbox"/> <input type="checkbox"/> <input type="checkbox"/> Scarlet Fever <input type="checkbox"/> <input type="checkbox"/> <input type="checkbox"/> Diphtheria <input type="checkbox"/> <input type="checkbox"/> <input type="checkbox"/> Rheumatic Fever <input type="checkbox"/> <input type="checkbox"/> <input type="checkbox"/> Measles <input type="checkbox"/> <input type="checkbox"/> <input type="checkbox"/> Mumps <input type="checkbox"/> <input type="checkbox"/> <input type="checkbox"/> Pneumonia <input type="checkbox"/> <input type="checkbox"/> <input type="checkbox"/> Polio <input type="checkbox"/> <input type="checkbox"/> <input type="checkbox"/> Tuberculosis <input type="checkbox"/> <input type="checkbox"/> <input type="checkbox"/> Whooping Cough <input type="checkbox"/> <input type="checkbox"/> <input type="checkbox"/> Malaria <input type="checkbox"/> <input type="checkbox"/> <input type="checkbox"/> Typhoid Fever				<input type="checkbox"/> <input type="checkbox"/> <input type="checkbox"/> Meningitis <input type="checkbox"/> <input type="checkbox"/> <input type="checkbox"/> Sinus <input type="checkbox"/> <input type="checkbox"/> <input type="checkbox"/> Epilepsy <input type="checkbox"/> <input type="checkbox"/> <input type="checkbox"/> Stomach or Intestinal Disease <input type="checkbox"/> <input type="checkbox"/> <input type="checkbox"/> Liver Disease <input type="checkbox"/> <input type="checkbox"/> <input type="checkbox"/> Kidney Disease <input type="checkbox"/> <input type="checkbox"/> <input type="checkbox"/> Sugar or Albumin in Urine <input type="checkbox"/> <input type="checkbox"/> <input type="checkbox"/> Hernia <input type="checkbox"/> <input type="checkbox"/> <input type="checkbox"/> Nervous Disorder <input type="checkbox"/> <input type="checkbox"/> <input type="checkbox"/> Skin Disease <input type="checkbox"/> <input type="checkbox"/> <input type="checkbox"/> Ear, Nose or Throat Trouble				<input type="checkbox"/> <input type="checkbox"/> <input type="checkbox"/> Joint Trouble <input type="checkbox"/> <input type="checkbox"/> <input type="checkbox"/> Allergies <input type="checkbox"/> <input type="checkbox"/> <input type="checkbox"/> Reaction to Drugs <input type="checkbox"/> <input type="checkbox"/> <input type="checkbox"/> Appendicitis <input type="checkbox"/> <input type="checkbox"/> <input type="checkbox"/> Hemorrhoids <input type="checkbox"/> <input type="checkbox"/> <input type="checkbox"/> V.D., Syphilis, Gonorrhea <input type="checkbox"/> <input type="checkbox"/> <input type="checkbox"/> Herpes <input type="checkbox"/> <input type="checkbox"/> <input type="checkbox"/> Foot Trouble <input type="checkbox"/> <input type="checkbox"/> <input type="checkbox"/> Trick Knee <input type="checkbox"/> <input type="checkbox"/> <input type="checkbox"/> Arthritis <input type="checkbox"/> <input type="checkbox"/> <input type="checkbox"/> Asthma:			
				date of last attack							
BLOOD TYPE (if available)		RH FACTOR (if available)		HEIGHT		WEIGHT		PULSE		BLOOD PRESSURE	
IMMUNIZATION DATES		SMALL POX		DIPHTHERIA		TETANUS		TYPHOID		POLIO	
NORMAL		ABNORMAL		EXPLAIN IF ABNORMAL				NORMAL		ABNORMAL	
<input type="checkbox"/> <input type="checkbox"/> <input type="checkbox"/> Ears <input type="checkbox"/> <input type="checkbox"/> <input type="checkbox"/> Teeth and Gums (general) <input type="checkbox"/> <input type="checkbox"/> <input type="checkbox"/> Nose, Throat and Sinuses <input type="checkbox"/> <input type="checkbox"/> <input type="checkbox"/> Lungs <input type="checkbox"/> <input type="checkbox"/> <input type="checkbox"/> Heart <input type="checkbox"/> <input type="checkbox"/> <input type="checkbox"/> Abdomen <input type="checkbox"/> <input type="checkbox"/> <input type="checkbox"/> Back								<input type="checkbox"/> <input type="checkbox"/> <input type="checkbox"/> Eyes <input type="checkbox"/> <input type="checkbox"/> <input type="checkbox"/> Feet and Arches <input type="checkbox"/> <input type="checkbox"/> <input type="checkbox"/> Reflexes <input type="checkbox"/> <input type="checkbox"/> <input type="checkbox"/> Skin <input type="checkbox"/> <input type="checkbox"/> <input type="checkbox"/> Posture <input type="checkbox"/> <input type="checkbox"/> <input type="checkbox"/> Other			
				Evidence of Communicable Disease							
PSYCHIATRIC HISTORY (if any)											
CURRENT PRESCRIPTION MEDICATION											
REASON FOR TAKING											
PHYSICAL OR EMOTIONAL LIMITATIONS											
HAS THE APPLICANT SHOWN A HISTORY OF THE USE OF											
NARCOTICS OR DANGEROUS DRUGS				ALCOHOL				TOBACCO			
PHYSICIAN'S NAME (Please Print)											
PHYSICIAN'S ADDRESS											
CITY											
STATE											
ZIP											

**TRANSCRIPT
REQUEST
FORM**

To the Registrar or Principal of _____
Name of College or School

I hereby request a copy of my academic records from your institution to be sent to:

Director of Admissions

Clearwater Christian College

3400 Gulf-to-Bay Boulevard

Clearwater, FL 33519

NAME (please print) _____ Date _____

Social Security Number _____

Year(s) Attended _____

Other name used (if applicable) _____

Signature _____ Date _____

**TRANSCRIPT
REQUEST
FORM**

To the Registrar or Principal of _____
Name of College or School

I hereby request a copy of my academic records from your institution to be sent to:

Director of Admissions

Clearwater Christian College

3400 Gulf-to-Bay Boulevard

Clearwater, FL 33519

NAME (please print) _____ Date _____

Social Security Number _____

Year(s) Attended _____

Other name used (if applicable) _____

Signature _____ Date _____

INDEX

Academic Advising	27
Academic Load	27
Academic Progress and Probation	46
Administration	110
Admissions	24
Application for Admission	121
Board of Directors	110
Calendars of Events	6, 7
Campus Residence	18
Chapel	17
Christian Service	17
Class Attendance	29
Correspondence Credit Policy	30
Course Descriptions	75-103
Degrees Offered	40
Distinctives	14
Divisions, Academic	48
Doctrinal Basis	12
Early Enrollment	28
Evening Bible Institute	105-108
Faculty	111-117
Financial Information	
Expenses	32, 33
Financial Aid	35-38
Foreign Students	26
General Education Requirements	42, 43
Health Service	18
History of College	10, 11
Library	20
Location	2
Majors	
Bible	50
Biblical Literature	51
Business Administration	54
Computer Programming	56
Elementary Education	61
English	72
English Bible	52
Music	74
Music Education	67
Physical Education	69
Preschool Education	59
Psychology	70
Secondary Education	62-66
Secretarial Science	57
Matriculation	27
Purpose and Objectives of the College	12, 13
Re-admission to the College	28
Refunds	34
Registration	27
Residence Halls	19
Scholastic Honors	45
Staff	110
Standard of Conduct	16
Student Classification	46
Table of Contents	5
Testing Program	29
Transfer Students	25
Withdrawal from a Course	28
Withdrawal from College	28

CLEARWATER CHRISTIAN COLLEGE

3 2879 00115 3344

Clearwater Christian College
3400 Gulf-to-Bay Boulevard
Clearwater, Florida 33519

